



APC

Smart-UPS Lithium-ion 120V

Lower operating costs. Perfect for distributed IT.

Trusted protection with 3x the battery life from 500VA to 3000VA

apc.com/lithium-ion

Life Is On | **Schneider**
Electric

The world's most popular network and server UPS now with Lithium-ion batteries

Smart-UPS Lithium-ion integrated into 6U low profile wall mount Micro Data Center with APC NetBotz Security & Environmental Monitoring.

Lithium-ion batteries last 3x longer than VRLA

Smart-UPS Lithium-ion batteries last 3x longer than VRLA batteries. You don't have to replace the battery for 8-10 years.**

Short depth UPS*

The Smart-UPS Lithium-ion short depth UPS fit shallow depth and regular racks, giving you extra space for cable management.

Built-in remote management

Built-in secure cloud monitoring with the EcoStruxure Ready Smart-UPS Ethernet Port.

Broad range of power options

Smart-UPS Lithium-ion is available from 500VA to 3000VA.

Ideal for various applications

Small edge environment, retail back office and store network. Healthcare, K-12, Higher Ed, larger retail locations, banks and grocery stores. Supports back office, network infrastructure and IDF/MDF closets



*Short depth available in 500VA/750VA/1000VA/1500VA models

**Under similar operating conditions

Save up to 50% on TCO with Smart-UPS Lithium-ion

APC Smart-UPS with Lithium-ion technology enables IT professionals to lower Total Cost of Ownership (TCO) by minimizing UPS maintenance and offering remote UPS management across distributed environments.

APC™ award-winning Smart-UPS™ is the most popular UPS in the world for servers, storage and network power protection. Now available with Lithium-ion batteries which provide 3X the battery life (8-10 years) compared to valve-regulated lead-acid (VRLA) batteries (3-5 years). Smart-UPS Lithium-ion features short depth models from 500VA-1500VA to help save space for cable management or for rack mounting.

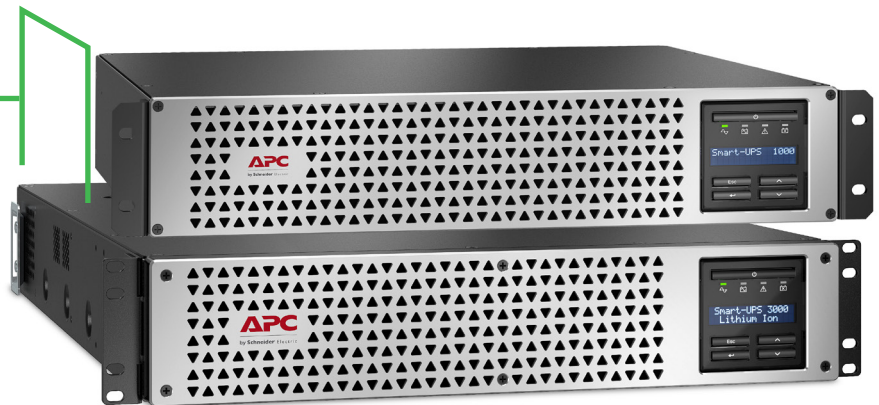
All Smart-UPS are Ecostruxure™ Ready with the SmartConnect Ethernet Port, the only build-in cloud monitoring option on the market Smart-UPS provides availability and manageability via your network allowing you to focus on business growth instead of business downtime.



Smart-UPS Lithium-ion features

Intelligent and efficient network power protection. Ideal for servers, routers, switches, hubs and other network devices.

Save up to 15" of space on the short depth models*



Short depth UPS*

Suitable for short depth and standard racks. Short Depth UPS provides extra space for cable management.

Built-in remote management

Built-in secure cloud monitoring with the SmartConnect Ethernet Port. Pre-installed Network Management options for remote management and control.

Lithium-ion batteries

Up to 65% lighter and 3X longer life than VRLA batteries.

Five-year warranty

Peace of mind with a five-year warranty on both electronics and internal batteries.

Network-grade power

Provides stable and conditioned power by filtering noise, automatic voltage regulation (AVR) and surge protection.

Intelligent battery management system

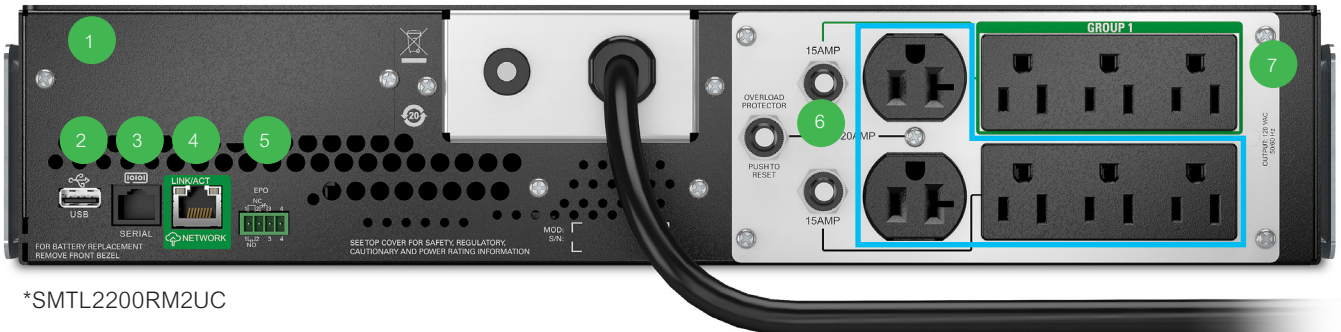
Monitoring at the cell level to manage voltage helps Lithium-ion batteries provide a higher level of performance.

Built-in energy meter

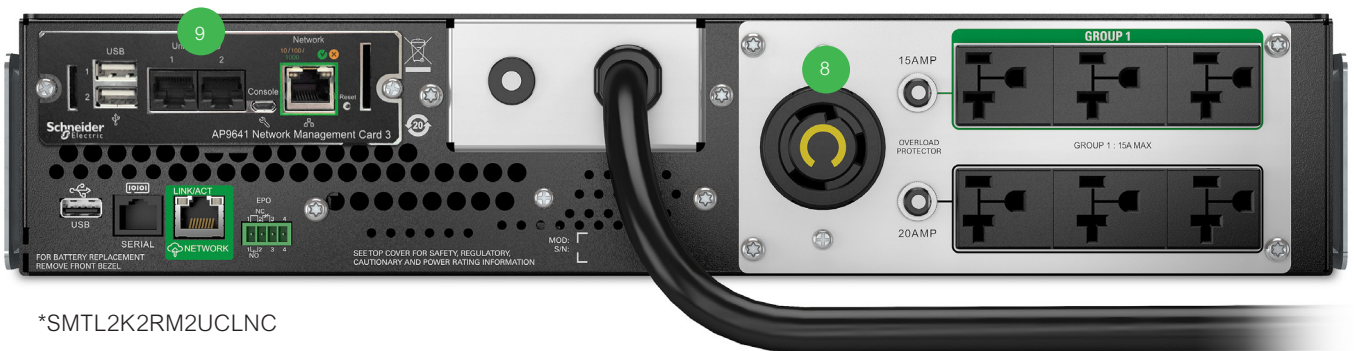
Measures energy use and displays UPS efficiency in operating modes for easy tracking

*Short Depth available in 500VA/750VA/1000VA/1500VA models

Smart-UPS Lithium-ion features



*SMTL2200RM2UC



*SMTL2K2RM2UCLNC

1. SmartSlot for network accessory card
2. USB port
3. Serial port
4. SmartConnect Ethernet Port
5. Emergency Power Off

6. Main outlet group
7. Switched outlet group
8. Locking Outlet
9. Pre-installed Network Management Card

Switched outlet group

Control a group of output load receptacles independent from the main UPS:

- Sequenced turn ON/OFF
- Shedding of noncritical loads based on parameters (battery time, runtime remaining and overload)
- Scheduled time OFF to conserve energy
- Rebooting hung device without cycling the entire UPS

Communication ports

Options of Serial, USB, SmartConnect Ethernet Port and SmartSlot™ for network accessory cards.

Communication protocols

Choose from Modbus serial, USB PowerSummary, HTTP, SNMP and Telnet.

Flash upgradeable firmware

Allows for field updates of firmware via communication ports or Network Management Card (NMC).

Input circuit breaker

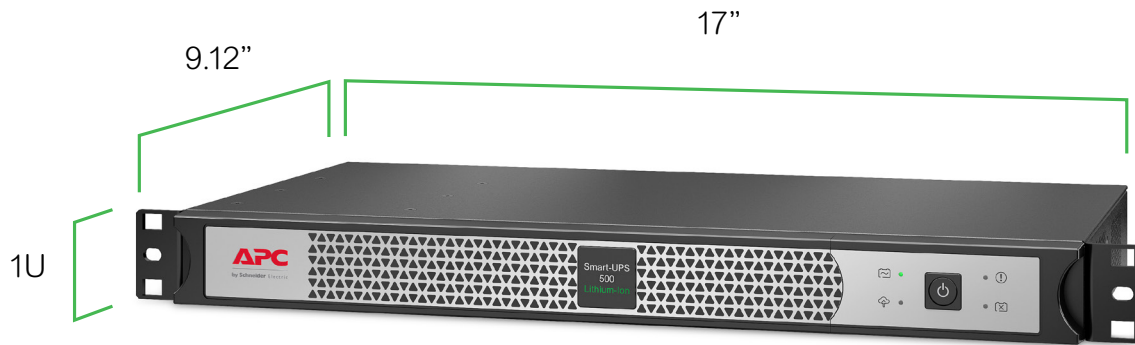
Re-settable protection.

High-efficiency green mode

Achieves higher efficiency which minimizes utility and cooling costs without compromising UPS performance or reliability

Smart-UPS SC Lithium-ion features

Power protection for entry-level servers, voice and data networks



Short depth UPS

At 9.14 in, the Smart-UPS Lithium-ion SCL is the smallest 1U 500VA UPS available today.

Lithium-ion batteries

Up to 65% lighter and 3X longer life than VRLA batteries.

Communication ports

Easy connection and initialization by Serial ports.

Use USB with Serial to USB adapter.

*SmartConnect Ethernet Port for built-in easy-to-use remote monitoring feature that provides automatic notifications, firmware updates and advanced support services. Ideal for small business monitoring.

Rich communication ports embedded**

Allows users to remote monitor and control the UPS remotely via secure network browsers or external command line interfaces. Ideal for fleet management.

Rugged sheet metal

Construction rigidly holds and helps protect essential electrical components.

Rack/tower convertible

Provides flexibility to change from a rack to tower installation using optional accessory.

Audible alarms

Provides alarm notification of changing utility power and UPS power conditions.

*APC SmartConnect feature available on the "C" suffix model

**Embedded Network Management Card option available on the "NC" suffix model

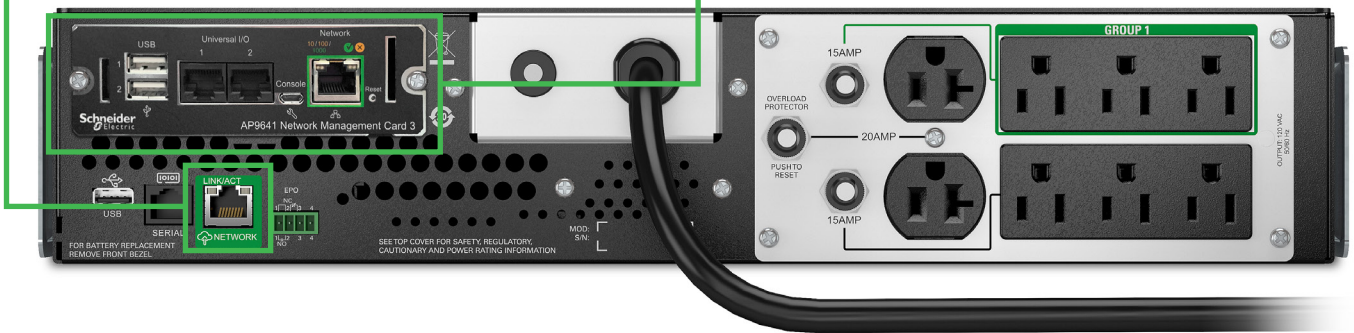
Smart-UPS management solutions

EcoStruxure Ready Built-in Cloud monitoring

Connect to either the Smart-UPS Portal or to EcoStruxure IT via the SmartConnect Ethernet Port

UPS Network Management Cards Connect directly to your network

A UPS Network Management Card allows for secure remote monitoring and control of an individual UPS



PowerChute Serial Shutdown

UPS managability at your fingertips

UPS management, graceful shutdown, and energy management software for servers using dedicated serial or USB connections.

Energy usage, cost and CO2 reporting provide a greater understanding of the energy consumed by IT equipment, enabling improved energy efficiency. Learn more and download from <https://www.apc.com/pcss>.

PowerChute Network Shutdown

Industry-leading power protection for your hyper-converged and virtual infrastructure

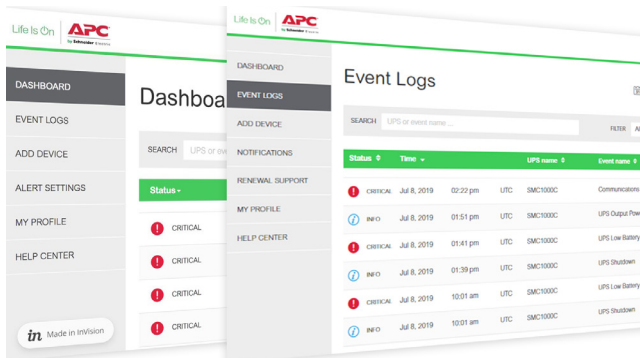
In conjunction with the APC UPS Network Management Card, PowerChute Network Shutdown helps protect your physical and virtual IT environment from threats to IT availability.

Network-based, graceful, unattended shutdown and restart of your physical servers and virtual machines help protect data integrity and reduces system downtime during prolonged power disturbances. Learn more and download from <https://www.apc.com/pcns>.

*Embedded Network Management Card option available on the "NC" suffix model

EcoStruxure Ready Smart-UPS

Secure monitoring and UPS fleet management.



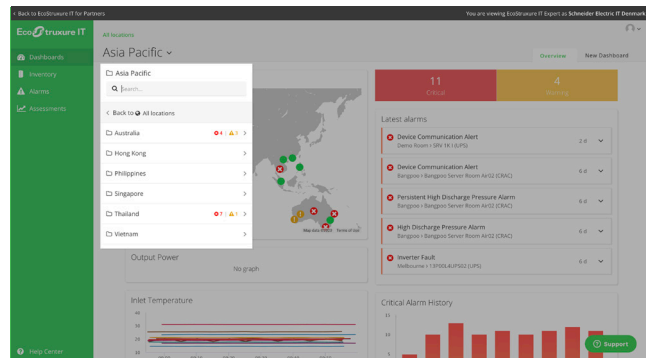
Built-in EcoStruxure Ready Smart-UPS Portal

Secure web portal for basic monitoring

Provides visibility directly to the customer to help make proactive decisions and maximize uptime.

Ideal for small and medium businesses who prefer to self-manage.

*Feature availability varies by terms of use.

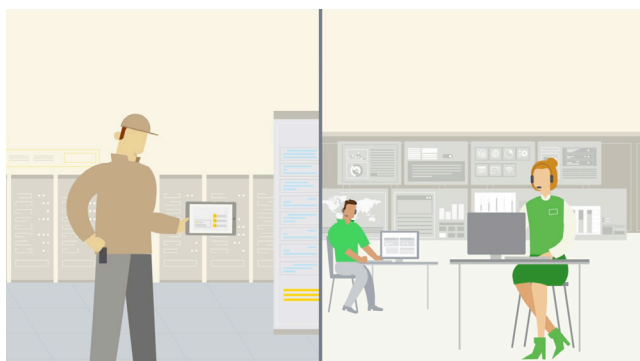


EcoStruxure IT Expert

The do-it-yourself advanced monitoring

We empower you to monitor and service customers on your own or provide EcoStruxure IT Expert to your customers who prefer a self-managed option.

Ideal for distributed IT sites and businesses with mixed IT environments.



EcoStruxure IT Asset Advisor

We advise, you maintain

We provide monitoring services, and you handle the maintenance. This option appeals most to partners who want to use their own on-site service.



EcoStruxure IT Monitoring and Dispatch

We monitor and service

We provide monitoring and maintenance services on your behalf. Ideal for IT solution providers who want to add service without additional cost to your business model.

Smart-UPS accessories

UPS management accessories

- AP9640: UPS network management card
- AP9641: UPS network management card with environmental monitoring
- AP9643: UPS network management card with environmental monitoring and Modbus
- AP9834: APC USB Wi-Fi Device for wireless communication [compatible with AP9641 & AP9643 pre-installed or embedded]



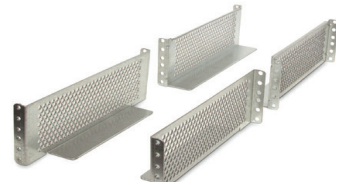
AP9641



AP9834

Rail Kit options

- SU032A: APC Smart-UPS four-post rackmount rail kit
- AP9625: APC Smart-UPS SMTL 2200/3000VA two-post rail kit



AP9625

Service bypass panels

- SBP1500RM: APC service bypass PDU, 120V; 15 amp with (8) NEMA 5-15R
- SBP2200RM: APC service bypass PDU, 120V; 20 amp with (6) NEMA 5-15R and (2) 5-20R
- SBP3000RM2U: APC service bypass PDU, 100-120V; 30 amp, BBM, L5-30P input, with (6) 5-15R and (2) 5-20R
- SBP3000RM: APC service bypass PDU, 120V; 30 amp with (4) NEMA 5-20R and (1) L5-30R



SU032A

Power distribution units

- AP9562: APC Rack PDU, Basic, 1U, 15A, 120V, (10) NEMA 5-15R
- AP9567: APC Rack PDU, Basic, Zero U, 15A, 120V, (14) NEMA 5-15R
- AP9563: APC Rack PDU, Basic, 1U, 20A, 120V, (10) NEMA 5-20R and (1) 5-20P
- AP9564: APC Rack PDU, Basic, 1U, 20A, 120V, (10) NEMA 5-20R and (1) L5-20P
- AP9560: APC Rack PDU, Basic, 1U, 30A, 120V, (10) NEMA 5-20R and (1) L5-30



AP9562

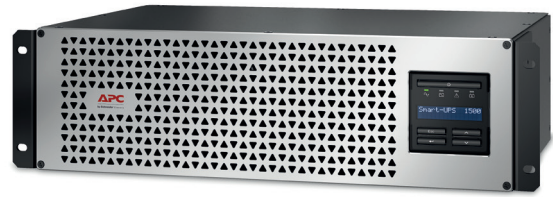
Feet for UPS tower conversion

- SMTL2USF: APC SmartUPS SMTL 1000/750VA Tower Mounting Stabilizing Kit
- SMTL3USF: APC SmartUPS SMTL 1500VA Tower Mounting Stabilizing Kit



SMTL2USF

Product family



SKU technical specifications

	SCL500RM1UC SCL500RM1UNC*	SMTL750RM2UC SMTL750RM2UCNC*	SMTL1000RM2UC SMTL1000RM2UCNC*	SMTL1500RM3UC SMTL1500RM3UCNC*
Topology	Line Interactive			
Output				
Output power capacity	400 Watts / 500 VA	600 Watts / 750 VA	800 Watts / 1000 VA	1350 Watts / 1500 VA
Nominal output voltage	120V			
Output voltage distortion	Less than 5% at full load			
Output frequency (sync to mains)	50/60 Hz +/- 3 Hz			
Waveform type	Pure sine wave			
Output connections	(4) NEMA 5-15R	(6) NEMA 5-15R		
Switched outlet group	Yes/2	Yes/1		
Efficiency at full load	>98%			
Input				
Nominal input voltage	120V			
Input frequency	50/60 Hz +/- 3 Hz (auto sensing)			
Input connections	NEMA 5-15P			
Input voltage range for main operations	92 – 139Vac	82 – 144Vac		
Batteries and runtime				
Battery type	Lithium-ion			
Runtime (Full load/ Half load)	3 / 6 min	5.7 / 13 min	8 / 16.7 min	5 / 12.6 min
Communications and management				
Interface port(s)	USB Type A, APC SmartConnect (RJ45)	Serial (RJ45), SmartSlot, USB, APC SmartConnect (RJ45)		
SmartSlot™ interface availability	0, *embedded Network Management Card in "NC" suffix model	Yes. (AP9641 is pre-installed in -NC* models)		
Control panel	LED display	Multi-function LCD status and control console		
Physical				
Net HxWxD	1.75" x 17" x 9.14"	3.39" x 17.25" x 12.5"	3.39" x 17.25" x 12.5"	5.14" x 17.25" x 12"
Rack height	1U	2U	2U	3U
Net weight	9.2 lbs	34 lbs	36 lbs	43 lbs
Shipping weight	14.2 lbs	39 lbs	41lbs	50 lbs
Shipping HxWxD	6.6" x 23.2" x 13.3"	9" x 23" x 18.6"	9" x 23" x 18.6"	11" x 17.64" x 23"
Color	Black [Silver front bezel]			
Environmental				
Operating environment	32 – 104 °F (0 – 40 °C)			
Operating relative humidity	0 – 95%			
Operating elevation	0-10000 feet (0-3000 meters)			
Storage temperature	5 – 113 °F (-15 – 45 °C) short term storage			
Storage relative humidity	0 – 95%, non-condensing			
Storage elevation	0-25000 feet (0-7620 meters)			
Audible noise at 1 meter from surface of unit	< 45 dBA			
Conformance				
Regulatory approvals	UL1778, CSA22.2 107.3			
Standard warranty	5-Year UPS and batteries			

Product family



SKU technical specifications

	SMTL2200RM2UC SMTL2200RM2UCNC*	SMTL3000RM2UC SMTL3000RM2UCNC*
Topology	Line Interactive	
Output		
Output power capacity	1920 Watts / 2200VA	2700 Watts / 3000VA
Nominal output voltage	120V	
Output voltage distortion	Less than 5% at full load	
Output frequency (sync to mains)	50/60 Hz +/- 3 Hz	
Waveform type	Pure sine wave	
Output connections	(6) NEMA 5-15R, (2) NEMA 5-20R	
Switched outlet group	Yes/1	
Efficiency at full load	>98%	
Input		
Nominal input voltage	120V	
Input frequency	50/60 Hz +/- 3 Hz (auto sensing)	
Input connections	NEMA 5-20P	NEMA L5-30P
Input voltage range for main operations	82Vac - 144Vac	
Batteries and runtime		
Battery type	Lithium-ion	
Replacement battery	APCRBC174-LI	
Runtime (Full load/ Half load)	7.4 / 17.5 min	5.3 / 12.6 min
Communications and management		
Interface port(s)	Serial (RJ45), SmartSlot, USB, APC SmartConnect (RJ45)	
SmartSlot™ interface availability	Yes. (AP9641 is pre-installed in -NC* models)	
Control panel	Multi-function LCD status and control console	
Physical		
Net HxWxD	3.39" x 17.01" x 26.89"	
Rack height	2U	
Net weight	70.26 lbs	75.38 lbs
Shipping weight	86.45 lbs	94.05 lbs
Shipping HxWxD	10" x 23.62" x 38.6"	
Color	Black [Silver front bezel]	
Environmental		
Operating environment	32 – 104 °F (0 – 40 °C)	
Operating relative humidity	0 – 95%	
Operating elevation	0-10000 feet (0-3000 meters)	
Storage temperature	5 – 113 °F (-15 – 45 °C) short term storage	
Storage relative humidity	0 – 95%, non-condensing	
Storage elevation	0-25000 feet (0-7620 meters)	
Audible noise at 1 meter from surface of unit	< 55 dBA	
Conformance		
Regulatory approvals	UL1778, CSA22.2 107.3	
Standard warranty	5-Year UPS and batteries	

Product family



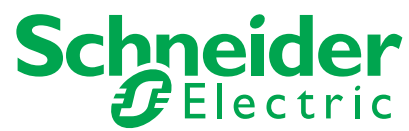
SKU technical specifications

	SMTL2K2RM2UCL SMTL2K2RM2UCLNC*	SMTL3KRM2UCL SMTL3KRM2UCLNC*
Topology	Line Interactive	
Output		
Output power capacity	1920W / 2200 VA	2700 Watts / 3000VA
Nominal output voltage	120V	
Output voltage distortion	Less than 5% at full load	
Output frequency (sync to mains)	50/60 Hz +/- 3 Hz	
Waveform type	Pure sine wave	
Output connections	(1) NEMA L5-20R. (6) NEMA 5-20R	(1) NEMA L5-30R, (6) NEMA 5-20R
Switched outlet group	Yes/1	
Efficiency at full load	>98%	
Input		
Nominal input voltage	120V	
Input frequency	50/60 Hz +/- 3 Hz (auto sensing)	
Input connections	NEMA L5-20P	NEMA L5-30P
Input voltage range for main operations	82Vac - 144Vac	
Batteries and runtime		
Battery type	Lithium-ion	
Replacement battery	APCRBC174-LI	
Runtime (Full load/ Half load)	7.4 min / 17.5 min	5.3 / 12.6 min
Communications and management		
Interface port(s)	Serial (RJ45), SmartSlot, USB (Type A), APC SmartConnect (RJ45), EPO port	
SmartSlot™ interface availability	Yes. (AP9641 is pre-installed in -NC* models)	
Control panel	Multi-function LCD status and control console	
Physical		
Net HxWxD	3.39" x 17.01" x 26.89"	
Rack height	2U	
Net weight	70.26 lbs	75.38 lbs
Shipping weight	86.45 lbs	94.05 lbs
Shipping HxWxD	10" x 23.62" x 38.6"	
Color	Black [Silver front bezel]	
Environmental		
Operating environment	32 – 104 °F (0 – 40 °C)	
Operating relative humidity	0 – 95%, non-condensing	
Operating elevation	0-10000 feet (0-3000 meters)	
Storage temperature	5 – 113 °F (-15 – 45 °C) short term storage	
Storage relative humidity	0 – 95%, non-condensing	
Storage elevation	0-25000 feet (0-7620 meters)	
Audible noise at 1 meter from surface of unit	< 55 dBA	
Conformance		
Regulatory approvals	UL1778, CSA22.2 107.3	
Standard warranty	5-Year UPS and batteries	

Information and product specifications contained in this document are subject to change without notice.

Runtimes listed are approximations based on ideal performance and environmental conditions, not guaranteed.

Life Is On



Learn more today!

apc.com/lithium-ion

Schneider Electric

One Boston Place
Floor 27
Boston, MA 02108
United States
www.apc.com

