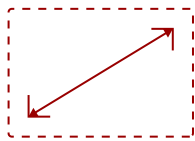


## LS741HD - 5,000 ANSI LUMENS 1080P LASER INSTALLATION PROJECTOR

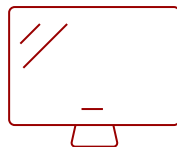
### Key Features

---

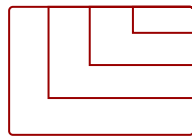
- 1. -lasting laser phosphor light source
- 2. o 5,000 ANSI lumens of brightness
- 3. y images up to 300"
- 4. ced weight and size compared to earlier generations
- 5. ible installation options
- 6. ehensive LAN control



30 - 300 in. / 0.76 - 7.62 m  
**DISPLAY**



**PANEL**



VGA(640 x 480) to WUXGA\_RB(1920 x 1200)\*RB-  
Reduced Blanking  
**RESOLUTION**



### Product Description

---

Bring powerful clarity to every presentation with the ViewSonic® LS741HD laser projector. Featuring the latest laser phosphor technology, this projector delivers 5,000 ANSI lumens of brightness, for sharp images even in environments with strong ambient lighting. Enjoy a maintenance-free projection experience without having to deal with complicated lamp replacements. Plus, this eco-friendly projection solution also features a compact design for easier transportation. This projector is capable of creating images up to 300" in 1080p Full HD resolution, making it perfect for boardrooms, lecture halls, auditoriums, and other large spaces. Enjoy easier setup and versatile usage across a wide variety of scenarios with features including 1.6x optical zoom, LAN control, H/V keystone, 4-corner adjustment, 360° projection, portrait mode and more.

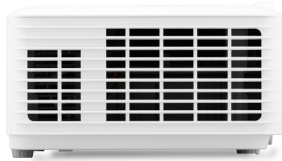
### Specifications

---

<b>UPC</b>	766907026092
<b>Light Source</b>	Laser
<b>Display Resolution</b>	Full HD (1920x1080)
<b>Display Resolution</b>	1920 x 1080
<b>Brightness (Lumens)</b>	5,000 ANSI
<b>Screen Size</b>	30 - 300 in. / 0.76 - 7.62 m
<b>Throw Distance</b>	0.93-14.88m ; 3-48.8ft (100"@10.17ft)
<b>Throw Ratio</b>	1.4-2.24
<b>Keystone</b>	Vertical ( $\pm 30^\circ$ ) / Horizontal ( $\pm 30^\circ$ )
<b>Light Source Life, Normal (hours)</b>	20000
<b>Light Source Life, Dynamic Eco-Mode (hours)</b>	30000
<b>Color Depth</b>	1.07 Billion Colors
<b>Dynamic Contrast Ratio</b>	3,000,000:1
<b>Aspect Ratio</b>	16:9
<b>Frequency Horizontal</b>	15K-102KHz
<b>Frequency Vertical</b>	24-120Hz
<b>PC Resolution (max)</b>	VGA(640 x 480) to WUXGA_RB(1920 x 1200)*RB-Reduced Blanking
<b>Mac® Resolution (max)</b>	480i, 480p, 576i, 576p, 720p, 1080i, 1080p
<b>USB 2.0 Type A</b>	1 (5V/1.5A) Power, Service
<b>Ethernet LAN (RJ45)</b>	1
<b>3.5mm Audio Out</b>	1
<b>Control (RS232)</b>	1
<b>HDMI 1.4 (with HDCP 1.4)</b>	2
<b>Internal Speakers</b>	15W (x1)
<b>Voltage</b>	Input: 100~240V & Output: 19.5VDC / 11.79A
<b>Consumption (typical)</b>	210W
<b>Stand-by</b>	<0.5W
<b>Physical Controls</b>	Keypad, Power key
<b>On Screen Display</b>	Display, Image, Power Management, Basic, Advanced, System, Information (See user guide for full OSD functionality)
<b>Temperature</b>	32-104° F (0 - 40° C)
<b>Kensington Lock Slot</b>	1
<b>Net (lbs)</b>	6.62
<b>Gross (lbs)</b>	10.36
<b>Net (kg)</b>	3
<b>Gross (kg)</b>	4.7

<b>Packaging (in.)</b>	15.7x11x6.1in
<b>Physical (in.)</b>	11.3x8.5x5 in
<b>Packaging (mm)</b>	400x280x155mm
<b>Physical (mm)</b>	286x216x129mm
<b>Regulations</b>	cTUVus
<b>Package Contents</b>	Projector, power cable, remote control, Quick Start Guide,
<b>Warranty</b>	Three-year limited warranty on parts and labor, 1st year free Express Exchange® service. (One year Express Exchange Service requires product registration).
<b>Recycle/Disposal</b>	Please dispose of in accordance with local, state or federal laws.

UPC: 766907026092



**Contact Sales**

[ViewSonic.com](http://ViewSonic.com)

888.881.8781

email:

[salesinfo@viewsonic.com](mailto:salesinfo@viewsonic.com)