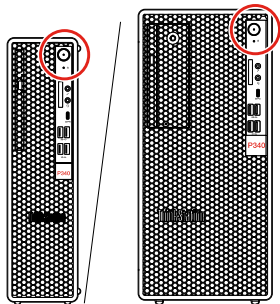
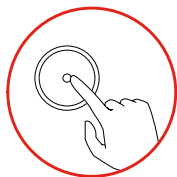
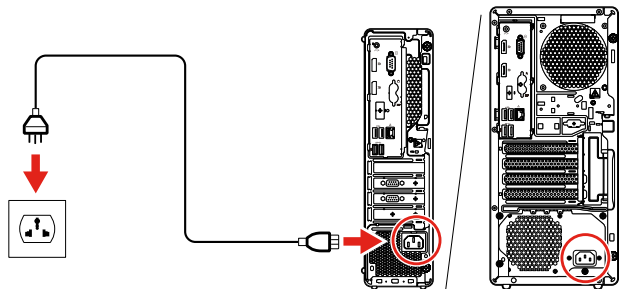
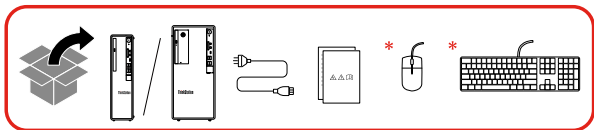


**ThinkStation** P340

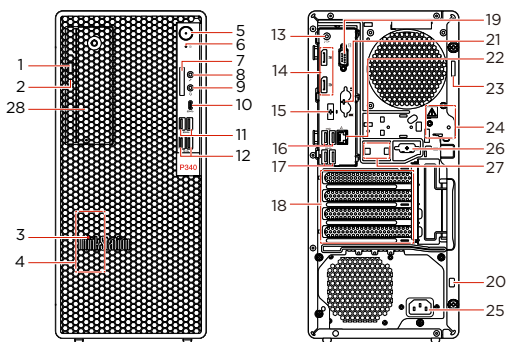
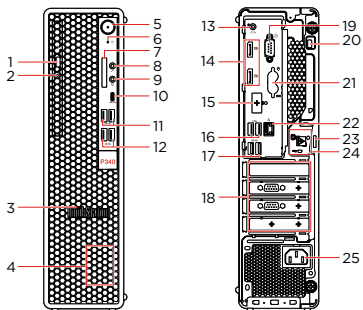
# Setup Guide

**Lenovo**

# Initial Setup



# Overview



- \* 1. Optical drive eject button
- \* 2. Optical drive activity indicator
- 3. ThinkStation® LED
- 4. Internal speaker
- 5. Power button
- 6. Storage drive activity indicator
- \* 7. SD-card slot
- 8. Microphone connector
- 9. Headset connector
- 10. USB-C (3.2 Gen 1) connector
- 11. USB 3.2 Gen 1 connectors
- 12. USB 3.2 Gen 2 connectors
- 13. Audio line-out connector
- 14. DisplayPort® out connectors
- \* 15. Optional connector
- 16. USB 2.0 connectors
- 17. USB 3.2 Gen 1 connectors
- 18. PCI-Express card area
- 19. Serial connector
- 20. Security-lock slot
- \* 21. PS/2 keyboard and mouse connectors
- 22. Ethernet connector
- 23. Padlock loop
- 24. E-lock slots
- 25. Power cord connector
- \* 26. Serial connector
- 27. Smart cable clip slots
- \* 28. Flex bay

 Read the statement on USB transfer rate in the *User Guide*. Refer to the *Safety and Warranty Guide* for accessing the *User Guide*. Read the statement on USB transfer rate in the *User Guide*. Refer to the *Safety and Warranty Guide* for accessing the *User Guide*.

# Customer Replacement Units (CRUs)

---

- Chassis beam
- Coin-cell battery
- Computer cover
- E-lock
- Front bezel
- Front fan
- Heatsink-and-fan assembly
- Graphics card holder
- Graphics card bracket
- Heatsink for M.2 solid-state drive
- Keyboard
- M.2 solid-state drive
- M.2 solid-state drive bracket
- Memory module
- Mouse
- Optical drive
- Optical drive bracket
- Optical drive cage
- PCI-Express card
- Power cord
- Power supply assembly
- Rear fan
- Storage drive
- Storage drive bracket
- Storage drive cage
- Storage drive converter
- Smart cable clip
- Vertical stand

Refer to the *User Guide* for CRU definition.

# Additional information

---

## European Union – compliance with the Radio Equipment Directive

Hereby, Lenovo (Singapore) Pte. Ltd., declares that the radio equipment type ThinkStation P340 is in compliance with Directive 2014/53/EU.

The full text of the system EU declaration of conformity is available at the following Internet address:

<https://www.lenovo.com/us/en/compliance/eu-doc>

This radio equipment operates with the following frequency bands and maximum radio-frequency power:

Technology	Frequency band [MHz]	Maximum transmit power
WLAN 802.11b/g/n/ax	2400 - 2483.5	< 20 dBm
WLAN 802.11a/n/ac/ax	5150 - 5725	< 23 dBm
WLAN 802.11a/n/ac/ax	5725 - 5875	< 13.98 dBm
Bluetooth BR/EDR/LE	2400 - 2483.5	< 20 dBm

Usage of all the radio devices is limited to indoor in the band 5150 MHz to 5350 MHz (channels 36, 40, 44, 48, 52, 56, 60, 64).



---

**First Edition (May 2020)**

**© Copyright Lenovo 2020.**

LIMITED AND RESTRICTED RIGHTS NOTICE: If data or software is delivered pursuant to a General Services Administration "GSA" contract, use, reproduction, or disclosure is subject to restrictions set forth in Contract No. GS-35F-05925.

**Reduce | Reuse | Recycle**

