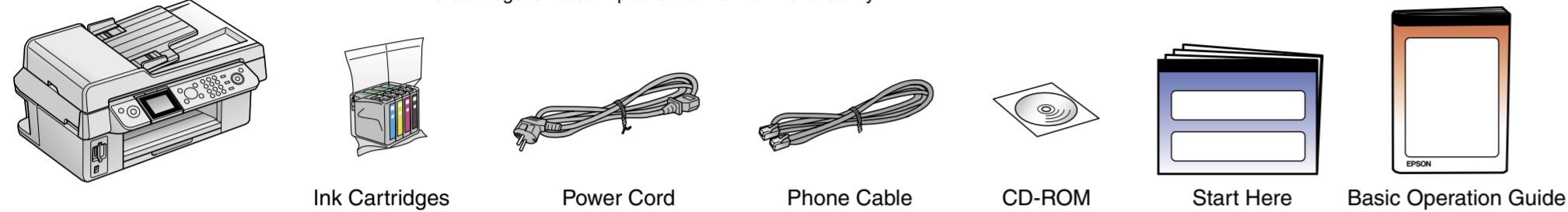


Start Here

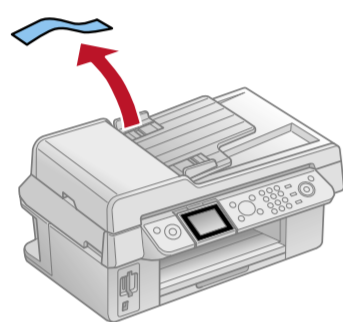
1. Unpacking

Note:
Do not open the ink cartridge package until you are ready to install it in the printer.
The cartridge is vacuum packed to maintain its reliability.



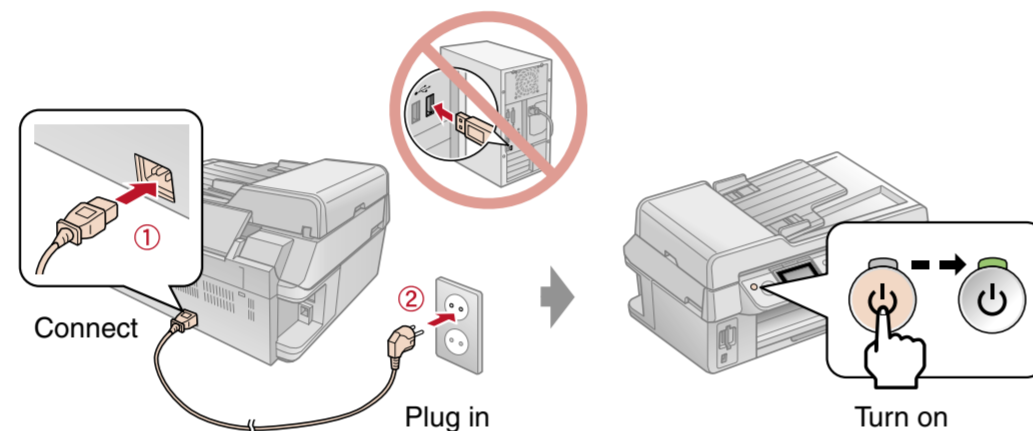
Ink Cartridges Power Cord Phone Cable CD-ROM Start Here Basic Operation Guide

2. Removing Protective Tape



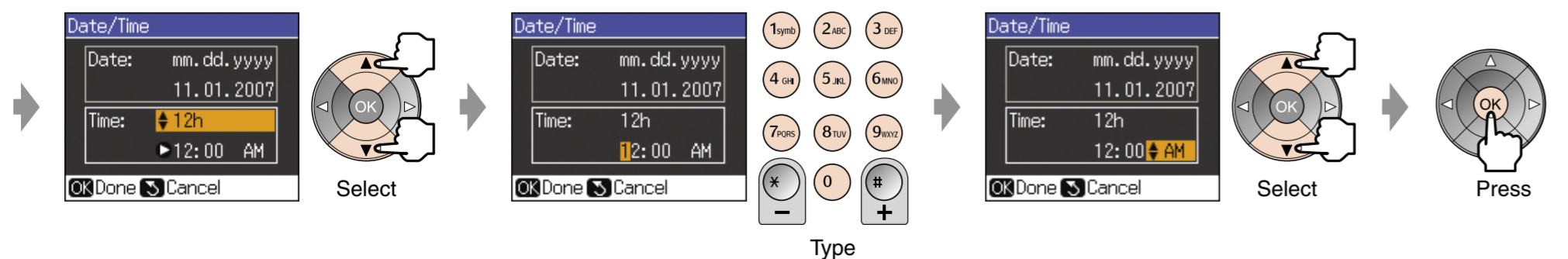
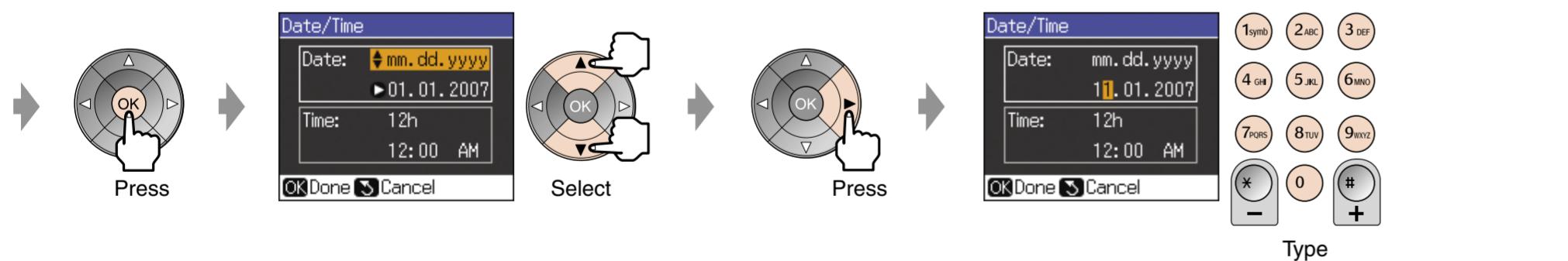
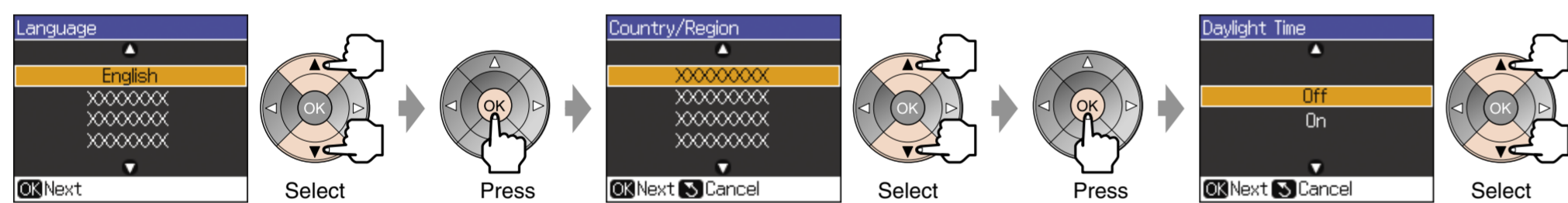
Remove all tape

3. Turning On

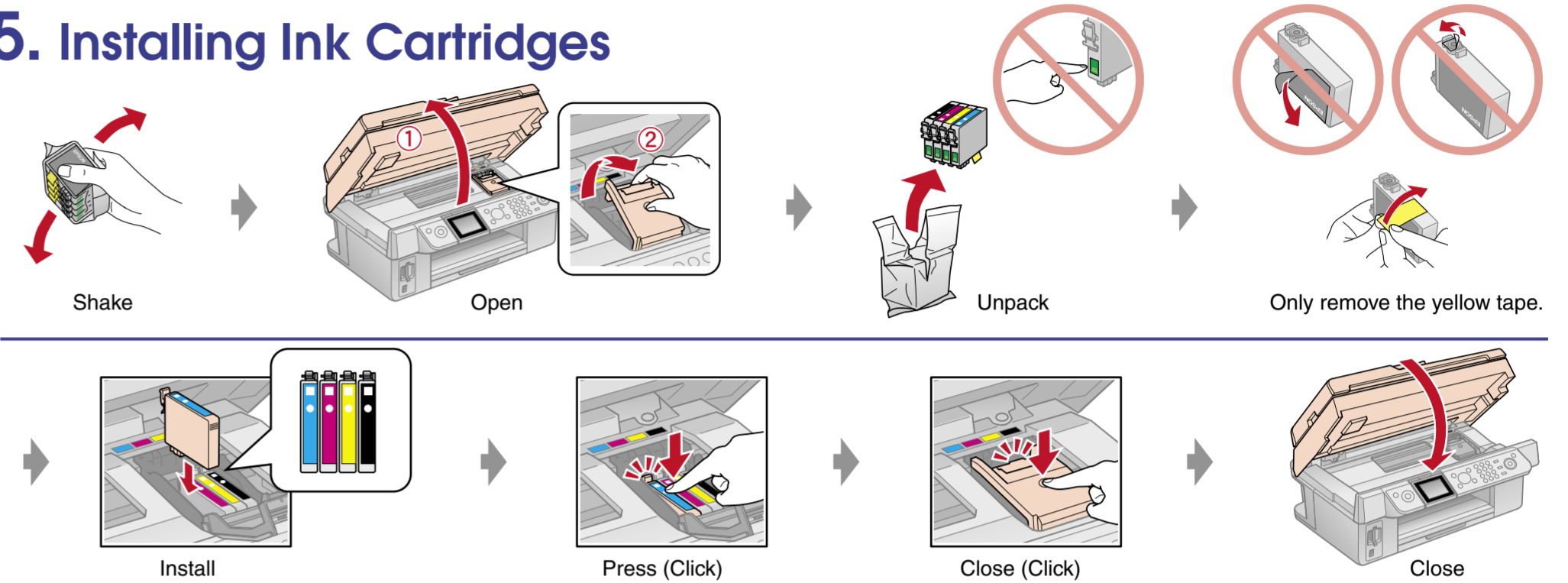


Connect Plug in Turn on

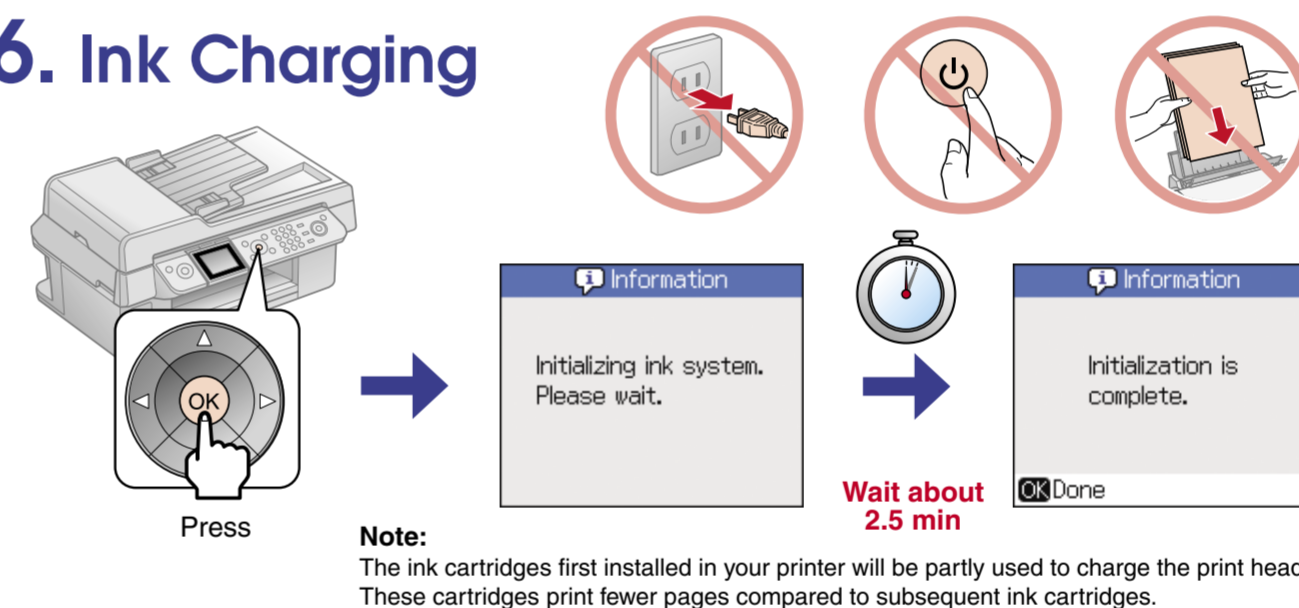
4. Setting Up LCD Panel Display



5. Installing Ink Cartridges

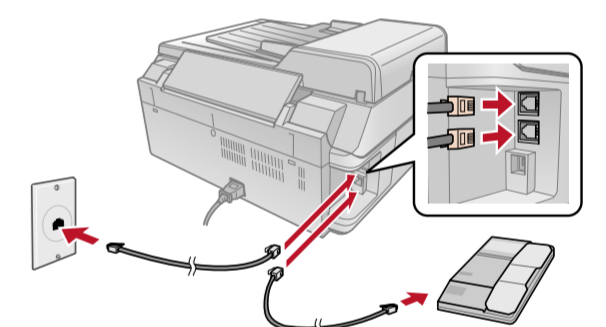


6. Ink Charging

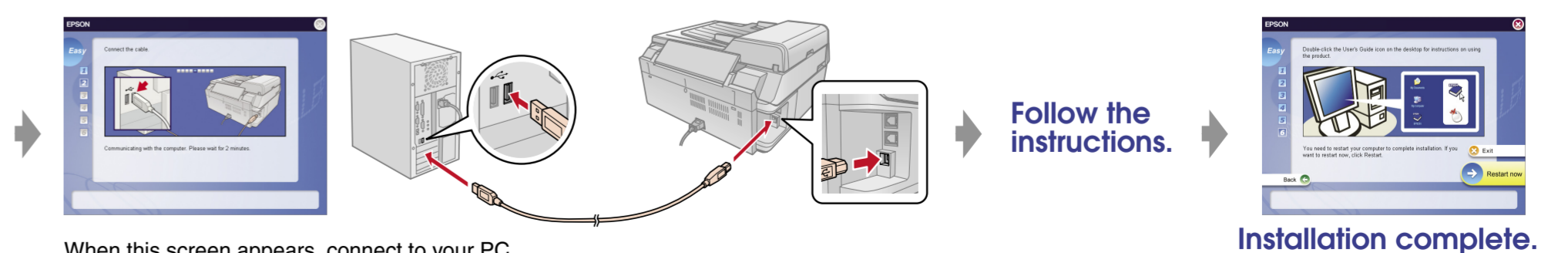
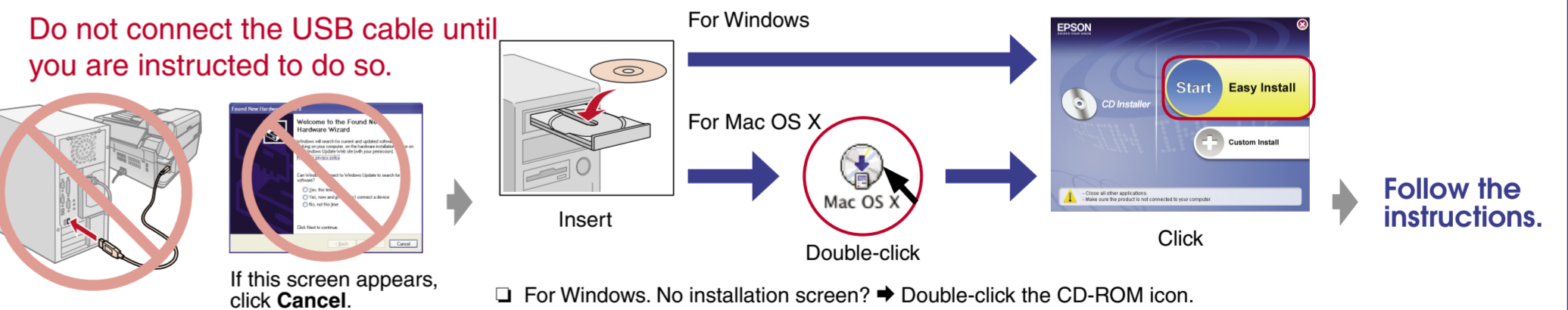


Note:
The ink cartridges first installed in your printer will be partly used to charge the print head. These cartridges print fewer pages compared to subsequent ink cartridges.

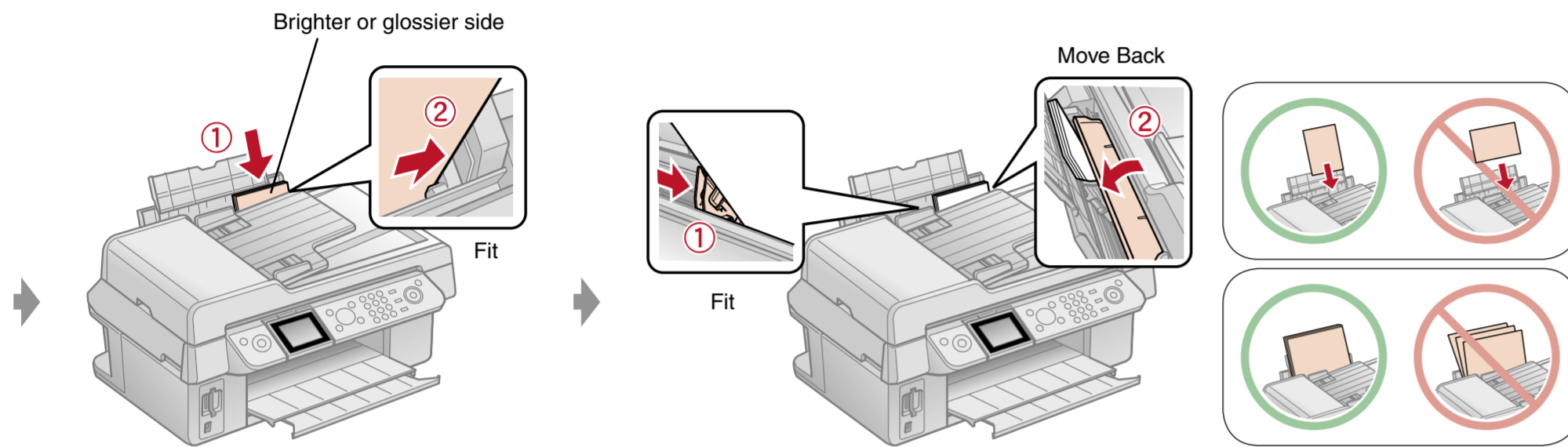
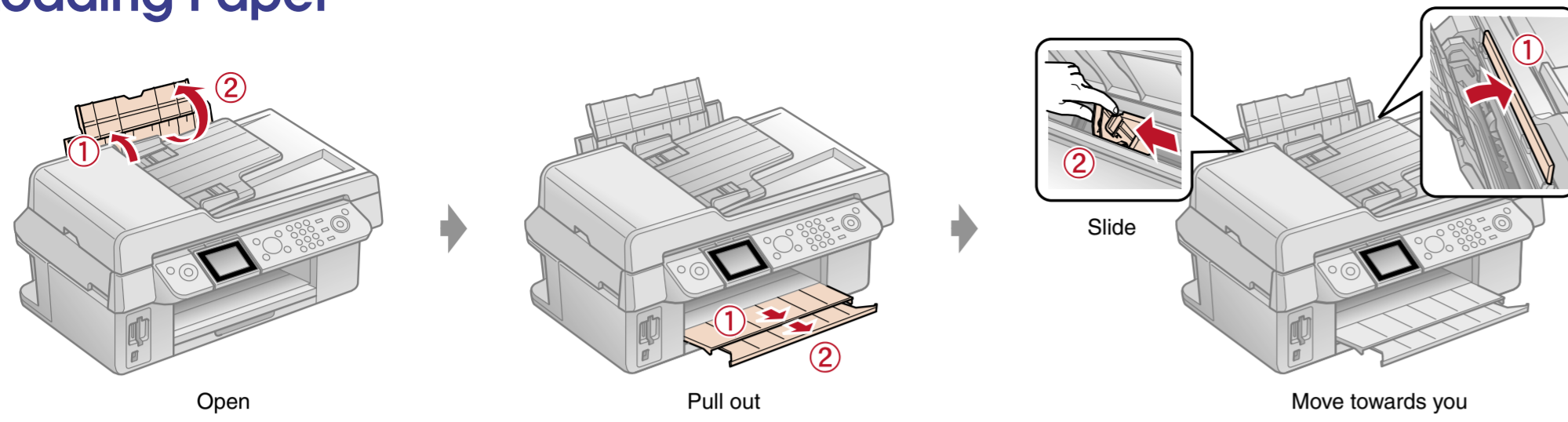
7. Connecting to a Phone Line.



8. Installing the Software

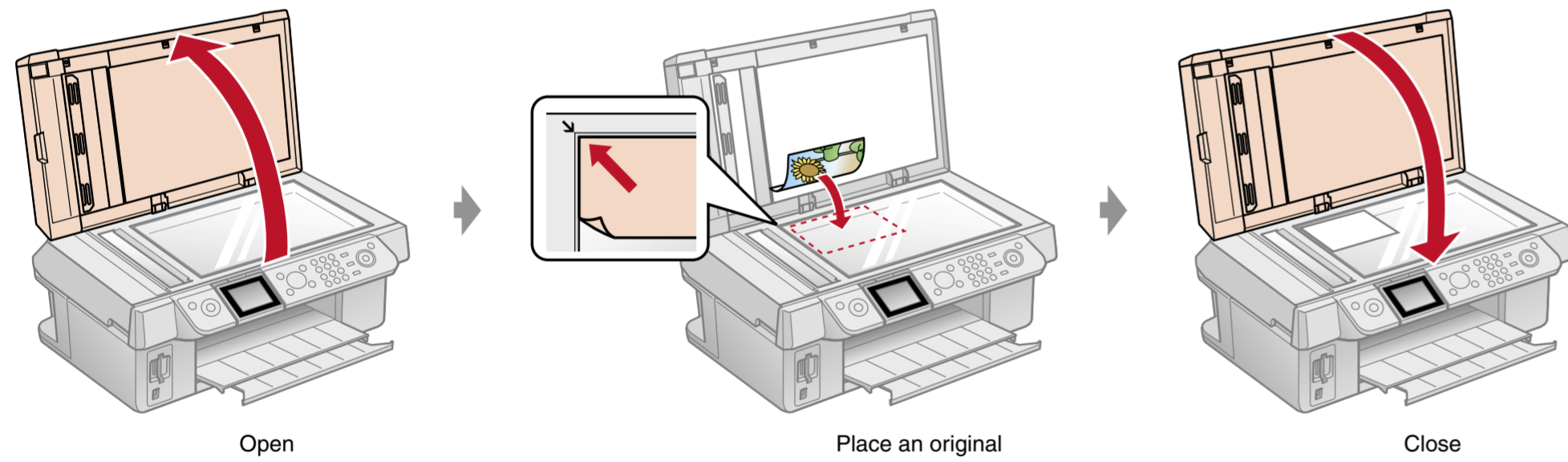


Loading Paper

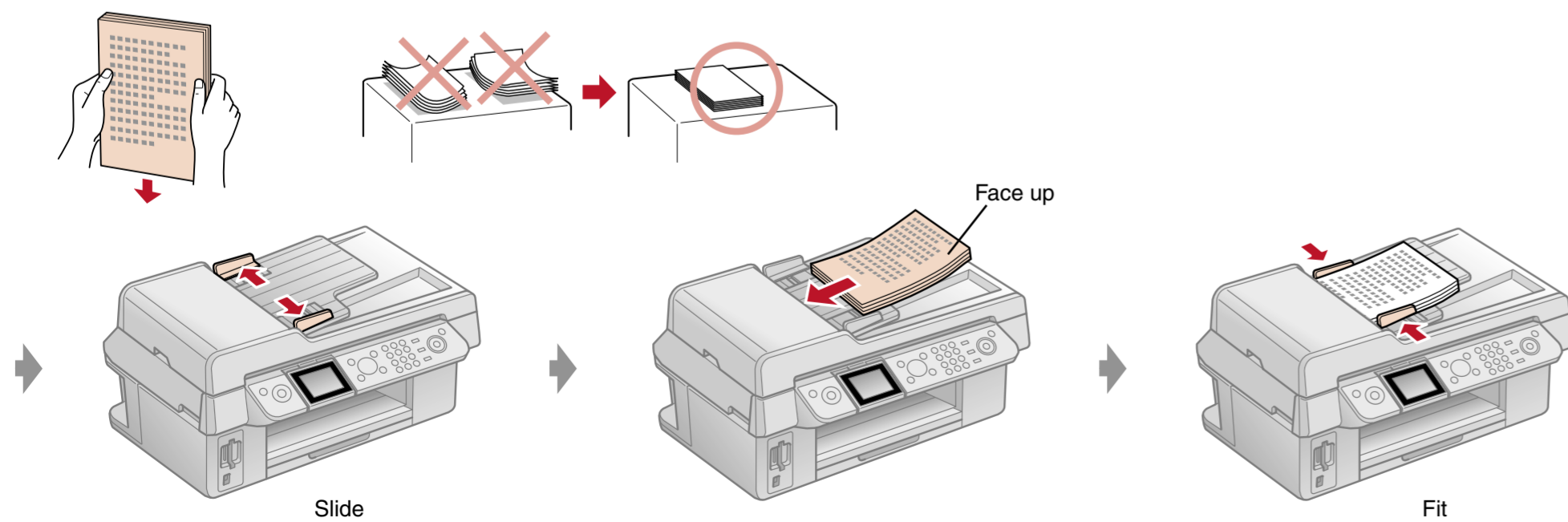


Placing an Original

On the document table



In the automatic document feeder



Getting More Information

