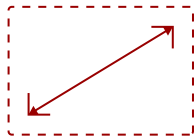


## LS510WH-2 - 3,000 ANSI LUMENS WXGA LED BUSINESS/EDUCATION PROJECTOR

### Key Features

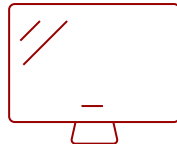
---

- Bright 3000 Lumens WXGA LED projector with advanced visual features
- Latest LED technology provides an extended lifespan of up to 30,000 hours
- 1.1x optical zoom, 40-degree vertical keystone and 360 degree projection
- This projector can be configured to automatically turn on and off
- Supports most media players, PCs, Macs, and mobile devices with inputs such as HDMI, USB, Ethernet LAN

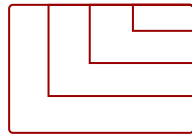


30 - 300 in. / 0.76 - 7.62 m

**DISPLAY**



**PANEL**



VGA(640 x 480) to Full HD(1920 x 1080)

**RESOLUTION**



### Product Description

---

The eco-friendly ViewSonic LS510WH-2 WXGA projector uses the latest LED technology for a brighter, more vivid display. With 3,000 ANSI lumens and no need for complicated lamp replacements, the LS510WH serves as a cost-effective presentation solution for both education and enterprise organizations. Experience stunning images with breathtaking colors for boardrooms, lecture halls and other public spaces on a long-lasting projection solution equipped with 125% Rec. 709 technology. Enjoy convenient features like instant power on/off, streamlined software updates and flexible setup.

### Specifications

---

More Information

UPC

766907018097

|  |  |
|--|--|
| <b>Light Source</b>                      | DLP LED  |
| <b>Display Resolution</b>                | WXGA (1280x800)  |
| <b>Display Resolution</b>                | 1280 x 800   |
| <b>Brightness (Lumens)</b>               | 3,000 ANSI   |
| <b>Screen Size</b>                       | 30 - 300 in. / 0.76 - 7.62 m   |
| <b>Throw Distance</b>                    | 1m-10.98m (100""@3.34m)  |
| <b>Throw Ratio</b>                       | 1.3-1.56   |
| <b>Keystone</b>                          | Vertical (+/- 40°)   |
| <b>Lens</b>                              | 1.1x optical zoom  |
| <b>Light Source Life, Normal (hours)</b> | 30000  |
| <b>Color Depth</b>                       | 1.07 Billion Colors  |
| <b>Dynamic Contrast Ratio</b>            | 3,000,000:1  |
| <b>Aspect Ratio</b>                      | 16:10  |
| <b>Input Lag</b>                         | 37ms   |
| <b>Frequency Horizontal</b>              | 15K~102KHz   |
| <b>Frequency Vertical</b>                | 23-120Hz   |
| <b>PC Resolution (max)</b>               | VGA(640 x 480) to Full HD(1920 x 1080)   |
| <b>Mac® Resolution (max)</b>             | 480i, 480p, 576i, 576p, 720p, 1080i, 1080p   |
| <b>USB 2.0 Type A</b>                    | 1  |
| <b>Ethernet LAN (RJ45)</b>               | 1  |
| <b>3.5mm Audio Out</b>                   | 1  |
| <b>3.5mm Audio In</b>                    | 1  |
| <b>Control (RS232)</b>                   | 1  |
| <b>HDMI 1.4 (with HDCP 1.4)</b>          | 1  |
| <b>Internal Speakers</b>                 | 2W (x1)  |
| <b>Voltage</b>                           | 100-120V+/- 10%, 50/60Hz   |
| <b>Consumption (typical)</b>             | 240W   |
| <b>Stand-by</b>                          | <0.5W  |
| <b>Physical Controls</b>                 | Keypad, Power key  |
| <b>On Screen Display</b>                 | Display, Image, Power Management, Basic, Advanced, System, Information (See user guide for full OSD functionality) |
| <b>Temperature</b>                       | 32-104° F (0 - 40° C)  |
| <b>Kensington Lock Slot</b>              | 1  |
| <b>Net (lbs)</b>                         | 5.8  |
| <b>Gross (lbs)</b>                       | 8.3  |
| <b>Net (kg)</b>                          | 2.65   |

|                         |  |
|-------------------------|--|
| <b>Gross (kg)</b>       | 3.75   |
| <b>Packaging (in.)</b>  | 11.5 x 8.7 x 4.5   |
| <b>Physical (in.)</b>   | 15.2 x 11.8 x 7.4  |
| <b>Packaging (mm)</b>   | 293 x 221 x 115  |
| <b>Physical (mm)</b>    | 365 x 300 x 188  |
| <b>Regulations</b>      | cTUVus   |
| <b>Package Contents</b> | Projector, power cable, remote control, Quick Start Guide  |
| <b>Warranty</b>         | Three-year limited warranty on parts and labor, 1-year limited warranty on the light source, 1st year free Express Exchange® service. (One year Express Exchange Service requires product registration). |
| <b>Recycle/Disposal</b> | Please dispose of in accordance with local, state or federal laws.   |

UPC: 766907018097



**Contact Sales**  
[ViewSonic.com](http://ViewSonic.com)  
 888.881.8781  
 email:  
[salesinfo@viewsonic.com](mailto:salesinfo@viewsonic.com)