



Network

Dome

XNV-6081RE

2MP IR PoE Extender Vandal Dome Camera



Key Features

- Max. 2MP resolution
- PoE Extender (Main cam, extension cam)
- PoE out :Max. 12.95W@80m
- 2.8~12mm(4.3x) motorized varifocal
- 0.015Lux@F1.4 (Color), 0Lux (B/W, IR LED on)
- IR viewable length 50m
- Day & Night (ICR), WDR (150dB)
- Hallway View, WiseStreamII Support
- Video & audio analytics, Audio playback
- Business Intelligence(People counting, Queue management, Heatmap)
- DIS and shock detection with built-in gyro sensor
- Modular structure, PoE+ in/ PoE out
- IP66/IP67/IP6K9K, IK10+, NEMA4X

Compatible Devices



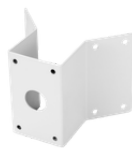
SBC-180B



SBP-300LMW



SBP-300WMW1



SBP-300KMW



SBP-300BW



SBP-300PMW



SBP-300WMW



SBP-390WMW2



SPB-VAN85W



SBP-300NBW



SBP-300CMW



SBP-187HMW

XNV-6081RE

2MP IR PoE Extender Vandal Dome Camera



Specifications

Video

Imaging Device	Size	1/2.8"
	Type	CMOS
Resolution	320x240, 1280x720, 1280x1024, 720x480, 1280x960, 800x448, 800x600, 1920x1080, 640x360, 640x480, 1024x768, 720x576	
Max. Framerate	H.265/H.264	60fps/50fps(60Hz/50Hz)
	MJPEG	30fps
Min. Illumination (Lux)	Color(1/30sec, 30IRE)	0.015
	BW(1/30sec, 30IRE)	0.0015
Video Out	CVBS: 1.0 Vp-p / 75Ω composite for installation, USB: Micro USB Type B	

Lens

Focal Length (mm)	2.8~12	
Zoom Ratio	Optical	4.3x
Max Aperture Ratio (F number)	Wide	1.4
	Tele	3.6
Angular Field of View	Horizontal	119.5°~27.9°
	Vertical	62.8°~15.7°
	Diagonal	142.1°~32.0°
Min. Object Distance	0.5m(1.64ft)	
Focus Control	Manual, Simple focus	
Lens Type	DC auto iris(IR corrected), P iris(IR corrected)	

Pan / Tilt / Rotate

Pan / Tilt / Rotate Range	Pan	0°~360°
	Tilt	-45°~85°
	Rotate	0°~355°

Operational

Day & Night	Auto(ICR)
Backlight Compensation	BLC, WDR, SSSR, HLC

Operational

Wide Dynamic Range (dB)		150
Digital Noise Reduction		SSNR V
Digital Image Stabilization		Support(built-in gyro sensor)
Defog		Support
Motion Detection	Quantity	8ea
	Shape	8point Polygonal zones
Privacy Masking	Quantity	32ea
	Shape	Rectangular zones
	Color / Option	Gray, Mosaic, Green, Red, Blue, White, Black
Gain Control		High, Low, Middle
White Balance		ATW, Manual, Outdoor, Indoor, AWC
LDC		Support
Electronic Shutter	Mode	Maximum, Anti flicker, Minimum
	Speed Range	2~1/12,000sec
Digital PTZ		Support
Video Rotation		Hallway view(90°/270°), Flip, Mirror
Alarm Interface	In/Out	Input 1ea, Output 1ea
Alarm Triggers		Network disconnect, Alarm input, Analytics
Alarm Events When Alarm Trigger Occurred		Handover: PTZ preset, send message by HTTP/HTTPS/TCP, Notification: e-mail, Audio clip playback, File upload(image): e-mail/FTP, Recording: SD/SDHC/SDXC or NAS recording at event triggers, Alarm output
Audio In		Selectable(mic in/line in)
Audio Out		Line out
Light Type		IR LED
Light Viewable Length	IR	50m(164.04ft)
IR Wavelength		850nm

Analytics

Analytics Events	Normal	Virtual line(Crossing, Direction) , Fog detection, Sound classification, Tampering, Motion detection, Virtual area(Lotering, Intrusion, Enter/Exit, Appear/Disappear), Face detection, Defocus detection, Shock detection, Audio detection, Digital auto tracking
Business Intelligence	Normal	People counting, Queue management, Heatmap

Network

Ethernet	Metal shielded RJ-45(10/100BASE-T)
Video Compression	H.265/H.264: Main/Baseline/High, MJPEG
Audio Compression	AAC-LC: 48Kbps at 16KHz, G.726: 16Kbps, 24Kbps, 32Kbps, 40Kbps, G.711 u-law /G.726 selectable, G.726(ADPCM) 8KHz, G.711 8KHz
Smart Codec	WiseStream II , Manual

Network

Bitrate Control		H.265/H.264: CBR or VBR, MJPEG: VBR
Streaming	Unicast	Up to 20 users
	Multicast	Support
	Multiple Streaming	Up to 10 profiles
Protocol		FTP, RTP(UDP), PIM-SM, IPv4, HTTPS, NTP, TCP/IP, ARP, DHCP, RTCP, IPv6, UDP/IP, Bonjour, DNS, SNMPv1/v2c/v3(MIB-2), RTP(TCP), SSL/TLS, QoS, SMTP, DDNS, IGMP, HTTP, UPnP, LLDP, RTSP, ICMP, SRTP(TCP, UDP Unicast)
Application Programming Interface	ONVIF	T, S, G
	Others	SUNAPI(HTTP API), Hanwha Vision Open Platform
Direct Cloud Connection		Optional (needs gateway)

Security

OS / Firmware Protect	Encrypted firmware, Signed firmware, Secure boot
User authentication	Digest authentication
Network authentication	IEEE 802.1X(EAP-TLS, EAP-LEAP)
Secure Communication	WSS(WebSocket Secure), SRTP, HTTPS
Access Control	IP-based access control
Data Protect	Encrypt compress for live recording file export, Encryption credentials
Audit	Access / System / Event Log management
Device ID	Device certificate(Hanwha Vision Root CA)
Secure Storage	SDcard partition encrypt(AES-256)

General

Memory	RAM	1GB
	Flash	256MB
Edge Storage	Micro SD/SDHC/SDXC	Max. 512GB x 2slot(Total 1TB)

Environmental & Electrical

Operating Condition	Temperature	-50°C~+60°C(-58°F~+140°F)
	Humidity	0~90% RH(non-condensing)
	Others	Start up should be done at above -35°C
Storage Condition	Temperature	-50°C~+60°C(-58°F~+140°F)
	Humidity	0~90% RH(non-condensing)
Input Voltage		PoE+(IEEE802.3at, Class4)
Power Consumption	PoE	Max. 25.5 W (Main CAM+Extension CAM), Typical 10.2W (Main CAM)
	Others	PoE Out: Max. 12.95W at 80m using CAT5/5E cable

Mechanical

Color	White
--------------	-------

Mechanical

Material	Aluminum
RAL Code	RAL9003
Product Dimensions	ø180x125mm(7.09x4.92")
Product Weight	1750g(3.86lb)
Compatible Conduit Hole	19.1mm(3/4")(M25)

Certifications & Standards

Environment	NEMA 250 type 4X, IEC 60529 IP66, ISO 20653 IP6K9K, IEC 60529 IP67, IEC 62262 IK10+
-------------	---

DORI (EN62676-4 standard)

Detect (25PPM/ 8PPF)	Wide	22.4m(73.49ft)
	Tele	155m(508.53ft)
Observe (63PPM/ 19PPF)	Wide	9.0m(29.53ft)
	Tele	62m(203.41ft)
Recognize (125PPM/ 38PPF)	Wide	4.5m(14.76ft)
	Tele	31m(101.71ft)
Identify (250PPM/ 76PPF)	Wide	2.2m(7.22ft)
	Tele	15m(49.21ft)

XNV-6081RE

2MP IR PoE Extender Vandal Dome Camera



CAD

Unit: mm [inch]

