

Belkin IsoClave RED/BLACK SKVM Series.

Secure. Certified. Connected.



Port isolation that speaks to security needs.

The Belkin IsoClave RED/BLACK Secure KVM Series was designed to meet electrical isolation requirements specified in the Committee on National Security Systems Advisory Memorandum (CNSSAM) TEMPEST/01-13, Table 2 and Table 6. Digital signaling requires 60dB of isolation between red and black circuits within the Secure KVM switch.

The IsoClave RED/BLACK SKVM Series provides a commercial off-the-shelf solution to meet the stringent red/black requirements of the Committee on National Security Systems and Certified TEMPEST Technical Authority (CTTA) calling for 60dB of isolation for digital signaling. These are detailed in CNSSAM TEMPEST/01-13, Table 2 and Table 6. (Note: Electrical isolation does not imply TEMPEST certification.)

The IsoClave RED/BLACK SKVM Series features isolating host USB and video cables preinstalled with tamper-resistant screws to prevent unauthorized cable attachment. To further enhance security, HDMI, analog audio, and RCU ports are blocked to prevent unauthorized use. This security optimized solution enables the highest level of isolation in an off-the-shelf SKVM.

Belkin IsoClave RED/BLACK Secure KVM is the ideal solution for systems using high-performance DisplayPort graphics outputs

as well as monitor inputs. The platform is fully compatible with DisplayPort supporting resolutions of UHD 4K @60Hz, and it is truly plug and play, offering fully populated cable connections that require no assembly.

Customizable port coloring and naming on the front panel of the Belkin SKVM facilitates channel identification, situational awareness, and reduces operator errors. Belkin's IsoClave RED/BLACK SKVM Series includes preprogrammed colors on ports 1 and 2 (port 1 is green, port 2 is red), with the option to change the color scheme.

Designed for the ultimate user experience, Belkin SKVMs are compatible with the optional Belkin KVM Remote Control with Integrated Keyboard. Using configurable channel designator lighting, the front panel and remote control provide visual indication as to the security enclave the operator is working on, eliminating potential user errors.



Belkin SKVMs are designed for the latest Common Criteria and NIAP cybersecurity standard: NIAP Protection Profile for Peripheral Sharing Devices 4.0. NIAP PP PSD 4.0 adds to the strict signal isolation requirements of NIAP PP PSS 3.0 and defines the latest standard for military-grade cybersecurity. Further, optical data diodes on all USB connections ensure unidirectional data flow of HID filtered information.

All Belkin SKVMs are TAA-compliant and designed and assembled in the United States. Each unit is assembled with an always-on, battery-backed, active anti-tamper mechanism that will immediately render it permanently inoperable in the event of a breach. Shipped in unique tear-away packaging, the units are designed to be tamper-proof from the factory to delivery at the end site. U.S.-based technical support, free advanced replacements, and a standard 3-year warranty with options for up to five years of coverage provide unsurpassed customer support.

The IsoClave RED/BLACK SKVM Series represents a no-compromise solution against today's cyber threats for mission-critical applications in government, military, financial, healthcare, energy, and any application seeking guaranteed isolation between systems at the operator's desk.

Key features and benefits

- **Designed to meet stringent requirements for red/black isolation between enclaves specified in CNSSAM TEMPEST/01-13, Table 2 and Table 6, calling for 60dB of digital signal isolation. Configured for the latest Common Criteria and NIAP cybersecurity standard: NIAP Protection Profile for Peripheral Sharing Devices 4.0 and TAA compliant.**
- **Secure and ready-to-deploy platform:**
Preinstalled isolating host cables enable efficient deployment, while providing the highest level of isolation in any commercial SKVM.
- **Situational awareness:**
Convenient preconfigured port coloring ensures front panel facilitates channel identification, reducing operator errors (port 1 = green, port 2 = red).
- **Innovations for optimal user experience:**
Compatible with the Belkin KVM Remote Control with Integrated Keyboard, delivering the ultimate solution for decluttering the desk while enhancing the operator's awareness of the security domain they're working in.
- **Designed for use on government and military networks:**
Configured to meet NIAP Protection Profile PSD 4.0.
- **Tamper-proof system:**
Always-on, battery backed, active anti-tamper circuit protects the unit while in transit and after deployment from a breach.
- **TAA compliant:**
Assembled in the USA, U.S.-based technical support, secure packaging ensures integrity from factory to user site.
- DisplayPort and USB-A to B isolating host cables with ferrite chokes are preinstalled with tamper-resistant screws to ensure compatible cables are used out-of-the-box.
- HDMI host and console video ports, analog audio ports, and RCU port (remote control) blocked to ensure optimal security and improve isolation. Users change SKVM channel via front of the SKVM unless they are using the Belkin KVM Remote Control with Integrated Keyboard (F1DN008KBD).

Choose the model that suits you best.

Designed for NIAP Protection Profile PSD 4.0 compliance and meets CNSSAM-TEMPEST/01-13, Table 2 and Table 6 requirements.



F1DN102KVM-UN4C
Belkin IsoClave RED/BLACK Secure KVM Switch, 2-Port Single Head

Reference Universal 2nd Gen Secure KVM Switch, 2-Port Single Head No CAC (SKU F1DN102KVM-UNN4) for NIAP compliance.



F1DN104KVM-UN4C
Belkin IsoClave RED/BLACK Secure KVM Switch, 4-Port Single Head

Reference Universal 2nd Gen Secure KVM Switch, 4-Port Single Head No CAC (SKU F1DN104KVM-UNN4) for NIAP compliance.



F1DN202KVM-UN4C
Belkin IsoClave RED/BLACK Secure KVM Switch, 2-Port Dual Head

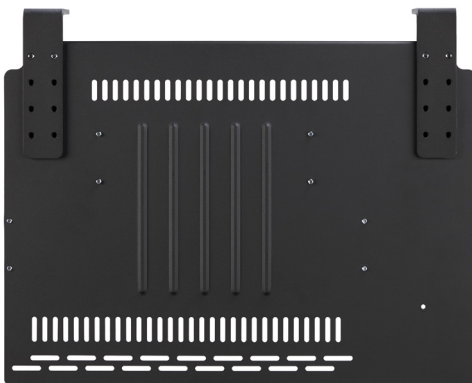
Reference Universal 2nd Gen Secure KVM Switch, 2-Port Dual Head No CAC (SKU F1DN202KVM-UNN4) for NIAP compliance.



F1DN204KVM-UN4C
Belkin IsoClave RED/BLACK Secure KVM Switch, 4-Port Dual Head

Reference Universal 2nd Gen Secure KVM Switch, 4-Port Dual Head No CAC (SKU F1DN204KVM-UNN4) for NIAP compliance.

Mounting Options

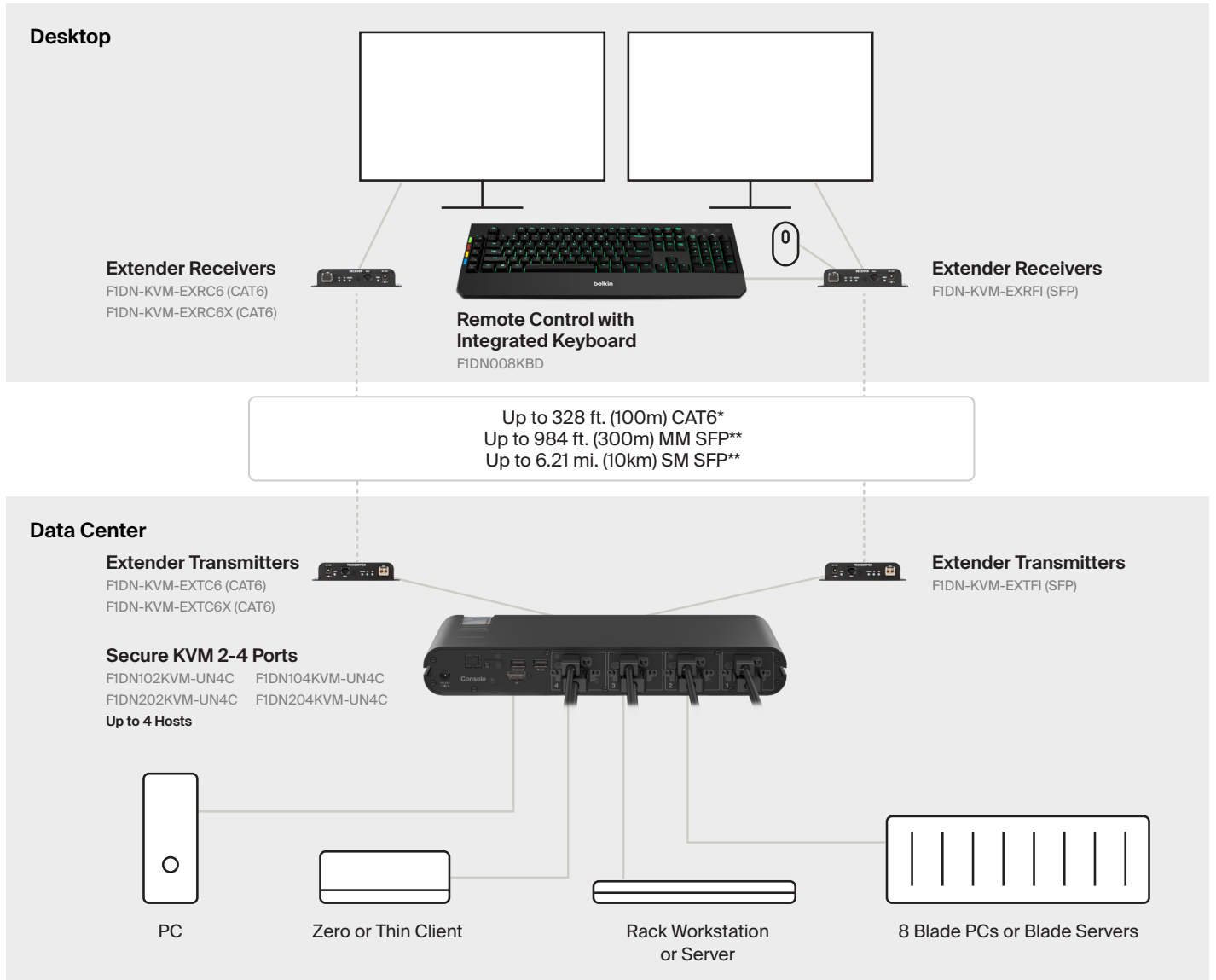


F1DN-WSMOUNT
Work Surface and Cubicle Mount



F1DN-KVM-MOUNT
Under-Desk Mount

Use Case



Belkin IsoClave RED/BLACK Secure KVM Series

| Part Number | F1DN102KVM-UN4C | F1DN202KVM-UN4C | F1DN104KVM-UN4C | F1DN204KVM-UN4C |
|--|--|---|---|---|
| No. of Computers | 2 | 2 | 4 | 4 |
| No. of Displays | 1 | 2 | 1 | 2 |
| Max Resolutions Supported | 3840 x 2160 pixels (UHD 4K) @ 60Hz | | | |
| Console Ports (Devices) | | | | |
| Console Mouse and Keyboard Ports | USB Type-A female connector (1 designated port for mouse and 1 designated port for keyboard) | | | |
| Console Display Ports | 1x DP 1.2 | 2x DP 1.2 | 1x DP 1.2 | 2x DP 1.2 |
| Computer Ports | | | | |
| Computer Display Ports | 2x DP 1.2 | 2x DP 1.2 | 4x DP 1.2 | 4x DP 1.2 |
| Computer Keyboard/Mouse Ports | USB Type-B | | | |
| Physical | | | | |
| Dimensions* | 12.5 (W) x 1.7 (H) x 6.2 (L) in. / 317.5 (W) x 43.2 (H) x 162.6 (L) mm | 12.5 (W) x 1.7 (H) x 6.2 (L) in. / 317.5 (W) x 43.2 (H) x 162.6 (L) mm | 12.5 (W) x 1.7 (H) x 6.2 (L) in. / 317.5 (W) x 43.2 (H) x 162.6 (L) mm | 12.5 (W) x 3.6 (H) x 6.2 (L) in. / 317.5 (W) x 91.4 (H) x 162.6 (L) mm |
| Weight* | 3.9 lbs. (1.77kg.) | 4.85 lbs. (2.2kg.) | 3.9 lbs. (1.77kg.) | 4.85 lbs. (2.2kg.) |
| Power | | | | |
| Power Requirements | 12V 2.5A DC Power Supply | | | |
| AC Input | 100 to 240VAC | | | |
| Power Type | Worldwide with interchangeable mains connectors for NA, EU, UK, ANZ included 5mm DIN connector. | | | |
| Environmental | | | | |
| Operating Temperature | 32° to 104° F (0° to 40° C) | | | |
| Storage Temperature | -4° to 140° F (-20° to 60° C) | | | |
| Humidity Storage and Use | 0-80% RH, non-condensing | | | |
| Certification | | | | |
| Security Accreditation | NIAP Protection Profile PSD Ver. 4.0, Audio Input v 1.0. Keyboard/Mouse v 1.0. Video/Display v 1.0. TEMPEST variants available via an SDIP-55 NATO accredited TEMPEST test facility. | | | |
| Regulatory Compliance | FCC Class A, UL, CE, RoHS, ICES, RCM, UKCA | | | |
| General Information | | | | |
| Made In | Designed in California. Assembled in US with US-based technical support (TAA compliant). | | | |
| Product Life Cycle | 5 years | | | |
| Warranty | 3 years standard (upgradeable to 4 or 5 years) | | | |
| Enclosure | Heavy-duty aluminum enclosure with metal faceplate. | | | |
| Optional Adapter | 0401-00853 Power Adapter Kit, 12V/2.5A | | | |
| SKVM Monitor or Video-Only Cables | | | | |
| DP to DP | F1DN1VCBL-PP6t TAA DP/DP Video Cable, DP M/M; 6 ft. (1.8m) F1DN1VCBL-PP10t TAA DP/DP Video Cable, DP M/M; 10 ft. (3m) | | | |

*KVM only

Accessories

| Part Number | Description |
|-----------------|--|
| 0401-00853 | Power Adapter Kit, 2.5A |
| FIDN-KVM-MOUNT | Under-Desk Mount |
| FIDN-WSMOUNT | Work Surface and Cubicle Mount for SKVM/SKM |
| FIDN008KBD | 2-4-8 Port SKVM Remote Control w/Integrated Keyboard |
| FIDN-KVM-EXTC6 | Extender Transmitter Copper CAT6 - Universal Video (4K 60Hz 4:2:0) |
| FIDN-KVM-EXRC6 | Extender Receiver Copper CAT6 - Universal Video (4K 60Hz 4:2:0) |
| FIDN-KVM-EXTC6X | Extender Transmitter Copper CAT6 - Universal Video (4K 60Hz 4:4:4) |
| FIDN-KVM-EXRC6X | Extender Receiver Copper CAT6 - Universal Video (4K 60Hz 4:4:4) |
| FIDN-KVM-EXTFI | Extender Transmitter Fiber SFP - Universal Video (4K 60Hz 4:2:0) |
| FIDN-KVM-EXRFI | Extender Receiver Fiber SFP - Universal Video (4K 60Hz 4:2:0) |

Learn more about Belkin cybersecurity solutions.



Download electronic copy.

