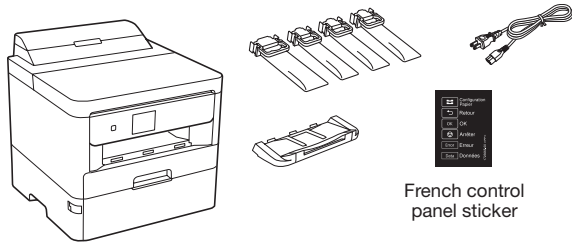


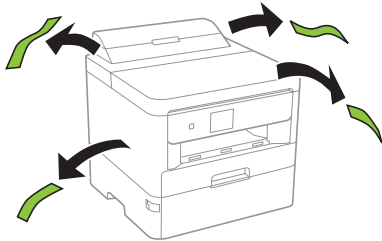
# WF-C529R Start Here

**IMPORTANT:** Before using this product, make sure you read these instructions and the safety instructions in the online *User's Guide*.

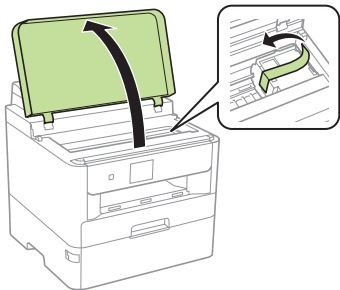
## 1 Unpack



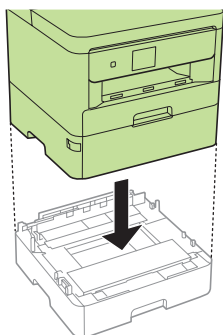
- 1 Remove all protective materials from the product.



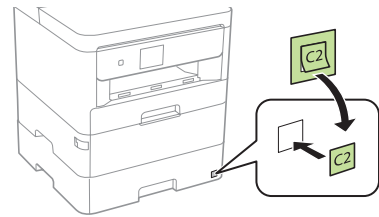
- 2 Lift up the printer cover and remove all protective materials from inside the product, then close the printer cover.



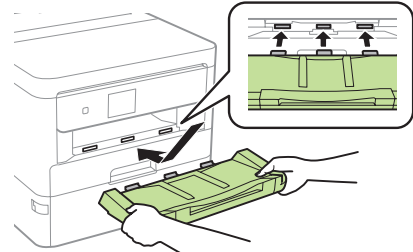
- 3 Place the product on the included paper cassette unit as shown.



- 4 Attach the included sticker.

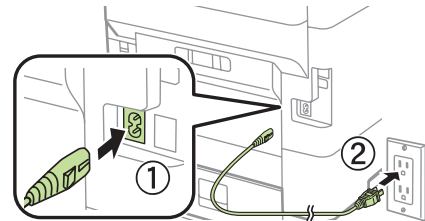


- 5 Insert the output tray, then set it down gently.



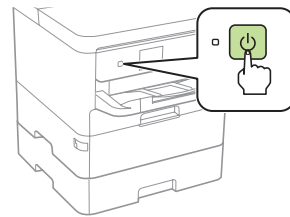
## 2 Turn on and configure

- 1 Connect the power cord to the back of the product and to an electrical outlet.



**Caution:** Do not connect to your computer yet.

- 2 Turn on the product.



- 3 Select your language and time on the LCD screen.

**Note:** You can change these settings later using the product's control panel. For more information, see the online *User's Guide*.

## 3 Install ink supply units (ink packs)

**Note:**

- The product is designed for use with Epson ink packs only, not third-party ink.
- The ink packs included with the product are designed for product setup and not for resale.
- After some ink is used for charging, the rest is available for printing.

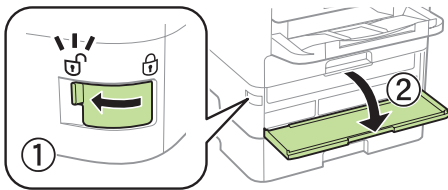
**Caution:** Keep the ink packs out of the reach of children and do not drink the ink.



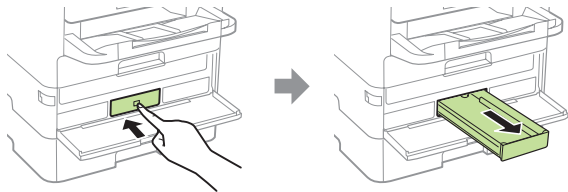
\*413640800\*

**EPSON**  
EXCEED YOUR VISION

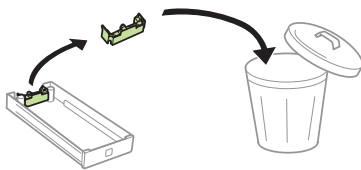
1 Unlock and open the ink pack tray cover.



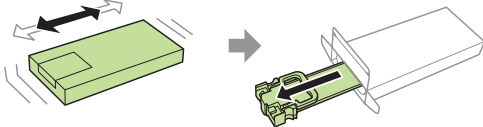
2 Press an ink pack tray to release it, then pull the tray out.



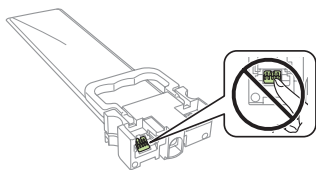
3 Remove and discard the protective piece from the ink pack tray.



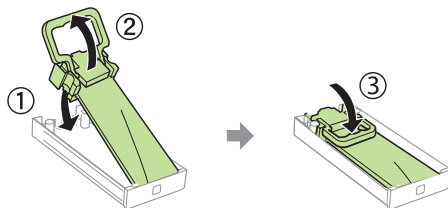
4 Shake an ink pack 10 times, then remove it from the packaging.



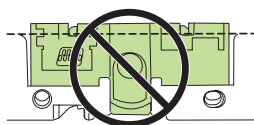
**Note:** Do not touch the green chip on the ink pack.



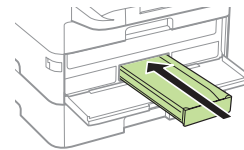
5 Place the ink pack into the ink pack tray, move the handle forward, then move the handle back to its original position.



**Note:** Make sure the ink pack is fully inserted and level with the top of the ink pack tray.

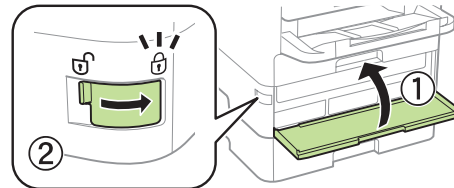


6 Insert the ink pack tray into the printer. Repeat steps 2 to 6 for the other ink packs.



**Note:** The ink packs are keyed to fit into the correct color slot. If you cannot insert the ink pack tray all the way, do not force it. Make sure the ink pack color matches the color slot on the printer.

7 Close the ink pack tray cover and lock it.



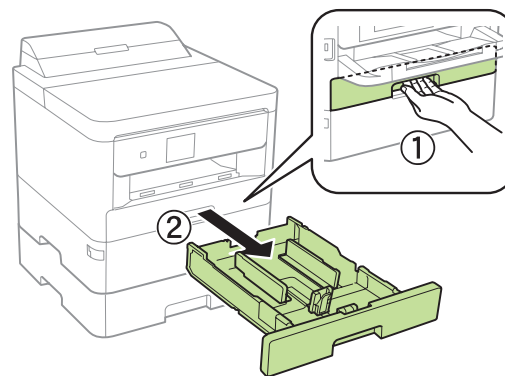
8 Select **Installed** on the LCD screen to start charging the ink. Ink charging takes approximately 9 minutes. A message appears when ink charging is complete.

**Caution:** Don't turn off the product, raise the printer cover, or open the front cover while the product is charging or you'll waste ink.

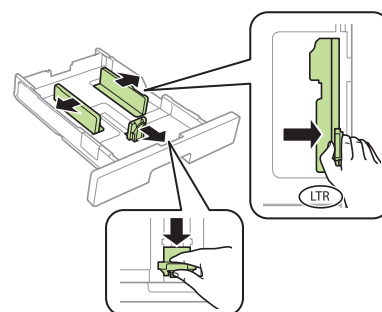
## 4 Load paper

For instructions on loading envelopes or legal-size paper, or using the rear paper feed slot, see the online *User's Guide*.

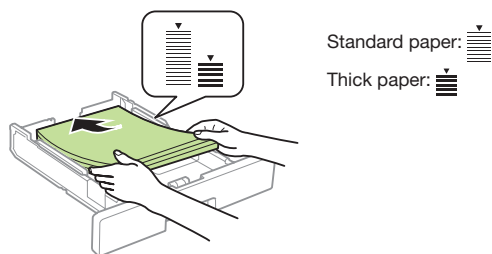
1 Make sure the product is done charging the ink, then pull out one of the paper cassettes.



2 Slide the side edge guides all the way out and set the front edge guide to the paper size you are using.

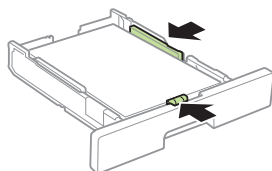


- 3 Insert paper with the glossy or printable side down.

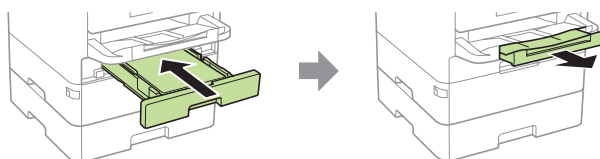


**Note:** Make sure the paper is under the arrow mark for your paper type and loaded against the front edge of the cassette.

- 4 Slide the edge guides against the paper, but not too tightly.



- 5 Keep the cassette flat as you insert it all the way, then pull out the output tray extension.



- 6 Select the paper settings on the product's control panel.

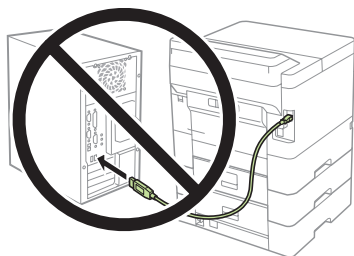
## 5 Install software

**Note:** An Internet connection is required to obtain the product software.

To print from a Chromebook™, go to [www.epson.com/support/gcp](http://www.epson.com/support/gcp) (U.S.) or [www.epson.ca/support/gcp](http://www.epson.ca/support/gcp) (Canada) for instructions.

### Standard software package

- 1 Make sure the product is **NOT CONNECTED** to your computer.



**Windows®:** If you see a Found New Hardware screen, click **Cancel** and disconnect the USB cable.

- 2 Download and run your product's software package:

[www.epson.com/support/wfc529r](http://www.epson.com/support/wfc529r) (U.S.)  
[www.epson.ca/support/wfc529r](http://www.epson.ca/support/wfc529r) (Canada)

- 3 Follow the instructions on the computer screen to run the setup program.

- 4 When you see the Select Your Connection screen, select one of the following and follow the on-screen instructions:

- **Wireless connection**  
In most cases, the software installer automatically attempts to set up your wireless connection. If setup is unsuccessful, you may need to enter your network name (SSID) and password.
- **Direct USB connection**  
Make sure you have a USB cable (not included).
- **Wired network connection**  
Make sure you have an Ethernet cable (not included).

### PCL or PostScript driver

Download the software and see your online *User's Guide* for instructions.

[www.epson.com/support/wfc529r](http://www.epson.com/support/wfc529r) (U.S.)  
[www.epson.ca/support/wfc529r](http://www.epson.ca/support/wfc529r) (Canada)

## Mobile printing

Connect wirelessly from your smartphone, tablet, or computer. Print documents and photos from across the room or around the world:

- Print directly from your iOS device. Simply connect your printer and device to the same network and tap the action icon to select the print option.
- Use Epson Print Enabler (free from Google Play™) with Android™ devices (v4.4 or later). Then connect your printer and device to the same network and tap the menu icon to select the print option.
- Print remotely with Epson Connect™ and Google Cloud Print™. See your online *User's Guide* for instructions or learn more at [www.epson.com/connect](http://www.epson.com/connect) (U.S.) or [www.epson.ca/connect](http://www.epson.ca/connect) (Canada).

## Any problems?

### Network setup was unsuccessful.

- Make sure you select the right network name (SSID).
- Restart your router (turn it off and then on), then try to connect to it again.
- The printer can only connect to a network that supports 2.4 GHz connections. If your router offers both 2.4 GHz and 5 GHz connections, make sure 2.4 GHz is enabled.
- If you see a firewall alert message, click **Unblock** or **Allow** to let setup continue.
- If your network has security enabled, make sure you enter your network password (WEP key or WPA passphrase) correctly. Be sure to enter your password in the correct case.

### There are lines or incorrect colors in my printouts.

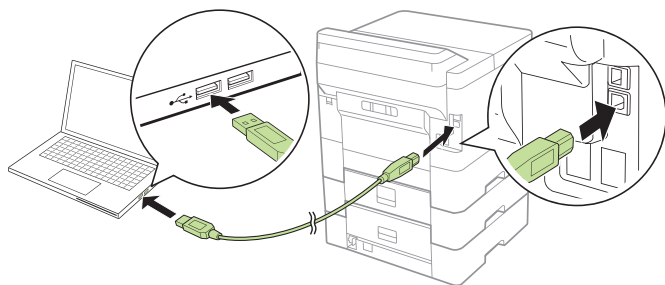
Run a nozzle check to see if there are any gaps in the printout. Then clean the print head, if necessary. See the online *User's Guide* for more information.

### The product's screen is dark.

Make sure your product is turned on, and touch the screen or press any button to wake it from sleep mode.

### Setup is unable to find my printer after connecting it with a USB cable.

Make sure your product is securely connected as shown:



## Any questions?

### User's Guide

**Windows:** Click the icon on your desktop or Apps screen to access the online *User's Guide*.

**Mac:** Click the icon in **Applications/Epson Software/Guide** to access the online *User's Guide*.

If you don't have a User's Guide icon, go to the Epson website, as described below.

### Support

Visit [www.epson.com/support/wfc529r](http://www.epson.com/support/wfc529r) (U.S.) or [www.epson.ca/support/wfc529r](http://www.epson.ca/support/wfc529r) (Canada) to download drivers, view manuals, get FAQs, or contact Epson.

Call (562) 276-7202 (U.S.) or (905) 709-2567 (Canada), 6 AM to 8 PM, Pacific Time, Monday through Friday, and 7 AM to 4 PM, Pacific Time, Saturday. Days and hours of support are subject to change without notice. Toll or long distance charges may apply.

### Recycling

Epson offers a recycling program for end of life hardware and ink packs. Please go to [www.epson.com/recycle](http://www.epson.com/recycle) (U.S.) or [www.epson.ca/recycle](http://www.epson.ca/recycle) (Canada) for information on how to return your products for proper disposal.

## Need paper and ink?

Ensure brilliant results with Epson specialty papers, engineered specifically for Epson printers. Find specialty papers and Epson Genuine Ink at [www.epson.com](http://www.epson.com) (U.S. sales) or [www.epson.ca](http://www.epson.ca) (Canadian sales) and at Epson authorized resellers. Call 800-GO-EPSON (800-463-7766).



DESIGNED *for* EXCELLENCE™

Epson printers, ink and specialty papers.

### WF-C529R replacement ink packs

| Color   | Standard-capacity | High-capacity |
|---------|-------------------|---------------|
| Black   | T01C              | T01D          |
| Cyan    | T01C              | T01D          |
| Magenta | T01C              | T01D          |
| Yellow  | T01C              | T01D          |

DURABrite  
Ultra  
INK



EPSON and DURABrite are registered trademarks, EPSON Exceed Your Vision is a registered logomark, and Epson Connect is a trademark of Seiko Epson Corporation.

Designed for Excellence is a trademark of Epson America, Inc.

Mac is a trademark of Apple Inc., registered in the U.S. and other countries.

Android, Google Cloud Print, Chromebook, and Google Play are trademarks of Google LLC.

General Notice: Other product names used herein are for identification purposes only and may be trademarks of their respective owners. Epson disclaims any and all rights in those marks.

This information is subject to change without notice.

© 2018 Epson America, Inc., 5/18

CPD-55866