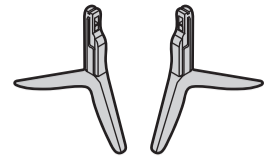
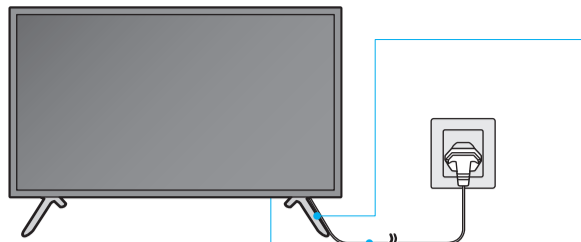


**SAMSUNG**

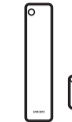
# Unpacking and Installation Guide



Power Cable



Holder-Cable



Remote Control / Battery (AAA) x2



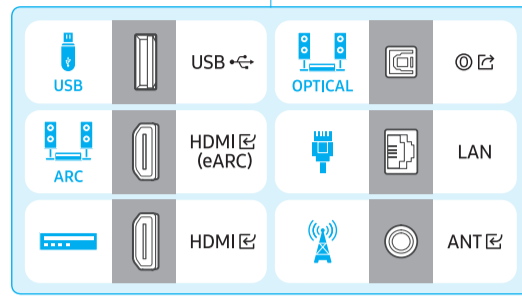
User Manual / Regulatory Guide



Scan this QR code with your smart phone to see helpful videos.



BN68-15740A-01



**1**

**43"-50"**

**58"-75"**

**55"**

**85"**

**2**

**43"-75"**

**85"**

**3**

**1**

**2**

**L**

**R**

**1**

**2**

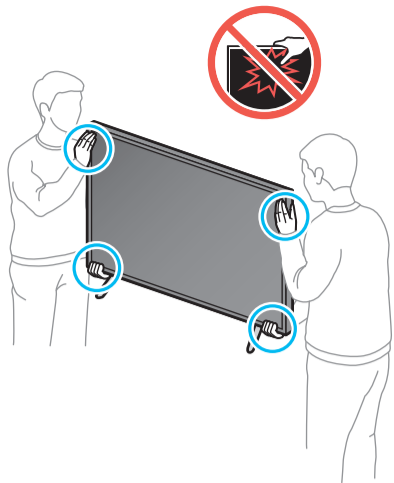
**L**

**R**

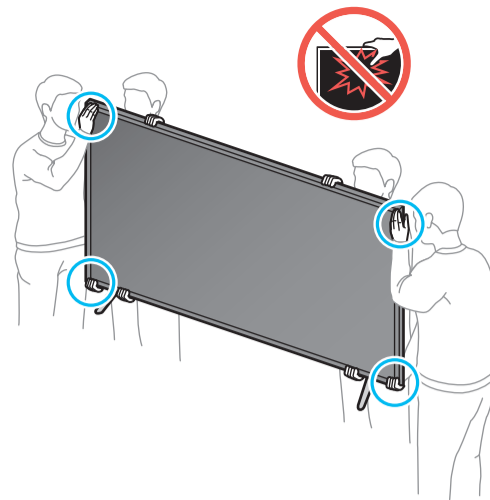
**85"**

4

43"-75"

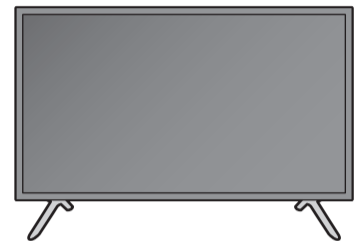
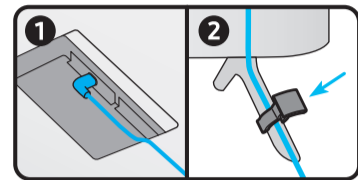
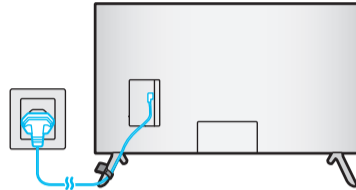
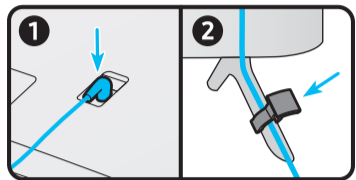
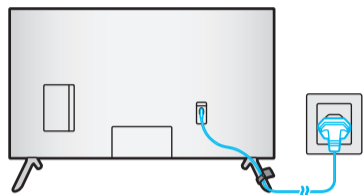


85"

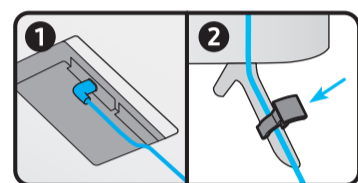
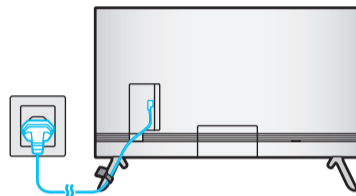
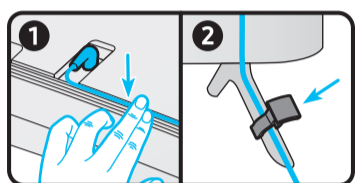
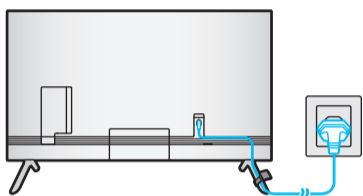


5

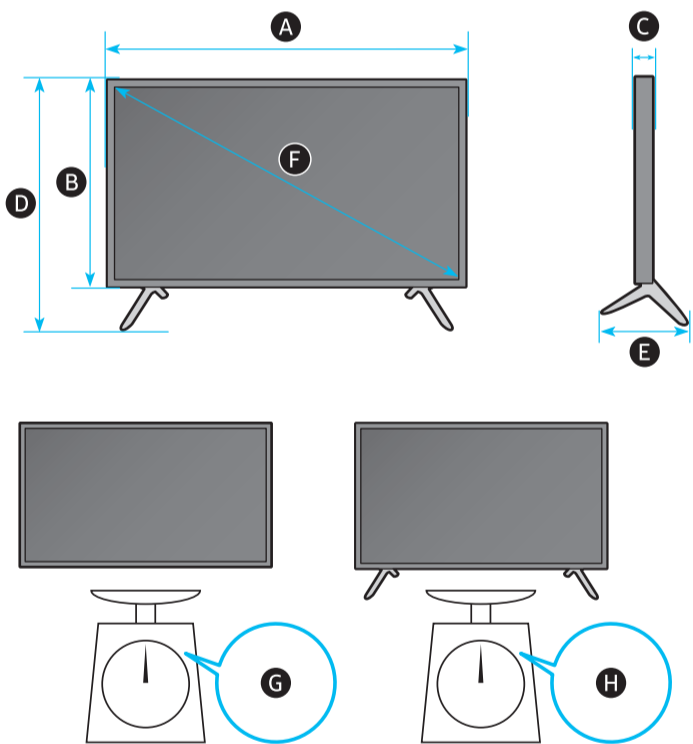
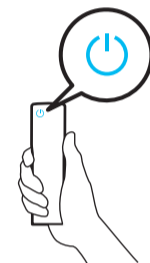
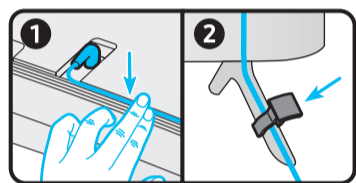
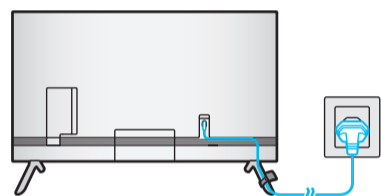
43"



50"-65"

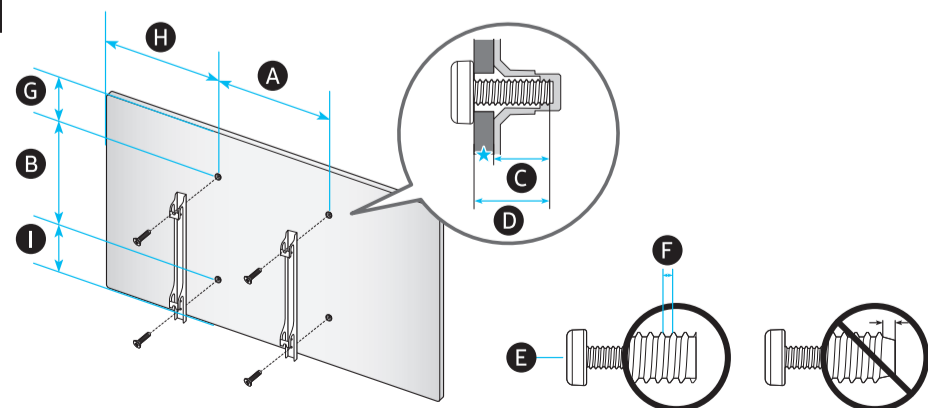


70"-85"



	A	B	C	D	E	F	G	H
43CU7***	37.9 inches (963.9 mm)	22.0 inches (558.9 mm)	2.3 inches (59.6 mm)	24.7 inches (627.8 mm)	7.6 inches (192.5 mm)	42.5 inches	179 lbs (8.1 kg)	18.3 lbs (8.3 kg)
50CU7***	44.0 inches (1116.8 mm)	25.4 inches (644.2 mm)	2.4 inches (59.9 mm)	28.3 inches (719.1 mm)	9.9 inches (250.2 mm)	49.5 inches	25.1 lbs (11.4 kg)	25.6 lbs (11.6 kg)
55CU7***	48.4 inches (1230.5 mm)	27.8 inches (707.2 mm)	2.4 inches (59.9 mm)	30.8 inches (783.3 mm)	9.9 inches (250.2 mm)	54.6 inches	30.6 lbs (13.9 kg)	31.3 lbs (14.2 kg)
58CU7***	50.8 inches (1291.0 mm)	29.5 inches (748.6 mm)	2.4 inches (59.9 mm)	32.5 inches (824.3 mm)	9.9 inches (250.2 mm)	57.5 inches	33.5 lbs (15.2 kg)	34.0 lbs (15.4 kg)
65CU7***	57.1 inches (1449.4 mm)	32.7 inches (830.3 mm)	2.4 inches (59.9 mm)	35.7 inches (906.6 mm)	11.1 inches (282.1 mm)	64.5 inches	45.4 lbs (20.6 kg)	46.1 lbs (20.9 kg)
70CU7***	61.3 inches (1556.2 mm)	35.4 inches (899.3 mm)	2.4 inches (61.6 mm)	38.4 inches (976.2 mm)	13.4 inches (339.9 mm)	69.5 inches	54.7 lbs (24.8 kg)	55.8 lbs (25.3 kg)
75CU7***	65.9 inches (1673.2 mm)	37.7 inches (958.2 mm)	2.4 inches (59.9 mm)	41.3 inches (1047.9 mm)	13.4 inches (341.1 mm)	74.5 inches	67.0 lbs (30.4 kg)	68.0 lbs (30.8 kg)
85CU7***	74.6 inches (1895.9 mm)	42.7 inches (1083.9 mm)	2.4 inches (60.9 mm)	46.7 inches (1186.7 mm)	15.4 inches (392.2 mm)	84.5 inches	88.6 lbs (40.2 kg)	91.1 lbs (41.3 kg)

\*: 0-9, A-Z



	VESA A x B (mm)	C (mm)	D	E x 4	F (mm)	G (inches)	H (inches)	I (inches)
43CU7***	200 x 200	20-22	C + ★	M8	1.25	3.6	14.9	10.3
50CU7***						5.9	17.9	11.5
55CU7***						8.1	20.2	11.8
58CU7***	400 x 300	20-22	C + ★	M8	1.25	5.6	17.4	11.8
65CU7***						8.9	20.6	11.9
70CU7***						11.2	22.7	12.3
75CU7***	400 x 400	20-22	C + ★	M8	1.25	9.1	25.0	12.8
85CU7***	600 x 400					9.8	25.5	16.9

\*: 0-9, A-Z

★: Wall-Mount Bracket