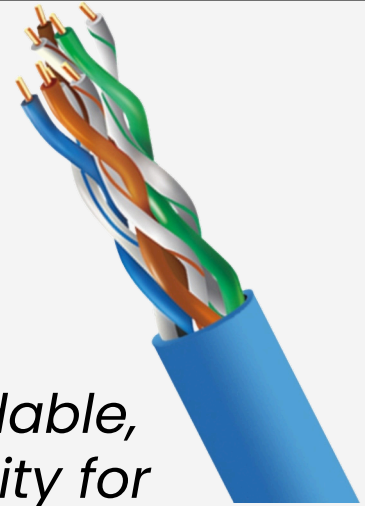




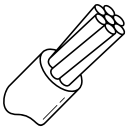

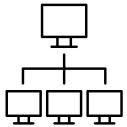
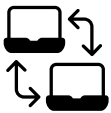
4XEM™ Product Data Sheet

250ft CAT6 Pure Copper Riser Bulk Cable - Blue

Expertly engineered to deliver dependable, high-performance network connectivity for consistent signal integrity and long-term reliability.



Key Features

-  Pull box packaging
-  Connector free 250ft cable
-  Solid core - Pure Copper
-  Riser rated for installs
-  Perfect for LAN, Ethernet, and VoIP
-  10Gbps up to 55m Max Data Rate

Technical Highlights

SKU Name	4XCAT6250RBL
Warranty	Lifetime
Cable Rating	Category 6 - 250 MHz
Standard Compliance	ANSI/TIA-568.2-E ISO/IEC 11801 RoHS + Reach Compliant UL listed CMR

Application(s)

Designed for offices, schools, and data networks, this cable provides a reliable foundation for Ethernet connectivity and structured cabling systems.

Visit 4XEM.com

Contact Brandon Hegarty 4XEM Sales Manager
1-866-999-4936 ext.113 bhegarty@4xem.com

4XEM™ *Product Data Sheet*

Technical Specifications

Warranty Information	Warranty	Lifetime
Performance	Cable Rating Standard Compliance	CAT6 - 250 MHz "ANSI/TIA-568.2-E ISO/IEC 11801 RoHS + Reach Compliant UL listed CMR"
	PoE Support	Supports PoE up to 100W
Hardware	Cable Jacket Material	PVC (Polyvinyl Chloride)
	Fire Rating	CMR (Riser Rated, suitable for vertical runs in riser shafts)
	Max Data Rate	10 Gbps (10GBASE-T) up to 55 m, 1 Gbps up to 100 m per network channel
	Max transmission distance	Extend 550 MHz
Physical Characteristics	Color	Blue
	Conductor Material	Pure Copper (99.99% non-oxygen copper)
	Conductor Core	Solid
	Wire Gauge	23 AWG
	Shielded	No
	Bed Radius	≥13.5
	Cable OD	0.22 in [5.8 mm]
	Cable Length	250 ft [76.2 m]
Weight of Product	2.86 lbs [2.92 kg]	
Packaging Information	Package Height	10.2 in [260 mm]
	Package Width	7.9 in [200 mm]
	Package Length	10.2 in [260 mm]
	Shipping (Package) Weight	4.86 lbs [3.75 kg]
What's in the Box	Included in Package	250 ft Roll of Blue C6 Pure Copper Riser Bulk Cable

Notes

- * Product appearance and specifications are subject to change without notice.
- * Weights and measurements are approximate.