

Philips
UltraWide LCD monitor

E Line

34" (86.36 cm)
3440 x 1440 (WQHD)

346E2CUAE



Simplify your connections with USB-C

The Philips E line curved UltraWide display offers expansive panoramic visuals. A WQHD display with an ergonomic stand make for optimal viewing conditions. All-in-one USB-C, built-in USB Hub and MultiView meet the need for productivity.

Single cable USB-C connection

- Connect your notebook with one USB-C cable
- Power and re-charge compatible notebook from the monitor

Superb Picture Quality

- CrystalClear images with UltraWide QHD 3440 x 1440 pixels
- VA display delivers awesome images with wide viewing angles

Good for Gaming

- 1 ms (MPRT) fast response for crisp images and smooth gameplay

Features designed for you

- Less eye fatigue with Flicker-Free technology
- LowBlue Mode for easy-on-the-eyes productivity
- MultiView enables simultaneous dual connect and view
- Cable management reduces cable clutter for a neat workspace
- Tilt and height-adjust for an ideal viewing position

PHILIPS

UltraWide LCD monitor
E Line 34" (86.36 cm), 3440 x 1440 (WQHD)

346E2CUAE/00

Highlights

USB-C connection

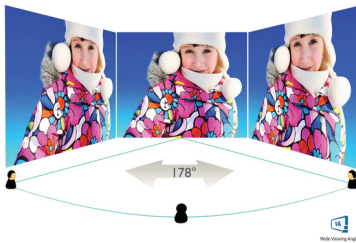


This Philips display features a USB type-C connector with power delivery. With intelligent and flexible power management, you can power charge your compatible device directly. Its slim, reversible USB-C allows for easy, one-cable connection. You can watch high-resolution video while powering up and recharging your compatible device at the same time.

Power and re-charge notebook

This monitor features a built-in USB-C connector that meets USB Power Delivery standard. With intelligent and flexible power management, you can now power up and/or re-charge your compatible* Notebook directly from the Monitor using a single USB-C cable.

VA display



The Philips VA LED display uses an advanced multi-domain vertical alignment technology that gives you super-high static contrast ratios for extra-vivid and bright images. While standard office applications are handled with ease, it is especially suitable for photos, web browsing, films, gaming and demanding graphical applications. Its optimised pixel

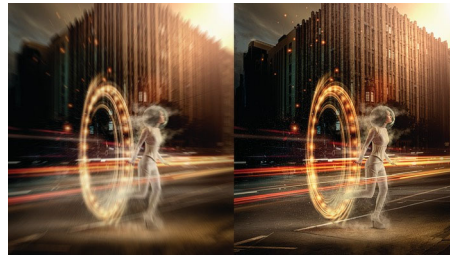
management technology gives you a 178/178 degree extra-wide viewing angle, resulting in crisp images.

UltraWide CrystalClear images



These Philips screens deliver Crystal Clear, UltraWide Quad HD 3440 x 1440 pixel images. Utilising high-performance panels with high-density pixel count and 178/178 wide viewing angles, these new displays will make your images and graphics come alive. The UltraWide 21:9 format enables more productivity with more room for side-by-side comparisons and more viewable spreadsheet columns. Whether you are a demanding professional requiring extremely detailed information for CAD-CAM solutions or a financial wizard working on huge spreadsheets, Philips displays deliver Crystal Clear images.

1 ms MPRT fast response



MPRT (motion picture response time) is a more intuitive way to describe response time, which directly refers to the duration between seeing blurry noise and clean, crisp images. The Philips gaming monitor with 1 ms MPRT effectively eliminates smearing and motion blur and delivers sharper and more precise visuals

to enhance your gaming experience. The best choice for playing thrilling and twitch-sensitive games.

Flicker-Free technology



Due to the way brightness is controlled on LED-backlit screens, some users experience flicker on their screen which causes eye fatigue. Philips Flicker-Free technology applies a new solution to regulate brightness and reduce flicker for more comfortable viewing.

LowBlue Mode



Studies have shown that just as ultra-violet rays can cause eye damage, shortwave-length blue light rays from LED displays can cause eye damage and affect vision over time. Developed for wellbeing, the Philips LowBlue Mode setting uses a smart software technology to reduce harmful shortwave blue light.

MultiView technology

With the ultra-high resolution Philips MultiView display, you can now experience a world of connectivity. MultiView enables active dual connect and view so that you can work with multiple devices like a PC and notebook simultaneously, for complex multitasking.



USB-C



←21:9→
Curved
UltraWide



VA
Wide Viewing
Angle



WQHD



Fast Response
1 ms MPRT



Flicker-free



LowBlue Mode



MultiView



HDMI™
HIGH DEFINITION MULTIMEDIA INTERFACE

Specifications

Picture/Display

- LCD panel type: VA LCD
- Backlight type: W-LED system
- Panel Size: 34 inch / 86.36 cm
- Display Screen Coating: Anti-Glare, 3H, Haze 25%
- Effective viewing area: 797.22 (H) x 333.72 (V) mm - at a 1500R curvature*
- Aspect ratio: 21:9
- Maximum resolution: 3440 x 1440 @ 100 Hz*
- Pixel Density: 110 PPI
- Response time (typical): 4 ms (Grey to Grey)*
- MPRT: 1 ms
- Brightness: 300 cd/m²
- Contrast ratio (typical): 3000:1
- SmartContrast: Mega Infinity DCR
- Pixel pitch: 0.23175 x 0.23175 mm
- Viewing angle: 178° (H)/178° (V), @ C/R > 10
- Flicker-free
- Picture enhancement: SmartImage game
- Colour gamut (typical): NTSC 99.5%*, sRGB 121.3%*
- Display colours: 16.7 M
- Scanning Frequency: 30 - 160 kHz (H) / 48 - 120 Hz (V)
- LowBlue Mode
- EasyRead
- sRGB
- Adaptive sync

Connectivity

- Signal Input: DisplayPort x 1, HDMI x 1, USB-C x 1
- Sync Input: Separate Sync
- Audio (In/Out): Audio out

USB

- USB Ports: USB-C x 1 (DisplayPort Alt mode), USB-B x 1 (upstream), USB-A: USB 3.2 x 4 (downstream with 1 fast charger B.C. 1.2, USB 3.2 Gen 1, 5 Gbps)
- Power delivery: USB-C: USB PD version 3.0 up to 65 W (5 V/3 A, 7 V/3 A, 9 V/3 A, 10 V/3 A, 12 V/3 A, 15 V/3 A, 20 V/3.25 A); USB-A (side): x 1 fast charge B.C 1.2 up to 7.5 W (5 V/1.5 A)

Convenience

- Built-in Speakers: 5 W x 2
- MultiView: PIP/PBP mode, 2 x devices
- User convenience: Power On/Off, Menu, Volume, Input, SmartImage Game
- OSD Languages: Brazil Portuguese, Czech, Dutch, English, Finnish, French, German, Greek, Hungarian, Italian, Japanese, Korean, Polish, Portuguese, Russian, Simplified Chinese, Spanish, Swedish, Traditional Chinese, Turkish, Ukrainian
- Other convenience: Kensington lock, VESA mount

(100 x 100 mm)

- Plug and Play Compatibility: DDC/CI, Mac OS X, sRGB, Windows 10 / 8.1 / 8 / 7

Stand

- Height adjustment: 100 mm
- Tilt: -5/20 degree

Power

- On mode: 31.81 W (typ.) (EnergyStar test method)
- Standby mode: 0.5 W (typ.)
- Off mode: 0.3 W (typ.)
- Energy Label Class: A
- Power LED indicator: Operation - White, Standby mode - White (flashing)
- Power supply: Internal, 100–240 VAC, 50–60 Hz

Dimensions

- Product with stand (max height): 807 x 495 x 257 mm
- Product without stand (mm): 807 x 367 x 110 mm
- Packaging in mm (W x H x D): 980 x 500 x 224 mm

Weight

- Product with stand (kg): 10.05 kg
- Product without stand (kg): 7.83 kg
- Product with packaging (kg): 13.06 kg

Operating conditions

- Temperature range (operation): 0 to 40 °C
- Temperature range (storage): -20 to 60 °C
- Relative humidity: 20%-80 %
- Altitude: Operation: +12,000 ft (3658 m), Non-operation: +40,000 ft (12,192 m)
- MTBF: 50,000 hrs (excluding backlight) hour(s)

Sustainability

- Environmental and energy: EnergyStar 8.0, TCO Certified, RoHS, Lead-free, Mercury Free
- Recyclable packaging material: 100 %

Compliance and standards

- Regulatory Approvals: EPA, cETLus, CB, TUV/GS, TUV Ergo, CU-EAC, EAEU RoHS, CE Mark, FCC Class B, ICES-003, UKRAINIAN

Cabinet

- Colour: Black
- Finish: Textured

What's in the box?

- Monitor with stand
- Cables: USB-C to USB-C cable, Power cable
- User Documentation



Issue date 2020-11-06

Version: 2.0.1

12 NC: 8670 001 70033
EAN: 87 12581 77066 2

© 2020 Koninklijke Philips N.V.
All Rights reserved.

Specifications are subject to change without notice.
Trademarks are the property of Koninklijke Philips N.V.
or their respective owners.

www.philips.com

* Response time value equal to SmartResponse

* The maximum resolution works for either HDMI, DP or USB-C input.

* NTSC Area based on CIE 1976

* sRGB Area based on CIE 1931

* For USB-C power and charging function, your Notebook/device must support USB-C standard Power Delivery specifications. Please check with your Notebook user manual or manufacturer for more details.

* For Video transmission via USB-C, your Notebook/device must support USB-C DP Alt mode

* The monitor may look different from feature images.