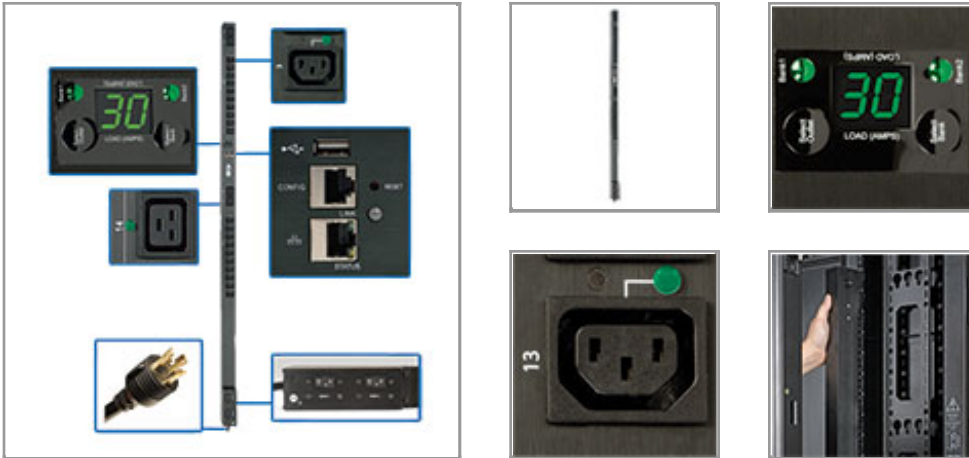


5/5.8kW Single-Phase Switched PDU, Outlet Monitoring, 208/240V Outlets (20 C13 & 4 C19), 0U, LX Platform Interface, TAA

MODEL NUMBER: PDUMVR30HVNELX



Highlights

- 5/5.8kW 208/240V 30A switched PDU
- 24 switched outlets—20 C13, 4 C19
- Ethernet network interface for remote outlet access 24/7
- Digital meter for load monitoring in real time
- Monitors power consumption of individual outlets

Package Includes

- PDUMVR30HVNELX 5/5.8kW Single-Phase Switched PDU
- Configuration cable
- (24) Cable ties
- Rack-mounting hardware
- Owner's manual

Description

The PDUMVR30HVNELX 5/5.8kW Single-Phase Switched PDU provides advanced network control and remote power monitoring with the ability to turn on, turn off, reboot or lock out power to each outlet. Recommended for any IT or industrial application, it features 24 switched outlets (20 C13 and 4 C19). LEDs indicate each outlet's on/off power status, and you can monitor each outlet's power consumption remotely or via digital display. A 10-foot cord with NEMA L6-30P plug connects the PDU to a compatible AC power source, generator or protected UPS.

The built-in Java-free HTML5-based LX Platform interface enables full remote access for power monitoring, configuration, control and email notifications via secure web browser, SNMP, telnet or SSH. It supports 10/100 Mbps auto-sensing for optimum communication with an Ethernet network. Optional EnviroSense2 modules (sold separately) provide a variety of environmental monitoring capabilities. Protocols supported include HTTP, HTTPS, SMTP, SNMPv1, SNMPv2, SNMPv3, telnet, SSH, FTP, DHCP and NTP.

A digital LED meter allows you to monitor each bank's load in real time to ensure the PDUMVR30HVNELX is used at maximum capacity with no danger of overload. The PDU mounts in 0U of space in EIA-standard 19-inch racks using the included toolless mounting buttons or the included rack-mounting brackets. Use the included [PDUMVROTATEBRKT](#) kit to install the unit with outlets facing the rear for better airflow or equipment access.

Features

Distributes Network-Grade Single-Phase Power

- 5/5.8kW 208/240V 30A switched PDU with single-phase input/output
- Recommended for network applications requiring individual outlet control, load shedding and remote monitoring of critical network components
- NEMA L6-30P with 10 ft. cord connects to compatible AC power source

24 Switched Outlets Distribute AC Power

- 20 C13 and 4 C19 outlets split into 2 separate load banks
- Outlets can be remotely controlled to power up, power down, reboot or lock out unresponsive devices
- Front-panel LEDs indicate outlets' power status

- Current monitoring provides 1% billing grade accuracy

Digital Load Meter

- Reports load levels for each bank, both banks combined and each outlet
- Supports IP-address self-ID
- Rotates 180° for easy reading at all angles

Outlet-Level Current Monitoring

- Monitors power consumption for each individual outlet remotely or via digital display
- Tracks current power usage trends per device or input cord

Advanced Network Monitoring

- Built-in LX Platform interface allows full remote access for power monitoring, configuration, control and email notifications via secure web browser, SNMP, telnet or SSH
- No Java required
- Automated alerts help prevent accidental overloads, power loss and downtime
- Optional EnviroSense2 modules (sold separately) provide a variety of environmental monitoring capabilities

Broad Communications Compatibility

- Supports HTTP, HTTPS, PowerAlert, SMTP, SNMPv1, SNMPv2, SNMPv3, telnet, SSH, FTP, DHCP and NTP
- Supports automatic and manual assignment of IP address

Easy 0U Installation in EIA-Standard 19 in. Racks

- Mounts vertically using included toolless buttons or rack-mounting brackets
- Included [PDUMVROTATEBRKT](#) allows mounting with rear-facing outlets
- Cord retention bracket enables convenient cable organization and reduces clutter

TAA-Compliant

- Compliant with the Federal Trade Agreements Act (TAA) for GSA Schedule purchases

Specifications

OVERVIEW	
PDU Type	Switched
OUTPUT	
Output Capacity Details	5.8kW (240V), 5kW (208V), 4.8kW (200V) total capacity / 30A max (Agency de-rated to 24A), 20A max per breakered outlet bank; 16A max per C19 outlet; 12A max per C13 outlet
Frequency Compatibility	50 / 60 Hz
Output Receptacles	(20) C13; (4) C19
Output Nominal Voltage	200; 208; 240
Overload Protection	Two 20A breakers protect 12 outlets each



Customized Load Management Receptacles	Each outlet is individually controllable via remote interface
INPUT	
PDU Input Voltage	200; 208; 240
Recommended Electrical Service	30A 208/240V
Maximum Input Amps	30
Maximum Input Amps Details	Agency de-rated to 24A continuous
PDU Plug Type	NEMA L6-30P
Input Cord Length (ft.)	10
Input Cord Length (m)	3.05
Input Phase	Single-Phase
USER INTERFACE, ALERTS & CONTROLS	
Front Panel LCD Display	Digital display reports load level in amps for LOAD BANK 1 (Outlets 1-12), LOAD BANK 2 (Outlets 13-24), LOAD BANKS 1&2 COMBINED (Outlets 1-24) and each individual output receptacle; Digital display can also be used to scroll the configured IP address
Front Panel LEDs	BANK 1 and BANK 2 LEDs verify which load bank the digital current display is reporting (Bank 1, Bank 2 or Banks 1&2 Combined); BANK 1 or BANK 2 LED will flash when the digital display is reporting output current for one of the outlets in that load bank; 24 additional LEDs, one near each output receptacle, will light continuously to verify power on/off status and flash to indicate that the digital display is reporting output current for just that individual receptacle
Switches	SELECT OUTLET and SELECT BANK switches advance the LCD screen and associated LED to display power consumption for individual output receptacles and output load banks; Press and hold the SELECT BANK button for 4 seconds to rotate the digital display 90 degrees for overhead power input; Press and hold the SELECT OUTLET button for 4 seconds to scroll the configured IP address
PHYSICAL	
Shipping Dimensions (hwd / in.)	4.5 x 6.1 x 75.8
Shipping Dimensions (hwd / cm)	11.4 x 15.5 x 192.5
Shipping Weight (lbs.)	16
Shipping Weight (kg)	7.3
Unit Dimensions (hwd / in.)	70 x 2.2 x 2.6
Unit Dimensions (hwd / cm)	178 x 5.6 x 6.6
Unit Weight (lbs.)	12
Unit Weight (kg)	5.44
Form Factors Supported	0U vertical rackmount; includes rackmount brackets. Supports toolless mounting in button-mount compatible racks
PDU Form Factor	0U; Vertical
ENVIRONMENTAL	
Storage Temperature Range	5 to 122F (-15 to 50C)
Relative Humidity	5 to 95% non-condensing



Operating Elevation (ft.)	0-10,000
Operating Elevation (m)	0-3000
COMMUNICATIONS	
SNMP Compatibility	Built-in LX-Platform network interface provides remote monitoring via web, Telnet, and SNMP. Remote management enables outlets to be turned on and off individually
CERTIFICATIONS	
Certifications	Tested to UL 60950-1 (USA, Canada), Class A (Emissions), NOM (Mexico), RoHS compliant, TAA Compliant
WARRANTY	
Product Warranty Period (Worldwide)	2-year limited warranty

© 2017 Tripp Lite. All rights reserved. All product and company names are trademarks or registered trademarks of their respective holders. Use of them does not imply any affiliation with or endorsement by them. Tripp Lite has a policy of continuous improvement. Specifications are subject to change without notice.

Tripp Lite uses primary and third-party agencies to test its products for compliance with standards. See a list of Tripp Lite's testing agencies:

<https://www.tripplite.com/products/product-certification-agencies>