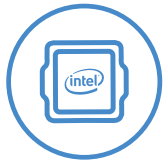


LEGION 5i Pro (16")

PRO-LEVEL PERFORMANCE.

Engineered to deliver devastation in and out of the arena, the Legion 5i Pro features the latest generation Intel® Core™ processing and up to 140W NVIDIA® GeForce RTX™ 3070 dishing out high resolution gaming at optimal-frame-rates with the Legion AI Engine and optimally cooled via the Legion Coldfront 3.0 thermal system. The world's leading 16" QHD (2560 x 1600) gaming display with up to 165 Hz refresh sets up a killer "winning zone" that towers over your enemies' sightlines with a 16:10 aspect ratio, giving you an extra edge in screen real estate by upping your peripheral vision. Combined with Nahimic 3D audio that pinpoints their footsteps in space, you'll be able to see and hear any scrub headed your way before they even hit firing range. Enjoy elite gaming experiences on the Legion 5i Pro, available in Storm Grey or Stingray White.

WHY YOU SHOULD BUY THE LENOVO LEGION 5i PRO (16")



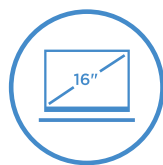
Gaming happens with Intel®

11th Generation Intel® Core™ H-Series processors allow you to create and dominate with 45 Watts of dedicated processing power.



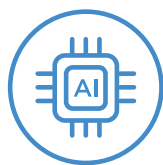
RTX. It's On.

NVIDIA® GeForce RTX™ 30 Series graphics bring 2nd Generation Ray Tracing, 3rd Generation AI Tensor Cores and more for a huge leap in graphical performance.



Serious frame advantage

Dominate the competition with maximum screen real estate. Enjoy WQXGA (2560 x 1600) resolution, 165 Hz refresh rate, a 16:10 aspect ratio with best-in-class color accuracy and high dynamic range.



Boost framerates with the Lenovo Legion AI Engine

Exclusive to Lenovo Legion laptops, the Lenovo Legion AI Engine, a system of AI solutions, dynamically shifts power between the CPU and GPU for more FPS on today's top AAA titles.



WWW.LENOVO.COM



Lenovo

LEGION 5i Pro (16")

SPECIFICATIONS

Lenovo Legion 5i Pro 16ITH-6*

PERFORMANCE

Processor

11th Generation Intel® Core™ i7-11800H
11th Generation Intel® Core™ i5-11400H

Operating System

Windows 10 Pro
Windows 10 Home

Graphics

NVIDIA® GeForce RTX™ 3070 Laptop GPU
8 GB GDDR6

Listed Boost Clock 1560 MHz, Achieved Boost Clock 1620 MHz, Maximum Graphics Power 140W¹

NVIDIA® GeForce RTX™ 3060 Laptop GPU
6 GB GDDR6

Listed Boost Clock 1425 MHz, Achieved Boost Clock 1702 MHz, Maximum Graphics Power 130W¹

NVIDIA® GeForce RTX™ 3050 Ti² Laptop GPU
4 GB GDDR6

Listed Boost Clock 1485 MHz, Achieved Boost Clock 1695 MHz, Maximum Graphics Power 95W¹

NVIDIA® GeForce RTX™ 3050² Laptop GPU
4 GB GDDR6

Listed Boost Clock 1500 MHz, Achieved Boost Clock 1740 MHz, Maximum Graphics Power 95W¹

Memory

3200 MHz DDR4: 8 GB / 16 GB / 32 GB

Storage

PCIe SSD Gen 4 : 512 GB / 1 TB

PCIe SSD Gen 3 : 256 GB / 512 GB / 1 TB

Battery³

Up to 7.3 Hours (Target)⁴
Rapid Charge Pro

Power Adapter

Starting at 230W Slim Adapter

DESIGN

Display

16" WQXGA (2560 x 1600) IPS; 16:10 (165 Hz / 3 ms Response Time⁵ / 100% sRGB / 500 nits / Up to VESA DisplayHDR™ 400 Certified / Dolby Vision® Support / NVIDIA® G-SYNC™ / Low Blue Light - TUV Certification)

Dimensions (W x D x H) (Target)⁴

(mm) : 356 x 264.2 x 21.7-26.85
(inches) : 14.01" x 10.4" x 0.86"-1.1"

Weight (Target)⁴

Starting at 2.3 kg (5.07 lbs)

Backlit Keyboard

White Backlight
Blue Backlight⁶
4-Zone RGB Backlight⁷

Colors

Storm Grey
Stingray White⁷



CONNECTIVITY

Webcam

Built-in HD Webcam (720p) with E-Shutter

WLAN

2x2 Intel® WiFi 6 (802.11 ax)

Bluetooth⁸

Starting from Bluetooth® 5.1

Audio

2 x 2W Stereo Speakers

I/O (Input/Output) Ports

Left Side

1 x Thunderbolt™ 4
1 x Audio Jack

Right Side

1 x USB Type-A (USB 3.2⁹ Gen 1)
1 x E-Shutter Button

Rear

3 x USB Type-A 3.2⁹ Gen 1 (1 x Always-On 5V)
1 x Thunderbolt™ 4
1 x HDMI™ 2.1
1 x RJ45 Ethernet
1 x DC-In

PRELOADED SOFTWARE

- Lenovo Vantage
- Lenovo PC Manager
- McAfee LiveSafe™
- Lenovo Antivirus
- Microsoft Office Trial⁹
- Power2Go

¹ Supports NVIDIA® Max-Q Technologies: Advanced Optimus, Resizable BAR, Dynamic Boost 2.0.

² Embargo lifts May 10, 2021.

³ All battery life claims are approximate and based on results using the MobileMark® 2018 v1.0.2.46 battery life benchmark test. Actual battery life will vary and depends on many factors such as product configuration and usage, software use, wireless functionality, power management settings, and screen brightness. The maximum capacity of the battery will decrease with time and use.

⁴ Target to be updated Summer 2021.

⁵ With Overdrive (OD).

⁶ Available only on Stingray White version.

⁷ Optional.

⁸ The actual transfer speed of the USB 3.2 will vary and, depending on many factors, such as the processing capability of host and peripheral devices, file attributes and other factors related to system configuration and your operating environments, will be slower than a speed of 20 Gbit/s.

⁹ Except Japan, India and China.

LENOVO SERVICES

Warranty Upgrades - On-site / In-Home Service

Maximizes PC uptime and productivity by providing convenient, fast repair services in your own home.

Accidental Damage Protection

Avoid the hassles of unexpected repair costs. Provides coverage for non-warranted damage incurred under normal operating conditions, such as minor spills, drops or damage to the integrated screen.

Warranty Extensions (1-to-3 Years Total Duration)

This fixed-term, fixed-cost service helps accurately budget for PC expenses, protect your valuable investment and potentially lower the cost of ownership over time.

* Example of Lenovo catalogue naming convention



WWW.LENOVO.COM

Lenovo reserves the right to alter product offerings and specifications at any time, without notice. Lenovo makes every effort to ensure accuracy of all information but is not liable or responsible for any editorial, photographic or typographic errors. All images are for illustration purposes only. For full Lenovo product, service and warranty specifications visit www.lenovo.com. Lenovo makes no representations or warranties regarding third party products or services. **Trademarks:** The following are trademarks or registered trademarks of Lenovo: Lenovo, the Lenovo logo, ideapad, IdeaCentre, yoga and yoga home. Microsoft, Windows and Vista are registered trademarks of Microsoft Corporation. Ultrabook, Celeron, Celeron Inside, Core Inside, Intel, Intel Logo, Intel Atom, Intel Atom Inside, Intel Core, Intel Inside, Intel Inside Logo, Intel vPro, Itanium, Itanium Inside, Pentium, Pentium Inside, vPro Inside, Xeon, Xeon Phi, and Xeon Inside are trademarks of Intel Corporation in the U.S. and/or other countries. Other company, product and service names may be trademarks or service marks of others. Visit www.lenovo.com/lenovo/us/en/safecomp/ periodically for the latest information on safe and effective computing. ©2021 Lenovo. All rights reserved.



Lenovo