



# Jaco Clamp for Logitech Speaker

Part Number: 51-4174

Quote Description: KIT, CLAMP, LOGITECH SPEAKER

Product Group: HC-Options - Holder and Shelf

Minimum Order Qty: 1

Weight: 0.20 LB

Length: 2.18"

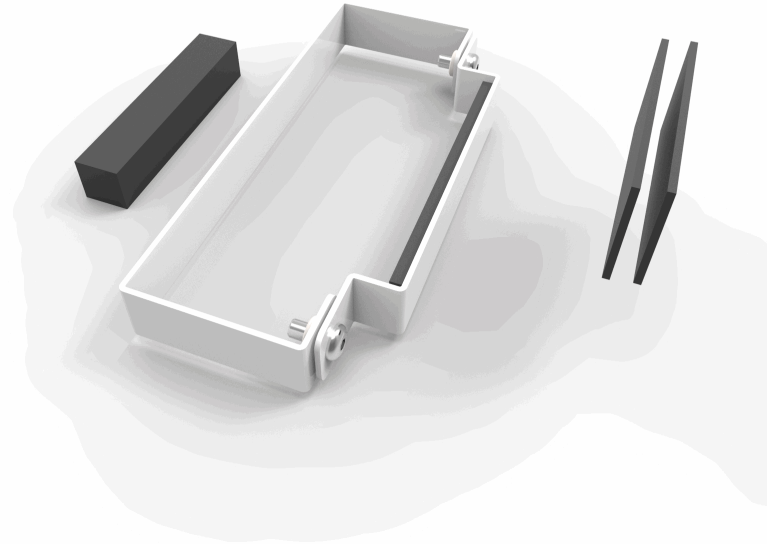
Width: 4.84"

Height: 0.60"

Warranty: 7 Year Structural;

### Product Description:

Add additional baskets, sanitary wipes holders, printer shelves, barcode scanners, pen cups, and more to your Jaco cart. Mounting locations are available in several places including the worksurface, post, and cart base. All Jaco options are made with durable, powder coated aluminum and steel, and come in a variety of sizes and mounting locations.



### Product Compatibility:

100: No	200: No	310: No	510: No	J1-10: No	WS-14: No
105: Yes	210: No	320: No	510-L250: No	J1-10-L250: No	WS-25: No
160: No	220: No		510-L500: No	J1-10-L500: No	
	225: No				
			520: No	J1-20: No	WA-40: No
			520-L250: No	J1-20-L250: No	WA-60: No
			520-L500: No	J1-20-L500: No	WA-80: No

### Additional Compatibility Notes:

Custom for Carolinas Health Care, Logitech speaker clamps to the Tablet Arm on 105 Cart only.

