

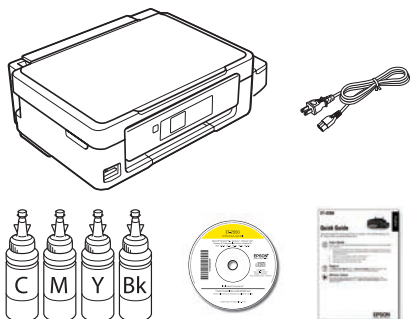
ET-2550

Start Here

Read these instructions before using your product.

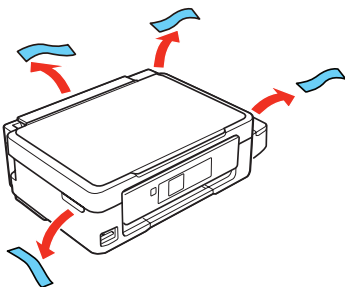
Note for Spanish speakers/Nota para hispanohablantes: Para obtener instrucciones de configuración en español, consulte la *Guía de instalación* en epson.com/support/et2550sp (requiere una conexión a Internet).

1 Unpack

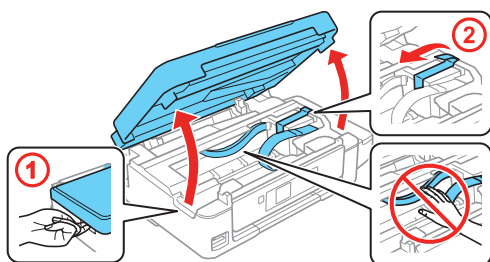


Note: Do not open the ink bottles until you are ready to fill the ink tanks. The ink bottles are vacuum packed to maintain reliability.

- 1 Remove all protective materials from the product.

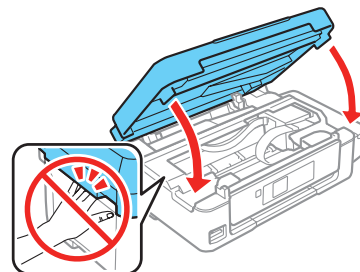


- 2 Lift up the scanner unit and remove all protective materials from inside the product.



Caution: Do not touch the flat white cable or the ink tubes and their translucent cover.

- 3 Lower the scanner unit.

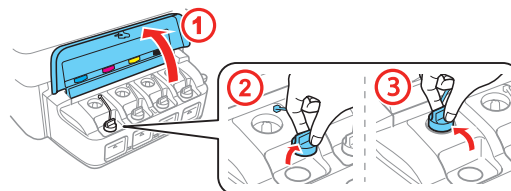


2 Fill ink tanks

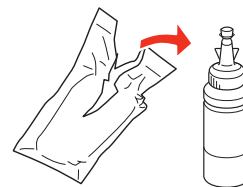
Note: This product requires careful handling of ink. Wear disposable gloves and place a sheet of paper under the ink tank when you fill or refill the ink tanks, as ink may splatter. If ink spills, wipe it off immediately with a damp towel to avoid permanent stains. If ink gets on your clothes or belongings, it may not come off.

Warning: Keep the ink bottles out of the reach of children and do not drink the ink.

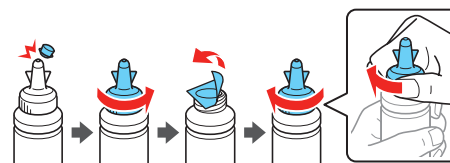
- 1 Open the ink tank unit cover, then remove the cap for the cyan ink tank and attach it to its holder.



- 2 Unpack the cyan ink bottle.

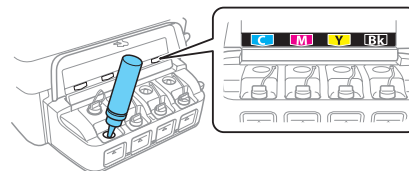


- 3 Snap the bottle tip off, then remove the bottle cap. Carefully remove the protective seal (avoid touching the ink underneath the seal), then close the bottle cap tightly.



Caution: Be sure to close the bottle cap tightly, or ink may leak.

- 4 Fill the tank using all of the ink in the bottle.



Note: Refer to the color coded sticker above the ink tank unit to identify the color of each tank.

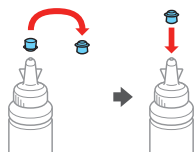
Caution: Be sure to fill each tank with the correct ink color.



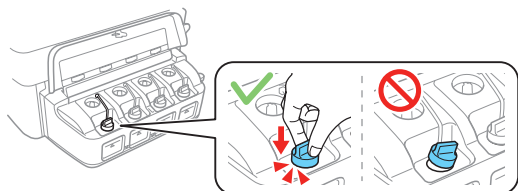
41295000

EPSON
EXCEED YOUR VISION

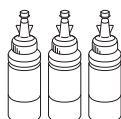
- 5** Carefully seal the bottle using the reverse side of the bottle tip for proper disposal.



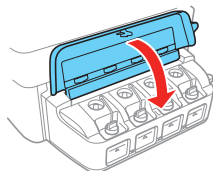
- 6** Replace the ink tank cap securely.



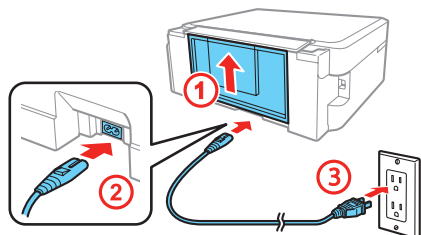
- 7** Repeat the previous steps for the remaining bottles.



- 8** Close the ink tank unit cover.

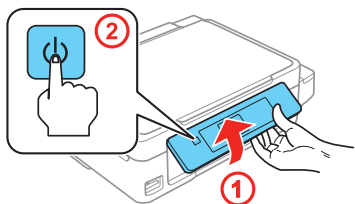


- 9** Connect the power cord to the back of the product and to an electrical outlet.



Caution: Do not connect to your computer yet.

- 10** Raise the control panel and turn on the product.



Note: If an error message appears, turn off the product and check that no protective material has been left inside the product.

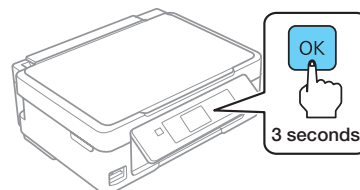
Caution: Do not lower the control panel without first squeezing the release bar underneath or you may damage the product.

- 11** To select English as your language, press the **OK** button.

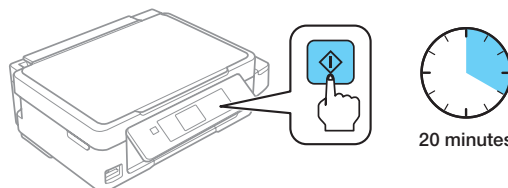
If you want to change the language, press **▲** or **▼** to select it, then press the **OK** button.

Note: You can change the language later using the product's control panel. For more information, see the online *User's Guide*.

- 12** When the message to see the setup manual is displayed on the LCD screen, press and hold the **OK** button for 3 seconds.



- 13** Press the **◆** button to start charging the ink. Ink charging takes approximately 20 minutes. Ink charging is complete when **⏻** stops flashing.

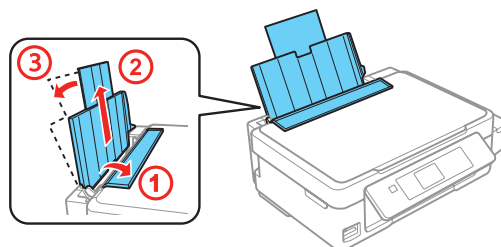


Note: The ink bottles included with the printer are designed for printer setup and not for resale. After some ink is used for charging, the rest is available for printing.

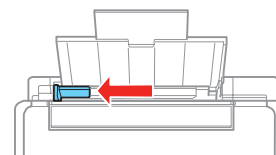
Caution: Do not turn off the product or load paper while the product is charging or you'll waste ink.

3 Load paper

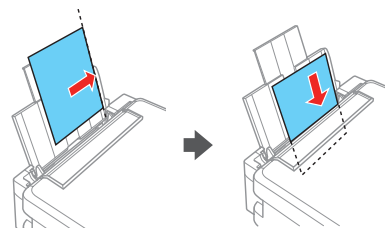
- 1** Make sure the product is not charging. Then flip the feeder guard forward, raise the paper support, and tilt it backwards slightly.



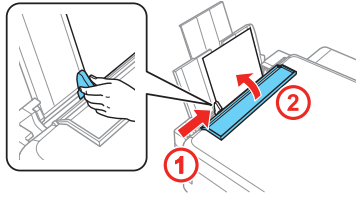
- 2** Slide the edge guide to the left.



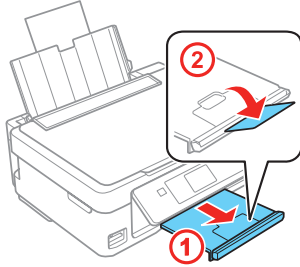
- 3** Load paper, glossy or printable side up and short edge first, against the right side of the rear paper feed slot.



- Slide the edge guide against the paper, but not too tightly, and flip the feeder guard back.



- Pull out the output tray and raise the paper stopper.

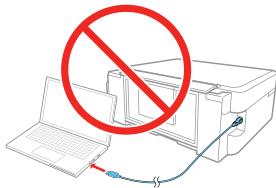


- Select the paper settings on the product's control panel.

4 Install software

Note: If your computer does not have a CD/DVD drive or you are using a Mac, an Internet connection is required to obtain the product software.

- Make sure the product is **NOT CONNECTED** to your computer.



Windows®: If you see a Found New Hardware screen, click **Cancel** and disconnect the USB cable.

- Insert the product CD or download and run your product's software package:

epson.com/support/et2550 (U.S.) or
epson.ca/support/et2550 (Canada)

- Follow the instructions on the screen to run the setup program.

OS X: Make sure you install Software Updater to receive firmware and software updates for your product.

- When you see the Select Your Connection screen, select one of the following:

- Wireless connection**

In most cases, the software installer automatically attempts to set up your wireless connection. If setup is unsuccessful, you may need to enter your network name (SSID) and password.

- Direct USB connection**

Make sure you have a USB cable (not included).

- When software installation is complete, restart your computer.

Mobile printing options

To print from a mobile device, your product must be set up for wireless printing or Wi-Fi Direct®. See the online *User's Guide* for instructions.

iOS/Android™



epson.com/iprint

Epson Connect™

Connect wirelessly from your tablet, smartphone, or computer. Print documents and photos from across the room or around the world.

epson.com/connect

Any problems?

Network setup was unsuccessful.

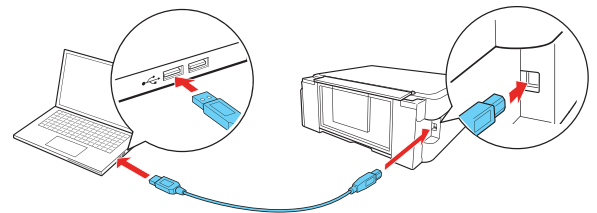
- Make sure you select the right network name (SSID). The product can only connect to a network that supports 2.4 GHz.
- If you see a firewall alert message, click **Unblock** or **Allow** to let setup continue.
- If your network has security enabled, make sure you enter your network password (WEP key or WPA passphrase) correctly. Passwords must be entered in the correct case.

There are lines or incorrect colors in my printouts.

Run a nozzle check to see if any of the print head nozzles are clogged. Then clean the print head, if necessary. See the online *User's Guide* for more information.

Setup is unable to find my product after connecting it with a USB cable.

Make sure the product is on and securely connected as shown:



Any questions?

Quick Guide

Basic information and troubleshooting.

User's Guide

Windows: Click the icon on your desktop or Apps screen to access the online *User's Guide*.

OS X: Click the icon in **Applications/Epson Software/Guide** to access the online *User's Guide*.

If you don't have a User's Guide icon, go to the Epson website, as described in the next column.

Epson technical support

epson.com/support (U.S.) or epson.ca/support (Canada)

(562) 276-4382 (U.S.) or (905) 709-3839 (Canada), 6 AM to 8 PM, Pacific Time, Monday through Friday, and 7 AM to 4 PM, Pacific Time, Saturday. Days and hours of support are subject to change without notice. Toll or long distance charges may apply.

Recycling





Epson offers a recycling program for end of life hardware and ink bottles. Please go to epson.com/recycle for information on how to return your products for proper disposal.

Need paper and ink?

Try Epson® specialty inks and papers to get good results. For the right supplies at the right time, you can purchase them at epson.com/ink3 (U.S. sales) or epson.ca (Canadian sales). You can also purchase supplies from an Epson authorized reseller. Call 800-GO-EPSON (800-463-7766).



ET-2550 refill inks

Color	Part number
 Black	664
 Cyan	664
 Magenta	664
 Yellow	664



EPSON is a registered trademark, Epson Connect is a trademark, and EPSON Exceed Your Vision is a registered logomark of Seiko Epson Corporation. Designed for Excellence is a trademark of Epson America, Inc.

Mac and OS X are trademarks of Apple Inc., registered in the U.S. and other countries.

Android is a trademark of Google Inc.

Wi-Fi Direct® is a registered trademark of Wi-Fi Alliance®.

General Notice: Other product names used herein are for identification purposes only and may be trademarks of their respective owners. Epson disclaims any and all rights in those marks.

This information is subject to change without notice.

© 2015 Epson America, Inc., 4/15

Printed in XXXXXX

CPD-43041