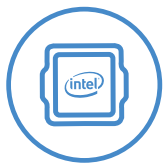


LEGION 5i (17")

PURPOSE-BUILT GAMING PERFORMANCE.

Experience today's top AAA games on the Lenovo Legion 5i. Inside the clean, minimalist chassis of the Legion 5i, available in Phantom Blue, is everything you ever need to compete on equal footing with the pros, including the latest generation of Intel® Core™ processing and up to 130W NVIDIA® GeForce RTX™ graphics for performance that's AI-optimized by the Legion AI Engine powering the revolutionary Legion Coldfront 3.0 and Q-Control. Excel across every AAA title with a 17" FHD display at up to 144 Hz refresh, featuring 72% NTSC color accuracy and support for Dolby Vision®, as well as the new Nahimic 3D audio and the legendary Legion TrueStrike keyboard so you can strike with pinpoint precision.

WHY YOU SHOULD BUY THE LENOVO LEGION 5i (17")



Gaming happens with Intel®

11th Generation Intel® Core™ H-Series processors allow you to create and dominate with 45 Watts of dedicated processing power.



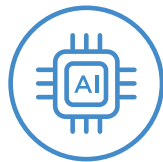
RTX. It's On.

NVIDIA® GeForce RTX™ 30 Series graphics bring 2nd Generation Ray Tracing, 3rd Generation AI Tensor Cores and more for a huge leap in graphical performance.



Fast refresh, deep colors

Legion 5i delivers speed and color clarity for full-fidelity gaming. Enjoy up to 144 Hz refresh rate, Dolby Vision® support and 72% NTSC, all on a 17.3" FHD (1920 x 1080) IPS display.



Boost framerates with the Lenovo Legion AI Engine

Exclusive to Lenovo Legion laptops, the Lenovo Legion AI Engine, a system of AI solutions, dynamically shifts power between the CPU and GPU for more FPS on today's top AAA titles.



WWW.LENOVO.COM



Lenovo

LEGION 5i (17")

SPECIFICATIONS

Lenovo Legion 5i 17ITH6/6H*

PERFORMANCE

Processor

11th Generation Intel® Core™ i7-11800H
11th Generation Intel® Core™ i5-11400H

Operating System

Windows 10 Pro
Windows 10 Home

Graphics

**NVIDIA® GeForce RTX™ 3070 Laptop GPU
8 GB GDDR6**

Listed Boost Clock 1560 MHz, Maximum Graphics Power 130W¹

**NVIDIA® GeForce RTX™ 3060 Laptop GPU
6 GB GDDR6**

Listed Boost Clock 1425 MHz, Achieved Boost Clock 1702, Maximum Graphics Power 130W¹

**NVIDIA® GeForce RTX™ 3050 Ti² Laptop GPU
4 GB GDDR6**

Listed Boost Clock 1485 MHz, Achieved Boost Clock 1695 MHz, Maximum Graphics Power 95W¹

**NVIDIA® GeForce RTX™ 3050² Laptop GPU
4 GB GDDR6**

Listed Boost Clock 1500 MHz, Achieved Boost Clock 1740 MHz, Maximum Graphics Power 95W¹

Memory

3200 MHz DDR4 : 8 GB / 16 GB

Storage

PCIe SSD Gen 4 : 512 GB / 1 TB

PCIe SSD Gen 3 : 256 GB / 512 GB / 1 TB

Battery³

Up to 8 Hours (Target)⁴
Rapid Charge Pro (Supported)

Power Adapter

Starting at 230W Slim Adapter

DESIGN

Display

1. 17.3" FHD (1920 x 1080) IPS (144 Hz / 72% NTSC / 300 nits / Dolby Vision® Enabled)

2. 17.3" FHD (1920 x 1080) IPS (60 Hz / 72% NTSC / 300 nits)

Dimensions (W x D x H) (Target)⁴

(mm) : 398.6 x 290 x 24.3-26.2

(inches) : 15.7" x 11.41" x 0.95"-1.03"

Weight (Target)⁴

Starting at 2.98 kg (6.57 lbs)

Backlit Keyboard

White Backlight

Color

Phantom Blue



CONNECTIVITY

Webcam

Built-in HD Webcam (720p) with Privacy Shutter

WLAN

2x2 Intel® WiFi 6 (802.11 ax)

Bluetooth⁵

Starting from Bluetooth® 5.1

Audio

2 x 2W Speaker with Nahimic Audio

I/O (Input/Output) Ports

Left Side

1 x Thunderbolt™ 4

1 x Audio Jack

Right Side

1 x USB Type-C™ (USB 3.2⁵ Gen 1)

1 x Card Reader

1 x E-Shutter Button

Rear

3 x USB Type-A 3.2⁵ Gen 1 (1 x Always-On 5V)

1 x Thunderbolt™ 4

1 x HDMI™ 2.1

1 x RJ45 Ethernet

1 x DC-In

PRELOADED SOFTWARE

- Lenovo Vantage
- Lenovo PC Manager
- Lenovo Nerve Center
- McAfee LiveSafe™
- Lenovo Antivirus
- Microsoft Office Trial⁶
- Power2Go

¹ Supports NVIDIA® Max-Q Technologies: Advanced Optimus, Resizable BAR, Dynamic Boost 2.0.

² Embargo lifts May 10, 2021.

³ All battery life claims are approximate and based on results using the MobileMark™ 2018 v1.0.2.46 battery life benchmark test. Actual battery life will vary and depends on many factors such as product configuration and usage, software use, wireless functionality, power management settings, and screen brightness. The maximum capacity of the battery will decrease with time and use. Testing by Lenovo.

⁴ Target to be updated Summer 2021.

⁵ The actual transfer speed of the USB 3.2 will vary and, depending on many factors, such as the processing capability of host and peripheral devices, file attributes and other factors related to system configuration and your operating environments, will be slower than a speed of 20 Gbit/s.

⁶ Except Japan, India and China.

LENOVO SERVICES

Warranty Upgrades - On-site / In-Home Service

Maximizes PC uptime and productivity by providing convenient, fast repair services in your own home.

Accidental Damage Protection

Avoid the hassles of unexpected repair costs. Provides coverage for non-warranted damage incurred under normal operating conditions, such as minor spills, drops or damage to the integrated screen.

Warranty Extensions (1-to-3 Years Total Duration)

This fixed-term, fixed-cost service helps accurately budget for PC expenses, protect your valuable investment and potentially lower the cost of ownership over time.

OPTIONS & ACCESSORIES



Lenovo Legion M300 RGB Gaming Mouse

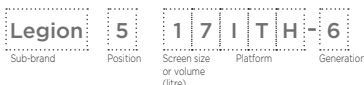


Legion H300 Stereo Gaming Headset



Lenovo Legion 15.6" Recon Gaming Backpack

* Example of Lenovo catalogue naming convention



WWW.LENOVO.COM

Lenovo reserves the right to alter product offerings and specifications at any time, without notice. Lenovo makes every effort to ensure accuracy of all information but is not liable or responsible for any editorial, photographic or typographic errors. All images are for illustration purposes only. For full Lenovo product, service and warranty specifications visit www.lenovo.com. Lenovo makes no representations or warranties regarding third party products or services. **Trademarks:** The following are trademarks or registered trademarks of Lenovo: Lenovo, the Lenovo logo, ideapad, IdeaCentre, yoga and yoga home. Microsoft, Windows and Vista are registered trademarks of Microsoft Corporation. Ultrabook, Celeron, Celeron Inside, Core Inside, Intel, Intel Logo, Intel Atom, Intel Atom Inside, Intel Core, Intel Inside, Intel Inside Logo, Intel vPro, Itanium, Itanium Inside, Pentium, Pentium Inside, vPro Inside, Xeon, Xeon Phi, and Xeon Inside are trademarks of Intel Corporation in the U.S. and/or other countries. Other company, product and service names may be trademarks or service marks of others. Visit www.lenovo.com/lenovo/us/en/safecomp/ periodically for the latest information on safe and effective computing. ©2021 Lenovo. All rights reserved.



Lenovo