

# GV-GEB4900 Cloud AI 4MP H.265 Super Low Lux WDR Pro IR Eyeball Dome IP

## Camera



- Direct-to-Cloud
- AI deep learning: AI Perimeter Protection & Classification (Human, Vehicle)
- 1/3" progressive scan CMOS sensor
- Min. illumination at 0.005 lux
- Triple streams from H.265, H.264 or MJPEG
- Up to 30 fps at 2592 x 1520
- Intelligent IR
- IR distance up to 30 m (100 ft)
- Day and Night function (with removable IR-cut filter)
- Vandal resistance (IK10 for metal casing)
- Ingress protection (IP67)
- 3-axis mechanism (pan / tilt / rotate)
- DC 12V / PoE (IEEE 802.3af)
- Built-in micro SD card slot (SD / SDHC / SDXC / UHS-I, Class 10) for local storage
- Two-way audio capable
- Built-in microphone
- Wide Dynamic Range Pro (WDR Pro)
- Defog
- 3D noise reduction
- GV-Center V2 connection
- AI analytics (Line Crossing, Region Entrance, Region Exiting, Region Intrusion, Target Counting, Heat Map, Loitering Detection, Illegal Parking Detection, Face Detection, Video Metadata)
- Motion detection
- Text overlay
- Privacy mask
- 19 languages supported
- ONVIF (Profile G, S, T, M) conformant

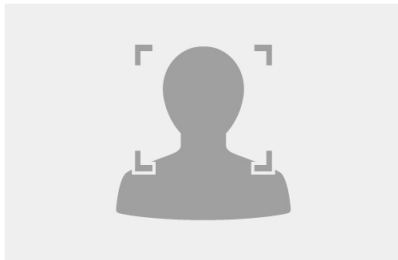
## **Introduction**

GV-GEB4900 is an outdoor, network camera equipped with an automatic IR-cut filter and IR LEDs for day and night surveillance. The camera supports H.265 video codec to achieve better compression ratio while maintaining high quality pictures at reduced network bandwidths. The camera adheres to IK10 and IP67 standards, and can be powered through PoE.

Empowered by deep learning algorithms, AI technology distinguishes human and vehicles from other moving objects. Integrated with GeoVision Video Management Software (VMS), it supports AI perimeter protection, real time alert, events playback and more. By connecting the camera to the cloud-based data center and video surveillance solution, GV-Cloud VMS, thousands of on-site videos, alarm devices, and AI events can be monitored and managed from a single platform.

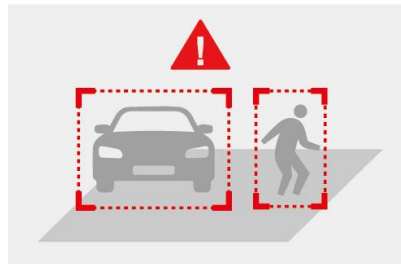
## Deep Learning Function

### Face Detection

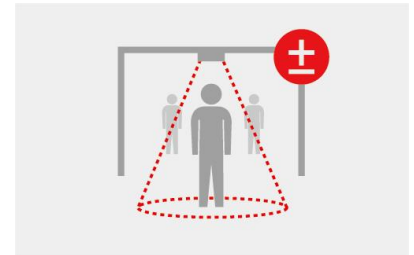


### AI Perimeter Protection

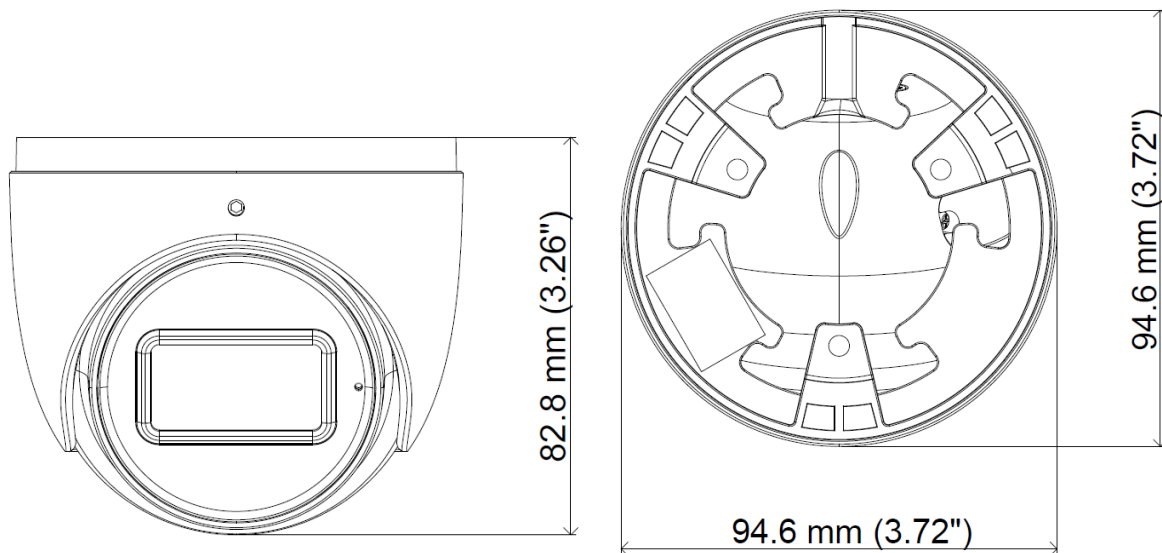
(Region Intrusion, Line Crossing, Region Entrance, Region Exiting)



### People Counting



## Dimensions



## Specifications

### Camera

Image Sensor	1/3" progressive scan CMOS	
Picture Elements	2592 (H) x 1520 (V)	
Minimum Illumination	Color	0.005 Lux (F1.6, AGC ON)
	IR On	0 Lux
Shutter Speed	Automatic / Manual (1/3 ~ 1/100000 sec)	
White Balance	Automatic, Manual	
Gain Control	Automatic, Manual	
S/N Ratio	50 dB	
WDR	WDR Pro	
Dynamic Range	120 dB	

### Lens

Megapixel	4MP
Day / Night	Yes (with removable IR-cut filter)
Lens Type	Fixed
Focal Length	2.8 mm
Maximum Aperture	F/1.6
Mount	M12
Horizontal FOV	95.3°

Operation	Focus	Fixed
	Zoom	Fixed
	Iris	Fixed
IR LED Quantity		1 LED
Max. IR Distance		30 m (100 ft)
<b>DORI</b>		<b>Detect</b> <b>Observe</b> <b>Recognize</b> <b>Identify</b>
Lens	2.8 mm	60.6 m (198.8 ft)    24.2 m (79.3 ft)    12.1 m (39.6 ft)    6.0 m (19.6 ft)
<b>Operation</b>		
Video Compression		H.265, H.265+, H.264, H.264+, MJPEG
Video Streaming		Triple streams from H.265, H.264 or MJPEG
Video Resolution	Main Stream	2592 x 1520 (Default), 2560 x 1440, 2304 x 1296, 1920 x 1080
	Sub Stream	1280 x 720 (Default), 704 x 576, 704 x 480, 640 x 480, 640 x 360, 480 x 240, 352 x 240
	Third Stream	1280 x 720 (Default), 704 x 576, 704 x 480, 480 x 240, 352 x 240
Frame Rate		30 fps at 2592 x 1520 / 2560 x 1440 / 2304 x 1296 / 1920 x 1080 / 1280 x 720 / 704 x 480 / 640 x 480 / 640 x 360 / 480 x 240 / 352 x 240 (60 Hz) 25 fps at 2592 x 1520 / 2560 x 1440 / 2304 x 1296 / 1920 x 1080 / 1280 x 720 / 704 x 576 / 640 x 480 / 640 x 360 / 480 x 240 / 352 x 288 (50 Hz) *The frame rate and performance may vary depending on the number of connections and data bitrates (different scenes).
Maximum throughput	AI off	64 Mbps
	AI on	18 Mbps: one AI function enabled 12 Mbps: multiple AI functions enabled
Maximum stream *When the total bitrate is within the maximum throughput		8 *By default, 2 connections are occupied whether connected to GV-Cloud VMS or not.
Video Analytics		Motion Detection, Object Abandoned/Missing Detection
Smart Alarm		Motion Detection, SD Card Error, SD Card Full, IP Address Conflict, Cable Disconnected, Scene Change Detection, Video Blur Detection, Video Cast Detection, Audio Exception
Image Setting		ROI, Brightness, Contrast, Saturation, Sharpness, Flicker-less, 3D Noise Reduction, Image Orientation (Flip, Mirror, 0°, 90°, 180°, 270°-including Corridor format)
Dual Redundant Images		Yes (for failsafe firmware upgrade)
Audio Compression		G.711
Audio Support		Two-way audio (external speaker required)
<b>Deep Learning Function</b>		
AI Analytics		Face Event: Face Detection Smart Event: - Line Crossing, Region Entrance, Region Exiting, Region Intrusion, Target Counting, Heat Map, Video Metadata: Human & Vehicle classification - Loitering Detection, Illegal Parking Detection  *A maximum of 2 smart detection functions are suggested at a time to ensure comprehensive detection results and the optimized performance by the camera. *Once connected to GV-Cloud VMS / GV-Center V2, up to 2 smart detection functions are supported.
<b>Network</b>		
Interface		10/100 Ethernet
Protocol		802.1x, DDNS, DHCP, FTP, HTTP, HTTPS, IPv4, IPv6, NTP, ONVIF (Profile G, S, T, M), PPPoE, QoS, RTCP, RTMP, RTP, RTSP, SMTP, SNMP, UDP, UPnP
<b>Mechanical</b>		
Camera Angle Adjustment	Pan	0° ~ 360°
	Tilt	0° ~ 75°
	Rotate	0° ~ 360°

Connectors	Power	DC Jack (DC 12V, 1 A) / PoE (IEEE 802.3af)
	Ethernet	RJ-45
	Audio	1 In (built-in microphone, or external speaker and microphone with power supply), 1 Out (stereo phone jack, 3.5 mm / 0.14")
	Local Storage	Micro SD card slot (SD/SDHC/SDXC/UHS-I, Class 10) *UHS-II card type is not supported.

General		
Operation Temperature	-30~ 60°C (-22 ~ 140°F)	
Humidity	0% ~ 95% (no condensation)	
Power Source	DC 12V / PoE (IEEE802.3af)	
Max. Power Consumption	7 W	
Dimensions	Ø 94.6 x 82.8 mm (Ø 3.72" x 3.26")	
Weight	0.46 kg (1.01 lb)	
Ingress Protection	IP67	
Vandal Resistance	IK10 for metal casing	
Certification	CE, FCC, RoHS	

Web Interface		
Installation Management	Web-based configuration	
Maintenance	Firmware upgrade through Web Browser or Utility	
Access from Web Browser	Live View, Playback, Video Recording, Image Quality, Bandwidth Control, Image Snapshot, Two-way Audio Capable, Digital Zoom, Text Overlay, Image Masking, Intelligent Mark	
Language	Hungarian, English, Spanish, Spanish (LA), Italian, Portuguese, Russian, Polish, Romanian, Hebrew, German, French, Dutch, Norwegian, Czech, Turkish, Japanese, Korean, Chinese Traditional	

Software Applications		
Software Supported	GV-VMS (V17.4.6 / V18.3.2 or later), GV-Edge Recording Manager (V2.2.5 or later), GV-Control Center (V4.1.0 or later), GV-Recording Server (V2.3.0, coming soon)	
Smart Device Access	GV-Eye for iOS and Android (V3.1.1 or later)	
Live Viewing	Web Browser (IE, Edge, Chrome, Firefox, Safari), Mobile APP	



**Note:**





1. When connecting to GV-Cloud VMS, avoid connecting to other GV-Software at the same time.
2. Industrial-grade microSD cards are recommended to avoid event recordings writing failure.
3. All specifications are subject to change without notice.

**Packing List**

- |                            |                          |
|----------------------------|--------------------------|
| 1. GV-GEB4900 Eyeball Dome | 4. Drill Template Paster |
| 2. Waterproof Rubber Set   | 5. Download Guide        |
| 3. Screw kit               |                          |

**Accessories**

Model No.	Name		Details
GV-Mount211-4	Wall Mount Bracket		Dimensions: 129.8 x 154.9 x 74.4 mm (5.11" x 6.1" x 2.93") Weight: 0.53 kg (1.16 lb)
GV-Mount211-8 (must be used with GV-Mount506-1)	Wall Mount Bracket		Dimensions: 188.4 x 121 x 137.3 mm (7.41" x 4.76" x 5.4") Weight: 0.52 kg (1.15 lb)

GV-Mount506-1	Junction Box		Dimensions: Ø 117.9 x 47 mm (Ø 4.64" x 1.85") Weight: 0.38 kg (0.84 lb)
GV-Mount507	Junction Box		Dimensions: Ø 96 x 38.8 mm (Ø 3.78" x 1.53") Weight: 0.16 kg (0.30 lb)
GV-PA191	PoE Adapter		GV-PA191 is a Power over Ethernet (PoE) adapter designed to provide power to the IP device through a single Ethernet cable.
GV-PA301	Gigabit PoE Adapter		GV-PA301 is a Gigabit Power over Ethernet (PoE) adapter.
GV-POE Switch			GV-POE Switch is designed to provide power along with network connection for IP devices. The GV-POE Switch is available in various models with different numbers and types of ports.
Power Adapter			Contact our sales representatives for the countries and areas supported.