

Start Here

BlackBerry Curve 9220/9310/9320 Smartphones

BlackBerry Curve

Welcome to BlackBerry!

Get to know your new BlackBerry Curve smartphone.



Explore the home screen



You can move and hide icons. To move an icon, highlight the icon. Press the **⌨** key > click **Move**. On the trackpad, slide your finger to move the icon to the new location. Click the trackpad.


To view the Declaration of Conformity made under Directive 1999/5/EC (HG nr.88/2003), go to www.blackberry.com/go/declarationofconformity. Only use authorized BlackBerry® accessories. This documentation is provided "as is" and without condition, endorsement, guarantee, representation or warranty, or liability of any kind by Research In Motion Limited and its affiliated companies, all of which are expressly disclaimed to the maximum extent permitted by applicable law in your jurisdiction. ©2012 Research In Motion Limited. All rights reserved. BlackBerry®, RIM®, Research In Motion® and related trademarks, names and logos are the property of Research In Motion Limited and are registered and/or used in the U.S. and countries around the world. Bluetooth is a trademark of Bluetooth SIG. Google Mail is a trademark of Google Inc. Wi-Fi is a trademark of the Wi-Fi Alliance. Yahoo! is a trademark of Yahoo! Inc. All other trademarks are the property of their respective owners.



Safety information

IT IS IMPORTANT THAT YOU READ THE SAFETY AND PRODUCT INFORMATION BOOKLET (INCLUDED) PRIOR TO USING YOUR BLACKBERRY SMARTPHONE. It contains essential safety information related to your smartphone.

Need more help?

- For videos and more, go to www.blackberry.com/gettingstarted.
- On the home screen, click the  icon, or click the **Help** icon.
- For user guides, go to www.blackberry.com/go/docs.

1 Insert the SIM card



Depending on your BlackBerry smartphone model or your wireless service provider, you might not need a SIM card for your smartphone.

2 Insert the media card and battery



The media card is optional. If a media card was included, it might already be inserted.

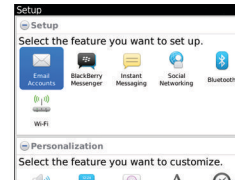
3 Set up your smartphone

1. If prompted, set up your BlackBerry ID. BlackBerry ID is a username and password that gives you access to BlackBerry apps, such as BlackBerry App World storefront. Setting up BlackBerry ID is optional, but you might need it to use certain apps.

When you create a new BlackBerry ID, in the **Username** field, enter an email address that can be accessed from a browser on a computer (for example, a Google Mail or Yahoo! Mail email account).

Make sure that you record your password recovery question and answer for future use.

2. Open the Setup app to set up your email and other apps.



Import your contacts

You can import your contacts from a SIM card or by using the BlackBerry Desktop Software. To download BlackBerry Desktop Software, go to www.blackberry.com/desktopsoftware.

If you have a SIM card, on the home screen, click the **Setup** icon > **SIM Contacts Sync** icon.

Phone tips

- To change your ring tone, on the home screen, click the **Setup** icon > **Ring Tones** icon.
- To check your voice mail, on the home screen, press and hold the 1 key.

Certain features might not be supported by all wireless service providers. Check with your wireless service provider for details.

Switch smartphones

To move data from a previous BlackBerry smartphone, do the following:

1. On your computer, open the BlackBerry Desktop Software.
2. Connect your new smartphone to your computer.
3. Click **Copy data and settings from another device** and complete the instructions on the screen.
4. If necessary, on your new smartphone, click the **Setup** icon > **Email Accounts** and complete the instructions on the screen.

Status indicators

Home screen

New notification	Alarm set
Unopened message count	BlackBerry Messenger
Social feeds	Roaming
BlackBerry App World notification	Sending or receiving data
Wi-Fi turned on	Bluetooth technology turned on

Messages

Unopened	Opened
----------	--------

Messages

Text message	Sent message
Message is sending	Message not sent

Phone

Missed call	Voice mail message
-------------	--------------------

For more icons, click the Help (🗉) icon or see the *Icon Guide* at docs.blackberry.com/icons/71.

BlackBerry App World



Download games, apps, and more! Go to www.blackberry.com/appworld.

Scroll to see new and featured apps
Click an app to find out more or download it



See games
Search apps by category
Manage apps
Downloaded apps appear on the home screen
Set payment options

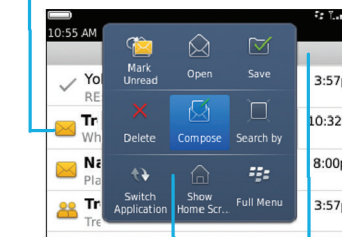
Data plan required. Contact your wireless service provider for details.

Messages



Open a message

Highlight a message and click the trackpad



Open a pop-up menu

Press and hold the trackpad to open a pop-up menu of common actions

See navigation options

Click the Date bar

To see a video that shows how to copy and paste, click the **Setup** icon > **Tutorials** > **Edit Text**.

Send a text message



1. On the home screen, click the **Text Messages** icon.
2. Press the **⌨** key > **Compose Text Message**.
3. In the **To** field, type the contact information.
4. Type a message.
5. Press the **⌨** key > **Send**.

To insert a period while you're typing, press the **Space** key twice.

Additional charges might apply for text messaging. Contact your wireless service provider for details.

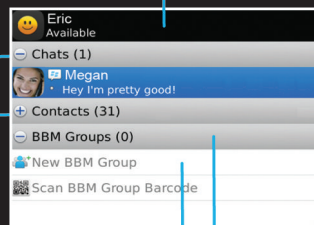
BlackBerry Messenger



Chat with your friends virtually anywhere, anytime!

You can easily open BBM by pressing the key on the left-side of your smartphone.

See your profile and PIN, or change your status



Open contacts

Open groups

Open a chat

Create a new group

Data plan required.

Add a BBM contact using a barcode

1. On the home screen, click the **BlackBerry Messenger** icon.
2. Press the **⌨** key > **Invite to BBM** > **Scan a PIN barcode**.
3. Hold your BlackBerry smartphone so that all four corners of the contact's barcode appear on your screen and you hear a beep.

Show your barcode

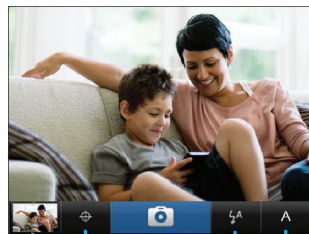
1. At the top of the BBM screen, click your name.
2. Beside **PIN Barcode**, click **Show**.

Camera



1. To take a picture, click the **📷** icon or press the Convenience key on the right side of the smartphone.
2. To zoom in or out, slide your finger up or down on the trackpad.

You can see your pictures by clicking the **Media** icon > **Pictures**.



View pictures

Add your location to the picture

Change the flash setting

Change scene settings

Certain features might not be available on all BlackBerry Curve models.

Change your wallpaper

1. On the home screen, click the **Setup** icon > **Wallpaper** icon.
2. Take a picture or use an existing picture.
3. Press the **⌨** key > **Set As Wallpaper**.
4. Press the **⏪** key to return to the home screen.

Wi-Fi and Bluetooth



Turn on Mobile Network, Wi-Fi, Mobile Hotspot, and Bluetooth technology

Turn off connections (airplane mode)

- To pair with a Bluetooth enabled device, click **Networks and Connections**.
- To connect to a Wi-Fi network, click **Wi-Fi Network**.

Certain features might not be available on all BlackBerry Curve models.

More apps



Browser

Browse websites.



Media

See pictures, play songs, and more.



FM Radio (if supported)

Listen to the radio. When listening to the radio, use your headphones because they are the antenna.



Options

Set options. You can find more options in each app menu.



Help

Find help here or click **Help** in a menu.