

ThinkCentre M70a/M90a

Setup Guide

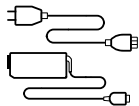
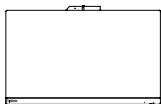
Lenovo

For Barcode Position Only

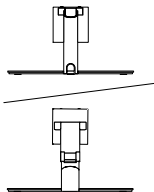
Printed in China

PN: SPXXXXXXX

Initial Setup



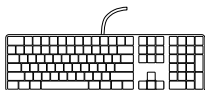
*



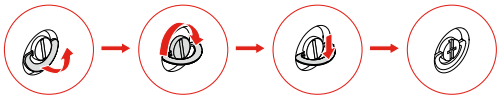
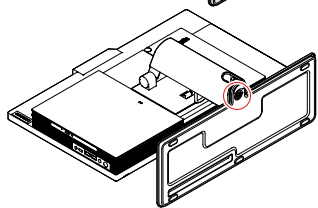
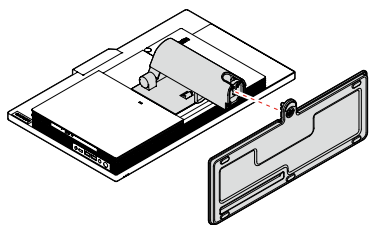
*

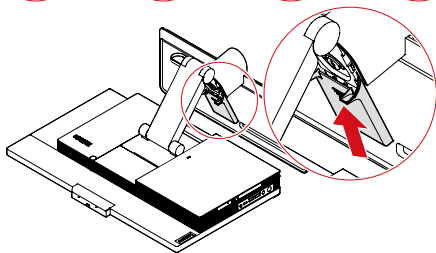
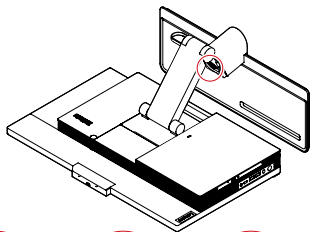
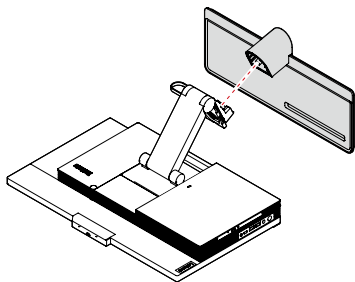


*

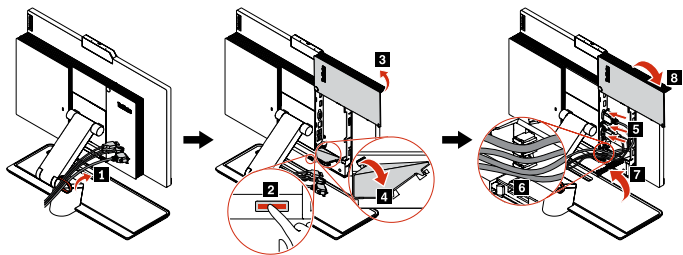
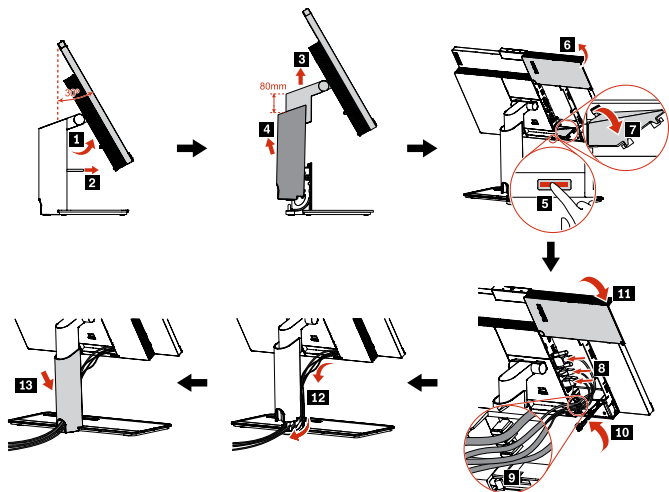


1

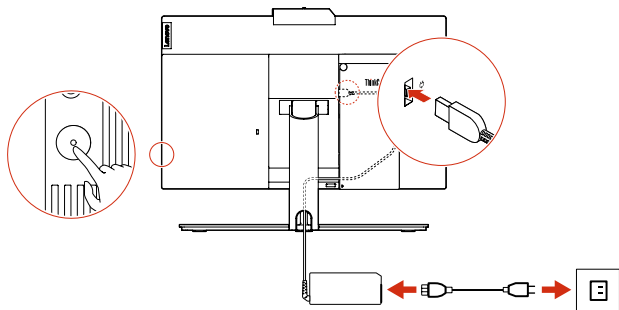




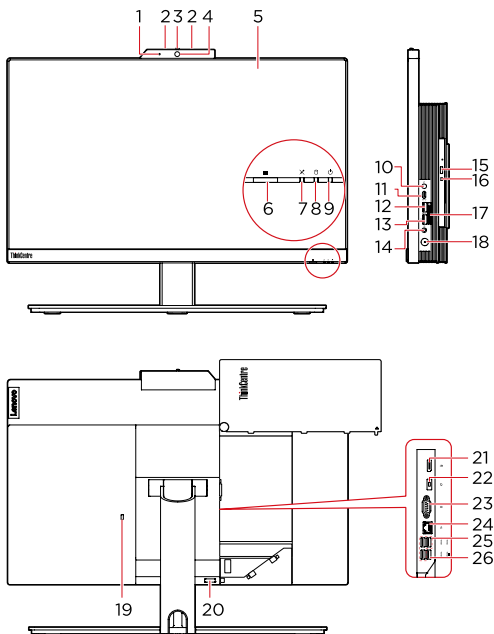
2



3



Overview



- * 1. Integrated camera activity indicator
- * 2. Microphones
- * 3. Integrated camera or IR camera shield
- * 4. Integrated camera or IR camera
- * 5. Multi-touch screen
- * 6. E-privacy button
- * 7. Microphone mute/unmute indicator
- 8. Storage drive activity indicator
- 9. System status indicator
- * 10. Microphone mute/unmute control
- 11. USB-C™ connector (USB 3.2 Gen 1)
- 12. USB 3.2 connector Gen 2
- 13. USB 3.2 connectors Gen 2 (M90a) or USB 3.2 connector Gen 1 (M70a)
- 14. Headset connector
- * 15. Optical drive eject/close button
- * 16. Optical drive activity indicator
- * 17. SD-card slot
- 18. Power button
- 19. Security-lock slot
- 20. Cable cover eject button
- 21. DisplayPort® 1.2 out connector
- 22. Power cord connector
- * 23. Serial connector
- 24. Ethernet connector
- 25. USB 3.2 connectors Gen 1 (3)
- 26. USB 3.2 connector Gen 1 (with keyboard smart power on feature)

 Read the statement on USB transfer rate in the *User Guide*. Refer to the *Safety and Warranty Guide* for accessing the *User Guide*.

Customer Replaceable Units (CRUs)

- Computer stand
- Computer stand base
- Keyboard
- Memory module
- Mouse
- M.2 solid-state drive
- Optical drive
- Optical drive holder
- Power adapter
- Power cord
- Rear cover
- System board shield
- Storage drive
- Storage drive bracket
- VESA® mount bracket
- VESA mount bracket cover

Refer to the *User Guide* for CRU definition.

Additional information

European Union – compliance with the Radio Equipment Directive

Hereby, Lenovo (Singapore) Pte. Ltd., declares that the radio equipment types ThinkCentre M70a and M90a are in compliance with Directive 2014/53/EU.

The full text of the system EU declaration of conformity is available at the following Internet address:

<https://www.lenovo.com/us/en/compliance/eu-doc>

This radio equipment operates with the following frequency bands and maximum radio-frequency power:

Technology	Frequency band [MHz]	Maximum transmit power
WLAN 802.11b/g/n/ax	2400 - 24835	< 20 dBm
WLAN 802.11a/n/ac/ax	5150 - 5725	< 23 dBm
WLAN 802.11a/n/ac/ax	5725 - 5875	< 13.98 dBm
Bluetooth BR/EDR/LE	2400 - 24835	< 20 dBm

Usage of all the radio devices is limited to indoor in the band 5150 MHz to 5350 MHz (channels 36, 40, 44, 48, 52, 56, 60, 64).



First Edition (April 2020)

© Copyright Lenovo 2020.

LIMITED AND RESTRICTED RIGHTS NOTICE: If data or software is delivered pursuant to a General Services Administration "GSA" contract, use, reproduction, or disclosure is subject to restrictions set forth in Contract No. GS-35F-05925.

Reduce | Reuse | Recycle

