

XEROX[®]

Technology | Document Management | Consulting Services

Phaser[®] 6125/6130



colour laser printer

Xerox Phaser[®] 6125/6130 Evaluator Guide



ABOUT THIS GUIDE

This guide will introduce you to Xerox Phaser® 6125/6130 colour laser printers and help you in your printer evaluation process.

CONTENTS

Section 1 — Introducing the Xerox Phaser 6125/6130 colour laser printers	
Product Overview	1
Xerox Phaser 6125/6130 Quick Specifications	2
Section 2 — Evaluating Colour Laser Printers	
Overview	3
Evaluate Printing Performance	4
Evaluate Print Quality	5
Evaluate User Friendliness	6
Section 3 — Configurations, Specifications, Supplies, Support and Information Sources	
Configuration Summary	8
Supplies, Options and Extended Service Agreements	8
Specifications	9
Support and Information Sources	10



SECTION 1

Introducing the Xerox Phaser 6125/6130 colour laser printers

PRODUCT OVERVIEW

Xerox makes colour the easy choice with the refreshingly office-friendly, value-packed Phaser 6125/6130 colour laser printers. They're compact printing solutions powerful enough to handle all of your office printing demands with ease. A single, full-featured configuration makes purchasing the printers simple, and the automated setup process gets you up and running in no time.

Productive performance

Phaser 6125/6130 printers deliver the performance your workgroup needs to make quick work of every print job.

- Network-ready Phaser 6125/6130 printers mean business for your small office or workgroup, with real-world print productivity and a host of built-in features.
- Superior laser printing gets your jobs out fast, with print speeds as fast as 12 ppm for colour and 16 ppm black and white.
- When you're ready to print, Phaser 6125/6130 printers jump in to action with first-page-out times as fast as 17 seconds colour and 14 seconds black and white.

Outstanding colour

Colour or black and white, Phaser 6125/6130 printers take your office printing seriously, delivering outstanding results page after page.

- 600 x 600 x 4 dpi delivers an amazing 16 shades of colour per pixel, giving your business a wider range of colours for your documents.
- Xerox Emulsion Aggregate High Grade (EA-HG) toner technology gives crisp text and printed images with superior clarity and detail, utilising toner particles engineered to have a uniform size and shape.
- PANTONE® Colour approved solid-colour simulations and Xerox colour correction technology provide easy tools for precisely matching the colours of your important business assets, such as company logos.

Easy in the office, easy on the network

Phaser 6125/6130 printers provide maximum ease of use while making your employees more productive.

- PrintingScout®¹ works like a behind-the-scenes troubleshooter, delivering instant pop-up messages when issues arise.
- The CentreWare IS internal web server lets users check the status of print jobs and manage the device without leaving their computers.
- Support for Apple Bonjour™ and easy-to-use print drivers make your new printer perform outstandingly in mixed environments. (Phaser 6130 only)

¹ Phaser 6130 only

XEROX PHASER 6125/6130 QUICK SPECIFICATIONS



PHASER 6125/N

The Phaser 6125 features a single office-friendly, value-packed configuration.

Print Performance:

- Print Speed — Up to 16 ppm black and white, 12 ppm colour
- First-Page-Out Time — As fast as 14 seconds black and white, 17 seconds colour
- Resolution — Up to 600 x 600 x 4 dpi enhanced
- Language Support — Host based
- Driver Support — Windows (see page 9 for details)

Controller:

- Processor — 333 MHz
- Memory — 64 MB standard (non-upgradeable)

Connectivity:

- Network — 10/100Base-TX Ethernet
- Direct Connect — USB 2.0

Paper Capacity: 251 total sheets

- Manual Feed Slot — 1 sheet
- Paper Tray — 250 sheets
- Output Tray — 150 sheets

Paper Handling:

- Supported Sizes — Custom sizes 76.2 x 127 mm to x 355.6 mm
- Supported Weights — 64 to 220 gsm
- Media Types — Plain paper, labels, envelopes, card stock, business cards, glossy coated media

Print Features:

- Standard — Fit to new paper size, Covers/separators, N-up, Skip blank pages, Banner sheets, Poster printing, Watermarks

Reliability:

- Duty Cycle — 40,000 pages per month
- Warranty — One-year on-site

PHASER 6130/N

Builds on the Phaser 6125 with the following additional capabilities.

Print Performance:

- Language Support - True Adobe® PostScript® 3™, PCL® 6 and 5c emulation
- Driver Support - Linux, Apple (Mac OS® 10.2 and higher)

Controller:

- Memory - 128 MB standard (1,152 MB maximum)

Connectivity:

Proof print¹, Secure print¹, RAM Collation¹

¹ Requires 256 MB memory

PHASER 6130 ACCESSORIES

Customise the printer to meet the unique needs of your office

- 256 MB and 512 MB memory upgrades
- Multiprotocol network card, which adds support for DDNS, NetWare, Wins, SSL/HTTPS, IPv6, WSD
- Wireless network adapter
 - European Power Converter
 - UK Power Converter

Section 2

Evaluating Colour Laser Printers

While the benefits of colour are easy to see, evaluating colour printers for future purchase and deployment into your business can be more challenging. Based on years of experience and research into the real-world needs of colour printer users, Xerox has identified some key issues for you to consider as you conduct your colour printer evaluations.

Colour printers that are deployed into small businesses or offices have unique requirements from other colour printers on the market. Overall printing performance, print quality and user friendliness are the attributes that small office customers should evaluate when selecting a colour laser printer for their environments.

Evaluate Printing Performance

Look at the overall performance and feature set of the printer to ensure it will meet your needs and boost your productivity.

Evaluate Print Quality

In business, image is everything — consider the image quality capabilities of the printer and how well it will produce the documents you print.

Evaluate User Friendliness

It's important that printers in this class are easy to set up, use and manage on an ongoing basis — whether you have IT support or not.

This section of the Evaluator Guide will examine each of these areas and suggest ways you can evaluate printers against these requirements. Do this for all the colour laser printers you consider, and you'll see how the Phaser 6125/6130 printers exceed expectations on all counts.



Phaser 6130



Phaser 6125

EVALUATE PRINTING PERFORMANCE

Purchasing a colour printer is not a trivial investment for a small office or small business. Does the printer deliver a **level of performance** that will allow you to **increase productivity** in your office or workgroup? Does the printer deliver **new features** that will enable you to **accomplish new things**?

THE XEROX
ADVANTAGE

HOW THE XEROX PHASER 6125/6130 EXCEED THE PRINTING PERFORMANCE REQUIREMENT

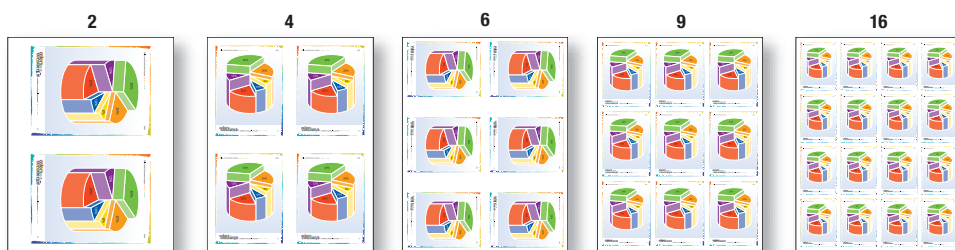
THROUGHPUT

Phaser 6125/6130 compact colour laser printers that are powerful enough to handle the office printing demands of small workgroups and busy individuals with ease. Don't let the low prices fool you, with print speeds as fast as 16 ppm for black and white and 12 ppm for colour they are robust enough to replace your aging black and white printers while adding colour to your documents. Jobs get started quickly with a first-page-out time as fast as 14 seconds for black and white and 17 seconds colour, and even jobs with graphics, photos and charts are processed quickly with a 333 MHz processor and 64 MB (Phaser 6125) or 128 MB (Phaser 6130) of standard memory (Phaser 6130 expandable to 1,152 MB).

ADVANCED PRINT FEATURES

The Phaser 6125/6130 printers offer advanced print features that you might be surprised to find on a printer that's so affordable. Expand the print capabilities of your office, with features ranging from booklet printing to adding watermarks to documents. Advanced features include:

- Fit to new page size — Automatically fits documents to page-sizes other than what is set in the file
- N-up printing — Prints multiple pages on each sheet of media, which is especially convenient when printing presentations
- Skip blank pages — Conserve paper and supplies by skipping blank pages within a document
- Banner sheet¹ — Prints banners using multiple sheets
- Booklet printing¹ — Formats printed documents, such as brochures or handouts, for folding into booklet



- Poster printing¹ (tiling) — Enlarges images by printing onto multiple sheets of paper
- Watermarks¹ — Adds watermarks to printed documents to denote “Confidential” or “Draft” documents
- Proof print² — Prints the first set of a multiple-set job, so you can make sure you've got the right print settings before releasing the remaining sets to be printed
- RAM collation² — Collates print jobs consisting of multiple sets of multi-page documents, which eliminates the need to manually collate documents after the job is completed
- Secure print² — Holds the job at the printer until you release it with a specified 4-digit PIN code, which ensures that sensitive or confidential files are not exposed in the output tray

¹Accessed via PCL driver for Phaser 6130, Windows only

²Requires minimum 256 MB memory (Phaser 6130 only)

EVALUATE PRINT QUALITY

Print quality is actually the sum of many factors involved in reproducing the image on your computer screen to the printed page. Does the printer's **colour and image quality** exceed the requirements for your **internal and external applications**? Is the **range of media types and sizes** you regularly use supported by the printer?

THE XEROX
ADVANTAGE

HOW THE XEROX PHASER 6125/6130 EXCEED THE PRINT QUALITY REQUIREMENTS

COLOUR QUALITY AND PRINT RESOLUTION

The ability to deliver vibrant colour prints and crisp, fine-line detail involves many attributes of a colour printer. Phaser 6125/6130 printers offer multiple print modes that deliver up to 600 x 600 x 4 dpi resolution, enabling an amazing 16 shades of colour per pixel. These printers utilise Xerox-exclusive EA-HG toner technology, which features toner particles with uniform size and shape — resulting in sharp text and fine-line detail. Support for True Adobe® PostScript® 3™ and PCL® 6 emulation means jobs are quickly and accurately processed. Phaser 6125/6130 printers feature PANTONE® Colour approved solid-colour simulations and include a number of colour correction settings to give you true-to-life colours and powerful colour management capabilities.

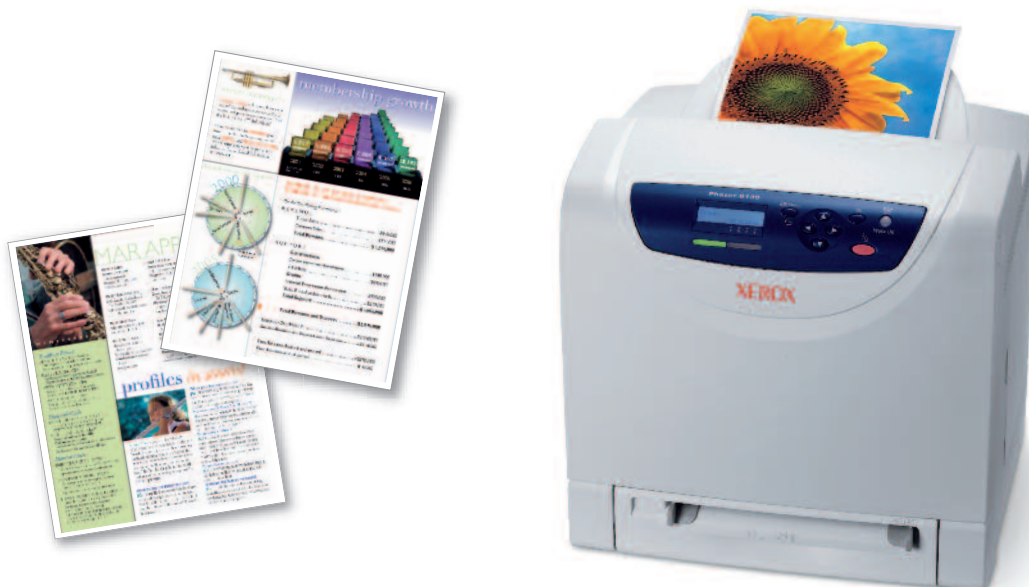
APPLICATION RANGE

Common types of office applications include presentations, reports, proposals, spreadsheets and brochure layouts. The impact of these kinds of applications is maximised when they are printed in colour. The high-quality colour laser output of Phaser 6125/6130 printers will help enliven your presentations, enhance the communication of your ideas in marketing collaterals and improve the professional look of your customer proposals and documents.

MEDIA SUPPORT

Phaser 6125/6130 printers support a wide variety of media, including plain paper, labels, envelopes, card stock, business cards and glossy coated media. Support for a range of media sizes and weights means you have flexibility when printing and producing materials in-house. Phaser 6125/6130 media support includes:

- Media Size — Custom sizes from 76.2 x 127 mm to 216 x 355.6 mm are supported via the manual feed slot and Tray 1.
- Media Weight — The Phaser 6125/6130 support the same media weights from both the manual feed slot and Tray 1, with support for 64 to 220 gsm media.



EVALUATE USER FRIENDLINESS

User friendliness starts when the printer arrives at your office and carries through to your ongoing day-to-day experience. Most small businesses have **limited access to IT resources**, so it's important that the colour printers you adopt are **easy to set up, install and manage**. **Print drivers** need to offer easy access to key features and be intuitively organised. Lastly, when troubleshooting is required, you should have access to strong tools to **minimise downtime** and **maximise productivity**.

THE XEROX
ADVANTAGE

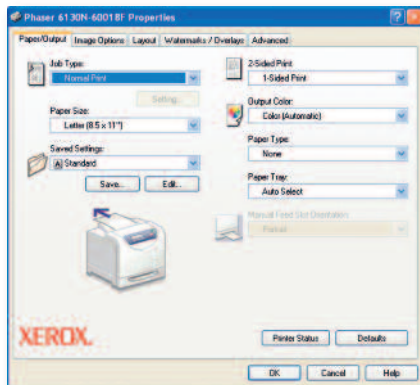
HOW THE XEROX PHASER 6125/6130 EXCEED THE USER FRIENDLINESS REQUIREMENT

SETUP AND INSTALLATION

Once Phaser 6125/6130 printers are unpacked and in place, the installation process is simple and automated. Pre-loaded toner cartridges make this printer virtually plug-and-play — simply plug in the power and connectivity cables, and turn on the printer. Phaser 6125/6130 printers will automatically connect to your network. Then, using the included installation CD, step through the wizard-based print driver installation process (Phaser 6130 only) to connect your computer to the Phaser 6130. In as few as four clicks, you'll be connected and printing.

PRINT DRIVERS

Phaser 6125/6130 print drivers are intuitively organised to offer quick access to the most commonly used features, with easy tab-based access to the complete feature set. The default Paper / Output tab offers features like job type, paper size, paper type, paper tray, image orientation and output colour. More in-depth image options, layout options and advanced settings are available via other tabs.



The Phaser 6130 print driver simplifies programming for print jobs. (PCL driver shown)

DAY-TO-DAY MANAGEMENT

Xerox provides a set of tools and utilities to ease the ongoing management and administration of Phaser 6125/6130. Whether you are managing a single printer, or a group of networked printers and multifunction products (MFPs), Xerox delivers utilities that make your life easier.

- Xerox CentreWare® Internet Services (IS) — CentreWare IS is an embedded web server that allows you to connect to a Phaser 6125/6130 printer via any standard web browser to monitor printer status, view the print job queue, manage settings and properties and access troubleshooting and support resources.
- Xerox CentreWare Web Network Management Utility — Companies that have multiple printers and MFPs connected to their networks can install, view monitor device status, configure, track usage and troubleshoot from their computer via one convenient and powerful web application. Additionally, the interoperability of CentreWare Web means you can manage your non-Xerox devices as well.

EVALUATE USER FRIENDLINESS (CONTINUED)

SUPPLY MANAGEMENT

Convenient toner-level gauges are located on the front panel and via CentreWare IS. Access to current print-cartridge and maintenance-item levels helps you predict when you need to order replacement supplies.

Supply replacement is simple as well, with all supplies accessed through a side-door on the printer. The ultra-slim, easy-to-load toner cartridges come with far less packaging and take up substantially less storage space.

Phaser 6125/6130 supplies are conveniently accessed via side panel.



TROUBLESHOOTING

To avoid downtime and maximise productivity, Phaser 6125/6130 printers include these convenient, proactive troubleshooting tools to help you keep your printer up and running:

- PrintingScout® — Saves precious time by tracking print jobs and providing immediate print-issue alerts with instructions on how to resolve problems.
- Online Support Assistant — Access online troubleshooting information from the same Knowledge Base library used by Xerox customer support professionals, directly from CentreWare IS.

The intuitive front panel interface gives users quick and easy access to the printer's built-in features and settings.



Quickly check toner levels on the printer's front panel display or at your computer

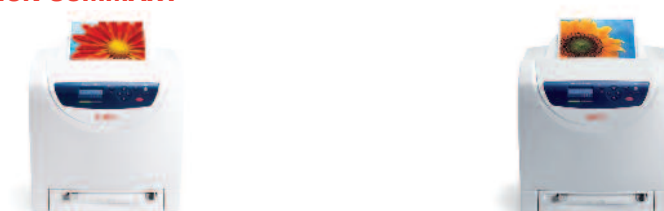


*Phaser 6130 only

Section 3

Configuration Summary, Specifications, Supplies, Support and Information Sources

PHASER 6125/6130 CONFIGURATION SUMMARY



	Phaser 6125	Phaser 6130
Speed	Up to 12 ppm colour / 16 ppm black and white	
Duty cycle	Up to 40,000 pages / month ¹	
Paper Handling		
Paper input	Tray 1: 250 sheets, Custom sizes: 76.2 x 127 mm to 216 x 355.6 mm	
	Manual Feed Slot: 1 sheet, Custom sizes: 76.2 x 127 mm to 216 x 355.6 mm	
Paper output	150 sheets	
Print		
First-page-out time	As fast as 17 seconds colour / 14 seconds black and white	
Resolution (max)	600 x 600 x 4 dpi	
Processor	333 MHz	
Memory (std / max)	64 MB/ 64 MB	128 MB/ 1,152 MB
Connectivity	10/100 Base-TX Ethernet, USB 2.0	
Page Description Languages	Host Based Printing	PCL® 6 emulation, Adobe® PostScript® 3™
Mac OS® support:	NA	Standard
Print features	Skip blank pages, N-up, Fit to new page size, Booklet printing ² , Watermarks ² , Poster ²	
	Banner sheets ² , Secure Print ³ , Proof Print ³ , RAM collation ³	
Warranty	One year on-site warranty	

¹ Print volume uniformly distributed over 30 days

² Accessed via PCL driver on Phaser 6130

³ Requires minimum 256 MB memory

PHASER 6125/6130 SUPPLIES, OPTIONS AND EXTENDED SERVICE AGREEMENTS

Supplies	Part Number	Description	Capacity
For Phaser 6125 Supplies, Printer ships with 500 page ¹ black and colour toner cartridges			
	106R01331	Phaser 6125 Cyan Standard-Capacity Printer Cartridge	Average 1,000 standard pages ¹
	106R01332	Phaser 6125 Magenta Standard-Capacity Printer Cartridge	Average 1,000 standard pages ¹
	106R01333	Phaser 6125 Yellow Standard-Capacity Printer Cartridge	Average 1,000 standard pages ¹
	106R01334	Phaser 6125 Black Standard-Capacity Printer Cartridge	Average 2,000 standard pages ¹
For Phaser 6130 Supplies, Printer ships with 1,000 page ¹ black and colour toner cartridges			
	106R01278	Phaser 6130 Cyan Standard-Capacity Printer Cartridge	Average 1,900 standard pages ¹
	106R01279	Phaser 6130 Magenta Standard-Capacity Printer Cartridge	Average 1,900 standard pages ¹
	106R01280	Phaser 6130 Yellow Standard-Capacity Printer Cartridge	Average 1,900 standard pages ¹
	106R01281	Phaser 6130 Black Standard-Capacity Printer Cartridge	Average 2,500 standard pages ¹

¹Average Continuous Composite CMY Yield in accordance with ISO/IEC 19798. Yield will vary based on image, area coverage and print mode.

PHASER 6125/6130 SUPPLIES, OPTIONS AND EXTENDED SERVICE AGREEMENTS (Continued)

Options	Part Number	Description
(Phaser 6130 only)	097S03743	256MB Phaser Memory
	097S03635	512MB Phaser Memory
	097S03745	Multi-Protocol Network Card includes DDNS, IPP, SMB, NetWare, Wins, SSL/HTTPS, IPv6, WSD
	097S03741	Wireless Network Adapter European Power Converter
	097S03742	Wireless Network Adapter UK Power Converter

Extended Service Agreements	Part Number	Description
	6125 ES 2	1 Year Extended On-Site Service (Total 2 Years On-Site When Combined With 1 Year Warranty)*
	6125 ES 3	2 Year Extended On-Site Service (Total 3 Years On-Site When Combined With 1 Year Warranty)*
	6130 ES 2	1 year Extended On-Site Service (Total 2 Years On-Site When Combined With 1 Year Warranty)*
	6130 ES 3	2 years Extended On-Site Service (Total 3 Years On-Site When Combined With 1 Year Warranty)*

* Available for purchase during first 90 days of product ownership.

PHASER 6125/6130 SPECIFICATIONS

Device Management	CentreWare® IS Embedded Web Server, CentreWare Web Network Management Utility, Email alerts, PrintingScout® (Phaser 6130 only)
Printer Driver Support	<p>Apple: Mac OS® X 10.2 and higher (Phaser 6130 only)</p> <p>Linux: Red Hat® Enterprise Linux ES (versions 3 and 4), Red Hat Fedora™ Core 1, SUSE™ Linux 9.2 and 9.3 Professional, Yellow Dog 3.x, Turbolinux 10 Desktop (Phaser 6130 only)</p> <p>Microsoft: Windows® 2000, Windows 2003 Server, Windows XP, Windows XP Home Edition (SP1 or higher), Windows Vista</p>
Media Handling	<p>Supported Sizes: Custom sizes from 76.2 x 127 mm to 215.9 x 355.6 mm</p> <p>Supported Weights: 64 to 220 gsm, Manual two-sided printing: 64-164 gsm</p> <p>Media Types: Plain paper, labels, envelopes, card stock, business cards, glossy coated media</p>
Operating Environment	<p>Temperature:</p> <ul style="list-style-type: none"> Storage: 0° to 35° Celsius Operating: 10° to 32° Celsius <p>Humidity:</p> <ul style="list-style-type: none"> Storage: 15% to 80% Operating: 15% to 80% <p>Sound pressure levels:</p> <ul style="list-style-type: none"> Printing: 51.6 dB(A) Standby: 25.7 dB(A) <p>Sound Power Levels:</p> <ul style="list-style-type: none"> Printing: 6.46 B Standby: 4.30 B <p>Warm up time:</p> <ul style="list-style-type: none"> 30 seconds or less
Electrical	<p>Power 220–240 VAC, 50/60 Hz</p> <p>Power Consumption:</p> <ul style="list-style-type: none"> Power Save: Less than 5 watts Standby: Less than 50 watts Printing: Less than 280 watts <p>ENERGY STAR® qualified</p>
Dimensions	<p>Width: 400 mm</p> <p>Depth: 445 mm</p> <p>Height: 389 mm</p> <p>Weight: 17.2 kg</p>
Certification	<p>FCC Part 15, Class B</p> <p>Listed UL 60950-1/CSA 60950-1-03</p> <p>CE Mark applicable to Directives 73/23/EEC and 89/336/EEC</p> <p>Section 508 ADA</p>



SUPPORT AND INFORMATION SOURCES

UNRIVALLED SERVICE AND SUPPORT

Behind every Xerox product is a large network of customer support that's unrivalled in the industry and available when you need it. Xerox service professionals use leading-edge technologies to keep you up and running. They're even linked to the engineers who designed your product, so you can be confident when you choose Xerox. And genuine Xerox supplies are always easily available.

ADDITIONAL INFORMATION SOURCES

Phaser 6125/6130 Front Panel:

The Front Panel offers device settings, system status and troubleshooting information.

Customer Documentation contains:

- Installation Guide
- Quick User Guide
- Software/Documentation CD-ROM
- Registration Card
- Warranty Booklet

On the Web

Visit www.xerox.com/office for:

- Product, supply and support information
- Downloading drivers
- Finding your local Xerox sales representative
- Online documentation

Visit www.xerox.com/office/support for:

Support and service information, including the same troubleshooting Knowledge Base used by Xerox Customer Support staff to provide the latest technical information on:

- Application issues
- Errors
- Print-quality issues
- Troubleshooting

Questions? Comments? Problems?

If you have any questions, please contact your Xerox sales representative or local reseller, or visit us on the web at

www.xerox.com/office

