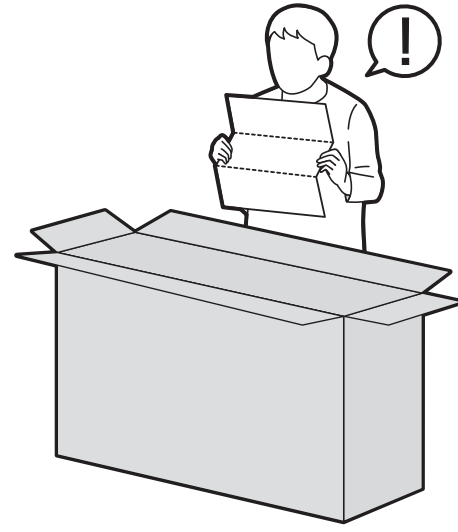
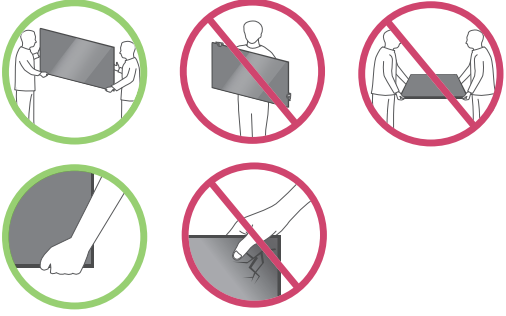
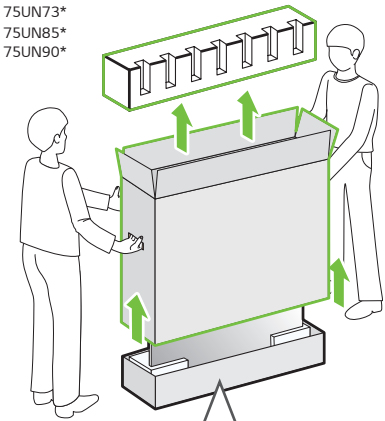


75UN6950ZUD	75UN7100PUD	82UN8570AUD
75UN6951ZUD	75UN7370AUH	82UN8570PUC
75UN6955ZUD	75UN7370PUE	82UN8070PUD
75UN6970PUD	75UN8570AUD	86UN8570AUD
75UN7070PUC	75UN8570PUC	86UN8570PUC
	75UN9070AUD	86UN9070AUD



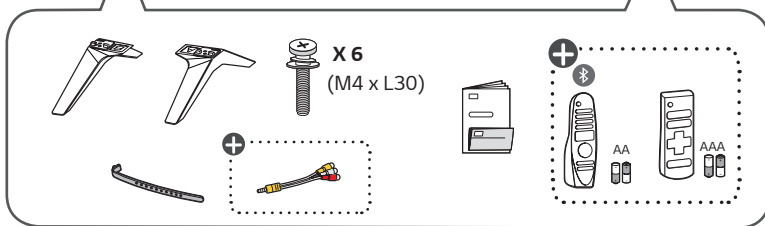
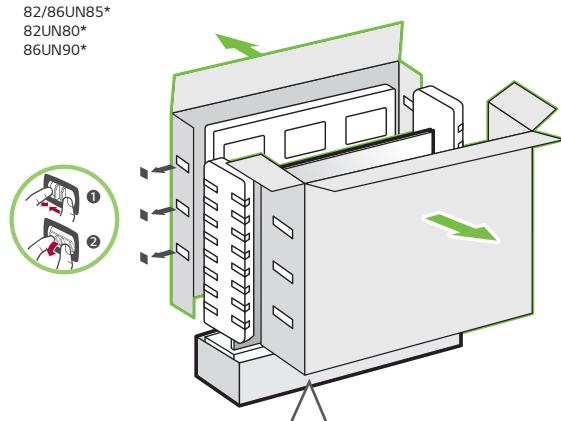
1-A

75UN69*
75UN70*
75UN71*

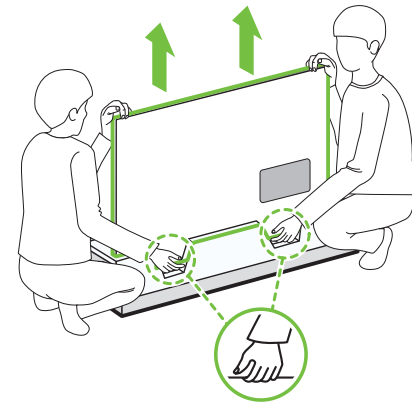


1-B

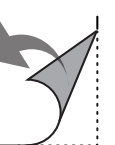
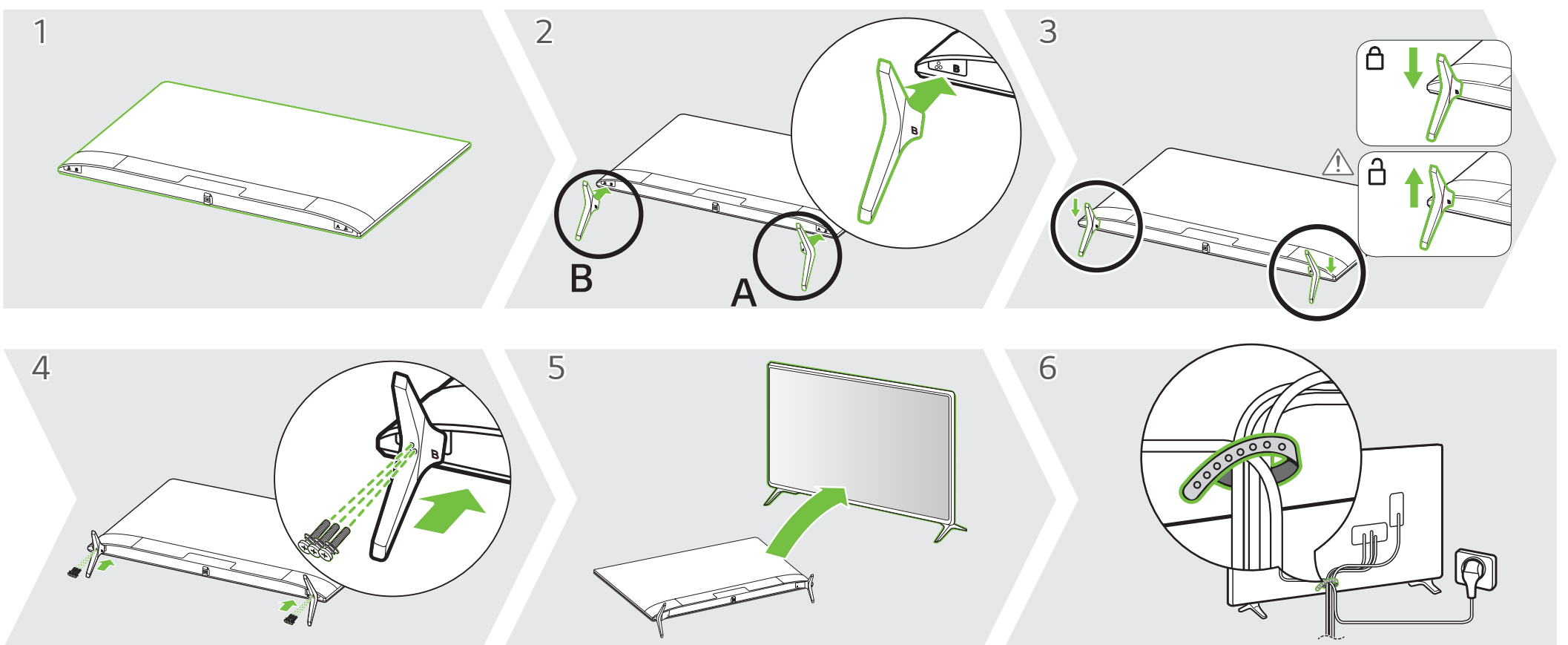
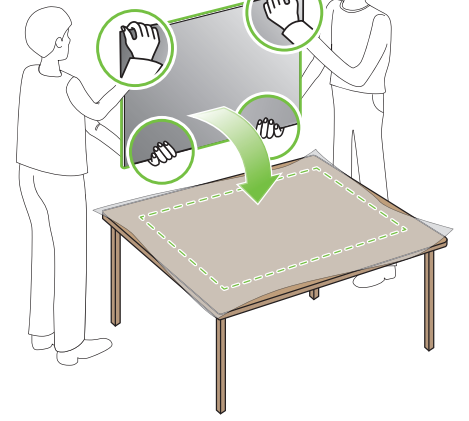
82/86UN85*
82UN80*
86UN90*



2



3



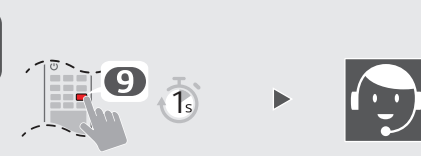
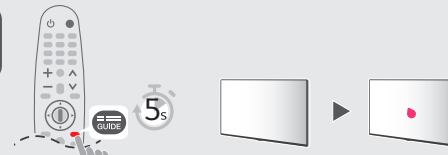
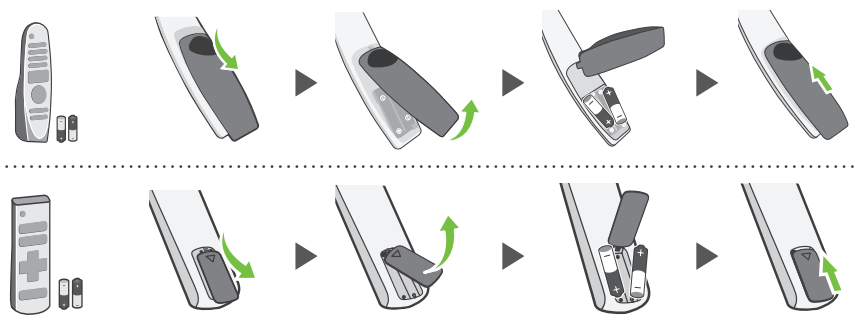
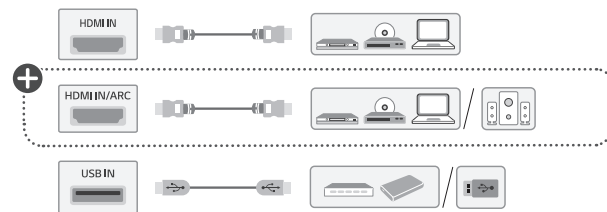
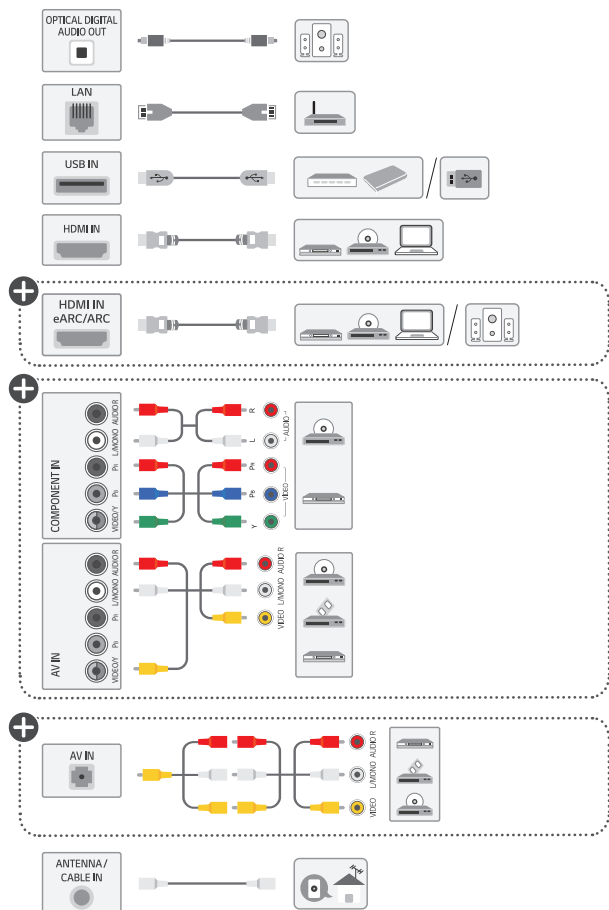


www.lg.com/us/support

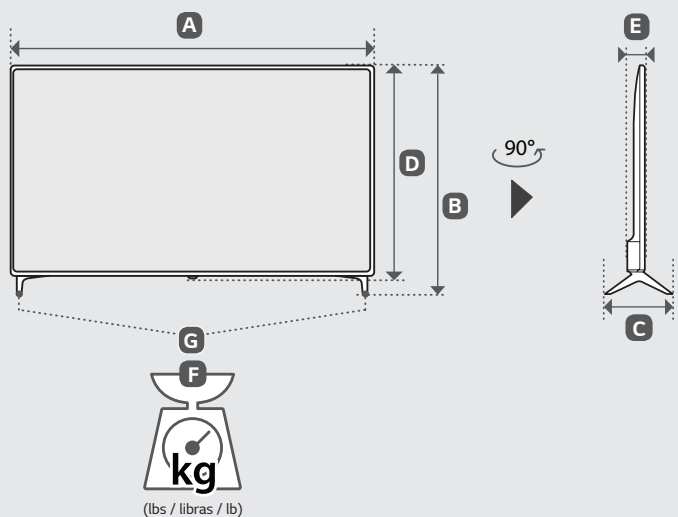
ENGLISH
Easy TV Connect Guide
(Animation)

ESPAÑOL
Guía Rápida de Conexión
del televisor
(Sólo en Inglés)

FRANÇAIS
Guide simplifié pour la connexion
du téléviseur (Offert
en anglais seulement)



A, B, C, D, E : mm (inches / pulgadas / po)
F, G : kg (lbs / libras / lb)



MODELS MODELOS MODÈLES	A		B		C		D		E		F		F-G		Power consumption
															Consumo de potencia
															Consommation électrique
75UN6950ZUD 75UN6951ZUD 75UN6955ZUD 75UN6970PUD 75UN7070PUC 75UN7100PUD 75UN7370AUH 75UN7370PUE 75UN8570AUD 75UN8570PUC 75UN9070AUD	1,693 (66.6)	1 693 (66,6)	1,048 (41.2)	1 048 (41,2)	345 (13.5)	345 (13,5)	978 (38.5)	978 (38,5)	88.8 (3.4)	88,8 (3,4)	35.4 (78.0)	35,4 (78,0)	34.6 (76.2)	34,6 (76,2)	240 W
82UN8570AUD 82UN8570PUC 82UN8070PUD	1,850 (72.8)	1 850 (72,8)	1,138 (44.8)	1 138 (44,8)	345 (13.5)	345 (13,5)	1,068 (42)	1 068 (42)	89.9 (3.5)	89,9 (3,5)	47.0 (103.6)	47,0 (103,6)	46.2 (101.8)	46,2 (101,8)	315 W
86UN8570AUD 86UN8570PUC 86UN9070AUD	1,943 (76.4)	1 943 (76,4)	1,188 (46.7)	1 188 (46,7)	345 (13.5)	345 (13,5)	1,118 (44)	1 118 (44)	93.3 (3.6)	93,3 (3,6)	45.0 (99.2)	45,0 (99,2)	44.2 (97.4)	44,2 (97,4)	335 W

Power requirement / Alimentación requerida / Alimentation

AC 120 V - 50 / 60 Hz



ENGLISH Read **Safety and Reference**.
The Analog Gender adapter can be purchased separately at Customer Service.

ESPAÑOL Leer **Seguridad y Consultas**.
La forma análoga se puede comprar por separado en el servicio de atención al cliente de LG.

FRANÇAIS Lisez **Sécurité et références**.
Vous pouvez vous procurer le connecteur analogique séparément en communiquant avec le Service à la clientèle de LG.

ENGLISH
Easy Setup Guide
Please read this manual carefully before operating your set and retain it for future reference.

ESPAÑOL
Guía Rápida de Configuración
Lea atentamente este manual antes de poner en marcha el equipo y consérvelo para futuras consultas.

FRANÇAIS
Guide de configuration rapide
Avant d'utiliser l'appareil, veuillez lire attentivement ce manuel et le conserver pour pouvoir vous y reporter ultérieurement.

⊕ : Depending upon model / Según el modelo / Selon le modèle