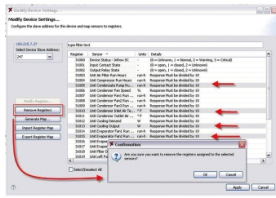


# Product data sheet

Specifications



## Data Center Expert Modbus TCP Output

AP95MODBUS

### Overview

<b>Presentation</b>	The add-on Modbus TCP Output Module enables connection to Building Management Systems through ethernet transmission, ensuring fast data transmission.
<b>Lead time</b>	Usually in Stock

### Ordering and shipping details

<b>GTIN</b>	731304268802
-------------	--------------

### Packing Units

<b>Unit Type of Package 1</b>	PCE
<b>Number of Units in Package 1</b>	1
<b>Package 1 Height</b>	9.02 in (22.9 cm)
<b>Package 1 Width</b>	0.2 in (0.6 cm)
<b>Package 1 Length</b>	7.008 in (17.8 cm)
<b>Package 1 Weight</b>	0.99 lb(US) (0.45 kg)

Price is "List Price" and may be subject to a trade discount – check with your local distributor or retailer for actual price.

## Sustainability

**Green Premium™ label** is Schneider Electric's commitment to delivering products with best-in-class environmental performance. Green Premium promises compliance with the latest regulations, transparency on environmental impacts, as well as circular and low-CO<sub>2</sub> products.

**Guide to assessing product sustainability** is a white paper that clarifies global eco-label standards and how to interpret environmental declarations.

[Learn more about Green Premium >](#)

[Guide to assess a product's sustainability >](#)



Energy Efficient   Take-back   Transparency

## Resource performance

✓ Energy Efficient Product

---

✓ Take-Back Program Available

---

**Reach Regulation**

[REACH Declaration](#)

---

**Eu Rohs Directive**

Not applicable, out of EU RoHS legal scope

---

**Environmental Disclosure**

[Product Environmental Profile](#)

---

**Circularity Profile**

[End of Life Information](#)

---