

# EC-C7000

## Start Here

**IMPORTANT:** Before using this product, make sure you read these instructions and the safety instructions in the online *User's Guide*.

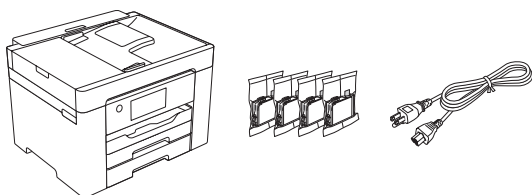
**Note:** This printer is designed for use with Epson® cartridges only, not third-party cartridges or ink. For important ink information, visit [www.epson.com/epsonink](http://www.epson.com/epsonink) (U.S.) or [www.epson.ca/epsonink](http://www.epson.ca/epsonink) (Canada) or see your printer box.

**Important Safety Instructions:** When using telephone equipment, you should always follow basic safety precautions to reduce the risk of fire, electric shock, and personal injury, including the following:

- Do not use the Epson product near water.
- Always keep this guide handy.
- Avoid using a telephone during an electrical storm. There may be a remote risk of electric shock from lightning.
- Do not use a telephone to report a gas leak in the vicinity of the leak.

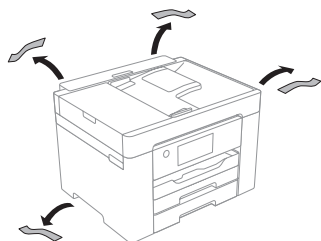
**Caution:** To reduce the risk of fire, use only a No. 26 AWG or larger telecommunication line cord.

## 1 Unpack

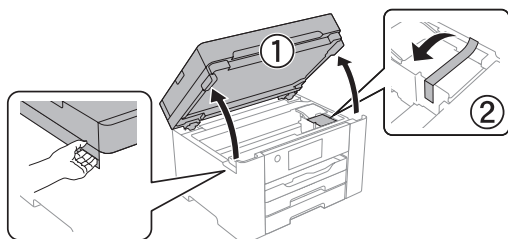


**Note:** Do not open the ink cartridge packages until you are ready to install the ink. Cartridges are vacuum packed to maintain reliability.

- 1 Remove all protective materials from the product.

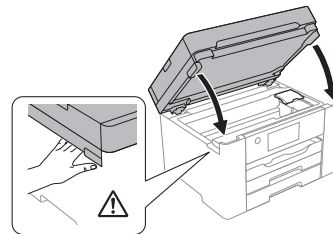


- 2 Lift up the scanner unit until it locks into place and remove all protective materials from inside the product.



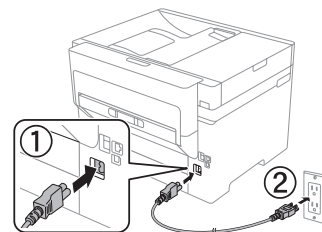
**Caution:** Do not touch the flat white cable.

- 3 Lower the scanner unit.



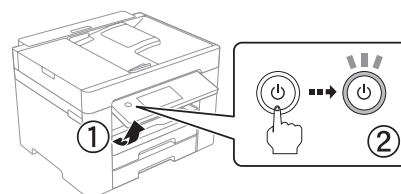
## 2 Turn on and configure

- 1 Connect the power cord to the back of the product and to an electrical outlet.



**Caution:** Do not connect to your computer yet.

- 2 Raise the control panel and turn on the product.



**Note:** If an error code appears, turn off the product and check that no protective material has been left inside the product.

- 3 Select your language, country, date, and time on the LCD screen.

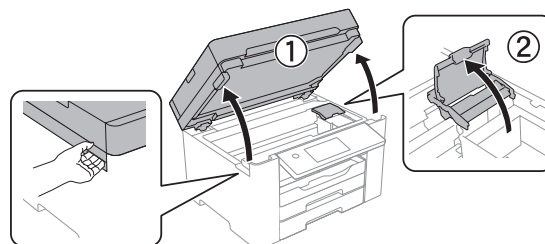
**Note:** You can change these settings later using the product's control panel. For more information, see the online *User's Guide*.

## 3 Install ink cartridges

**Caution:** Keep the ink cartridges out of the reach of children and do not drink the ink.

**Note:** The included initial cartridges are designed for reliable printer setup and cannot be used as replacement cartridges or resold. After setup, the remaining ink is available for printing.

- 1 Lift up the scanner unit until it locks into place, then open the ink cartridge cover.



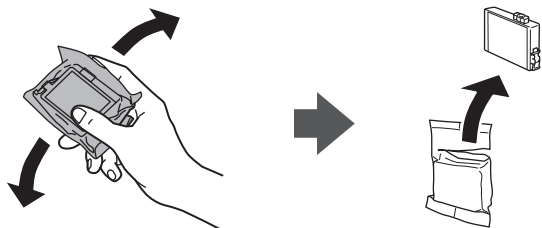
**Caution:** Do not touch the flat white cable.



\*413991600\*

**EPSON®**  
EXCEED YOUR VISION

- 2** Gently shake the ink cartridges, and remove them from the packaging.

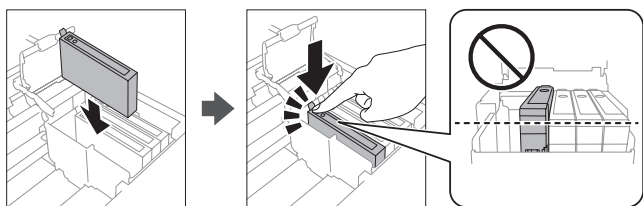


- 3** Remove only the yellow tape from each ink cartridge.

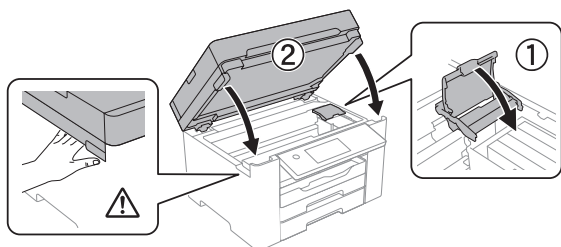


**Caution:** Do not remove any seals, or ink will leak. Do not touch the areas shown above. Doing so may prevent normal operation and printing.

- 4** Insert the cartridge in the holder for each color. Press each cartridge down until it clicks. Make sure all cartridges are pushed down into place.



- 5** Close the ink cartridge cover, then lower the scanner unit.



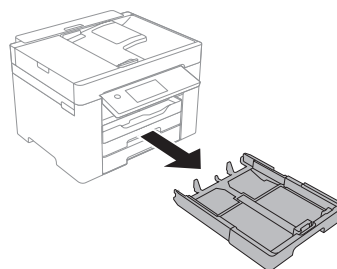
- 6** The product starts charging the ink. Ink charging takes approximately 5 minutes. When you see a completion message on the product's LCD screen, charging is complete.

**Caution:** Don't turn off the printer or raise the scanner unit while the printer is charging or you'll waste ink.

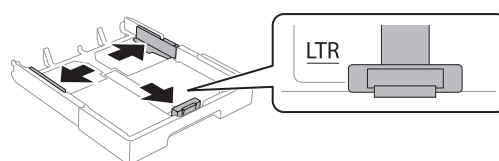
## 4 Load paper

See the online *User's Guide* for information about loading capacity, available paper types and sizes, loading envelopes, and using the rear paper feed slot or ADF.

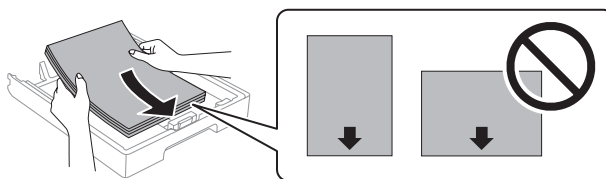
- 1** Make sure the product is done charging the ink, then pull out the paper cassette.



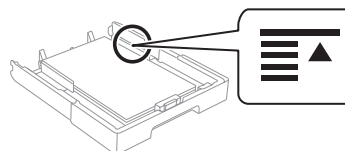
- 2** Slide the side edge guides all the way out and set the front edge guide to the paper size you are using.



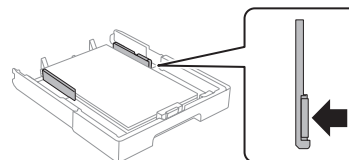
- 3** Insert paper with the glossy or printable side down.



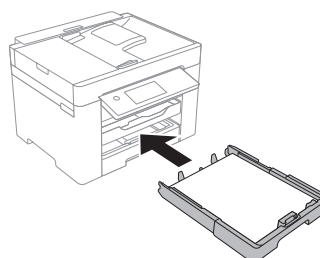
**Note:** Make sure the paper is under the arrow mark for your paper type and loaded against the front edge of the cassette.



- 4** Slide the edge guides against the paper, but not too tightly.



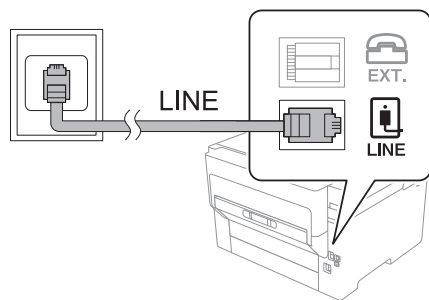
- 5** Keep the cassette flat as you insert it all the way.



- 6** Select the paper settings on the product's control panel.

## 5 Connect the fax line

- 1 Connect a phone cord to a telephone wall jack and to the **LINE** port on your product. See the online *User's Guide* for more information.



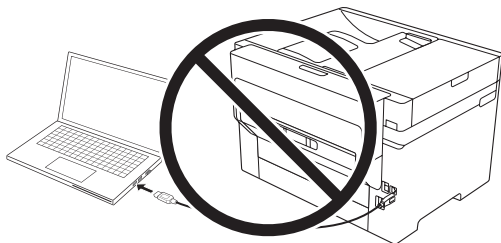
- 2 Select **Proceed** to set up the fax, or select **Close** to set it up later.

## 6 Install software

**Note:** An Internet connection is required to obtain the product software.

**Firmware Update Notice:** The printer is designed to work only with genuine Epson-branded cartridges. Other brands of ink cartridges and ink supplies are not compatible and, even if described as compatible, may not function properly or at all. Epson periodically provides firmware updates to address issues of security, performance, minor bug fixes and ensure the printer functions as designed. These updates may affect the functionality of third-party ink. Non-Epson branded or altered Epson cartridges that functioned prior to a firmware update may not continue to function.

- 1 Make sure the product is **NOT CONNECTED** to your computer.



**Windows®:** If you see a Found New Hardware screen, click **Cancel** and disconnect the USB cable.

- 2 Download and run your product's software package. For the latest software, visit:

[www.epson.com/support/ecc7000](http://www.epson.com/support/ecc7000) (U.S.)  
[www.epson.ca/support/ecc7000](http://www.epson.ca/support/ecc7000) (Canada)

- 3 Follow the instructions on the computer screen to run the setup program.

- 4 When you see the Select Your Connection screen, select one of the following and follow the on-screen instructions:

- **Wireless connection**

In most cases, the software installer automatically attempts to set up your wireless connection. If setup is unsuccessful, you may need to enter your network name (SSID) and password.

- **Direct USB connection**

Make sure you have a USB cable (not included).

- **Wired network connection**

Make sure you have an Ethernet cable (not included).

## Mobile printing and voice-activated printing

**Note:** You can connect your printer to your network with a smartphone or tablet using iOS or Android™. For instructions, see the online *User's Guide*.

- Print directly from a smartphone or tablet using iOS or Android with Epson iPrint™. Simply connect your printer and device to the same network and tap the action icon to select the print option.
- Print directly from your Android (v4.4 or later) device\*. Simply connect your printer and device to the same network and tap the menu icon to select the print option.
- Print remotely with Epson Connect™. See your online *User's Guide* for instructions or learn more at [www.epson.com/connect](http://www.epson.com/connect) (U.S.) or [www.epson.ca/connect](http://www.epson.ca/connect) (Canada).
- Use voice-activated assistants to print a variety of creative and everyday items from your Epson product. Simply add your product to an Epson Connect account, then link the account to a voice-activated assistant. See [www.epson.com/voice](http://www.epson.com/voice) (U.S.) or [www.epson.ca/voice](http://www.epson.ca/voice) (Canada) for more information.

\* May require the Epson Print Enabler or Mopria Print Service app from Google Play™.

## Any problems?

### Network setup was unsuccessful.

- Print a network connection report to identify network problems and solutions. See the online *User's Guide* for instructions.
- Make sure you select the right network name (SSID).
- If your network has security enabled, make sure you enter your network password (WEP key or WPA passphrase) correctly. Be sure to enter your password in the correct case.
- Restart your router (turn it off and then on), then try to connect to it again.
- If you see a firewall alert message, click **Unblock** or **Allow** to let setup continue.

### There are lines or incorrect colors in my printouts.

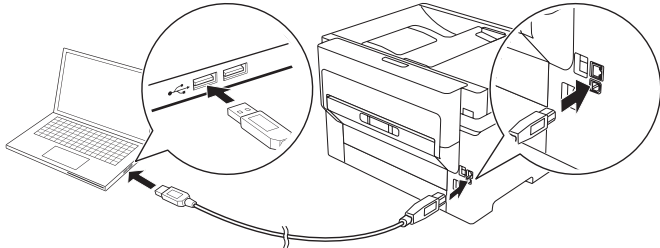
Run a nozzle check to see if there are any gaps in the printout. Then clean the print head, if necessary. See the online *User's Guide* for more information.

### The product's screen is dark.

Make sure your product is turned on, and touch the screen or press any button to wake it from sleep mode.

### Setup is unable to find my printer after connecting it with a USB cable.

Make sure your product is securely connected as shown:



## Any questions?

### User's Guide

**Windows:** Click the icon on your desktop or Apps screen to access the online *User's Guide*.

**Mac:** Click the icon in Applications/Epson Software/Guide to access the online *User's Guide*.

If you don't have a User's Guide icon, go to the Epson website, as described below.

### Videos

Visit [www.epson.com/support/ecc7000](http://www.epson.com/support/ecc7000) (U.S.) or [www.epson.ca/support/ecc7000](http://www.epson.ca/support/ecc7000) (Canada) and search for your product to view support videos (videos available only in English).

### Technical support

Visit [www.epson.com/support/ecc7000](http://www.epson.com/support/ecc7000) (U.S.) or [www.epson.ca/support/ecc7000](http://www.epson.ca/support/ecc7000) (Canada) and search for your product to download drivers, view videos and manuals, get FAQs, or contact Epson.

Call (562) 276-4382 (U.S.) or (905) 709-3839 (Canada), 6 AM to 8 PM, Pacific Time, Monday through Friday, and 7 AM to 4 PM, Pacific Time, Saturday. Days and hours of support are subject to change without notice. Toll or long distance charges may apply.

### Recycling

Epson offers a recycling program for end-of-life hardware and ink cartridges. Please go to [www.epson.com/recycle](http://www.epson.com/recycle) (U.S.) or [www.epson.ca/recycle](http://www.epson.ca/recycle) (Canada) for information on how to return your products for proper disposal.

## Need paper and ink?

Ensure brilliant results with Epson specialty and plain papers, engineered specifically for Epson printers. Find Epson papers and Epson Genuine Ink at [www.epson.com](http://www.epson.com) (U.S. sales) or [www.epson.ca](http://www.epson.ca) (Canadian sales) and at Epson authorized resellers. Call 800-GO-EPSON (800-463-7766).



DESIGNED for EXCELLENCE™

Epson printers, ink and specialty papers.

DURABrite Ultra INK

### EC-C7000 replacement ink cartridges

Color	Standard-capacity	High-capacity	Extra high-capacity
Black	812	812XL	812XXL
Cyan	812	812XL	–
Magenta	812	812XL	–
Yellow	812	812XL	–



EPSON and DURABrite are registered trademarks, EPSON Exceed Your Vision is a registered logomark, and Epson Connect and Epson iPrint are trademarks of Seiko Epson Corporation.

Designed for Excellence is a trademark of Epson America, Inc.

Windows is a registered trademark of Microsoft Corporation in the United States and/or other countries.

Mac is a trademark of Apple Inc., registered in the U.S. and other countries.

Android and Google Play are trademarks of Google LLC.

General Notice: Other product names used herein are for identification purposes only and may be trademarks of their respective owners. Epson disclaims any and all rights in those marks.

This information is subject to change without notice.