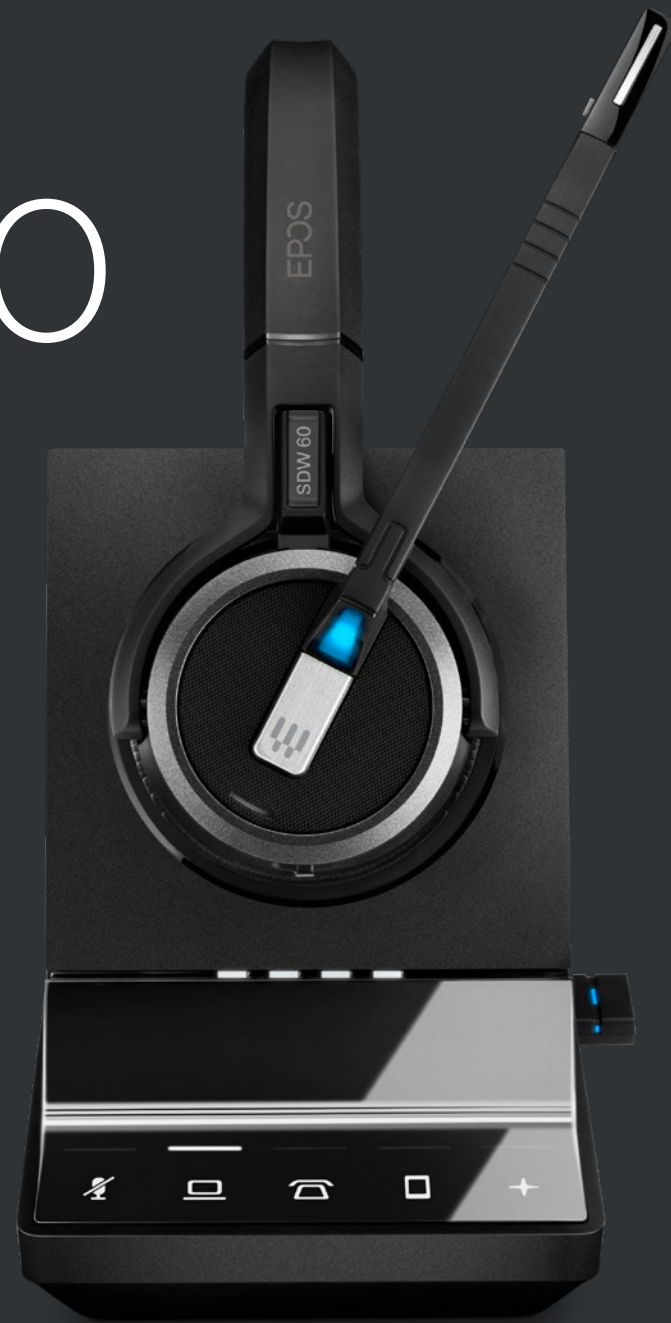


EPDS

US

# IMPACT 5000 Series

IMPACT 5000 Series is a wireless DECT headset for modern office professionals, providing next generation communication quality, future-proof device flexibility, all-day wearing comfort and advanced security to modern work environments.



# Key Features

## Get all-day wearing comfort

With soft leatherette ear pad and a choice of wearing styles for consistent comfort and well-being to increase efficiency

## Increase productivity and create focus

With clear busy light, noise dampening ear pads and easy call management

## Experience superior EPOS sound

With super wideband and advanced two microphone noise-cancelling system that meets Teams Open Office specifications

## Empower your people with total flexibility

One flexible headset that pairs easily to all devices with extensive wireless range up to 180 m/590 ft

## Ensure enhanced security for all your calls

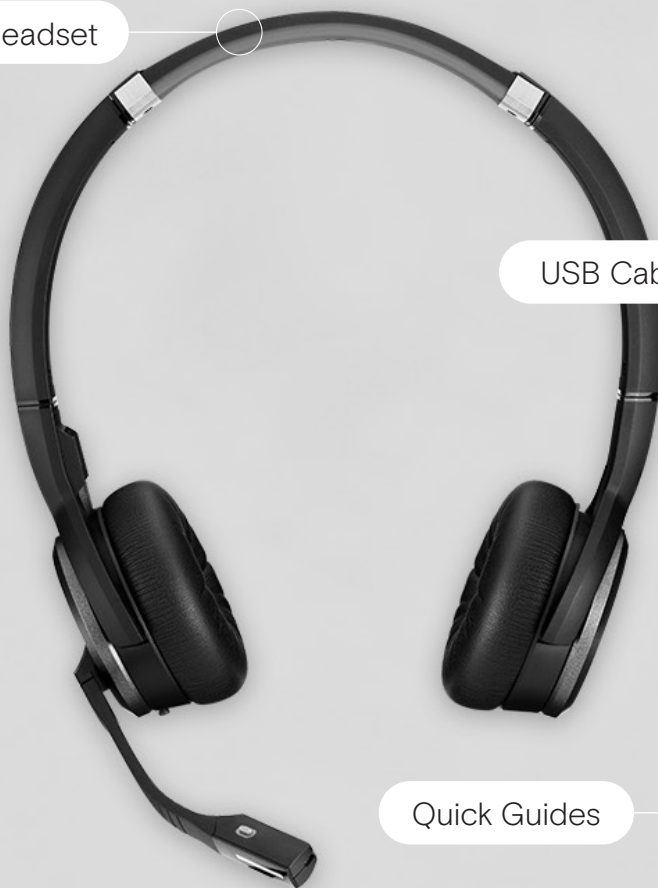
With Protected Pairing, 128-bit authentication and DECT Security certification

# What's in the Box

Base Station



Headset

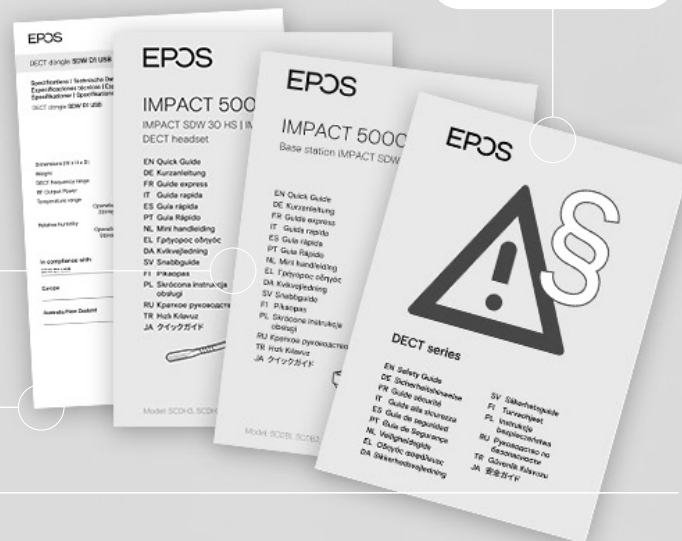


USB Dongle

USB Cable



Safety Guide



Quick Guides

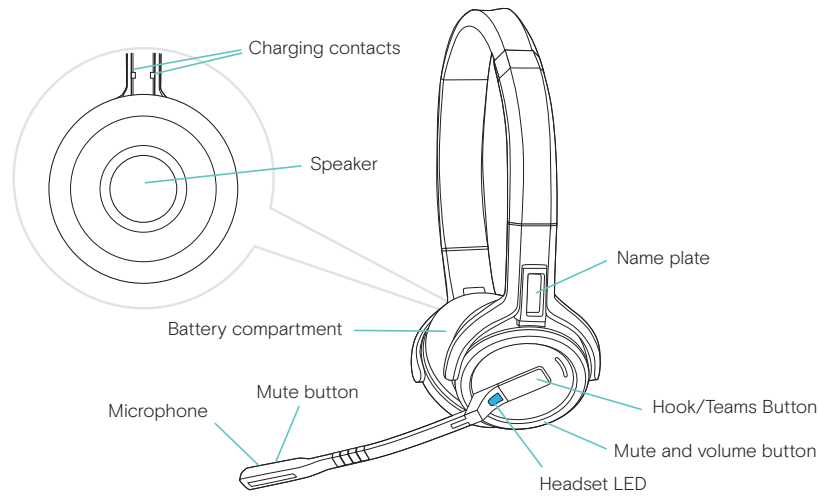
Compliance Sheet

Items in the box may vary depending on product variant and may include:

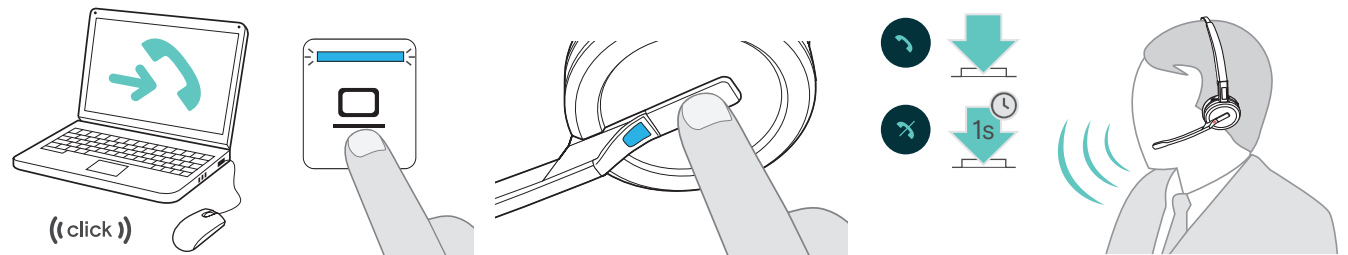
Power Suply

Audio Phone Cable

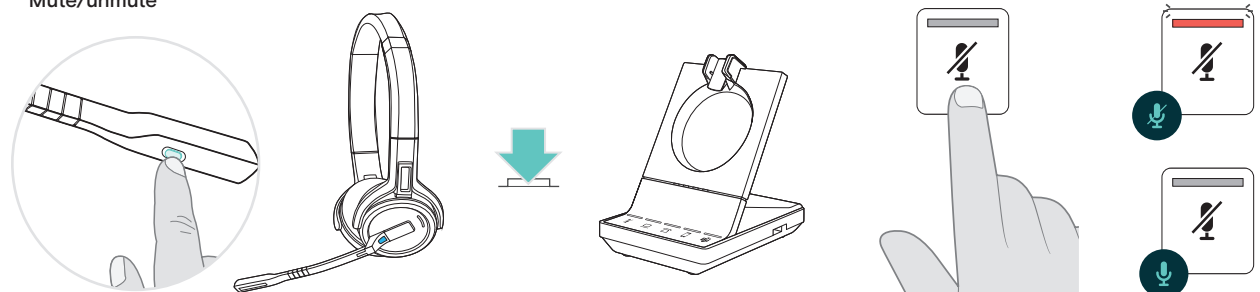
# How to Use the IMPACT 5000



## Accept/end a call



## Mute/unmute



# Additional benefits & features



## High-density wideband mode

Delivers crisp and natural sound for clear calls even in dense office environments.



## Triple connectivity

Stay connected to computer, desk phone, and mobile phone at the same time.



## Extended talk time

Have uninterrupted conversations for up to 14 hours in narrowband mode.



## Fast charging

Stay ready by getting up to 50% of battery charge in just 30 minutes.



## EPOS ActiveGard® technology

Prevent hearing loss or damage by protecting yourself from acoustic shock.



## Improved speech intelligibility

Be heard with a two-microphone noise-cancelling system and own-voice detection.



## EPOS Manager

Configure, manage, and monitor device usage remotely from a central admin portal



## 4-headset conferencing

Use the same base station to set up phone conferences for up to 4 headsets.



## Rich multimedia experience

Enjoy music and multimedia with exceptional quality stereo sound.

# Product data

1/6

## General

|                |  |
|----------------|--|
| Wearing style  | Single- and double-sided headset   |
| Headset weight | <b>501X:</b> 44 g / 1.55 oz (Ear hook version) 58 g / 2.05 oz (Headband version) 43 g / 1.52 oz (Neckband version)<br><b>503X:</b> 100 g / 3.52 oz<br><b>506X:</b> 136 g / 4.80 oz |
| DECT           | 1.920 to 1.930 MHz (US)  |
| Warranty       | 2 years  |

## Audio

|                               |  |
|-------------------------------|--|
| Speaker frequency response    | <b>501X:</b> 100 Hz - 11.0 kHz (Super wideband)<br>100 Hz - 7.5 kHz (Standard wideband and High density wideband)<br>150 Hz - 3.5 kHz (Narrowband)<br><b>503X:</b> 50 Hz - 11.5 kHz (Super wideband)<br>50 Hz - 7.5 kHz (Standard wideband and High density wideband)<br>150 Hz - 3.5 kHz (Narrowband)<br>20 Hz - 20 kHz (Fullband - music mode)<br><b>506X:</b> 150 Hz - 11.5 kHz (Super wideband)<br>150 Hz - 7.5 kHz (Standard wideband and High density wideband)<br>150 Hz - 3.5 kHz (Narrowband)<br>20 Hz - 20 kHz (Fullband - music mode) |
| Microphone type               | Digital MEMs microphones - two microphone noise-cancelling system for exceptional speech clarity   |
| Microphone frequency response | <b>501X:</b> 100 Hz - 11.0 kHz (Super wideband)<br>100 Hz - 7.5 kHz (Standard wideband and High density wideband)<br>150 Hz - 3.5 kHz (Narrowband)<br><b>503X:</b> 100 Hz - 11.0 kHz (Super wideband)<br>100 Hz - 7.5 kHz (Standard wideband and High density wideband)<br>150 Hz - 3.5 kHz (Narrowband)<br><b>506X:</b> 100 Hz - 11.0 kHz (Super wideband)<br>100 Hz - 7.5 kHz (Standard wideband and High density wideband)<br>150 Hz - 3.5 kHz (Narrowband)   |
| Noise cancellation            | Two microphone noise-cancelling system   |

# Product data

2/6

## Technical

### Charging time

**501X:** 0 - 50%: 30 minutes  
0 - 100%: 1 hour  
**503X:** 0 - 50 %: 30 minutes  
0 - 100 %: 1 hour and 30 min  
**506X:** 0 - 50 %: 30 minutes  
0 - 100%: 1 hour and 30 min.

### Standby time

**501X:** Up to 48 hours  
**503X/506X:** Up to 44 hours

### Talk time

**501X:** Up to 10 hours (Narrowband)  
Up to 7 hours (Density optimized wideband)  
Up to 8 hours (Wideband)  
Up to 6 hours (Super wideband)  
**503X:** Up to 14 hours (Narrowband)  
Up to 12 hours (Density optimized wideband)  
Up to 11,5 hours (Wideband)  
Up to 9 hours (Super wideband)  
**506X:** Up to 14 hours (Narrowband)  
Up to 12 hours (Density optimized wideband)  
Up to 11,5 hours (Wideband)  
Up to 9 hours (Super wideband)

### Range

Line of sight: 180 m / 590 ft  
Typical office building: 55 m / 180 ft

## Software

EPOS devices can be managed with following Software solutions:

### EPOS Connect

Conduct firmware updates and configure headsets for personal audio preferences.  
EPOS Connect works for Windows, Mac® and VDI/Thin client environments: [eposaudio.com/software-epos-connect](https://eposaudio.com/software-epos-connect)

### EPOS Manager

Manage, update and configure EPOS audio devices from any location.  
For both cloud and on-premises solutions: [eposaudio.com/software-epos-manager](https://eposaudio.com/software-epos-manager)

# Product data

3/6

| What's in the box | Product            | SDW 5013 | SDW 5015 | SDW 5016 | SDW 5033 | SDW 5035 | SDW 5036 | SDW 5063 | SDW 5065 | SDW 5066 |
|-------------------|--------------------|----------|----------|----------|----------|----------|----------|----------|----------|----------|
| Headset           | SDW 10 HS*         | ●        | ●        | ●        |          |          |          |          |          |          |
|                   | SDW 30 HS          |          |          |          | ●        | ●        | ●        |          |          |          |
|                   | SDW 60 HS          |          |          |          |          |          |          | ●        | ●        | ●        |
| Base Station      | SDW 3 BS           | ●        |          |          | ●        |          |          | ●        |          |          |
|                   | SDW 5 BS           |          | ●        | ●        |          | ●        | ●        |          | ●        | ●        |
| Dongle            | BTD 800 USB Dongle |          |          | ●        |          |          | ●        |          |          | ●        |
| Cables            | Power Supply       | ●        | ●        | ●        | ●        | ●        | ●        | ●        | ●        | ●        |
|                   | USB Cable          | ●        | ●        | ●        | ●        | ●        | ●        | ●        | ●        | ●        |
|                   | Audio Phone Cable  |          | ●        | ●        |          | ●        | ●        |          | ●        | ●        |

Quick Guide, Safety Guide and Compliance Sheet are included for all solutions

\* incl. 3-in-1 wearingstyle kit: headband, neckband, earhook and accessories



# Product data

4/6

| What's in the box | Product            | SDW 5013T | SDW 5016T | SDW 5033T | SDW 5036T | SDW 5063T | SDW 5066T |
|-------------------|--------------------|-----------|-----------|-----------|-----------|-----------|-----------|
| Headset           | SDW 10 HS*         | ●         | ●         |           |           |           |           |
|                   | SDW 30 HS          |           |           | ●         | ●         |           |           |
|                   | SDW 60 HS          |           |           |           |           | ●         | ●         |
| Base Station      | SDW 3 BS T         | ●         |           | ●         |           | ●         |           |
|                   | SDW 5 BS T         |           | ●         |           | ●         |           | ●         |
| Dongle            | BTD 800 USB Dongle |           | ●         |           | ●         |           | ●         |
| Cables            | Power Supply       | ●         | ●         | ●         | ●         | ●         | ●         |
|                   | USB Cable          | ●         | ●         | ●         | ●         | ●         | ●         |
|                   | Audio Phone Cable  |           | ●         |           | ●         |           | ●         |

Quick Guide, Safety Guide and Compliance Sheet are included for all solutions

\* incl. 3-in-1 wearingstyle kit: headband, neckband, earhook and accessories

# Product data

5/6

| Product                            | Wearing style | Connects to                                 | Certifications  | EAN code         | UPC code        |
|------------------------------------|---------------|---|---|------------------|-----------------|
| SDW 5066 - US<br>Art. no. 1000629  | Double-sided  | Desk phone, PC/Softphone,<br>mobile devices | Optimized for UC and certified for Webex,<br>Avaya, Alcatel-Lucent Enterprise, Enreach              | 57 14708 00430 1 | 8 40064 40430 3 |
| SDW 5066T - US<br>Art. no. 1001040 | Double-sided  | Desk phone, PC/Softphone,<br>mobile devices | Optimized for UC and certified<br>for Microsoft Teams   | 57 14708 00842 2 | 8 40064 40842 4 |
| SDW 5036 - US<br>Art. no. 1000625  | Single-sided  | Desk phone, PC/Softphone,<br>mobile devices | Optimized for UC and certified for Webex,<br>Avaya, Alcatel-Lucent Enterprise, Enreach              | 57 14708 00426 4 | 8 40064 40426 6 |
| SDW 5036T - US<br>Art. no. 1001038 | Single-sided  | Desk phone, PC/Softphone,<br>mobile devices | Optimized for UC and certified<br>for Microsoft Teams   | 57 14708 00840 8 | 8 40064 40840 0 |
| SDW 5016 - US<br>Art. no. 1000621  | Single-sided  | Desk phone, PC/Softphone,<br>mobile devices | Optimized for UC and certified for Webex,<br>Avaya, Alcatel-Lucent Enterprise, Enreach              | 57 14708 00422 6 | 8 40064 40422 8 |
| SDW 5016T - US<br>Art. no. 1001036 | Single-sided  | Desk phone, PC/Softphone,<br>mobile devices | Optimized for UC and certified<br>for Microsoft Teams   | 57 14708 00838 5 | 8 40064 40838 7 |
| SDW 5065 - US<br>Art. no. 1000605  | Double-sided  | Desk phone, PC/Softphone                    | Optimized for UC and certified for Google Meet,<br>Webex, Avaya, Alcatel-Lucent Enterprise, Enreach | 57 14708 00406 6 | 8 40064 40406 8 |
| SDW 5035 - US<br>Art. no. 1000601  | Single-sided  | Desk phone, PC/Softphone                    | Optimized for UC and certified for Webex,<br>Avaya, Alcatel-Lucent Enterprise, Enreach              | 57 14708 00402 8 | 8 40064 40402 0 |
| SDW 5015 - US<br>Art. no. 1000597  | Single-sided  | Desk phone, PC/Softphone                    | Optimized for UC and certified for Webex,<br>Avaya, Alcatel-Lucent Enterprise, Enreach              | 57 14708 00398 4 | 8 40064 40398 6 |
| SDW 5063 - US<br>Art. no. 1000593  | Double-sided  | PC/Softphone                                | Optimized for UC and certified for Webex,<br>Avaya, Alcatel-Lucent Enterprise, Enreach              | 57 14708 00394 6 | 8 40064 40394 8 |
| SDW 5063T - US<br>Art. no. 1001034 | Double-sided  | PC/Softphone                                | Optimized for UC and certified<br>for Microsoft Teams   | 57 14708 00836 1 | 8 40064 40836 3 |

# Product data

6/6

| Product                            | Wearing style | Connects to  | Certifications  | EAN code         | UPC code        |
|------------------------------------|---------------|--------------|---|------------------|-----------------|
| SDW 5033 - US<br>Art. no. 1000589  | Single-sided  | PC/Softphone | Optimized for UC and certified for Webex, Avaya, Alcatel-Lucent Enterprise, Enreach | 57 14708 00390 8 | 8 40064 40390 0 |
| SDW 5033T - US<br>Art. no. 1001032 | Single-sided  | PC/Softphone | Optimized for UC and certified for Microsoft Teams                                  | 57 14708 00834 7 | 8 40064 40834 9 |
| SDW 5013 - US<br>Art. no. 1000585  | Single-sided  | PC/Softphone | Optimized for UC and certified for Webex, Avaya, Alcatel-Lucent Enterprise, Enreach | 57 14708 00386 1 | 8 40064 40386 3 |
| SDW 5013T - US<br>Art. no. 1001030 | Single-sided  | PC/Softphone | Optimized for UC and certified for Microsoft Teams                                  | 57 14708 00832 3 | 8 40064 40832 5 |

# Spare parts & Accessories

1/1

| Product               | Art. no. | Description   | EAN code         | UPC code        |
|-----------------------|----------|---|------------------|-----------------|
| SDW 10 HS             | 1000631  | Single-sided headset with three wearing styles for SDW 501x and SDW 501xT | 57 14708 00432 5 | 8 40064 40432 7 |
| SDW 30 HS             | 1000632  | Single-sided headset for SDW 503x and SDW 503xT o                         | 57 14708 00433 2 | 8 40064 40433 4 |
| SDW 60 HS             | 1000633  | Double-sided headset for SDW 506x and SDW 506xT                           | 57 14708 00434 9 | 8 40064 40434 1 |
| SDW 3 BS - US         | 1000685  | Base station for SDW 5013, SDW 5033 and SDW 5063                          | 57 14708 00486 8 | 8 40064 40486 0 |
| SDW 3 BS T - US       | 1001044  | Base station for SDW 5013T, SDW 5033T and SDW 5063T                       | 57 14708 00846 0 | 8 40064 40846 2 |
| SDW 5 BS - US         | 1000681  | Base station for SDW 50x5 and 50x6 (without BTD 800 dongle)               | 57 14708 00482 0 | 8 40064 40482 2 |
| SDW 5 BS T - US       | 1001042  | Base station for SDW 5016T, SDW 5036T and SDW 5066T                       | 57 14708 00844 6 | 8 40064 40844 8 |
| BTD 800               | 1000227  | USB Bluetooth® Dongle   | 57 14708 00028 0 | 8 40064 40028 2 |
| CH 30                 | 1000702  | Headset charger stand   | 57 14708 00503 2 | 8 40064 40503 4 |
| CH 30 USB             | 1001143  | USB Charging Cable  | 57 14708 00945 0 | 8 40064 40945 2 |
| SDW D1 Accessory Pack | 1000982  | Carry pouch and USB-A charging cable for IMPACT 5000 headsets             | 57 14708 00784 5 | 8 40064 40784 7 |
| SDW D1 USB            | 1000299  | USB DECT dongle   | 57 14708 00100 3 | 8 40064 40100 5 |
| UI 10 BL              | 1000701  | Busylight   | 57 14708 00502 5 | 8 40064 40502 7 |
| PS - UNI 01           | 1000303  | Universal power supply  | 57 14708 00104 1 | 8 40064 40104 3 |

# Appendix

1/1

## Additional product data

|                                   |  |
|-----------------------------------|--|
| Ear pad size                      | <b>501X:</b> ø 53 mm / 2.09 in<br><b>503X:</b> ø 54,5 mm / 2.15 in<br><b>506X:</b> ø 54,5 mm / 2.15 in   |
| Personalization                   | Yes with nameplate on headset  |
| Speaker type                      | High-quality Neodymium Magnet Speaker for outstanding audio quality  |
| GAP compatible                    | Yes (Headset)  |
| BTD 800 USB dongle                | For more information please see <a href="https://eposaudio.com/btd-800-usb">eposaudio.com/btd-800-usb</a> (included in SDW 50x6 and SDW 50x6T) |
| USB-A port                        | Supports call handling with EPOS devices   |
| Temperature range                 | Operational: +5 °C to + 45 °C / +41 °F to +113 °F<br>Storage: -20 °C to + 70 °C / -4 °F to +158 °F   |
| Battery (lithium polymer)         | Exchangeable by service  |
| Listen time (music mode)          | Up to 9 hours (Fullband)   |
| Auto sleep mode when out of range | Yes, after 12 hours  |
| EPOS ActiveGard® technology       | Protect users against acoustic injury caused by sudden sound burst on the line   |
| Pairing intrusion protection      | Protected pairing  |
| Certification                     | DECT Security certified  |