

LOGITECH CRAYON

Setup Guide



logitech®



Crayon Setup Guide

PRODUCT SETUP

To start using Logitech Crayon, simply turn on and draw. No software downloads or pairing required. Here are some tips to get started:

1. Make sure you are using iPad Pro 12.9-inch (3rd gen), iPad Pro 11-inch, iPad Air (3rd gen), iPad mini (5th gen), or iPad (6th gen). These are the only devices that are compatible with Logitech Crayon.
2. Make sure iPad is updated to iOS 12.2 or above. To check your iOS version, go to iPad Settings → General → Software.
3. Disconnect any previously connected digital pencils, such as Apple Pencil®, prior to using Crayon by going to iPad Settings → Bluetooth → Select the device you want to disconnect. If you do not want to forget other digital pencils, simply turn your *Bluetooth*® off before using Crayon.
4. Press the power button for 1 second. If the LED turns green, you're ready to go. If LED turns red, charge Crayon before use.

SOFTWARE UPDATES

Updating the iOS on your iPad may affect your experience with Crayon. If you notice changes in functionality, simply follow these steps:

1. Download Logitech Crayon software update at <https://support.logitech.com/product/crayon-ipad/downloads>
2. Connect Logitech Crayon to laptop via lightning cable.
3. Follow the prompts to update software.

To get notifications about software updates, product tips, and more, visit <https://support.logitech.com/product/crayon-ipad/register>

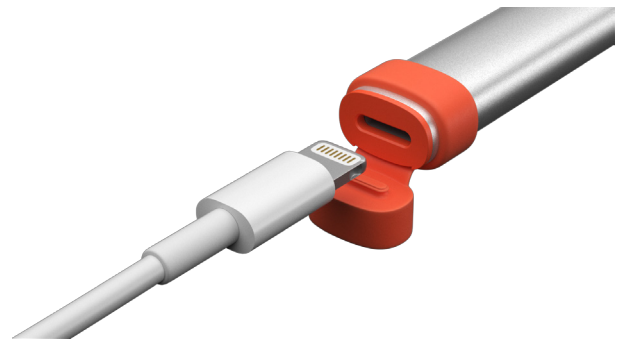
USE

Use with hundreds of Apple Pencil compatible apps, which are downloadable in the App Store. Logitech Crayon is not pressure sensitive, so there is no need to press down hard on the iPad. Just tilt for thicker or thinner lines.

HOW TO CHARGE

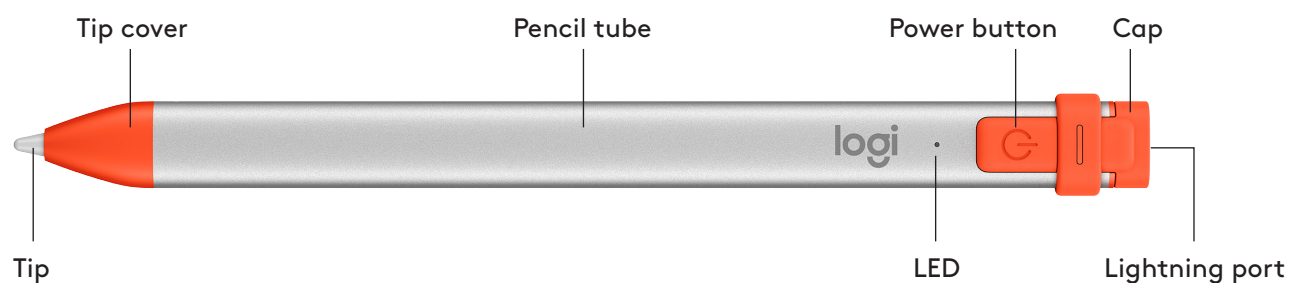
1. Flip open the cap.
2. Insert lightning cable.
3. Connect cable to a power adapter or computer to charge.
It takes about 30 minutes to charge Crayon from 0 to 100%.

Note: Crayon will not work while charging.



LED behavior	Logitech Crayon status
Fade in green	Power on
Fade out green	Power off
Solid green	Fully charged
Breathing green	Charging
Blinking red	Battery level is critical (less than 5%)
Red when user presses button	Battery level is low (less than 10%)
Green when user presses button	Battery level is good
Yellow	Firmware update

KNOW YOUR PRODUCT



REPLACEABLE PARTS

The tip can be damaged if Logitech Crayon is dropped and will also wear down with use. If either of these occur, the tip will need to be replaced to avoid damaging the screen.

Replacement tip covers and caps can be purchased at <https://support.logitech.com/product/crayon-ipad/spare-parts>

Replacement tips can be purchased at <https://www.logitech.com/product/crayon-replacement-tip>

CARE AND STORAGE TIPS

- To preserve battery, power Crayon off when you are done using it. If you forget, Crayon will automatically shut off after 30 minutes of being idle.
- Though Crayon is designed with 4-foot drop protection, avoid drops as this might damage the tip of your Crayon or the electronics inside.
- Do not leave the cap open as dirt, dust, and other foreign objects can get inside the charging port.
- If you need to clean Crayon, spray a cloth with water or a gentle cleaner (less than 15% alcohol) until it's damp (not soaked), and wipe the surface of the Crayon. Avoid getting moisture in the charging port, and make sure Crayon is completely dry before storing.