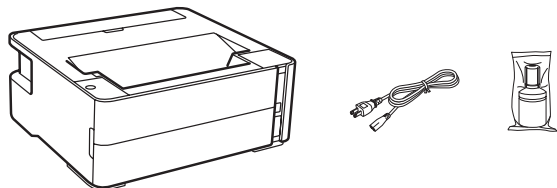


# ST-M1000 Start Here

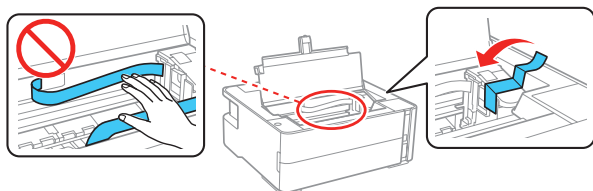
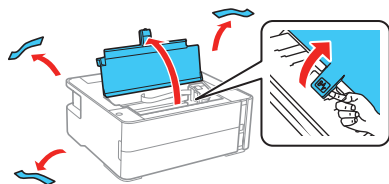
**IMPORTANT:** Before using this product, make sure you read these instructions and the safety instructions in the online *User's Guide*.

## 1 Unpack



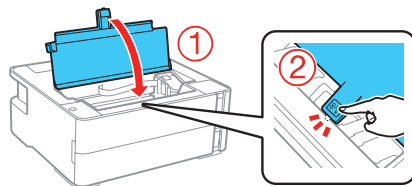
**Note:** Do not open the ink bottle until you are ready to fill the ink tank. The ink bottle is vacuum packed to maintain reliability.

1 Remove all protective materials from the product.



**Caution:** Do not touch the flat white cable, translucent film, or the ink tubes.

2 Close the printer cover until it clicks.



**Note:** Do not connect the power cord yet.

## 2 Fill ink tank and charge the ink

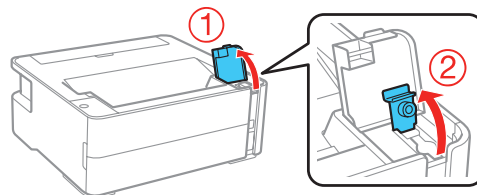
**Warning:** Keep the ink bottle out of the reach of children and do not drink the ink.

**Caution:** This product requires careful handling of ink. If ink spills, wipe it off immediately with a damp towel to avoid permanent stains. If ink gets on your clothes or belongings, it may not come off.

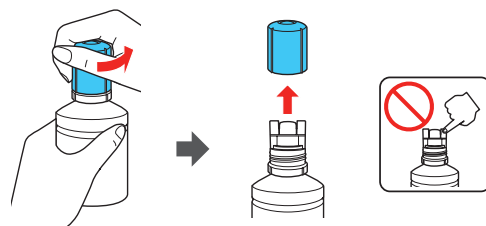
**Note:**

- Epson cannot guarantee the quality or reliability of third-party ink.
- Use the ink bottle included with the printer to set up the product. Part of the ink will be used to charge the print head. This bottle may print fewer pages compared with replacement ink bottles.

1 Open the ink tank cover, then open the cap.

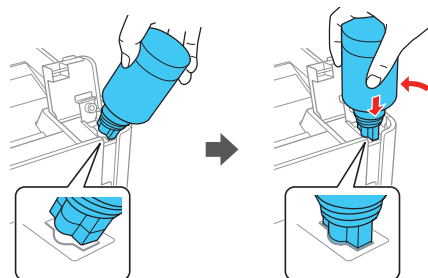


2 Unpack the ink bottle. Hold the ink bottle upright and slowly turn the bottle cap to remove it.



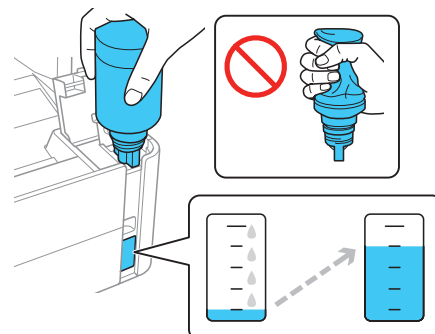
**Caution:** Do not shake or squeeze the ink bottle. Do not touch the top of the ink bottle after its cap is removed.

3 Insert the ink bottle into the filling port, as shown below.



**Note:** Do not force the bottle into position.

4 Wait for the ink to fill the tank. Do not squeeze the bottle.



**Note:** If ink does not flow from the bottle, lift and reinsert the bottle.

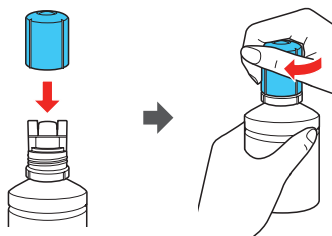


\*413799700\*

**EPSON**  
EXCEED YOUR VISION

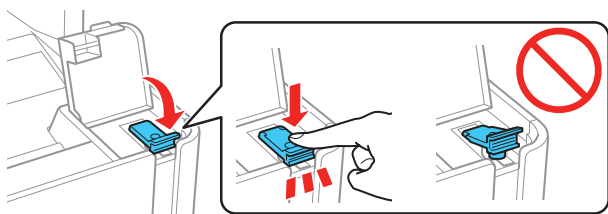
**Caution:** After setup, periodically inspect the ink level to ensure it is not below the lowest line on the tank. Prolonged use when ink is below the lowest line could damage the product. See the online *User's Guide* for refilling instructions.

- 5 When the ink bottle is empty, remove the bottle and securely close it with the cap.

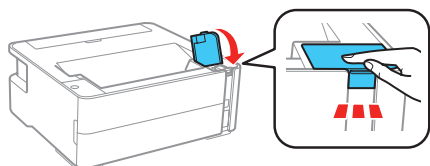


**Note:** Do not leave the ink bottle inserted; otherwise the bottle may be damaged or ink may leak.

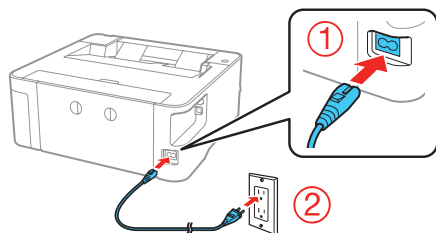
- 6 Close the ink tank cap.



- 7 Close the ink tank cover.

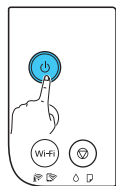


- 8 Connect the power cord to the back of the product and to an electrical outlet.



**Caution:** Do not connect to your computer yet.

- 9 Press the power button to turn on the product, then wait for the power light to stop flashing.



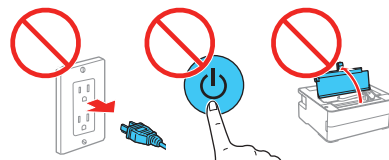
- 10 Press and hold the stop button for 5 seconds until the power light starts to blink and ink charging begins.



**Note:** Ink charging takes about 10 minutes. When the power light stops flashing, ink charging is complete.



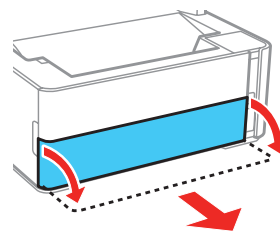
**Caution:** Do not turn off the product, open the printer cover, or load paper while the product is charging or you'll waste ink.



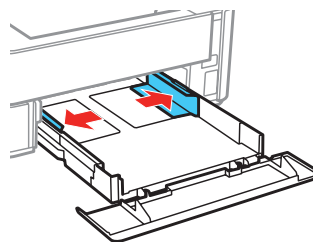
## 3 Load paper

See the online *User's Guide* for information about loading capacity, available paper types and sizes, loading envelopes, and using the rear feed slot.

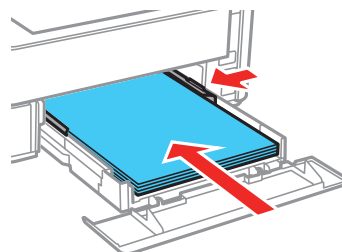
- 1 Make sure the product is done charging the ink. Open the paper cassette cover and pull out the paper cassette until it stops.



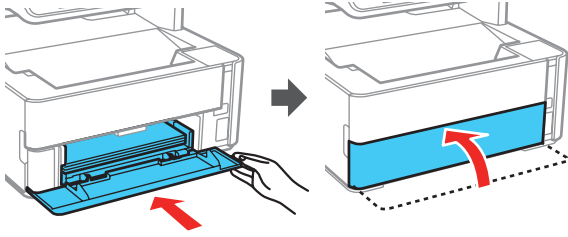
- 2 Slide the edge guides all the way out.



- 3 Insert paper with the printable side down and slide the edge guides against the paper, but not too tightly.



- 4 Keep the cassette flat as you insert it all the way and then close the paper cassette cover.



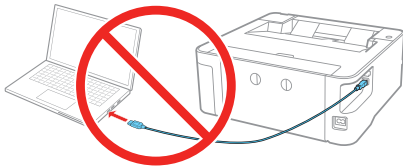
**Note:** Make sure the paper is loaded against the front of the cassette.

## 4 Install software

**Note:**

- An Internet connection is required to obtain the product software.
- To print from a Chromebook™, go to [www.epson.com/support/gcp](http://www.epson.com/support/gcp) (U.S.) or [www.epson.ca/support/gcp](http://www.epson.ca/support/gcp) (Canada) for instructions.

- 1 Make sure the product is **NOT CONNECTED** to your computer.



**Windows®:** If you see a Found New Hardware screen, click **Cancel** and disconnect the USB cable.

- 2 Download and run your product's software package:

[www.epson.com/support/stm1000](http://www.epson.com/support/stm1000) (U.S.)  
[www.epson.ca/support/stm1000](http://www.epson.ca/support/stm1000) (Canada)

- 3 Follow the instructions on the computer screen to run the setup program.

- 4 When you see the Select Your Connection screen, select one of the following:

- **Wireless connection**

In most cases, the software installer automatically attempts to set up your wireless connection. If setup is unsuccessful, you may need to enter your network name (SSID) and password.

- **Direct USB connection**

Make sure you have a USB cable (not included) ready.

- **Wired network connection**

Make sure you have an Ethernet cable (not included).

### PCL driver

Download the software and see your online *User's Guide* for instructions.

[www.epson.com/support/stm1000](http://www.epson.com/support/stm1000) (U.S.)  
[www.epson.ca/support/stm1000](http://www.epson.ca/support/stm1000) (Canada)


## Mobile and voice-activated printing

- Print directly from your iOS device. Simply connect your printer and device to the same network and tap the action icon to select the print option.
- Print directly from your Android™ (v4.4 or later) device\*. Simply connect your printer and device to the same network and tap the menu icon to select the print option.
- Print from wherever you are, next to your printer or remotely, with Epson Connect™ and Google Cloud Print™. Learn more at [www.epson.com/connect](http://www.epson.com/connect) (U.S.) or [www.epson.ca/connect](http://www.epson.ca/connect) (Canada).
- Use voice-activated assistants to print a variety of creative and everyday items from your Epson® product. Simply add your product to an Epson Connect account, then link the account to a voice-activated assistant. See [www.epson.com/voice](http://www.epson.com/voice) (U.S.) or [www.epson.ca/voice](http://www.epson.ca/voice) (Canada) for more information.

\* May require the Epson Print Enabler or Mopria Print Service app from Google Play™.

## Any problems?

### Network setup was unsuccessful

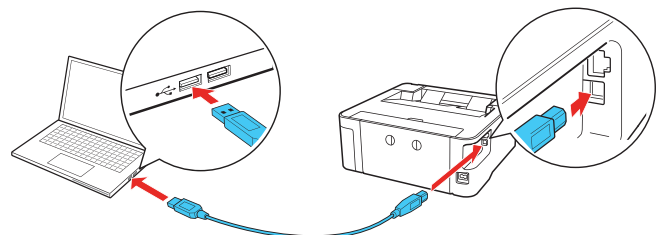
- Press the  button to print a network connection report. For more detailed information, hold this button down for at least 5 seconds to print a network status sheet.
- Make sure you select the right network name (SSID).
- Restart your router (turn it off and then on), then try to connect to it again.
- The printer can only connect to a network that supports 2.4 GHz connections. If your router offers both 2.4 GHz and 5 GHz connections, make sure 2.4 GHz is enabled.
- If you see a firewall alert message, click **Unblock** or **Allow** to let setup continue.
- If your network has security enabled, make sure you enter your network password (WEP key or WPA passphrase) correctly. Be sure to enter your password in the correct case.

### There are lines or incorrect colors in my printouts.

Run a nozzle check to see if there are any clogged nozzles. Then clean the print head, if necessary. See the online *User's Guide* for more information.

### Setup is unable to find my product after connecting it with a USB cable.





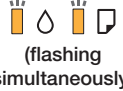

Make sure your product is on and securely connected as shown:



## Error indicators

If you see one of the error indicators below, follow the steps here to proceed:

 **Flashing**  **On**

	Wi-Fi connection error has occurred. Press the <b>Wi-Fi</b> button to clear the error and try again.
	Initial ink charging may not be complete. See the “Fill ink tank and charge the ink” section.
	No paper is loaded. Load paper and press the  stop button.
 (flashing simultaneously)	The printer cover is open. Close the printer cover until it clicks.
	A printer error has occurred. Open the printer cover and remove any paper inside the product. Turn the product off and on again.

If you see an error that is not listed here, see your online *User's Guide*.

## Any questions?

### User's Guide

**Windows:** Click the icon on your desktop or Apps screen to access the online *User's Guide*.

**Mac:** Click the icon in Applications/Epson Software/Guide to access the online *User's Guide*.

If you don't have a User's Guide icon, go to the Epson website, as described below.

### Videos

Visit [www.epson.com/support/stm1000videos](http://www.epson.com/support/stm1000videos) (U.S.) or [www.epson.ca/support/stm1000videos](http://www.epson.ca/support/stm1000videos) (Canada) to view support videos.

### Technical support

Visit [www.epson.com/support/stm1000](http://www.epson.com/support/stm1000) (U.S.) or [www.epson.ca/support/stm1000](http://www.epson.ca/support/stm1000) (Canada) to download drivers, view manuals, get FAQs, or contact Epson.

Call (562) 276-7202 (U.S.) or (905) 709-2567 (Canada), 6 AM to 8 PM, Pacific Time, Monday through Friday, and 7 AM to 4 PM, Pacific Time, Saturday. Days and hours of support are subject to change without notice. Toll or long distance charges may apply.

### Recycling

Epson offers a recycling program for end of life hardware and ink bottles. Please go to [www.epson.com/recycle](http://www.epson.com/recycle) (U.S.) or [www.epson.ca/recycle](http://www.epson.ca/recycle) (Canada) for information on how to return your products for proper disposal.

## Need paper and ink?


Ensure brilliant results with Epson specialty and plain papers, engineered specifically for Epson printers. Find Epson papers and Epson Genuine Ink at [www.epson.com](http://www.epson.com) (U.S. sales) or [www.epson.ca](http://www.epson.ca) (Canadian sales) and at Epson authorized resellers. Call 800-GO-EPSON (800-463-7766).



DESIGNED *for* EXCELLENCE™

Epson printers, ink and specialty papers.

### ST-M1000 replacement ink

Color	Part number
 Black	532



EPSON is a registered trademark, EPSON Exceed Your Vision is a registered logomark, and Epson Connect is a trademark of Seiko Epson Corporation.

Designed for Excellence is a trademark of Epson America, Inc.

Mac is a trademark of Apple Inc., registered in the U.S. and other countries.

Windows is a registered trademark of Microsoft Corporation in the United States and/or other countries.

Android, Google Cloud Print, Chromebook, and Google Play are trademarks of Google LLC.

General Notice: Other product names used herein are for identification purposes only and may be trademarks of their respective owners. Epson disclaims any and all rights in those marks.

This information is subject to change without notice.

© 2019 Epson America, Inc., 3/19