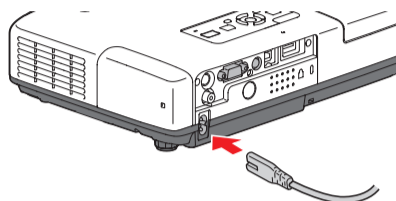


PowerLite® 1725/1735W Quick Setup

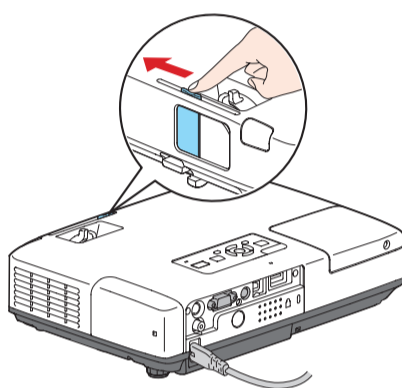
1 Turn On Your Equipment

Before using the projector, make sure you read the safety instructions in the *User's Guide* on your projector CD.

- 1 Connect the power cord to the back of the projector and plug the other end into an electrical outlet.

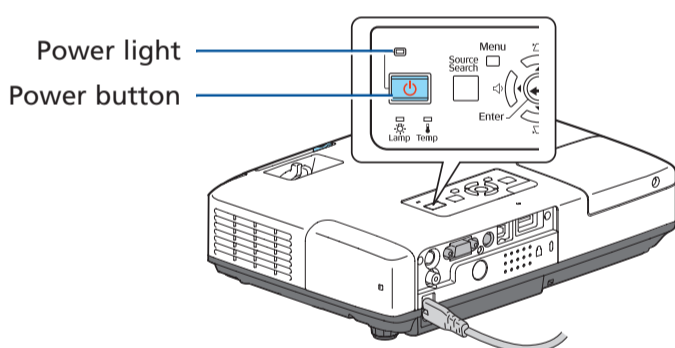


- 2 Open the **AV Mute** slide (lens cover). Make sure the slide is opened completely.



- 3 Remove the battery cover on the remote control. Locate the two AA batteries that came with the projector and insert them. Then replace the battery cover.

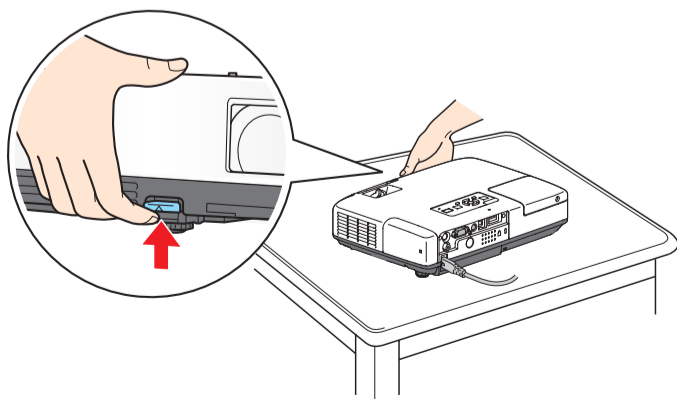
- 4 To turn the projector on, press the **Power** button on the projector or the remote control. The projector beeps once, and the projector's **Power** light flashes green and then stays on.



To shut down the projector, press the **Power** button twice and simply unplug it. You don't have to wait for the projector to cool off.

2 Adjust the Image

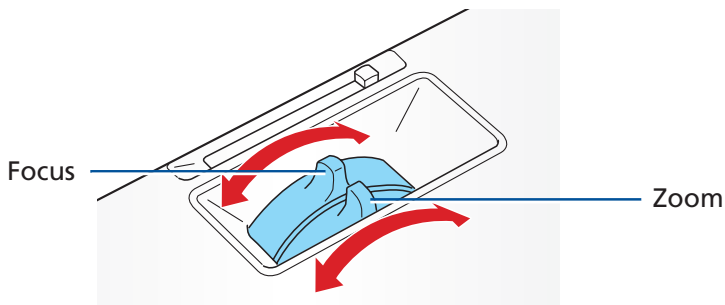
- 1 To raise the image, press the foot release button for the front adjustable foot and lift the front. Release the button to lock the foot in position.









411482900

2 Turn the focus ring to sharpen the image.

Turn the zoom ring to reduce or enlarge the image.



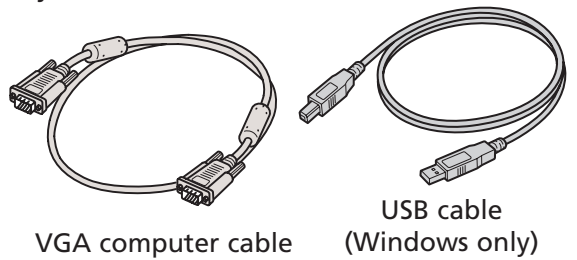
3 If your image looks like  or , you've placed the projector off to one side of the screen at an angle. Place it directly in front of the screen, facing the screen squarely.

4 If your image looks like  or , press the  or  buttons on the projector to correct it.

3 Choose a Presentation Method

How do you want to get images to the projector?

- To connect to a notebook, see "If connecting to a notebook" below.
- To project over a wireless network, see "If projecting wirelessly" on the back of this sheet.
- To give a presentation stored on a flash drive, digital camera, or other USB storage device, see the *EasyMP Operation Guide* on your projector CD.




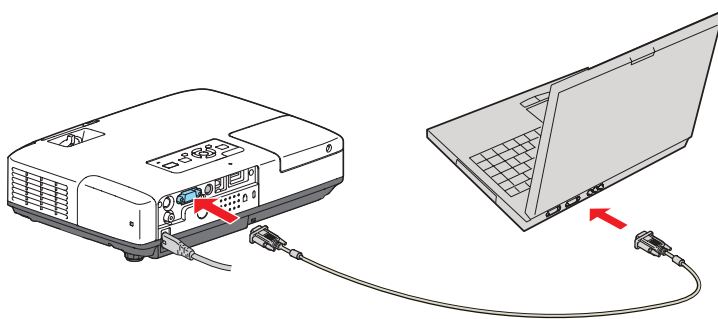
If connecting to a notebook...


1 Turn on the projector and adjust the image as described in sections 1 and 2 of this sheet.

2 Do one of the following:

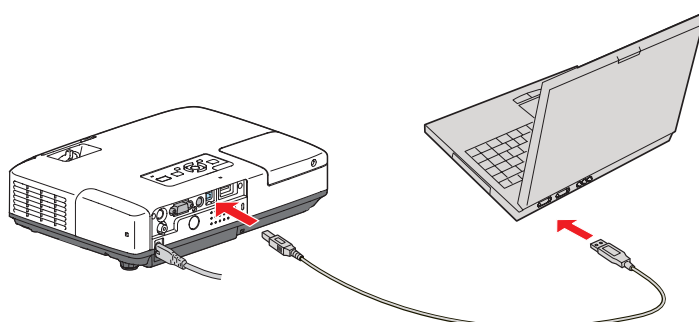
- Connect one end of the VGA computer cable to the projector's blue **Computer (Component Video)** port.

Connect the other end to your notebook's video-out port or  monitor port. Switch your notebook to external display.




- Connect the square end of the USB cable to the projector's  Type B (square) USB port.

Connect the flat end of the USB cable to any available USB port on your notebook (Windows® only). Click **Agree** to install a one-time driver file.



Turn over

- 3** If your projector and notebook don't display an image, do the following:

Windows: Hold down the **Fn** button on the keyboard and press the **CRT/LCD** or  function key. If this doesn't work, double-click **Display** in the Windows Control Panel. In Windows Vista®, right-click on the desktop and select **Personalize**, then select **Display Settings**. Make sure both the LCD screen and monitor port are enabled. See your Windows online help for details.

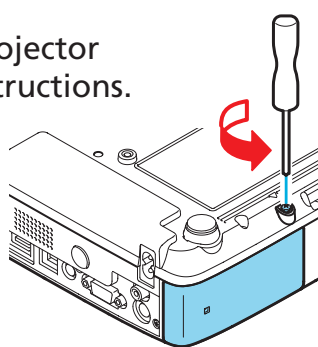
Mac OS® X: From the **Apple®** menu, select **System Preferences**, then click **Display** or **Displays**. Click **Detect Display**. Select the **VGA Display** or **Color LCD** dialog box, click the **Arrangement** (or **Arrange**) tab, and make sure **Mirror Displays** is checked.

If projecting wirelessly...

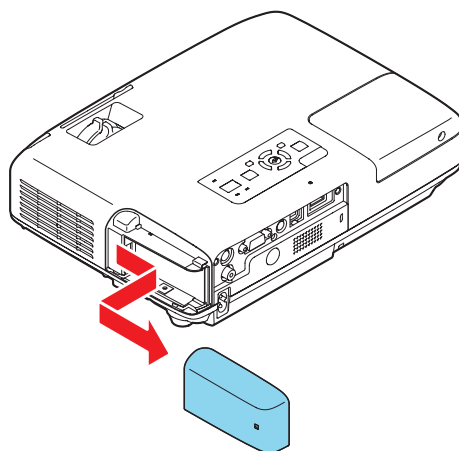
Follow the steps in this section to project over an 802.11g, 802.11b, or 802.11a wireless network from a computer running Windows 2000, XP, or Windows Vista, or Mac OS X 10.3 or later. Your computer must have a wireless card or built-in wireless interface.

You can also project wirelessly by using the Network Projector function in Windows Vista. See the *User's Guide* for instructions.

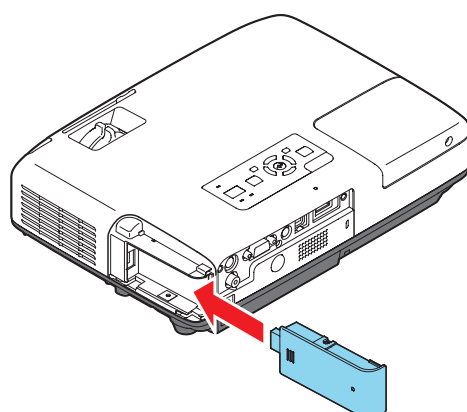
- 1** Turn the projector over and unscrew the wireless module cover.



- 2** Remove the wireless module cover.




- 3** Install the wireless LAN module. Then replace the cover and screw.

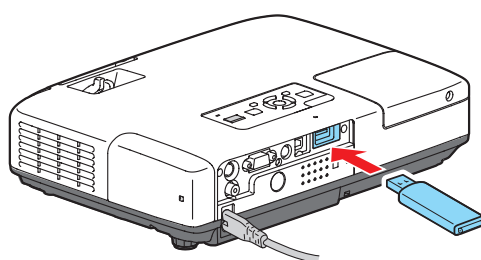


- 4** Turn on the projector and adjust the image as described in sections 1 and 2 on the front of this sheet.

- 5** Do one of the following:

- To use Quick Wireless Connection, follow the steps below (Windows only).
- To use EasyMP®, see "Using EasyMP" (Windows and Mac OS).

- 6** Connect the USB key (located in a pocket inside the projector's case) to the projector's  Type A (flat) USB port.



- 7** When you see a projected message that the network information update is complete, remove the USB key.

- 8** Connect the USB key to a USB port on your Windows computer or notebook.

If you see the AutoPlay window in Windows Vista, select **Run Launch U3.exe**. Then select **Allow**.

- 9** When you see a license agreement, click **Agree** to install the Quick Wireless Connection driver. If you see a Firewall message, select **Yes** to disable the Firewall. After a few moments, your computer display is projected. **If not, restart your computer.**

- 10** When you're done with your presentation, remove the USB key.

Using EasyMP

NOTE: You must have already installed the projector's EasyMP (EMP NS Connection) software and configured your projector and computer. See the EasyMP Operation Guide for instructions.

1 Select EasyMP as the source by pressing the **EasyMP** button on the remote control.

2 **Windows:** From the Start menu, select **Programs** or **All Programs** > **EMP NS Connection**.

Mac OS X: Double-click the **EMP NS Connection** icon in your Applications folder.

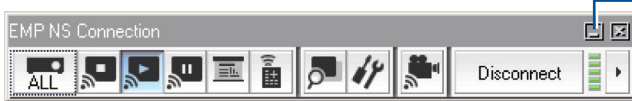
3 Select **Quick Connection Mode** and click **OK**.

4 Once the name of your projector appears, select it and click **Connect**.

If a projector is in use and is "locked" to prevent interruption, you won't be able to select it.

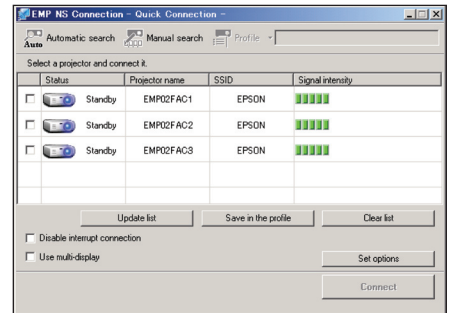
5 If you see a message asking for a keyword, enter the four digits that appear on the EasyMP Network Screen and click **OK**.

You see the image on your monitor transmitted to the projector, and a floating control bar appears on the computer screen:



Click here to minimize

6 When you're done with your presentation, click **Disconnect** on the control bar.



Where To Get Help

For more information about using the projector, install the manuals from your projector CD.

Telephone Support Services

To use the Epson PrivateLine® Support service, call (800) 637-7661 and enter the PIN on the Epson PrivateLine Support card that came with your projector. This service is available 6 AM to 6 PM, Pacific Time, Monday through Friday, for the duration of your warranty period. You may also speak with a projector support specialist by dialing one of these numbers:

U.S.: (562) 276-4394, 6 AM to 6 PM, Pacific Time, Monday through Friday

Canada: (905) 709-3839, 6 AM to 6 PM, Pacific Time, Monday through Friday

Days and hours of support are subject to change without notice. Toll or long distance charges may apply.

Internet Support

Visit Epson's support website at epson.com/support and select your product for solutions to common problems. You can download utilities and documentation, get FAQs and troubleshooting advice, or e-mail Epson with your questions.

Visit <http://www.presentersonline.com> to access tips, templates, and training for developing successful presentations.

Register today to get product updates, special promotions, and customer-only offers. You can use the registration card or CD included with your projector, or register online at www.epson.com/webreg.

EPSON®
EXCEED YOUR VISION



Epson and EasyMP are registered trademarks and Epson Exceed Your Vision is a registered logomark of Seiko Epson Corporation. PowerLite and PrivateLine are registered trademarks of Epson America, Inc.

General Notice: Other product names are for identification purposes only and may be trademarks of their respective owners. Epson disclaims any and all rights in those marks.

This information is subject to change without notice.

© 2008 Epson America, Inc. 5/08 CPD-25576

Printed in XXXXXX