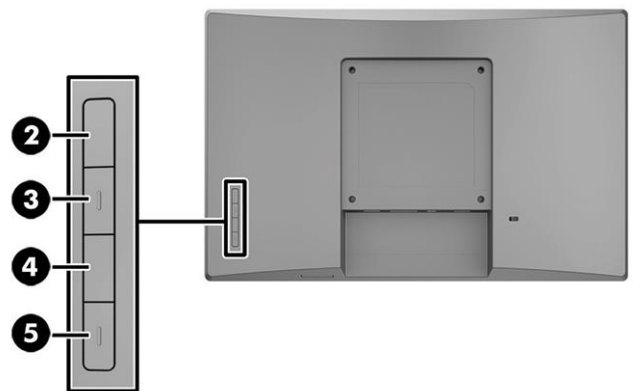
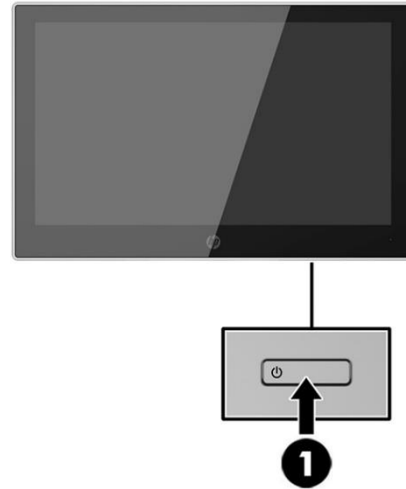


Overview

HP L7010t 10.1 in Retail Touch Monitor



(Monitor stand and additional monitor sold separately; not included)

1. Power button
2. OSD Controls – OK button
3. OSD Controls – Plus “+” button
4. OSD Controls – Minus “-” button
5. Menu button

Overview

Model

HP L7010t 10.1-in Retail Touch Monitor

T6N30AA

Introduction

The HP L7010t 10.1-in Retail Touch Monitor employs projective capacitive touch technology and is specifically designed to be used with the HP Retail Point of Sale systems. Complete your retail solution with the HP L7010t Touch Monitor, an eye-catching, virtually borderless, edge to edge glass, thin and light widescreen display that gives customers easily readable price, product, and order information, and supports interactive touch to allow quick movement between applications.

Key Benefits

- Projective capacitive touch technology delivers an intuitive, familiar multi-touch experience that's similar to that of smartphone and tablet devices
 - The 10.1-inch diagonal display delivers optimal 16:9 widescreen viewing for the latest retail and hospitality software
 - Place the sleek sturdy display where you need it with a VESA mount that supports flexible positioning as a customer facing display connected to HP's RP9 system or as a stand-alone display on a stand, or wall.
 - The edge-to-edge, bezel-less glass is dust-resistant and easy to clean
 - Designed to work with HP Retail Point of Sale systems to deliver a complete retail solution
-

Compatibility

The HP L7010t 10.1-in Retail Touch Monitor is recommended to work with HP RP9, HP RP5, HP RP5800 systems, HP Desktop Mini, and HP Desktops.

NOTE: Not all HP Retail system models are available in all regions.

Service and Support

Your HP Peripheral Limited Warranty is a three (3) year advanced exchange parts replacement warranty.

Technical Specifications

General	Display Size (diagonal)	10.1 inch
	Display Type	ADS w/LED backlight
	Native Resolution	1280x800@60Hz
	Aspect Ratio	16:10
	Brightness	220 nits (with glass)
	Static Contrast Ratio - Typical	800:1
	Dynamic Contrast Ratio (DCR)	N/A
	Pixel Pitch	0.0565(H)mmx 0.1695(V)mm
	Pixels Per Inch (PPI)	149
	Backlight Lamp Life	15,000 hrs (Min.)
	Anti-Glare Panel	Yes
	BrightView Panel	No
	Response Time	30 ms on/off (typ.)
	Color Gamut	50%
	Color Support	16.7M colors
	Horizontal Viewing Angle (typical CR>10)	160 degrees
	Vertical Viewing Angle (typical CR>10)	160 degrees
	3D Vertical Viewing Angle	N/A
	Panel Active Area	216.96mm x 135.6mm
	Preset Graphic Modes/Supported Resolutions	1280 X 800 @ 60 Hz 1280 X 720 @ 60 Hz 1024 X 768 @ 60 Hz 800 X 600 @ 60 Hz 720 X 400 @ 70 Hz 640 X 480 @ 60 Hz
	Maximum Resolution	1280x800@60Hz
	Recommended Resolution	1280x800@60Hz
	Vertical Scan Range	50 to 76 Hz
	Horizontal Scan Range	24 to 80 kHz
	Default Color Temperature	6500K
	Maximum Pixel Clock Speed	110 MHz
	Exterior Color of Monitor Bezel and Stand	HP Logo (front) PMS Cool Gray 10c Rear cover: Asteroid Front Cover: HP Black
	Plug & Play	Yes
	Tilt	-5 to +135 degrees
	Swivel	N/A
	Pivot	N/A
	Security Lock Ready	N/A
	Height Adjustment	N/A
	Height Adjustment Range	N/A
	Detachable Base	Yes

Technical Specifications

	Warranty	3 years
	Webcam	N/A
	Speaker Output Power	N/A
	VESA Mounting	Yes
Touch Specifications	Touch Panel Type	Projected Capacitive Touch > 10 points
	Positional Accuracy	±1.0 mm for all areas of touchable active area
	Resolution Accuracy	4096 x 4096
	Optical Light Transmission (per ASTM D1003)	Normal Glass: ≥85%
	Electrostatic Projection (pr EN6100-4-2, 1955)	Air +/- 8kv, contact +/-4k
On Screen Display (OSD)	On Screen Display User Controls	Brightness, Contrast, Input Control, Color, Image Control, Power Control, Menu Control, Management, Language, Information, Factory Reset, Exit
	User Programmable Modes	Yes, 8
	Monitor Control Buttons or Switches	Brightness, Color Control, Information, Menu
	Audio Controls	N/A
	Languages	10(German, Simplified Chinese, Traditional Chinese, Japanese, English, Spanish, French, Italian, Netherlands, Brazilian Portuguese)
Input Connectors	(1) DisplayPort 1.2, HDCP Support	
Power	Power Supply	External Power Supply
	Power Source	100-240VAC 50/60Hz
	Power Consumption - Maximum	8.5W
	Energy Saving/Standby Mode	<0.5W
	Power Consumption - Typical	5.8W
	Power Cable Length	1.83m
	Operational Mode at 100 VAC	20.72KWh
	Operational Mode at 115 VAC	20.72KWh
	Operational Mode at 230 VAC	20.72KWh
	Operating Conditions	Operating Temperature
Non-operating Temperature		-4° to 140° F (-20° to 60° C) at 5% to 95% humidity (non-condensing at ambient)
Operating Humidity		20% - 80% (non-condensing)
Non-operating Humidity		5% - 95%
Operating Altitude		0 to 5000m (16,400 feet)
	Non-operating Altitude	0 to 12,192m (40,000 feet)

Technical Specifications

Dimensions	Unpacked without stand	245.9mm x 41.5mm x 172.2mm 9.7 inches x 1.7inches x 6.8 inches
	Packed	307mm x 156mm x 236mm (inner) 490mm x 323mm x 266mm (outer) 12.08 in x 6.14 in x 9.29 inches (inner) 19.29 in x12.72in x 10.47 inches (outer)
	Display Head Dimensions (Unpacked without stand)	245.9mm x41.5mm x 172.2mm 9.7 in x1.7in x 6.8 in
	Weight (Unpacked without stand)	1.15kg 2.54lbs
	Weight (Packed)	2.2kg 4.85lbs
	Weight (head only)	
	What's in the box?	Monitor and accessories Documentation Software
Software	HP Display Assistant	
Option Kit Contents	HP Retail Display, Setup poster, and Documentation CD. Cable kit must be ordered separately. A minimum of one cable kit is required to connect the monitor to a host PC. See the configuration options and options and accessories sections of this document for available options.	
Country of Origin	China	

Environmental

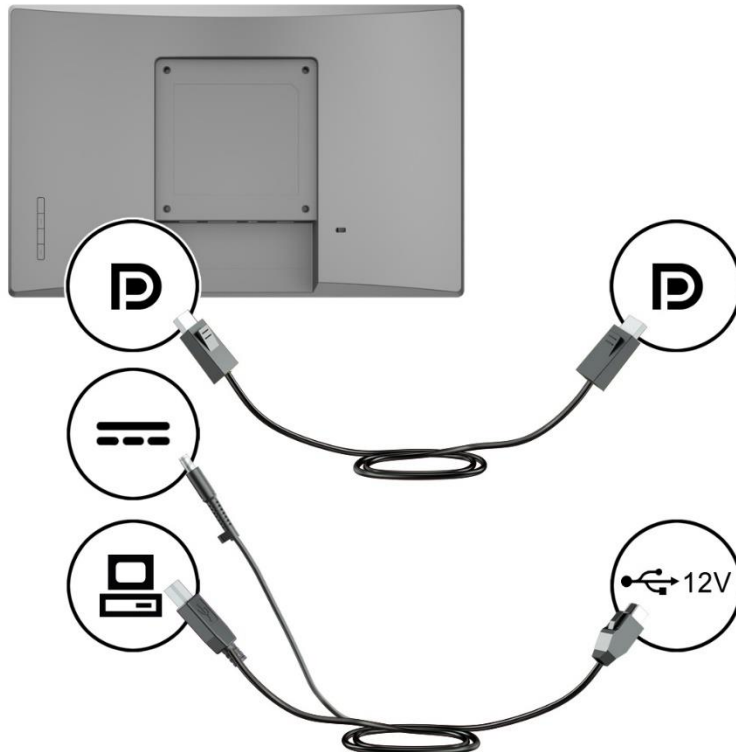
Environmental

Mercury-free display backlighting	Yes, Mercury-free backlights
Arsenic-Free Display Glass	Yes
Low Halogen	Yes NOTE: External power supplies, power cords, cables and peripherals are not Low Halogen. Service parts obtained after purchase may not be Low Halogen.
Agency Approvals and Certifications	CB, CE, FCC marking, ErP, CSA/C-UL/C-ETL Mark, cTUVus/UL/CSA-NTRL/ETL-NRTL Mark, ICES, Japan VCCI, CCC, CECP, China CEL, Taiwan BSMI, Bauart; KCC; e-standby; PSB, ISC mark, C-tick, ETC, Vietnam MEPS, Australian-New Zealand MEPS/EPA7.0
Microsoft WHQL Certification	Win-10, Win-8, Win-7
China Energy Label	Grade1(GB21520-2008)
TCO Certified Edge	N/A
TCO Certified	N/A
SmartWay Transport Partnership	Yes
Contains Recycled Plastics in Back Cover	Yes
Contains Recycled Plastics in Base/Stand	N/A Stand not included
Contains Recycled Plastics in Other Parts	Yes
Recyclable Plastics	N/A
Recyclable Packaging	N/A

Configuration

Configuration Options

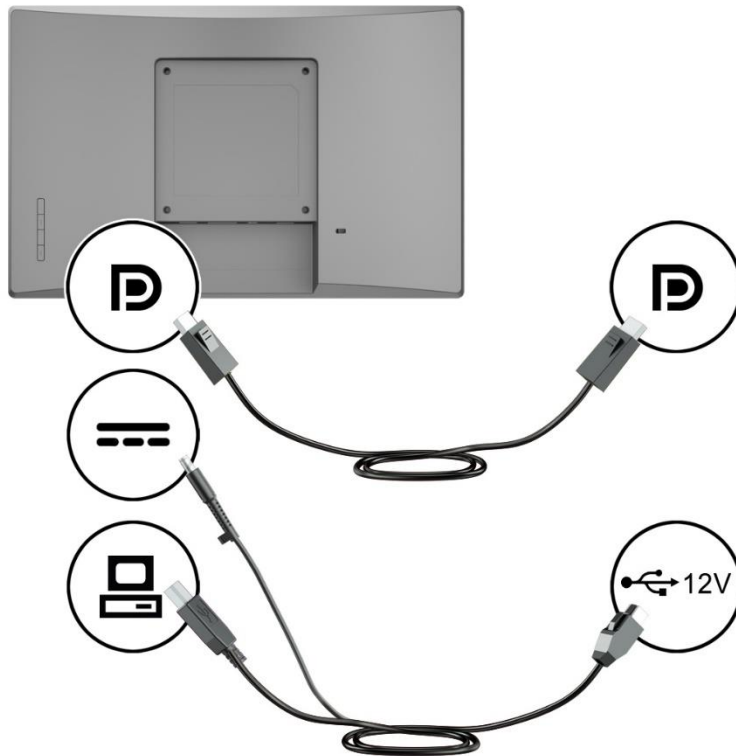
1) HP 10-in Retail Touch Monitor mounted to an HP RP9 Retail System as CFD with a 12 V powered USB port.






HP 700mm Cable Kit for CFD on RP9 (
HP Arm Mounting Bracket	700mm DisplayPort Cable	700mm USB/Power "Y" Cable
		

Configuration

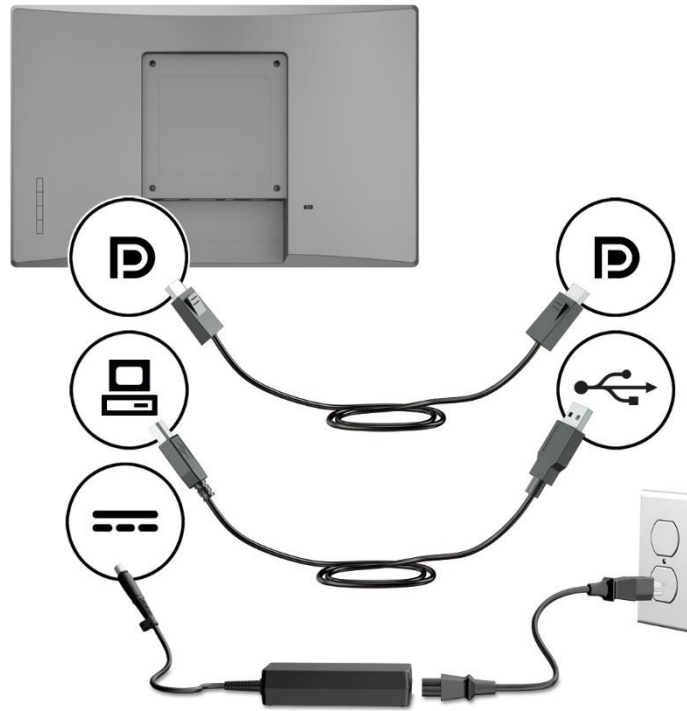
2) HP 10-in Retail Monitor (standalone) connected to an HP RP5 Retail System with a 12 V powered USB port.



T6N33AA)		
	300cm DisplayPort Cable	300cm USB/ Power "Y" Cable
		

Configuration

3) HP 10-in Retail Monitor (standalone) connected to an HP Retail System or PC without a 12 V powered USB port.



(T6N33AA)	300cm DisplayPort Cable	300 cm USB B-A cable	HP 45 W Power Adapter

Options and Accessories

Options and Accessories

Category	Description	Part Number
Stands	HP Monitor Stand for L7010t, L7014, L7014t	T6N33AA
Cables	HP 700mm Cable Kit for CFD on RP9	V7563AA
	HP 300cm DP and USB Power Y Cable for L7010t, L7014t, L7016t	V4P94AA
	HP 300cm DP and USB B to A Cable for L7016t, L7014t, L7010t	V4P96AA
Adapter	HP 45w Smart AC Adapter	H6Y88AA

Summary of Changes

Date of change:	Version History:		Description of change:
October 1, 2019	From v1 to v2	Removed	ENERGY STAR and EPEAT certifications

© Copyright 2019 HP Development Company, L.P. The information contained herein is subject to change without notice. The only warranties for HP products and services are set forth in the express warranty statements accompanying such products and services. Nothing herein should be construed as constituting an additional warranty. HP shall not be liable for technical or editorial errors or omissions contained herein.