



HP EliteOne 800 G5 23.8-inch All-in-One

Elegant and inviting design

Create a secure modern workspace with the sophisticated style and serious performance of the HP EliteOne 800 AiO. Make the 23.8-inch diagonal micro-edge anti-glare display appear dark to those around you at the touch of a button with optional HP Sure View Gen3.²



HP recommends Windows 10 Pro.

- HP recommends Windows 10 Pro¹
- 23.8" diagonal screen

Built-in security

- World-class comprehensive security helps protect your device, identity, and data on the HP EliteOne 800 AiO. Solutions like HP Sure Start Gen5³ and optional HP Sure View Gen3² are hardware enforced, self-healing, and simple to manage.

Lead with power and performance

- Power through your day on a performance packed HP EliteOne 800 AiO. Configurable options include an 9th Gen Intel® Core™ processor⁴, Intel® vPro™⁵, Intel® Optane™ memory⁶, up to 64 GB of DDR4 memory⁷, and SSD storage.⁷

Inspired design

- Count on this purposefully designed AiO to impress. Work in style on the elegant HP EliteOne 800 AiO with its thin profile, micro-edge anti-glare display, and superb cable management.

Featuring

- Power through your day with Windows 10 Pro with built-in security, collaboration, and connectivity.¹
- Firmware attacks can completely devastate your PC. Stay protected with HP Sure Start Gen5, the self-healing BIOS that automatically recovers itself from attacks or corruption.³
- To get control of your PC, attackers first need to take down its defenses. Keep critical security protections up and running with HP Sure Run Gen2.¹⁰
- Help protect your PC from websites, attachments, malware, ransomware, and viruses with hardware-enforced security from HP Sure Click.¹¹
- Advanced malware can seriously disrupt your business. HP Sure Recover Gen2 ensures fast, secure, and automated recovery with only a network connection.¹²
- Malware is evolving rapidly and traditional antivirus can't always recognize new attacks. Protect your PC against never-before-seen attacks with HP Sure Sense, which uses deep learning AI to provide exceptional protection against advanced malware.¹³
- The HP Manageability Integration Kit helps speed up image creation and management of hardware, BIOS, and security through Microsoft System Center Configuration Manager.⁸
- Help keep your network and VPN safe from unauthorized access by requiring up to three factors of authentication for log-in - including optional fingerprint reader and IR camera facial recognition - with policies hardened at the silicon level.^{7,14}

HP EliteOne 800 G5 23.8-inch All-in-One Specifications Table



Available Operating Systems	Windows 10 Pro 64 – HP recommends Windows 10 Pro. ¹ Windows 10 Pro 64 (National Academic only) ² Windows 10 Home 64 ¹ FreeDOS
Processor family ³⁶	8th Generation Intel® Core™ i3 processor (i3-8100); 8th Generation Intel® Core™ i5 processor (i5-8500); 8th Generation Intel® Core™ i7 processor (i7-8700); 9th Generation Intel® Core™ i3 processor (i3-9100, i3-9300); 9th Generation Intel® Core™ i5 processor (i5-9500, i5-9600); 9th Generation Intel® Core™ i7 processor (i7-9700); 9th Generation Intel® Core™ i9 processor (i9-9900); Intel® Celeron® processor (G4930 is Windows 10 only); Intel® Pentium® processor (G5420, G5600, G5620 are Windows 10 only)
Available Processors ^{37,38,39,40}	Intel® Celeron® G4930 with Intel® UHD Graphics 610 (3.2 GHz base frequency, 2 MB cache, 2 cores) Intel® Core™ i3-8100 with Intel® UHD Graphics 630 (3.6 GHz base frequency, 6 MB cache, 4 cores) Intel® Core™ i3-9100 with Intel® UHD Graphics 630 (3.6 GHz base frequency, up to 4.2 GHz with Intel® Turbo Boost Technology, 6 MB cache, 4 cores) Intel® Core™ i3-9300 with Intel® UHD Graphics 630 (3.7 GHz base frequency, up to 4.3 GHz with Intel® Turbo Boost Technology, 8 MB cache, 4 cores) Intel® Core™ i5-8500 with Intel® UHD Graphics 630 (3 GHz base frequency, up to 4.1 GHz with Intel® Turbo Boost Technology, 9 MB cache, 6 cores) supports Intel® vPro™ Technology Intel® Core™ i7-8700 with Intel® UHD Graphics 630 (3.2 GHz base frequency, up to 4.6 GHz with Intel® Turbo Boost Technology, 12 MB cache, 6 cores) supports Intel® vPro™ Technology Intel® Core™ i9-9900 with Intel® UHD Graphics 630 (3.1 GHz base frequency, up to 5 GHz with Intel® Turbo Boost Technology, 16 MB cache, 8 cores) supports Intel® vPro™ Technology Intel® Pentium® Gold G5420 with Intel® UHD Graphics 610 (3.8 GHz base frequency, 4 MB cache, 2 cores) Intel® Pentium® Gold G5600 with Intel® UHD Graphics 630 (3.9 GHz base frequency, 4 MB cache, 2 cores) Intel® Pentium® Gold G5620 with Intel® UHD Graphics 630 (4 GHz base frequency, 4 MB cache, 2 cores) Intel® Core™ i5-9500 with Intel® UHD Graphics 630 (3 GHz base frequency, up to 4.4 GHz with Intel® Turbo Boost Technology, 9 MB cache, 6 cores) supports Intel® vPro™ Technology Intel® Core™ i7-9700 with Intel® UHD Graphics 630 (3 GHz base frequency, up to 4.8 GHz with Intel® Turbo Boost Technology, 12 MB cache, 8 cores) supports Intel® vPro™ Technology
Chipset ⁴⁰	Intel® Q370 (vPro); Intel® Q370 (non-vPro)
Form factor	All-in-one
Maximum memory	64 GB DDR4-2666 SDRAM ^{3,4} Transfer rates up to 2666 MT/s.
Memory slots	2 SODIMM
Internal storage	500 GB up to 1 TB 7200 rpm SATA ⁵ 500 GB up to 2 TB 5400 rpm SATA ⁵ 500 GB SATA SED Opal 2 HDD ⁵ 500 GB 7200 rpm SATA FIPS SED ⁵ 256 GB up to 512 GB SATA SED Opal 2 TLC SSD ⁵ 256 GB up to 512 GB SATA FIPS SSD ⁵ 256 GB up to 512 GB PCIe® NVMe™ M.2 SSD ⁵ 128 GB up to 1 TB PCIe® NVMe™ TLC M.2 SSD ⁵ 256 GB up to 512 GB PCIe® NVMe™ SED Opal 2 TLC M.2 SSD ⁵ 256 GB up to 512 GB SATA SSD ⁵ 512 GB Intel® Optane™ Memory H10 with Solid State Storage ^{5,41}
Storage acceleration ⁴¹	16 GB NVMe™ Intel® Optane™ Memory for storage acceleration
Optical drive ⁶	HP 9.5 mm Slim Blu-ray writer double layer; HP 9.5 mm Slim DVD-ROM double layer; HP 9.5 mm Slim DVD-Writer double layer
Display ^{34,35}	23.8" diagonal FHD IPS widescreen WLED-backlit anti-glare (1920 x 1080) 23.8" diagonal FHD IPS widescreen WLED-backlit touch screen (1920 x 1080) 23.8" diagonal FHD HP Sure View integrated privacy screen IPS widescreen WLED-backlit anti-glare (1920 x 1080)
Available Graphics	Integrated: Intel® UHD Graphics 610; Intel® UHD Graphics 630 Discrete: AMD Radeon™ RX 560 Graphics (4 GB GDDR5 dedicated) ⁶
Audio ⁸	Audio by Bang & Olufsen, headset and headphone side ports (3.5 mm), line out rear port (3.5 mm), high performance integrated stereo speakers
Expansion slots	1 M.2 2230; 2 M.2 2230/2280 (1 PCIe M.2 2230 slot for WLAN and 2 PCIe M.2 2230/2280 slot for storage.)
Ports and Connectors	Side: 1 headphone; 1 headset connector Bottom: 1 audio-out; 1 DisplayPort™ 1.2; 1 HDMI; 1 power connector; 1 RJ-45; 2 USB 3.1 Gen 1; 4 USB 3.1 Gen 2; 1 USB 3.1 Type-C™ Gen 2 Optional: 1 SD 4 card reader
Input devices	HP Conferencing Keyboard; HP USB and PS/2 Washable Keyboard; HP USB Business Slim Keyboard; HP USB Keyboard; HP USB Smart Card (CCID) Keyboard; HP Wireless Business Slim Keyboard and Mouse Combo ⁹ ; HP USB 1000 dpi Laser Mouse; HP USB and PS/2 Washable Mouse; HP USB Antimicrobial Mouse; HP USB Optical Mouse ^{10,11} ;
Communications	LAN: Integrated Intel® I219LM GbE LOM ; WLAN: Intel® Dual Band Wireless-AC 9560 802.11ac (2x2) and Bluetooth® 5 M.2, non-vPro™ Intel® Dual Band Wireless-AC 9560 802.11ac (2x2) and Bluetooth® 5 M.2, vPro™ ^{7,33,40} ;
Drive Bays	One 2.5" HDD
Camera ¹²	2 MP FHD pop-up webcam with integrated dual array digital microphone, maximum resolution of 1920 x 1080; 2 MP FHD IR pop-up webcam (front-facing) and 2 MP webcam for face authentication with Windows Hello with integrated dual array digital microphone (rear-facing), maximum resolution of 1920 x 1080
Environmental	Operating temperature: 10 to 35°C; Operating humidity: 10 to 90% RH
Available Software ^{13,14,17}	Absolute Persistence module; Buy Office (sold separately); HP JumpStarts; HP Noise Cancellation Software; HP Wireless Wakeup; Intel® Unite™ with Skype for Business plug-in; Native Miracast Support
Security management ^{15,16,21,22,23,24,25,26,27,28,29,30}	DriveLock; Fingerprint reader; Hood sensor; HP BIOSphere; HP Client Security Suite Gen 5; HP Password Manager; HP Power On Authentication; HP Spare Key; HP Sure Click; HP Sure Recover; HP Sure Run; HP Sure Sense; HP Sure Start Gen 5; Intel® Identity Protection Technology (Intel® IPT); Parallel enable/disable (via BIOS); Power-on password (via BIOS); RAID configurations; Removable media write/boot control; SATA port disablement (via BIOS); Serial enable/disable (via BIOS); Setup password (via BIOS); Trusted Platform Module TPM 2.0 Embedded Security Chip shipped with Windows 10 (Common Criteria EAL4+ Certified)(FIPS 140-2 Level 2 Certified); USB enable/disable (via BIOS)
Management features	HP BIOS Config Utility (download); HP Client Catalog (download); HP Driver Packs (download); HP Management Integration Kit for Microsoft System Center Configuration Management; HP System Software Manager (download); Ivanti Management Suite ^{18,19,20}
Power	180 W internal power supply, up to 90% efficiency, active PFC; 210 W internal power supply, up to 92% efficiency, active PFC
Dimensions	21.2 x 7.1 x 18.4 in
Weight	19.24 lb
Energy efficiency compliance ³¹	CECP; ENERGY STAR® certified; EPEAT® 2019 registered where applicable
Environmental specifications ³²	Low halogen
Warranty	3 year (3-3-3) limited warranty and service offering includes 3 years of parts, labor and on-site repair. Terms and conditions vary by country. Certain restrictions and exclusions apply.

HP EliteOne 800 G5 23.8-inch All-in-One

Accessories and services (not included)

HP 8GB DDR4-2666 SODIMM



Boost the capabilities of your HP Business Desktop PC and improve system performance and application responsiveness with low-power, high-speed DDR4 memory from HP.
Product number: 3TK88AT

HP TLC 256 GB SATA SSD



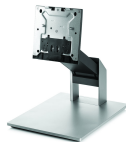
Expand the storage capabilities of your desktop with the HP TLC 256 GB SATA SSD¹, which includes TLC flash and the same reliability you already get from current from SSD drives.
Product number: P1N68AT

HP Quick Release Bracket 2



Use the HP Quick Release Bracket 2 to attach your HP Desktop Mini to an HP display¹ and a variety of stands, arms or wall mounts.² The failsafe "Sure-Lock" mechanism snaps the PC securely in place, and can be further secured with a theft-deterrent security screw.
Product number: 6KD15AT

HP EliteOne G3 800 AIO Recline Stand



Create a customized workspace for your HP All-in-One with the HP EliteOne 800 G3 AIO Recline Stand, which allows you to recline the system for maximum usability in a range of settings.
Product number: Z9H67AA

HP Keyed Cable Lock 10 mm



Help keep your notebook safe in the office and high-traffic areas by tethering it to a secure surface with the HP Master Keyed Cable Lock 10mm, designed specifically for ultra-thin profile notebooks.
Product number: T1A62UT

HP Wireless Slim Business Keyboard



Enjoy easy data entry and wireless connectivity with the HP Wireless Business Slim Keyboard, designed to complement the 2015 class of HP Business PCs.
Product number: N3R88AT

HP Shareboard



Transform your dry-erase whiteboard and markers into an online collaboration system and stream content live with meeting attendees all over the world with HP ShareBoard.
Product number: 2TX38AA

HP 4 year Next Business Day Onsite Hardware Support for Desktops



When hardware issues come up, the sooner you can get running again, the better. Have expertise at the ready with HP Hardware Next Business Day Onsite Service, and vastly improve your product uptime. With high-quality remote assistance or convenient onsite support available the next business day, help is there when you need it—so you can get back to work.
Product number: U7897E (for 4 year platforms), U7899E (for 5 year platforms)

HP EliteOne 800 G5 23.8-inch All-in-One

Messaging Footnotes

- ¹ Not all features are available in all editions or versions of Windows. Systems may require upgraded and/or separately purchased hardware, drivers, software or BIOS update to take full advantage of Windows functionality. Windows 10 is automatically updated, which is always enabled. ISP fees may apply and additional requirements may apply over time for updates. See <http://www.windows.com>.
- ² HP Sure View Gen3 integrated privacy screen is an optional feature with expected availability in August of 2019, must be configured at the factory. It is only available on non-touch models and is designed to function in landscape orientation.
- ³ HP Sure Start Gen5 is available on select HP PCs with Intel processors. See product specifications for availability. Expected to be available on August 26th, 2019.
- ⁴ Multi-Core is designed to improve performance of certain software products. Not all customers or software applications will necessarily benefit from use of this technology. Performance and clock frequency will vary depending on application workload and your hardware and software configurations. Intel's numbering, branding and naming are not a measurement of higher performance.
- ⁵ Some functionality of this vPro, such as Intel Active management technology and Intel Virtualization technology, requires additional 3rd party software in order to run. Availability of future "virtual appliances" applications for Intel vPro technology is dependent on 3rd party software providers. Compatibility with future "virtual appliances" is yet to be determined.
- ⁶ Intel® Optane™ memory system acceleration does not replace or increase the DRAM in your system and requires configuration with an optional Intel® Core™ i5 (or 7) processor.
- ⁷ Sold as an optional feature must be configured at the factory.
- ⁸ HP Manageability Integration Kit can be downloaded from <http://www8.hp.com/us/en/ads/clientmanagement/overview.html>.
- ⁹ Not all features are available in all editions or versions of Windows. Systems may require upgraded and/or separately purchased hardware, drivers, software or BIOS update to take full advantage of Windows functionality. Windows 10 is automatically updated, which is always enabled. ISP fees may apply and additional requirements may apply over time for updates. See <http://www.windows.com>.
- ⁸ HP Manageability Integration Kit can be downloaded from <http://www8.hp.com/us/en/ads/clientmanagement/overview.html>.
- ¹⁰ HP Sure Run Gen2: See product specifications for availability.
- ¹¹ HP Sure Click is available on select HP platforms and supports Microsoft® Internet Explorer, Chrome OS™, and Chromium™. Supported attachments include Microsoft Office (Word, Excel, PowerPoint) and PDF files in read-only mode. Check <http://h20195.www2.hp.com/v2/GetDocument.aspx?docname=4AA7-0922ENW> for all compatible platforms as they become available.
- ¹² HP Sure Recover is available on HP Elite PCs with 8th generation Intel® or AMD processors and requires an open, wired network connection. Not available on platforms with multiple internal storage drives or Intel® Optane™. You must back up important files, data, photos, videos, etc. before using HP Sure Recover to avoid loss of data.
- ¹³ HP Sure Sense requires Windows 10. See product specifications for availability.
- ¹⁴ HP Multi Factor Authenticate Gen2 requires Windows, Intel® Core™ processor, Intel® integrated graphics, and Intel® WLAN. Microsoft System Center Configuration Manager is required for deployment. Three authentication factors require Intel® vPro™.

Technical Specifications Footnotes

- ¹ Not all features are available in all editions or versions of Windows. Systems may require upgraded and/or separately purchased hardware, drivers, software or BIOS update to take full advantage of Windows functionality. Windows 10 is automatically updated, which is always enabled. ISP fees may apply and additional requirements may apply over time for updates. See <http://www.windows.com>.
- ² Some devices for academic use will automatically be updated to Windows 10 Pro Education with the Windows 10 Anniversary Update. Features vary; see <https://aka.ms/ProEducation> for Windows 10 Pro Education feature information.
- ³ For systems configured with more than 3 GB of memory and a 32-bit operating system, all memory may not be available due to system resource requirements. Addressing memory above 4 GB requires a 64-bit operating system. Memory modules support data transfer rates up to 2133 MT/s; actual data rate is determined by the system's configured processor. See processor specifications for supported memory data rate. All memory slots are customer accessible / upgradeable.
- ⁴ All memory slots are customer accessible / upgradeable.
- ⁵ For hard drives and solid state drives, GB = 1 billion bytes. TB = 1 trillion bytes. Actual formatted capacity is less. Up to 36 GB (for Windows 10) of system disk is reserved for the system recovery software.
- ⁶ Sold separately or as an optional feature.
- ⁷ Wireless access point and Internet service required and sold separately. Availability of public wireless access points limited.
- ⁸ All HP devices which carry the Bang & Olufsen brand are custom-tuned with Bang & Olufsen's acoustical engineers for precise sound experience in business use.
- ⁹ HP USB and PS/2 Washable Keyboard: PS/2 port not available on EliteOne 800 G5 AiOs.
- ¹⁰ Antimicrobial USB Mouse and HP USB Hardened Mouse are not available in all regions.
- ¹¹ HP USB and PS/2 Washable Mouse: PS/2 port not available on EliteOne 800 G5 AiOs.
- ¹² Sold separately or as an optional feature.
- ¹³ Miracast is a wireless technology your PC can use to project your screen to TVs, projectors, and streaming.
- ¹⁴ Absolute Persistence Module: Absolute agent is shipped turned off, and will be activated when customers activate a purchased subscription. Subscriptions can be purchased for terms ranging multiple years. Service is limited, check with Absolute for availability outside the U.S. The Absolute Recovery Guarantee is a limited warranty. Certain conditions apply. For full details visit: <http://www.absolute.com/company/legal/agreements/computrace-agreement>. Data Delete is an optional service provided by Absolute Software. If utilized, the Recovery Guarantee is null and void. In order to use the Data Delete service, customers must first sign a Pre-Authorization Agreement and either obtain a PIN or purchase one or more RSA SecurID tokens from Absolute Software.
- ¹⁵ HP Sure Click is available on select HP platforms and supports Microsoft Internet Explorer, Google Chrome™, and Chromium™. Supported attachments include Microsoft Office (Word, Excel, PowerPoint) and PDF files in read only mode, when Microsoft Office or Adobe Acrobat are installed.
- ¹⁶ HP Sure Recover: is available on HP Elite PCs with 8th generation Intel® or AMD processors and requires an open, wired network connection. Not available on platforms with multiple internal storage drives, Intel® Optane™. You must back up important files, data, photos, videos, etc. before use to avoid loss of data.
- ¹⁷ Intel® Unite™ with Skype for Business plug-in: Sold separately or as an optional feature.
- ¹⁸ HP Driver Packs: Not preinstalled, however available for download at <http://www.hp.com/go/clientmanagement>.
- ¹⁹ HP Manageability Integration Kit: Can be downloaded from <http://www8.hp.com/us/en/ads/clientmanagement/overview.html>.
- ²⁰ Ivanti Management Suite: Subscription required.
- ²¹ HP BIOSphere: Requires Intel® or AMD 8th Gen processors. Features may vary depending on the platform and configurations.
- ²² HP Client Security Suite: Requires Windows and Intel® or AMD 8th generation processors.
- ²³ HP Password Manager: Requires Internet Explorer or Chrome or FireFox. Some websites and applications may not be supported. User may need to enable or allow the add-on / extension in the internet browser.
- ²⁴ HP Sure Start: is available on HP Elite and HP Pro 600 products equipped with 8th generation Intel® or AMD processors.
- ²⁵ Firmware TPM: Is version 2.0. Hardware TPM is v1.2, which is a subset of the TPM 2.0 specification version v0.89 as implemented by Intel Platform Trust Technology (PTT).
- ²⁶ RAID configuration: Is optional and does require a second hard drive.
- ²⁷ HP Sure Run: Is available on HP Elite products equipped with 8th generation Intel® or AMD processors.
- ²⁸ Intel® Identity Protection Technology (Intel® IPT): Models configured with Intel® Core™ processors have the ability to utilize advanced security protection for online transactions. Intel® Identity Protection Technology (Intel® IPT), used in conjunction with participating web sites, provides double identity authentication by adding a hardware component in addition to the usual user name and password. Intel® Identity Protection Technology (Intel® IPT) is initialized through an HP Client Security module.
- ²⁹ Fingerprint reader: standard on HP EliteOne 800 G5 All-in-One touch screen models and sold separately or as an optional feature on non-touch models.
- ³⁰ HP Drive Lock is not supported on NVMe drives.
- ³¹ Based on US EPEAT® registration according to IEEE 1680.1 -2018 EPEAT®. Status varies by country. Visit www.epeat.net for more information.
- ³² External power supplies, power cords, cables and peripherals are not Low Halogen. Service parts obtained after purchase may not be Low Halogen.
- ³³ Wireless access point and internet service required and sold separately. Availability of public wireless access points limited. Wi-Fi 6 is backwards compatible with prior 802.11 specs. The specifications for Wi-Fi 6 (802.11ax) are draft and are not final. If the final specifications differ from the draft specifications, it may affect the ability of the notebook to communicate with other 802.11ax devices. Only available in countries where 802.11ax is supported.
- ³⁴ 23.8" diagonal IPS widescreen WLED backlight anti-glare LCD (1920 x 1080) non-touch or optional touch Projected Capacitive Touch supports up to 10 touch-points: Display Color Gamut: 72% NTSC; Brightness (typical): 250 nits
- ³⁵ 23.8" diagonal IPS widescreen WLED backlight anti-glare LCD (1920 x 1080) with HP Sure View (optional): Display Color Gamut: 72% NTSC; Brightness (typical): 285 nits (non-Privacy); 400 nits (Privacy).
- ³⁶ Your product does not support Windows 8 or Windows 7. In accordance with Microsoft's support policy, HP does not support the Windows 8 or Windows 7 operating system on products configured with Intel® and AMD 7th generation and forward processors or provide any Windows 8 or Windows 7 drivers on <http://www.support.hp.com>
- ³⁷ Multi-Core is designed to improve performance of certain software products. Not all customers or software applications will necessarily benefit from use of this technology. Performance and clock frequency will vary depending on application workload and your hardware and software configurations. Intel's numbering, branding and/or naming is not a measurement of higher performance.
- ³⁸ Intel® Turbo Boost technology requires a PC with a processor with Intel Turbo Boost capability. Intel Turbo Boost performance varies depending on hardware, software and overall system configuration. See www.intel.com/technology/turboboost for more information.
- ³⁹ Some functionality of vPro, such as Intel Active Management Technology and Intel Virtualization technology, requires additional 3rd party software in order to run. Availability of future "virtual appliances" applications for Intel vPro technology is dependant on 3rd party software providers. Compatibility with future "virtual appliances" is yet to be determined.
- ⁴⁰ For full Intel® vPro™ functionality, Windows, a vPro supported processor, vPro enabled chipset, vPro enabled wired LAN card and discrete TPM 2.0 are required. See <http://intel.com/vpro>
- ⁴¹ Intel® Optane™ memory is sold separately. Intel® Optane™ memory system acceleration does not replace or increase the DRAM in your system. Available for HP commercial desktops and notebooks and for select HP workstations (HP Z240 Tower/SFF, Z2 Mini, ZBook Studio, 15 and 17 G5) and requires a SATA HDD, 7th Gen or higher Intel® Core™ processor or Intel® Xeon® processor E3-1200 V6 product family or higher, BIOS version with Intel® Optane™ supported, Windows 10 version 1703 or higher, M.2 type 2280-S1-B-M connector on a PCH Remapped PCIe Controller and Lanes in a x2 or x4 configuration with B-M keys that meet NVMe™ Spec 1.1, and an Intel® Rapid Storage Technology (Intel® RST) 15.5 driver.

Sign up for updates hp.com/go/getupdated

© Copyright 2019 HP Development Company, L.P. The information contained herein is subject to change without notice. The only warranties for HP products and services are set forth in the express warranty statements accompanying such products and services. Nothing herein should be construed as constituting an additional warranty. HP shall not be liable for technical or editorial errors or omissions contained herein.

Bluetooth is a trademark of its proprietor and used by HP Inc. under license. Intel, Core and Intel vPro™ are trademarks of Intel Corporation in the U.S. and other countries. USB Type-C™ and USB-C™ are trademarks of USB Implementers Forum. DisplayPort™ and the DisplayPort™ logo are trademarks owned by the Video Electronics Standards Association (VESA®) in the United States and other countries. ENERGY STAR and the ENERGY STAR mark are registered trademarks owned by the U.S. Environmental Protection Agency. All other trademarks are the property of their respective owners.

4AA7-4123, 2019 July 15

