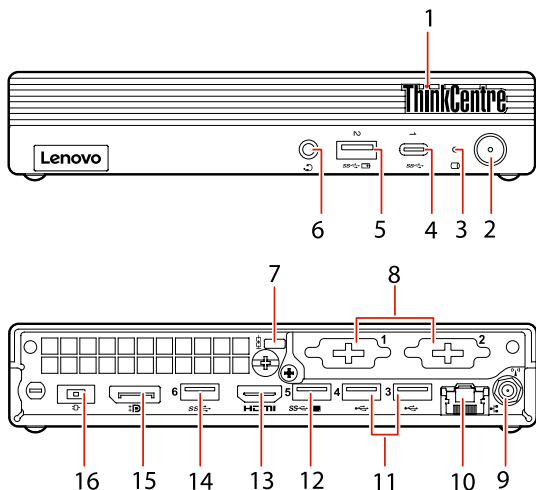


ThinkCentre M75q Gen 2


Setup Guide

Lenovo

Overview

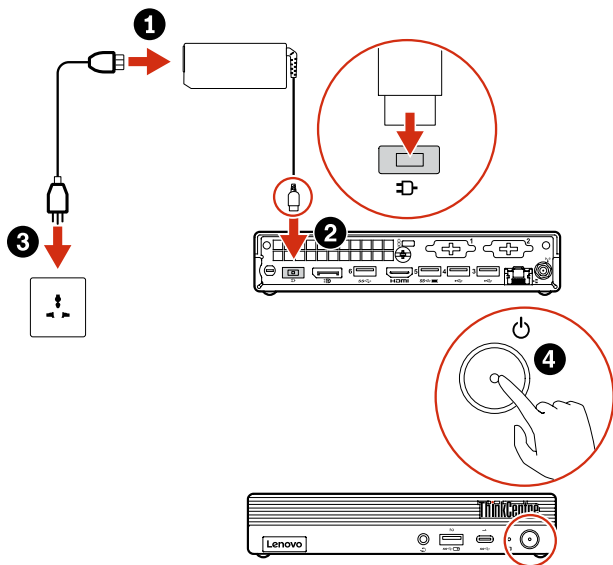
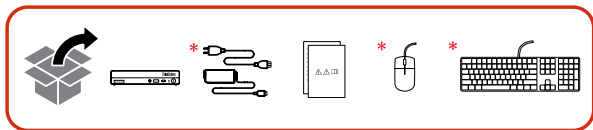


1. ThinkCentre® LED
2. Power button
3. Storage drive activity indicator
4. USB-C (3.2 Gen 1) connector
5. Always On USB 3.2 connector (Gen 1/Gen 2)
6. Headset connector
7. Security-lock slot
- * 8. Optional connectors
- * 9. Wi-Fi antenna slot
10. Ethernet connector
11. USB 2.0 connectors
12. USB 3.2 connector Gen 1
13. HDMI™ 1.4 out connector
14. USB 3.2 connector Gen 1
15. DisplayPort® out connector
16. Power adapter connector

 Read the statement on USB transfer rate in the *User Guide*. Refer to the *Safety and Warranty Guide* for accessing the *User Guide*.

* For selected models

Initial Setup



Additional information

European Union — compliance with the Radio Equipment Directive

Hereby, Lenovo (Singapore) Pte. Ltd., declares that the radio equipment type ThinkCentre M75q Gen 2 is in compliance with Directive 2014/53/EU.

The full text of the system EU declaration of conformity is available at the following Internet address:

<https://www.lenovo.com/us/en/compliance/eu-doc>

This radio equipment operates with the following frequency bands and maximum radio-frequency power:

Technology	Frequency band [MHz]	Maximum transmit power
WLAN 802.11b/g/n/ax	2400 - 2483.5	< 20 dBm
WLAN 802.11a/n/ac/ax	5150 - 5725	< 23 dBm
WLAN 802.11a/n/ac/ax	5725 - 5875	< 13.98 dBm
Bluetooth BR/EDR/LE	2400 - 2483.5	< 20 dBm

Usage of all the radio devices is limited to indoor in the band 5150 MHz to 5350 MHz (channels 36, 40, 44, 48, 52, 56, 60, 64).



First Edition (October 2020)

© Copyright Lenovo 2020.

LIMITED AND RESTRICTED RIGHTS NOTICE: If data or software is delivered pursuant to a General Services Administration "GSA" contract, use, reproduction, or disclosure is subject to restrictions set forth in Contract No. GS-35F-05925.

Reduce | Reuse | Recycle

