



## Quick Installation Guide



**TEW-432BRP**

H/W: v.D1.0R

# Table of Contents

English .....	1
1. Before You Start .....	1
2. Install Router .....	2
3. Replacing an existing router .....	5
4. Adding the router behind an existing router .....	7
Troubleshooting .....	9

# 1. Before You Start



## Package Contents

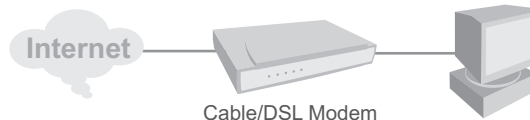
- TEW-432BRP
- Easy Go CD-ROM
- Quick Installation Guide
- RJ-45 Cat.5 Cable
- AC Power Adapter (7.5V, 1A)

## System Requirements

- Web Browser: Internet Explorer (5.0 or above)
- Computer with Network adapter installed
- Broadband Internet
- Installed Cable or DSL modem

**Important!** DO NOT connect the router until instructed to do so. Follow the steps below before you insert the Easy-Go CD-ROM into your computer's CD-ROM Drive.

1. Verify that you have a direct connection from your Cable or DSL modem to your computer. Also verify that you are connected to the Internet by browsing to a website, such as <http://www.trendnet.com>.



## 2. Install Router

1. Connect the antenna to the TEW-432BRP.



2. Insert the Easy Go CD-ROM in your computer's CD-ROM Drive and then click **Install Router**.



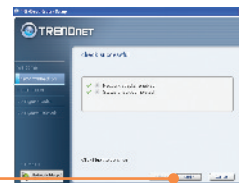
3. Click **Start Installation**.



4. Choose the desired language from the dropdown list. Click **No, thanks. I already know how to connect my computers and devices and set up printer and file sharing and then click Next.**



5. Click **Next**.



6. If this screen appears, go to **3. Replacing an Existing Router** or **4. Adding the Router Behind an Existing Router**. If not, please continue to step 7.



7. Turn off or unplug power to your cable or DSL modem. Then click **Next**.



8. Unplug the existing Ethernet cable from your cable or DSL modem and plug it into yellow port number 1 on the TEW-432BRP. Then click **Next**.



**Note:** If you do not check “No thanks, I already know how to connect my computers and devices and set up printer and file sharing”, a third party software program, Network Magic will install. This program is not required to be installed in order to get onto the Internet.

**Warning!!:** DO NOT plug the cable or DSL modem power supply into the TEW-432BRP.

9. Connect the included power supply from an available power outlet to the TEW-432BRP.



10. Please wait while the TEW-432BRP is being configured.



11. Connect one end of the included grey Ethernet cable to the grey port labeled **WAN** on the back of your new router. Connect the other end of the cable to your cable or DSL modem. Then click **Next**.



12. Reconnect the power supply to your cable or DSL modem. Wait 30 seconds then click **Next**.



13. If this window appears, your Internet connection requires a user name and password. Enter your DSL Account Name and Password. Then click **Next**.



14. Please wait while the TRENDnet Router Setup configures your router.



15. Enter a password for your router. By default, the password is **admin**. Click **Next**.



16. Enter a unique network name (SSID) for your wireless network and then click **Next**. The network name (SSID) identifies your wireless network.



17. Select the desired level of security, enter a security key or keep the randomly generated security key and then click **Next**. It is recommended that you use **Most secure (WPA)**. If your wireless adapter does not support WPA, please select **Secure (WEP)** instead.



21. Click **Next**.



22. Click **Next**.



23. Select **Exit TRENDnet Router Setup** and then click **Finish**.



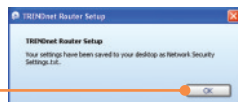
18. Click **Next**.



24. Open up your browser and type in a URL (e.g. [www.trendnet.com](http://www.trendnet.com)) to see if you are online.



19. Click **OK**.



20. Please wait while the TRENDnet Router Setup configures your router.



**Your installation is now complete.**

For detailed information regarding the TEW-432BRP configuration and advanced settings, please refer to the User's Guide included on the Easy Go Installation CD-ROM or TRENDnet's website at [www.trendnet.com](http://www.trendnet.com)

### 3. Replacing an existing router

1. Select **Yes, I am replacing my existing router with a new router** and then click **Next**.



2. Turn off or unplug power to your cable or DSL modem. Then click **Next**.



3. Unplug the power cable from your old router and remove its power supply from the outlet.



4. Disconnect the Ethernet cable from the port labeled "WAN" or "Internet" on the back of your old router. Plug this cable into the grey port labeled "WAN" on the TEW-432BRP. Then click **Next**.



5. Disconnect all remaining Ethernet cables from the back of your old router and plug them into the yellow ports on the TEW-432BRP.



**Warning! DO NOT plug the cable or DSL modem power supply into the TEW-432BRP.**

6. Connect the included power supply from an available outlet to the TEW-432BRP.



7. Please wait while the router is being configured.



8. Reconnect the power supply to your cable or DSL modem. Wait 30 seconds then click **Next**.



9. Please wait while the TRENDnet Router Setup configures your router.



10. Select the type of Internet Service, and then click **Next**. Follow the wizard instructions for configuring the Internet. Please verify your settings with your Internet Service Provider.



11. Please wait while the TRENDnet Router Setup configures your router.



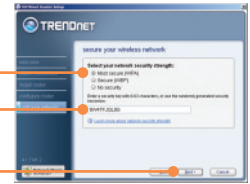
12. Enter a password for your router. By default, the password is **admin**. Click **Next**



13. Enter a unique network name (SSID) for your wireless network and then click **Next**. The network name (SSID) identifies your wireless network.



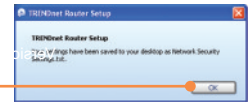
14. Select the desired level of security, enter a security key or keep the randomly generated security key and then click **Next**. It is recommended that you use **Most secure (WPA)**. If your wireless adapter does not support WPA, please select **Secure (WEP)** instead.



15. Click **Next**.



16. Click **OK**.



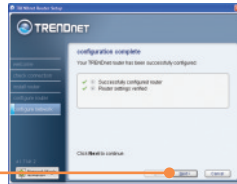


## 4. Adding the router behind an existing router

17. Please wait while the TRENDnet Router Setup configures your router.



18. Click Next.



19. Click Next.



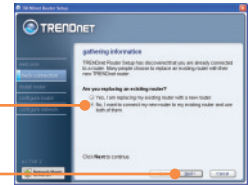
20. Select Exit TRENDnet Router Setup and then click Finish.



21. Open up your browser and type in a URL (e.g. www.trendnet.com) to see if you are online.



1. Select **No, I want to connect my new router to my existing router and use both of them** and then click **Next**.



2. Find the Ethernet cable that goes from your computer to your old router. Unplug this cable from your old router and connect it to yellow port number 1 on your new TRENDnet router. Then click **Next**.



**Warning! DO NOT plug the cable or DSL modem power supply into the TEW-432BRP.**

3. Connect the included power supply from an available outlet to the TEW-432BRP.



4. Connect one end of the included grey Ethernet cable to the grey port labeled **WAN** on the back of your new router. Connect the other end of the cable to one of the LAN ports on your old router. Then click **Next**.



5. Enter a password for your router. By default, password is **admin**. Click **Next**.



6. When the **wireless network** screen appears, enter a unique network name and then click **Next**.



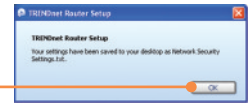
7. Select the desired level of security, enter a security key or keep the randomly generated security key and then click **Next**. It is recommended that you use **Most secure (WPA)**. If your wireless adapter does not support WPA, please select **Secure (WEP)** instead.



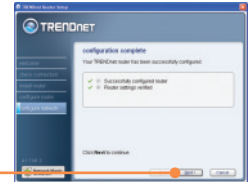
8. Click **Next**.



9. Click **OK**.



10. Click **Next**.



11. Click **Finish**.



12. Open up your browser and type in a URL (e.g. [www.trendnet.com](http://www.trendnet.com)) to see if you are online.



## Register Your Product

To ensure the highest level of customer service and support, please take a moment to register your product Online at:

[www.trendnet.com/register](http://www.trendnet.com/register)

Thank you for choosing TRENDnet

**Q1: I inserted the Easy Go CD-ROM into my computer's CD-ROM drive and the installation menu does not appear automatically. What should I do?**

**A1:** If the installation menu does not appear automatically, click **Start**, click **Run**, and type **D:\Autorun.exe** where "D" in "D:\Autorun.exe" is the letter assigned to your computer's CD-ROM Drive. Then click **OK** to start the installation.

**Q2: How can I get into the TEW-432BRP web configuration page?**

**A2:** After you install the TEW-432BRP Wireless Router, you can access the web configuration page by opening your web browser and entering <http://192.168.10.1> into the web browser's address bar, where <http://192.168.10.1> is the default IP address of the TEW-432BRP Wireless Router. The default user name and password is admin.

**Q3: I am not sure what type of Internet Account Type I have for my Cable/DSL connection. How do I find out?**

**A3:** Contact your Internet Service Provider's (ISP) Customer Service for the correct information.

**Q4: I received an error message while running the Install Wizard. What should I do?**

**A4:** Make sure that your computer's CD-ROM is in working condition. Also verify that all cable connections are secure and that you are able to connect to the Internet, and then retry installing the router. During setup, the Install Wizard will check the operation of your network adapter and Internet connection. If you get the following error codes try the corresponding troubleshooting steps:

#### **Error 301/302: Internal Error**

- 1) Click cancel to exit the program
- 2) Eject the CD
- 3) Restart your Computer
- 4) Reinsert the Router setup CD

#### **Error 311/312: No Wired Adapter Detected**

If your PC has a wired network adapter try the following:

- 1) Enable your wired network adapter
- 2) Click **Retry** to install your router again

If your PC do not have a wired network adapter, you must install a wired network adapter.

#### **Error 313: Multiple Wired Adapters Detected**

- 1) Identify the wired network adapter that you wish to use for setting up your router
- 2) Disable all other wired network adapters
- 3) Click **Retry** to install your router again

#### **Error 321: Ethernet Cable Not Connected**

- 1) Make sure the Ethernet cable from your PC is securely connected to a LAN port on the back of your router
- 2) Make sure the power cable on your new router is securely connected and the lights on the front of your router are flashing.
- 3) Click **Retry** to install your router again

#### **Error 322: New Router Not Detected**

- 1) Make sure that you are connecting your new router and not your old router (if applicable).
- 2) Make sure the Ethernet cable from your PC is securely connected to LAN
- 3) Click **Retry** to install your router again

### **Error 323: Could Not Access New Router**

- 1) Restore your router to factory defaults. Take a pin or paperclip and press the reset button for 15 seconds, then let go.
- 2) Click Cancel to exit the program.
- 3) Eject the CD.
- 4) Restart your computer.
- 5) Connect the Ethernet cable from your computer to the LAN port on your modem.
- 6) Reinsert the CD.

If you continue to have problems, you will need to log in to router and configure the your Internet connection settings manually:

- 1) Open up Internet Explorer, type into the address bar <http://192.168.10.1> and then hit enter
- 2) Enter the user name and password. The default user name and password is **Admin**.
- 3) Click **Main -> WAN**. Select your connection type and configure your Internet connection settings. Contact your ISP for information regarding your Internet connection settings. Once you have configured your Internet connection settings, and then click **Apply**.
- 4) If you do not get onto the Internet right away, unplug the power to your modem and router. Wait 15 seconds, then plug your modem back in. Wait for your modem to boot up, then plug your modem back in. Once your modem has booted up, then plug your router back in. Then wait for your router to boot up.

### **Q5: I am trying to install the router on my Mac. What should I do?**

**A5:** Follows steps 1-4 in question 4 to manually configure the router.

### **Q6: All the settings are correct, but I can not make a wireless connection to the Router. What should I do?**

**A6:** First, double check that the WLAN light on the Router is lit. Second, power cycle the TEW-432BRP. Unplug the power to the TEW-432BRP. Wait 15 seconds, then plug the power back in to the TEW-432BRP. Third, log into the TEW-432BRP by entering into the web browser's address bar. Click on **Wireless**. Make sure **Enabled** is selected. Fourth, contact the manufacturer of your wireless network adapter and make sure the wireless network adapter is configured with the proper SSID.

### **Q7: What is Network Magic?**

**A7:** Network Magic is an optional third party bonus program. It works with your router to setup, manage, repair and protect your home network. To install Network Magic, do not check "No, thanks. I already know how to connect my computers and devices and set up printer and file sharing". If you do not want to install Network Magic, check "No, thanks. I already know how to connect my computers and devices and set up printer and file sharing".

If you still encounter problems or have any questions regarding the TEW-432BRP, please refer to the User's Guide included on the Easy Go Setup CD-ROM or contact Trendnet's Technical Support Department.

### Certifications

This equipment has been tested and found to comply with FCC and CE Rules.

Operation is subject to the following two conditions:

- (1) This device may not cause harmful interference.
- (2) This device must accept any interference received. Including interference that may cause undesired operation.



Waste electrical and electronic products must not be disposed of with household waste. Please recycle where facilities exist. Check with you Local Authority or Retailer for recycling advice.



**NOTE:** THE MANUFACTURER IS NOT RESPONSIBLE FOR ANY RADIO OR TV INTERFERENCE CAUSED BY UNAUTHORIZED MODIFICATIONS TO THIS EQUIPMENT. SUCH MODIFICATIONS COULD VOID THE USER'S AUTHORITY TO OPERATE THE EQUIPMENT.

#### ADVERTENCIA

En todos nuestros equipos se mencionan claramente las características del adaptador de alimentación necesario para su funcionamiento. El uso de un adaptador distinto al mencionado puede producir daños físicos y/o daños al equipo conectado. El adaptador de alimentación debe operar con voltaje y frecuencia de la energía eléctrica domiciliar existente en el país o zona de instalación.



## Customer Support

Visit [www.trendnet.com/support](http://www.trendnet.com/support)

Email:

[support@trendnet.com](mailto:support@trendnet.com)



### Europe (Germany • France • Italy • Spain • Switzerland • UK)

**Toll Free Telephone:** +00800 60 76 76 67

English/Espanol - 24/7

Francais/Deutsch - 11am-8pm, Monday - Friday MET

### Worldwide

**Telephone:** +{31} [0] 20 504 05 35

English/Espanol - 24/7

Francais/Deutsch - 11am-8pm, Monday - Friday MET

## Product Warranty Registration

Please take a moment to register your product online.

Go to TRENDnet's website at <http://www.trendnet.com/register>

**TRENDnet**<sup>®</sup>  
20675 Manhattan Place  
Torrance, CA 90501  
USA