



# Western Digital Serial ATA Hard Drive Installation Guide



# **Western Digital Serial ATA Hard Drive**

## *Installation Guide*

Information furnished by Western Digital is believed to be accurate and reliable. However, no responsibility is assumed by Western Digital for its use nor for any infringement of patents or other rights of third parties which may result from its use. No license is granted by implication or otherwise under any patent or patent rights of Western Digital. Western Digital reserves the right to change specifications at any time without notice.

© 2004 Western Digital Technologies, Inc. All rights reserved.

Western Digital and the Western Digital logo are registered trademarks, and Data Lifeguard Tools and SecureConnect are trademarks of Western Digital Technologies, Inc. Other marks may be mentioned herein that belong to other companies.

2779-001006-A02 02/04

# Table of Contents

---

## Before Getting Started

Kit Contents . . . . .	1
Gather These Materials and Tools . . . . .	1
System Requirements . . . . .	1
Unpacking and Handling Procedures . . . . .	1
Record Your Hard Drive Information. . . . .	2
Register Your Drive . . . . .	2
Back Up Your Data . . . . .	2
Open Your Computer. . . . .	2

---

## Install the Hard Drive

Jumper Settings. . . . .	3
Connect the Drive . . . . .	3
Configure the System BIOS . . . . .	6

---

## Data Lifeguard Tools v11.0

Create a Bootable Diskette . . . . .	7
View Installation Tutorial. . . . .	8
Set Up Your Hard Drive. . . . .	9
Install a New Boot Drive . . . . .	9
Install an Additional Storage Drive . . . . .	12
Drive-to-Drive Copy Utility. . . . .	15
Hard Drive Information . . . . .	16
Alternate Instructions for Installing a Drive (Windows XP/2000). . . . .	17

---

## Troubleshooting

Advanced Jumper Settings . . . . .	18
Frequently Asked Questions . . . . .	19
Western Digital Service and Support . . . . .	20

---

## Appendix

Regulatory Compliance. . . . .	21
Agency Approvals . . . . .	21
Federal Communication Commission (FCC) . . . . .	21
Underwriters Laboratories (UL) . . . . .	21
Canadian Standards Association (CSA) . . . . .	21

TUV Essen Laboratories . . . . .	21
CE Compliance For Europe . . . . .	21
Radio Frequency Interference Statement . . . . .	21
FCC Notice . . . . .	21
CSA Notice. . . . .	22
Warranty Policy and Limitations . . . . .	22
Return Material Authorization . . . . .	22
Extended Warranty . . . . .	22
Warranty Limitations . . . . .	22
Limitation of Remedies . . . . .	23
Limitation of Damages . . . . .	23
Limited Warranty . . . . .	23
No Consequential or Other Damages . . . . .	23
Your Use of the Product . . . . .	23
Additional Limitations on Warranty . . . . .	23

**1**

# Before Getting Started

Thank you for purchasing a Western Digital Serial ATA (SATA) hard drive. This installation guide provides instructional steps and corresponding illustrations to make the installation process of your new hard drive as quick and easy as possible. For the latest news and product updates, visit our Web site at [www.westerndigital.com](http://www.westerndigital.com).

## Kit Contents

- Western Digital Serial ATA hard drive
- Western Digital SATA interface cable with SecureConnect™
- Quick Install Guide
- Data Lifeguard Tools™ software CD (for Western Digital 7200 RPM SATA hard drive kits)

## Gather These Materials and Tools

- Computer system manual
- Operating system manual
- Operating system installation CD
- Small Phillips and flat-blade screwdrivers

## System Requirements

- Serial ATA interface connector on motherboard or Serial ATA host adapter card (sold separately) with an available 32-bit PCI expansion slot
- Windows® 2000 or Windows XP

## Unpacking and Handling Procedures

Western Digital hard drives are precision instruments and should be handled with care during unpacking and installation. Hard drives can be damaged by rough handling, shock and vibration, or electrostatic discharge (ESD). Be aware of the following precautions:

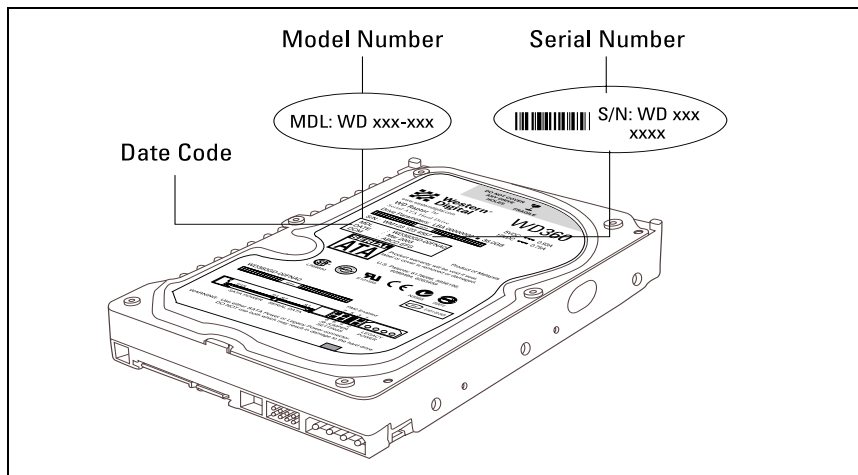
- Do not unpack your hard drive until you are ready to install it. Your hard drive is packaged in an anti-static bag.
- Save the original packaging materials and the anti-static bag in case you need to return your hard drive. Your warranty will be void if your returned drive is shipped in anything other than the original packaging or Western Digital approved materials.
- To avoid ESD problems, ground yourself by touching the metal chassis of the computer or by wearing a grounding strap before handling the hard drive. Articles of clothing generate static electricity. Do not allow clothing to come in direct contact with the hard drive or circuit board components.
- Handle the hard drive by the sides only. Avoid touching the circuit board components on the bottom of the hard drive.
- Do not drop, shake, or knock down the hard drive.
- Do not stack hard drives or stand your Western Digital hard drive on its edge.

## Record Your Hard Drive Information

In the table that follows, write down the serial number, model number, and date code listed on your new Western Digital SATA hard drive. The complete serial number, model number, and date code are on the large label at the top of the drive. This information is required for technical support purposes. See the illustration below for reference.

**IMPORTANT:** Do not remove, tear, or damage the tape seal or any labels from the drive; these actions will void the warranty.

Serial Number:	
Model Number:	Date Code:



## Register Your Drive

Take advantage of Western Digital special offers and product updates by registering your new hard drive online at <https://www.wdc.com/en/products/registration>.

## Back Up Your Data

Before performing any hardware installation, protect your data by backing up your existing hard drive before installing your new Western Digital hard drive. Most operating systems include a backup utility. Refer to your operating system or utilities documentation for instructions.

## Open Your Computer

**IMPORTANT:** Before handling your system components, discharge static electricity by touching the metal chassis of your computer or by wearing a grounding strap.

1. Power off the computer.
2. Unplug the power cord.
3. Remove the computer system outside cover (refer to your computer system manual for instructions).

## 2

## Install the Hard Drive

**IMPORTANT** - for WD 7200 RPM SATA hard drive kits only; for all other WD SATA hard drive kits, skip to "Jumper Settings" below.

**If Installing Your New Western Digital Hard Drive as an Upgrade From a Previously Installed Hard Drive:** To ensure the optimal settings for your drive configuration, we recommend you run the Installation Tutorial in the Windows version of Data Lifeguard Tools prior to the hardware installation to generate your custom installation instructions. For instructions, see page 8.

### Jumper Settings

Western Digital Serial ATA hard drives ship from the factory with a jumper shunt in the Default position (across pins 1 and 2). It is not necessary to move the jumper shunt on the drive for workstation or desktop use.

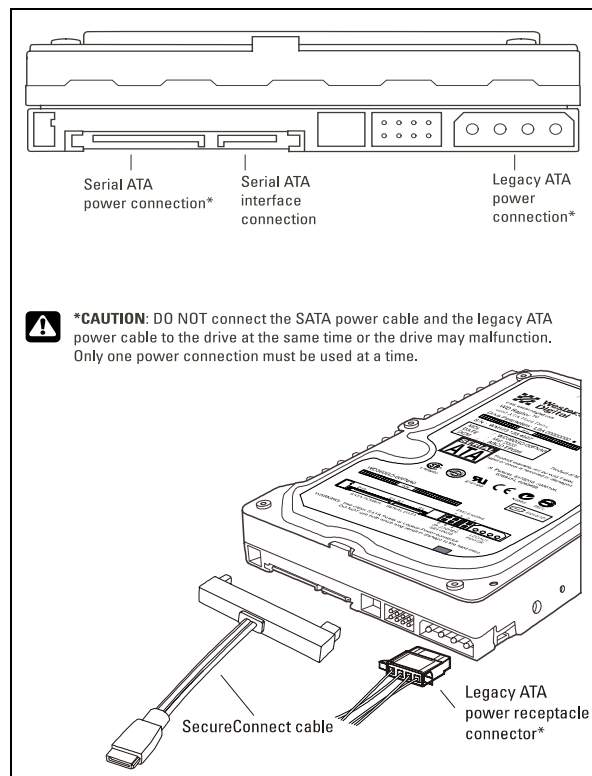
For more information on advanced jumper settings, refer to page 18.

### Connect the Drive

*Note:* Western Digital's Serial ATA cable with SecureConnect (included in the kit) is recommended for use with all Western Digital Serial ATA hard drives.

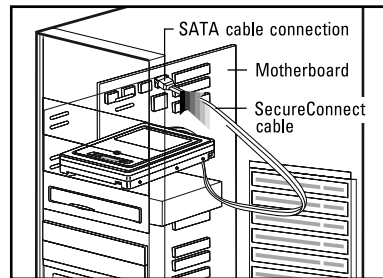
#### 1. Connect the SATA interface cable to the hard drive:

Connect the larger end of the WD SATA cable directly to the SATA interface connection on the hard drive. The SATA connectors are keyed to ensure proper insertion.

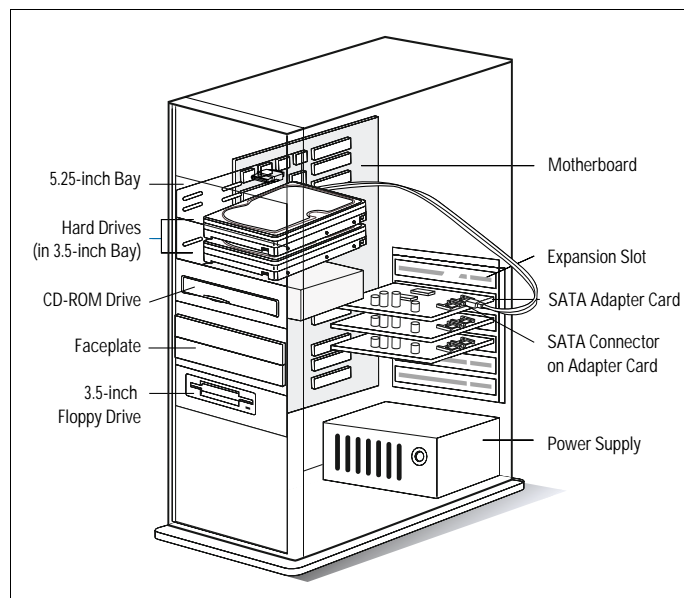


## 2. **Connect the SATA interface cable to the SATA interface port:**

Connect the smaller end of the WD SATA cable to an available SATA port located on your computer system's motherboard or the SATA host adapter (sold separately). Both configurations shown below.



*Serial ATA Motherboard Configuration*



*Serial ATA Host Adapter Configuration*

## 3. **Attach the power supply cable:**

Attach the computer power supply cable to the legacy ATA 4-pin power connector. The legacy ATA 4-pin power connector is keyed to ensure proper insertion.

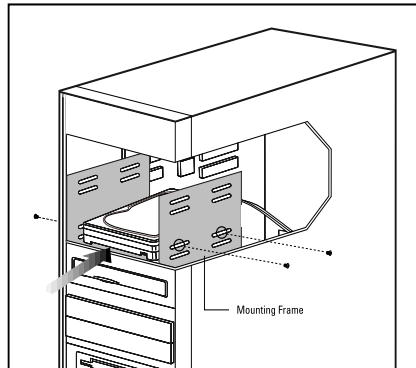
**Caution:** Western Digital's SATA cable with SecureConnect does not supply power to the drive. When using the Western Digital SATA cable, you must also attach the legacy ATA 4-pin power connector to the SATA drive. If instead you use a standard SATA interface cable (not included) on the SATA drive, **DO NOT** connect both SATA power cable (not included) and legacy power cable at the same time or the drive will malfunction. To prevent incorrect connection, use the Western Digital SATA interface cable supplied in the kit.



#### **4. Mount and secure the hard drive:**

Secure the Western Digital hard drive in an available 3.5-inch drive bay using the four mounting screws provided.

*Note:* To ensure proper grounding, be sure to use all four screws.



#### **5. Power on the computer:**

Replace and secure the system cover, reconnect the power cable, and power on the system. This concludes the hard drive installation process.

At startup, your system BIOS should auto-detect the hard drive with a series of system messages identifying the Western Digital hard drive. If there is no hard drive detection or an error message appears, you will have to enter the system BIOS to set up the drive. If the drive was detected, you may now format and partition the drive.

- a) To configure the system BIOS, proceed to the next section on page 6.
- b) If your Western Digital SATA hard drive came with a Data Lifeguard Tools CD, skip to "Data Lifeguard Tools v11.0" on page 7.

## Configure the System BIOS

Before partitioning and formatting your hard drive, you must tell the system what type of hard drive it is. If you have an older system, it may be necessary for you to either upgrade your system BIOS or configure the current BIOS so that the new drive will be properly detected.

To configure your system BIOS:

1. Enter your CMOS setup program (sometimes called the Setup program). Systems typically display a message at startup indicating which function key to press to enter setup. The most common function keys are **F1**, **F2**, or **Delete**. Refer to your system manual for instructions if necessary.
2. Find any **Auto Detection** or **Auto Config** option that may be present in your BIOS. If given a choice, select the **LBA (Logical Block Addressing)** option and enable it. In some cases, LBA will be an option under **Translation Mode**. In other systems, **Auto Detection** is preselected.
3. Enable options such as **LBA** or **Translation Mode** available in most current system BIOSs.  
*Note:* If your system BIOS does not have an **Auto Config** drive type or does not show full capacity, disable **LBA**, select **User Defined**, and enter **1023 cylinders**, **16 heads**, and **63 sectors** for the drive parameters.  
If your system BIOS does not have auto config or **User Defined** option, select **Type 9**. Selecting **Type 9** ensures that Data Lifeguard Tools will install on your system.
4. To boot from the Data Lifeguard Tools CD, you may need to change the boot sequence. Find the boot order settings in your system BIOS and select the CD-ROM drive as the first device to be booted from startup, followed by any removable devices (such as floppy disk drive), and the hard drive(s).
5. Save your settings and exit the system BIOS. Insert the Data Lifeguard Tools CD into your CD-ROM drive and restart. Your system will boot from the Data Lifeguard Tools CD upon startup.

**IMPORTANT:** If your system cannot boot from a CD, you can create a Data Lifeguard Tools bootable diskette instead. See page 7 for instructions.

**3**

## Data Lifeguard Tools v11.0

*Note:* If your hard drive kit is not supplied with a Data Lifeguard Tools CD, skip to page 17.

Western Digital provides Data Lifeguard Tools to assist with hard drive installation, management, and diagnostics. Depending on your setup and configuration, you can use either the Windows or DOS version of Data Lifeguard Tools.

Data Lifeguard Tools contents:

- **View Installation Tutorial** - Create, view, and print a customized installation manual.
- **Set Up Your Hard Drive** - Partition and format an installed hard drive.
- **Drive-to-Drive Copy Utility** - Copy all the files or a specific folder from one drive to another; set a specific hard drive size.
- **Hard Drive Information** - Configure jumper settings and other technical information regarding your hard drive.
- **Register Online** - Register your drive online (Internet connection required).

*Note:* The Windows and DOS versions of Data Lifeguard Tools vary slightly from one another in text, graphic placement, or color.

### Create a Bootable Diskette

If you wish to use a floppy diskette to utilize Data Lifeguard Tools, you can create a bootable diskette by following the instructions below. You can also download the latest version of Data Lifeguard Tools from our Web site at [support.wdc.com/download](http://support.wdc.com/download).

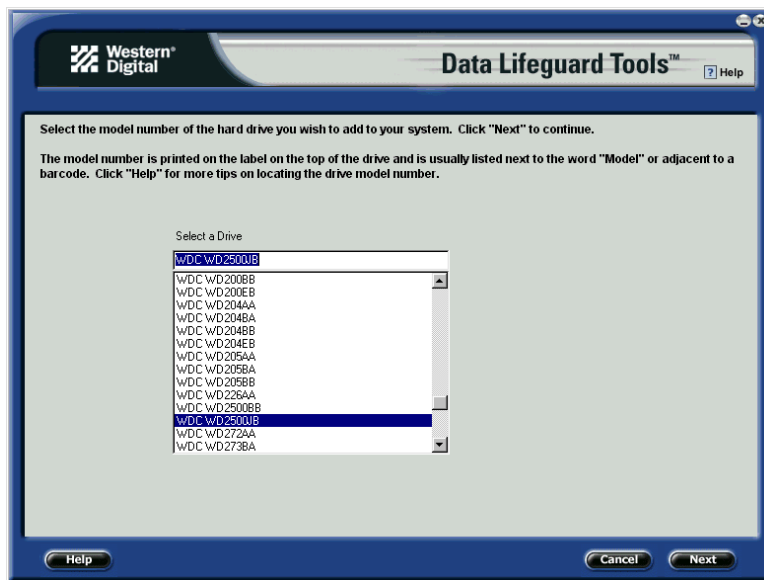
1. Insert the Data Lifeguard Tools CD into your CD-ROM drive.
  - a) If using the DOS version, restart the computer and boot from the CD.
  - b) If using the Windows version, the CD autoruns on your desktop.
2. When the setup menu appears, select **Create a Data Lifeguard Bootable Installation Diskette**. Follow the directions as prompted.

## View Installation Tutorial

This section allows you to create and print custom hardware installation instructions.

*Note:* The model number for your hard drive is printed on the label located on the top of the drive.

1. Insert the Data Lifeguard Tools CD into your CD-ROM drive.
  - a) If using the DOS version, restart the computer and boot from the CD.
  - b) If using the Windows version, the CD autoruns on your desktop.
2. Select **View Installation Tutorial** from the setup menu.
3. Data Lifeguard Tools may ask you to select your model number or the desired hard drive configuration, depending on whether you run the Windows or DOS version. Follow the instructions as prompted to create and print your custom instructions.



4. If you are using Windows, your default Web browser will open automatically and display your custom instructions. If using the DOS version, your instructions will display in the window. Click **Next** to print the instructions.

*Note:* If your hard drive is not listed, you can manually type in the model number.

## Set Up Your Hard Drive

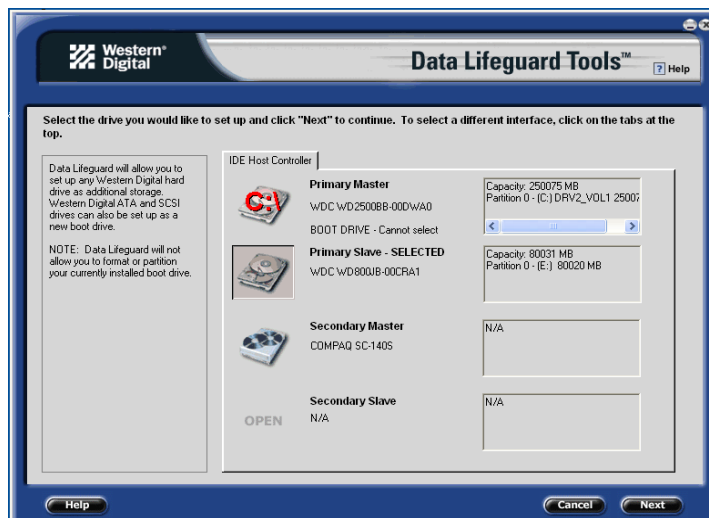
This section contains instructions for installing your new Western Digital hard drive either as a new boot drive or as an additional storage drive.

### Install a New Boot Drive

1. Insert the Data Lifeguard Tools CD into your CD-ROM drive.
  - a) If using the DOS version, restart the computer and boot from the CD.
  - b) If using the Windows version, the CD autoruns on your desktop.
2. Select **Run Data Lifeguard Installation Software** from the setup menu.
3. The main menu below appears after Data Lifeguard Tools has loaded. Click on **Set Up Your Hard Drive** from the list of available options. Data Lifeguard will take several moments to scan for all of your system devices.

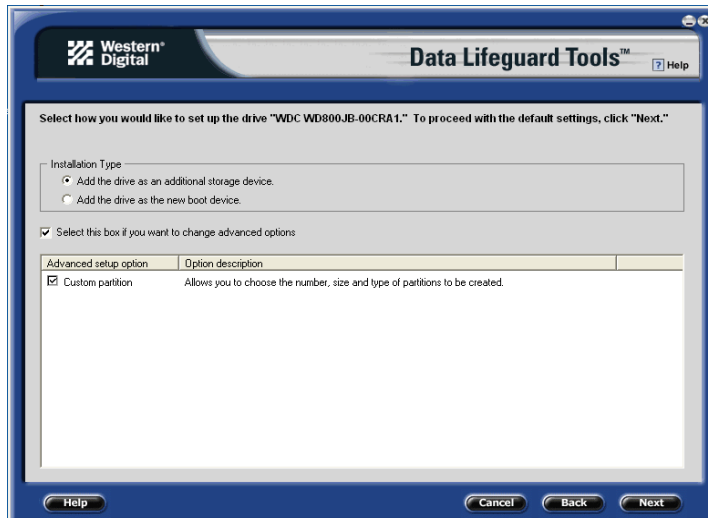


4. After Data Lifeguard Tools has detected your installed hard drive(s), select the new drive that you want to format or partition as the new boot drive and click **Next**. If you are using a Serial ATA host adapter card, click on the **Additional Controllers** tab to select your new drive.

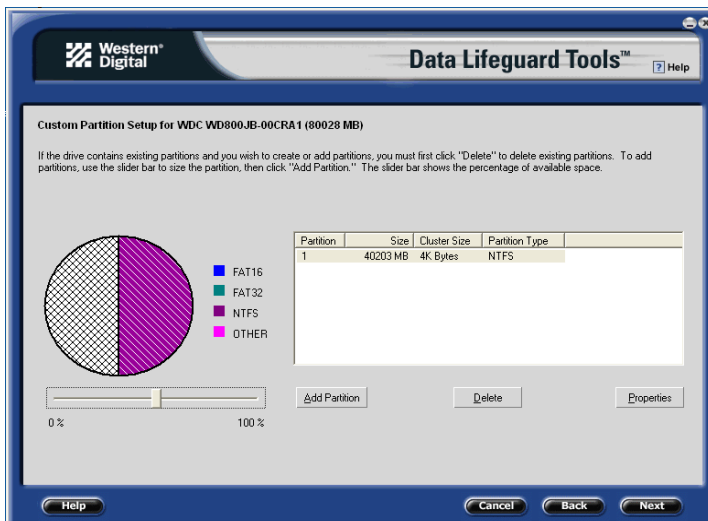


**Note:** Data Lifeguard will not format or partition a currently installed boot drive (the drive icon cannot be selected).

5. Select Installation Type as **Add the drive as a boot device**. If you wish to create customized partitions, select the box to change advanced options and check **Custom Partition**.



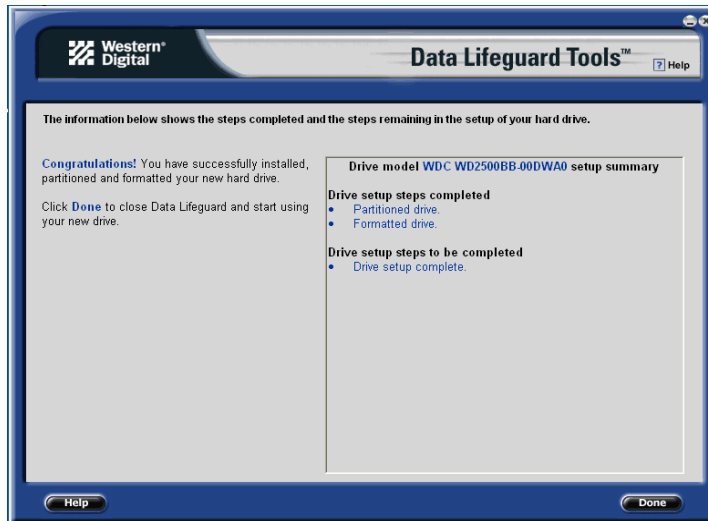
6. The Custom Partition Setup screen below appears. Your hard drive is automatically partitioned to the largest capacity based on your operating system limitations. If the drive contains existing partitions and if you wish to create or add partitions, you must first click **Delete** to remove existing partitions. To add partitions, use the slider bar to size the partition, then click **Add Partition**. After setting the partitions, click **Next**.



7. The next screen outlines your setup options, number of partitions, file format, and the size of each partition. Data Lifeguard is now ready to set up your new hard drive. Click **Erase**, then **Next** to continue.

**Caution:** All existing data on the hard drive will be erased. If you are prompted to continue, click **Yes** to proceed with format and partition.

8. After Data Lifeguard Tools has completed formatting and partitioning the drive, the setup summary screen outlines all of the steps completed. Click **Done** to close or exit.



9. Remove the Data Lifeguard Tools CD from the CD-ROM drive and choose from the following options:
  - a) If installing Windows, insert the Windows installation CD to boot from the CD-ROM drive and restart the system. Follow the on-screen instructions to install the operating system.

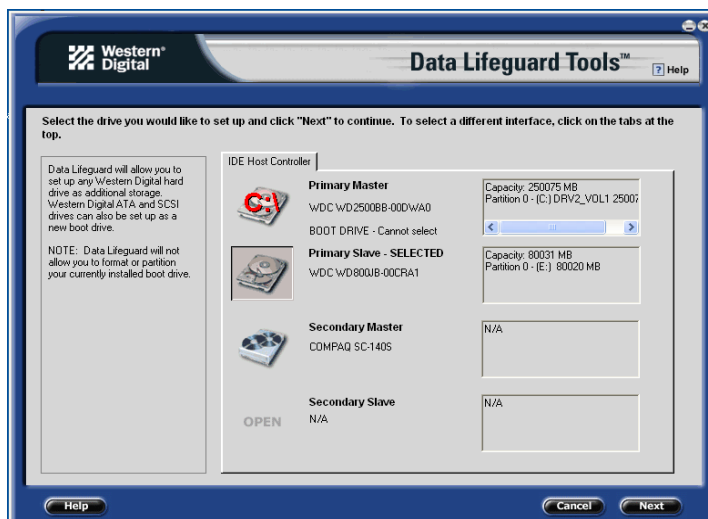
*Note:* Windows installation will inform you that there is an existing partition on the drive. Since the drive has been previously set up using Data Lifeguard Tools, you can bypass this function and proceed directly with Windows installation.
  - b) If an operating system has already been installed, restart the system.
10. This concludes the hard drive setup process. Your Western Digital hard drive is now ready to use.

## Install an Additional Storage Drive

1. Insert the Data Lifeguard Tools CD into your CD-ROM drive.
  - a) If using the DOS version, restart the computer and boot from the CD.
  - b) If using the Windows version, the CD autoruns on your desktop.
2. Select **Run Data Lifeguard Installation Software** from the setup menu.
3. The main menu appears after Data Lifeguard has loaded. Click on **Set Up Your Hard Drive** from the list of available options. Data Lifeguard will take several moments to scan for all of your system devices.

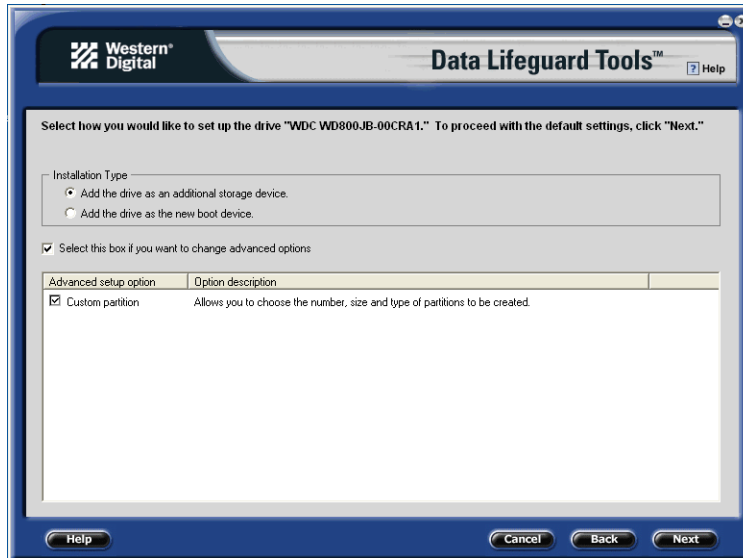


4. After detecting your installed hard drives, select the drive that you want to format or partition as additional storage and click **Next**. If you are using a Serial ATA host adapter card, click on the **Additional Controllers** tab to select your new drive.

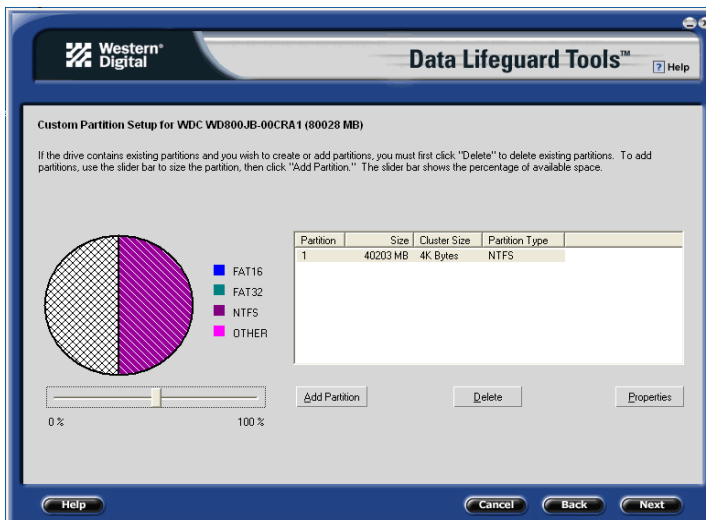




5. Select Installation Type as **Add the drive as an additional device**. If you wish to create customized partitions, select the box to change advanced options and check **Custom Partition**.



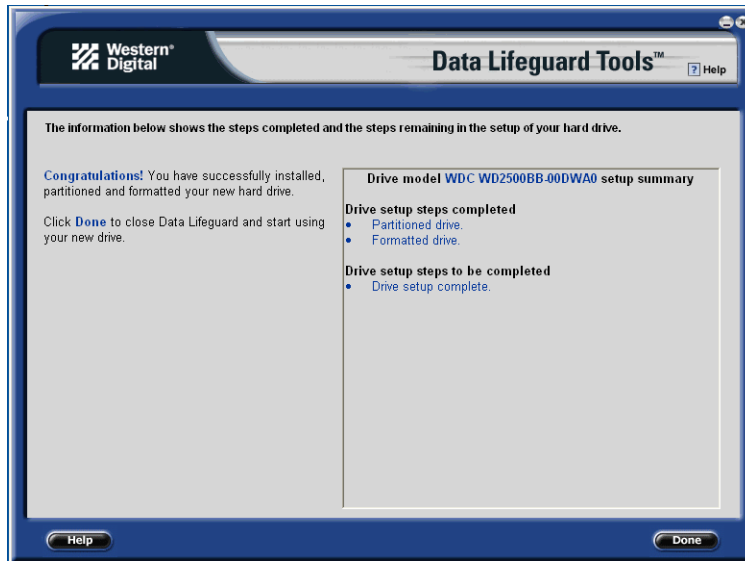
6. The Custom Partition Setup screen appears. Your hard drive is automatically partitioned to the largest capacity up to 137 GB based on your operating system limitations. If the drive contains existing partitions and if you wish to create or add partitions, you must first click **Delete** to remove existing partitions. To add partitions, use the slider bar to the desired size of the partition, then click **Add Partition**. After configuring the partitions, click **Next**.



7. The next screen outlines your setup options, number of partitions, file format, and the size of each partition. Data Lifeguard Tools is now ready to set up your new hard drive. Click **Erase** then **Next**.

**Caution:** Continuing will erase all existing data on the hard drive. If you are certain, click **Yes** to proceed with format and partition.

8. After Data Lifeguard Tools has completed formatting and partitioning the drive, the setup summary screen outlines all of the steps completed. Click **Done** to exit the software.



9. Remove the CD from the CD-ROM drive to begin using your new Western Digital hard drive as additional storage. A new drive letter and icon will appear under **My Computer**.
10. This concludes the hard drive setup process. Your Western Digital hard drive is now ready to use.

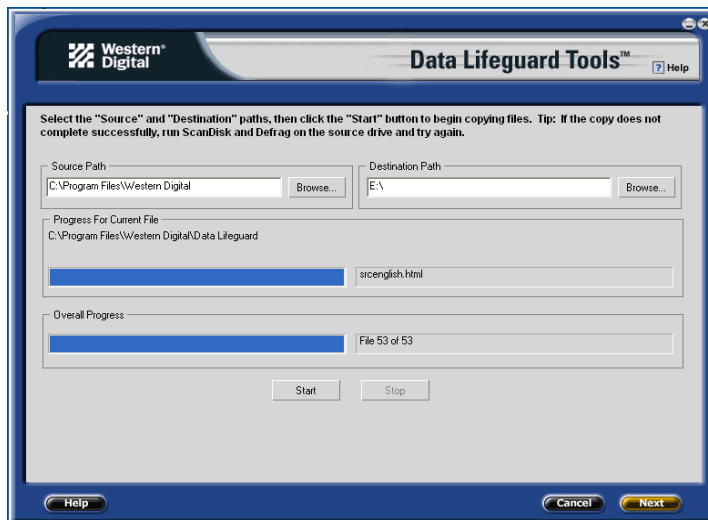
## Drive-to-Drive Copy Utility

The Drive-to-Drive Copy utility enables you to copy files from one drive to another. This feature is useful if you wish to replace your existing bootable hard drive with a newer, faster hard drive.

1. Insert the Data Lifeguard Tools CD into your CD-ROM drive. Select **Drive-to-Drive Copy** from the main menu.
2. Select the **Source** and **Destination** paths with the selected folders. You can click on **Browse** to easily access the folder or files on both hard drives.

*Note:* Existing files on the destination hard drive will be overwritten if there are files on the source drive with the same name.

3. When you have selected the folder for each path, click **Start** to begin drive copy. The progress bar for the current file being copied and the overall progress is displayed.

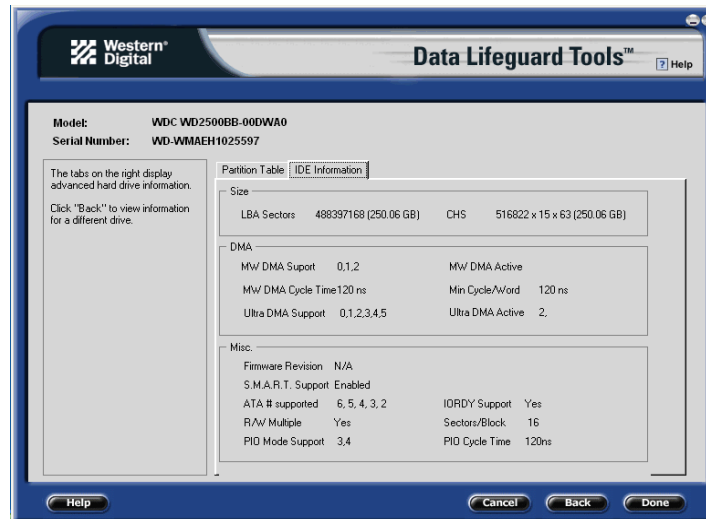


4. When copy operation is complete, click **OK** to display the results summary. Click **Done** to exit Data Lifeguard Tools.
5. Remove the CD and restart the computer to use your new Western Digital hard drive.

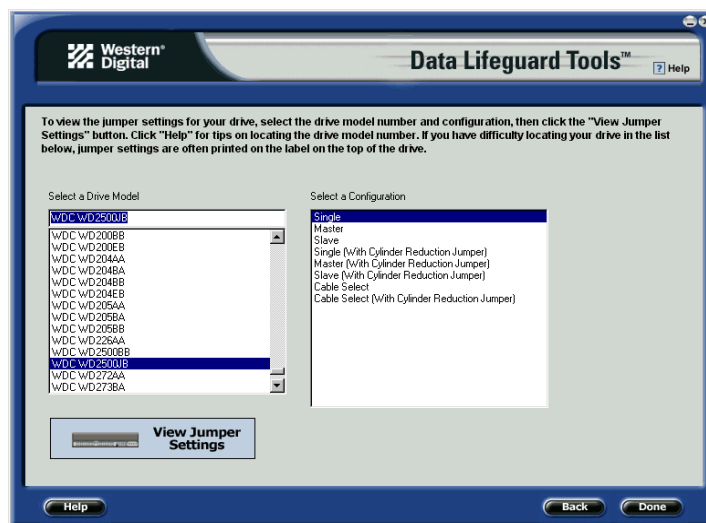
## Hard Drive Information

This feature allows you to view the drive model, serial number, capacity, UDMA mode, and other details about the selected hard drive.

1. Insert the Data Lifeguard Tools CD into your CD-ROM drive. Select **Hard Drive Information** from the main menu.
2. In the next window, you are given options to either select **View Hard Drive Information** or **View Jumper Settings**.
  - a) *View Hard Drive Information* - Once your drive is detected, click on the tabs for either **Partition Table** or **SATA Information** to display data regarding the type of drive format, LBA support, DMA support, firmware revision, etc.



- b) *View Jumper Settings* - To view the jumper settings for your drive, select the drive model number and configuration, then click **View Jumper Settings**. The selected jumper setting diagram will display in your default Web browser.



## **Alternate Instructions for Installing a Drive (Windows XP/2000)**

If your hard drive kit did not include a Data Lifeguard Tools CD, you can use Windows's built-in Disk Management utility to format and partition your drive. Follow the instructions below according to your operating system. If necessary, refer to your operating system manual.

### **Install a Single Hard Drive:**

1. Boot to the Windows XP or Windows 2000 Installation CD.
2. Follow the directions in the installation prompt.

### **Install an Additional Hard Drive in Windows:**

#### *Windows XP*

1. Click the **Start** button and point to **Control Panel > Performance and Maintenance > Administrative Tools**.
2. Double-click on the **Computer Management** icon and select **Disk Management** on the left side.
3. Right-click on your new hard drive and proceed with partitioning and formatting.

#### *Windows 2000*

1. Click the **Start** button and point to **Settings > Control Panel > Administrative Tools**.
2. Double-click on the **Computer Management** icon and select **Disk Management** on the left side.
3. Right-click on your new hard drive to proceed with partitioning and formatting.

## 4

## Troubleshooting

This section contains information on the following topics:

- Advanced Jumper Settings
- Frequently Asked Questions
- Western Digital Service and Support Information

### Advanced Jumper Settings

Western Digital Serial ATA hard drives ship with a jumper shunt in the Default position (across pins 1 and 2). It is not necessary to move the jumper shunt on the drive for workstation/desktop use. For enterprise storage environments, use the following advanced settings:

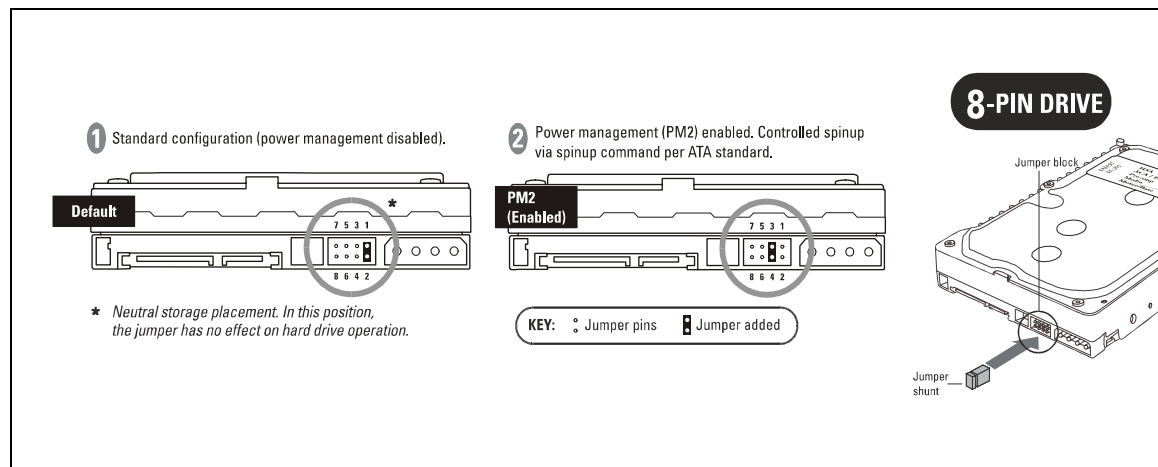
**SSC\_DIS Mode (Default)** – Spread spectrum clocking feature enabled or disabled. Default setting is disabled or jumper shunt is placed on pins 1 and 2. Removing the jumper shunt will enable spread spectrum clocking feature.

**PM2 Mode** – To designate the drive as power-up in standby (power management 2 or PM2) enabled, install the jumper shunt on pins 3 and 4. The mode enables controlled spinup, mainly used for server/workstation environments operating in multiple drive configurations.

**IMPORTANT:** PM2 mode requires a compatible BIOS that supports this feature. If PM2 is enabled and not supported by BIOS, the drive will not spin up and therefore will not be detected by the system.

**OPT1** - Factory use only.

**OPT2** - Factory use only.



Jumper Settings for Western Digital Serial ATA Hard Drives

## Frequently Asked Questions

The section contains answers to common installation questions. To search the Western Digital technical support knowledge base and to view the complete list of FAQs, visit our support Web site at [support.wdc.com](http://support.wdc.com).

### Q: Why does my computer hang or receive error messages on startup?

A: Make sure that the drive's power and SATA cables are properly connected. If the Serial ATA host adapter card is installed in a 64-bit PCI slot on the system motherboard, move the card to a 32-bit slot.

### Q: Why does my drive not power up?

A: Verify that only one power cable (either SATA or legacy) is connected to the drive. Check to see that the power connector and SATA interface cable are securely attached and that the SATA host adapter card is properly seated in the PCI slot.

### Q: Why are jumper settings not required for my Serial ATA drive on my desktop system?

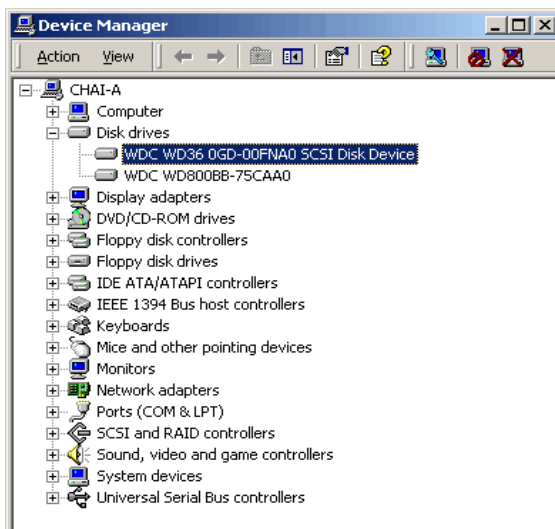
A: The Serial ATA interface connects each drive in a point-to-point configuration with the built-in SATA port on the motherboard or with the SATA host adapter card; therefore eliminating the master/slave relationship as required with EIDE. Each drive utilizes its own cable for data transfer rates. Jumper settings for Western Digital Serial ATA hard drives are mainly used for enterprise storage environments.

### Q: Why does Windows recognize the drive as "SCSI" when it is Serial ATA?

A: Most third party controller cards and RAID adapters are recognized as a SCSI device under Device Manager. This is normal and will not affect your drive or system performance.

### Q: How do I verify if my Serial ATA drive is recognized by my system?

A: Right-click on the My Computer icon, select **Properties**, left-click on the **Hardware** tab, and click on **Device Manager** in the window. Double-click on **Disk Drives**. Your new Western Digital Serial ATA drive should be listed as "SCSI Disk Device" or "Serial ATA Disk Device." If not, make sure that all cables are securely attached and that your system BIOS has been properly configured.



## Western Digital Service and Support

If you need additional information or help during installation or normal use of this product, visit our product support Web site at [support.wdc.com](http://support.wdc.com).

- **Warranty Services** - Obtain warranty information, warranty status, extended warranty, product replacement, RMA status and shipping and packaging information.
- **Downloads Library** - Download diagnostic and installation software (Data Lifeguard Tools) and drivers.
- **Technical Information** - Get product specifications, diagnostic error codes, jumper settings, technical tips, and online forum.
- **Knowledge Base** - Explore our expert knowledge base and Frequently Asked Questions.
- **Service and Support Options** - Service and support options for end user customers in the United States and Canada.
- **Contact Support** - Contact our support representative by phone or e-mail.

When calling for support, have your Western Digital hard drive serial number, system hardware, and software versions available.

	<b>USA/Canada/Outside USA (Central Time)</b>	<b>Europe (Central European Time)</b>
Telephone Numbers	800.ASK.4WDC	+31.20.446.7651
Monday - Thursday	9:00 am - 7:00 pm	9:30 am - 12:00 noon 1:00 pm - 5:30 pm
Friday	9:00 am - 5:00 pm	9:30 am - 12:00 noon 1:00 pm - 4:00 pm
Saturday	8:00 am - 5:00 pm	



**5**

# Appendix

## Regulatory Compliance

This appendix contains information on the following topics:

- Agency Approvals
- Radio Frequency Interference Statement
- Warranty Information

### Agency Approvals

Western Digital hard drives meet the standards of the following regulatory agencies:

#### **Federal Communication Commission (FCC)**

Verified to comply with FCC Rules for Radiated and Conducted Emission, Part 15, Subpart B, for Class B Equipment.

#### **Underwriters Laboratories (UL)**

UL-Standard 1950, Standard for Safety of Information Technology Equipment including Electrical Business Equipment (File E101559).

#### **Canadian Standards Association (CSA)**

CSA-Standard C22.2, No. 950-95, Standard for Safety of Information Technology Equipment including Electrical Business Equipment (File LR68850).

#### **TUV Essen Laboratories**

IEC-950 (EN60950) Standard for Safety of Information Technology Equipment including Electrical Business Equipment.

#### **CE Compliance For Europe**

Verified to comply with EN55022:1998 for RF Emissions and EN55024:1998 for Generic Immunity as applicable.

## Radio Frequency Interference Statement

### FCC Notice

This Western Digital product has been verified to comply with the limits for a Class B computing device pursuant to Part 15, Subpart B of FCC rules. This does not guarantee that interference will not occur in individual installations. Western Digital is not responsible for any television, radio, or other interference caused by unauthorized modifications to this product.

If interference problems do occur, consult the system equipment owner's manual for suggestions. These suggestions may include relocation of the computer system away from the television or radio, or placing the computer AC power connection on a different circuit or outlet.

## CSA Notice

Le prent appareil numérique n'émet pas de bruits radioélectriques dépassant les limites applicables aux appareils numériques de la classe B prescrites dans le Règlement sur le brouillage radioélectrique édicté par le ministère des Communications du Canada.

This digital apparatus does not exceed the Class B limits for radio noise for digital apparatus set out in the Radio Interference Regulations of the Canadian Department of Communications.

## Warranty Policy and Limitations

Western Digital (WD) values your business and always strives to provide you the very best of service. No limited warranty is provided by WD unless your WD Product (Product) was purchased from an authorized distributor or authorized reseller. Distributors may sell Products to resellers who then sell Products to end users. See below for warranty information or obtaining service. No warranty service is provided unless the Product is returned to an authorized return center in the region (Americas, Europe-Middle East-Africa, or Asia Pacific) where the Product was first shipped by WD.

**IMPORTANT:** If your Product was originally purchased as a component integrated within a system by a system manufacturer, no limited warranty is provided by WD. Contact the place of purchase or the system manufacturer directly for warranty service.

## Return Material Authorization

No Product may be returned directly to WD without first contacting WD for a Return Material Authorization (RMA) number. An RMA number may be obtained from our online support Web site at [support.wdc.com](http://support.wdc.com). An unauthorized return, i.e. one for which an RMA number has not been issued, will be returned to you at your expense. Authorized returns are to be shipped pre-paid and insured to the address on the RMA in an approved shipping container. Your original box and packaging materials should be kept for storing or shipping your Product. For information on approved shipping containers, visit our product support Web site at [support.wdc.com](http://support.wdc.com).

## Extended Warranty

Customers can purchase an extended warranty on internal WD products with less than a 3-year warranty. The maximum warranty period for these products, including any warranty extension, cannot be longer than 3 years from the date of manufacture. Extended warranty is currently available for purchase online at [support.wdc.com](http://support.wdc.com).

## Warranty Limitations

WD's limited warranty provides that, subject to the following limitations, each Product will be free from defects in material and workmanship and will conform to WDC's specification for the particular Product.

### **Limitation of Remedies**

Your exclusive remedy for any defective Product is limited to the repair or replacement of the defective Product.

WD may elect which remedy or combination of remedies to provide in its sole discretion. WD shall have a reasonable time after determining that a defective Product exists to repair or replace a defective Product. WD's replacement Product under its limited warranty will be manufactured from new and serviceable used parts. WD's warranty applies to repaired or replaced Products for the balance of the applicable period of the original warranty or ninety days from the date of shipment of a repaired or replaced Product, whichever is longer.

### **Limitation of Damages**

WD's entire liability for any defective Product shall in no event exceed the purchase price for the defective Product. This limitation applies even if WD cannot or does not repair or replace any defective Product and your exclusive remedy fails of its essential purpose.

### **Limited Warranty**

WD's limited warranty provides that, subject to the following limitations, each Product will be free from defects in material and workmanship and will conform to WD's specification for the particular Product.

### **No Consequential or Other Damages**

WD has no liability for general, consequential, incidental or special damages. These include loss of recorded data, the cost of recovery of lost data, lost profits and the cost of the installation or removal of any Products, the installation of replacement Products, and any inspection, testing, or redesign caused by any defect or by the repair or replacement of products arising from a defect in any Product.

In the United States, some states do not allow exclusion or limitation of incidental or consequential damages, so the limitations above may not apply to you. This warranty gives you specific legal rights, and you may also have other rights which vary from state to state.

### **Your Use of the Product**

WD will have no liability for any Product returned if WD determines that:

- The product was stolen from WD.
- The asserted defect:
  - A. is not present,
  - B. cannot reasonably be fixed because of damage occurring when the Product was in the possession of someone other than WD, or
  - C. is attributable to misuse, improper installation, alteration (including removing or obliterating labels), accident or mishandling while in the possession of someone other than WD.

The Product was not sold to you as new.

### **Additional Limitations on Warranty**

Western Digital's warranty does not cover Products which have been received improperly packaged, altered, or physically damaged. Products will be inspected upon receipt. You can view examples of the warranty limitations at [support.wdc.com/warranty](http://support.wdc.com/warranty).