

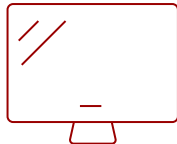
163" 4K ALL-IN-ONE DIRECT VIEW LED DISPLAYS

Key Features

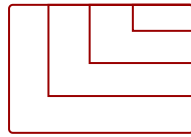
- **STUNNING 4K UHD RESOLUTION:** 4K clarity, vibrant colors, and sharp visuals in any lighting environment.
- **DURABLE COB TECHNOLOGY:** Tight pixel pitch, IP54 dust/moisture resistance, and IK08 impact protection.
- **ALL IN ONE INTEGRATION:** Built in power, control, and image systems for quick, simple installation.
- **FLEXIBLE CONTROL BAR PLACEMENT:** Detachable control bar can be mounted separately (up to 30 ft away) or hidden behind the dvLED with optional accessory kits.
- **EASY FRONT SERVICEABILITY:** Front serviceable LED modules allow for fast maintenance with included suction tool.



163
DISPLAY



PANEL



3840x2160
RESOLUTION



Product Description

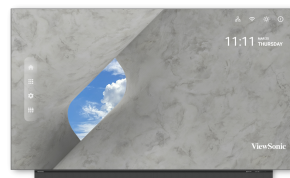
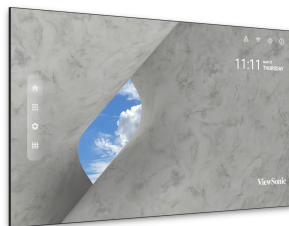
Part of the ViewSonic® LDP Performance Series, the ViewSonic® LDP163-091C all-in-one Direct View LED display delivers the same easy installation and accessibility found in our acclaimed LDM series, but takes visuals to the next level with breathtaking 4K Ultra HD resolution and advanced Chip-on-Board (COB) technology. Built to be a stunning centerpiece in any high-end lobby, boardroom, or auditorium, this 163" Direct View LED display delivers stunning, larger-than-life images. As a true all-in-one solution, the LDP163-091C includes the display, controller, and all components in a single part number, making specification, purchasing, and setup incredibly simple. With a high brightness of 600 nits, an incredible 10,000:1 contrast ratio, and powerful dual 30W speakers, this display provides vibrant, high-impact visuals and immersive sound for an exceptional viewing experience.

Specifications

UPC	766907033168
OS	Android 9.0
GPU	ARM Mali-T860MP4
CPU	RK3399
Memory	4GB DDR4
Storage	Total 32GB (26GB available storage)
Operating System	Android 9.0
CPU	RK3399
GPU	ARM Mali-T860MP4
Memory	4GB
Storage	Total 32GB (26GB available storage)
Internal Speakers	30W x 2
PC Resolution (max)	3840x2160
Mac® Resolution (max)	3840x2160
HDMI 2.0 (with HDCP 2.2)	4
HDMI 2.0 Out	1
3.5mm Audio Out	2
SPDIF	1
USB 3.0	1
USB 2.0	2
USB Type C	1
RS232	1
Ethernet LAN (RJ45)	2
IR in	1
Voltage	100-120V/30A~ 50/60Hz or 220-240V/15A~ 50Hz(vary by country)
Consumption (max)	2154W
Consumption (typical)	647W
Stand-by	<0.5W
On Screen Display	Yes
Remote Control	Yes
Temperature	32-104° F (0 - 40° C)
Humidity (non-condensing)	20-80%
Net (lbs)	511
Gross (lbs)	796
Net (kg)	232
Gross (kg)	361

Packaging (in.)	89.76x42.52x47.24
Physical (in.)	142.2x85.51x1.61
Physical with Wall Mount (in.)	142.2x85.51x2.35
Packaging (mm)	2280x1080x1200
Physical (mm)	3612x2171x41
Physical with Wall Mount (mm)	3612x2172x59.8
Warranty	5-year limited warranty on parts and labor, on-site service
Recycle/Disposal	Please dispose of in accordance with local, state or federal laws.
Package Contents	Power Cord, LAN Cable, IR Extender Cable, Remote Control, Installation Guide, Wall Mount, LD-MK-004, LD-MK-006
Regulations	cTUVus, FCC, RoHS
Display Type	Direct View LED
Screen Size	163
LED Pitch Size (mm)	0.93
LED Grayscale	13 bits
Display Resolution	3840 x 2160
Refresh Rate	3,840Hz
Aspect Ratio	16:9
Static Contrast Ratio	10,000:1
Backlight Life (Hours)	100,000
Brightness	600-nit
Viewing Angles	178° horizontal, 178° vertical
Impact Protection Rating	IK08 (Front)

UPC: 766907033168



Contact Sales
ViewSonic.com
 888.881.8781
 email: salesinfo@viewsonic.com