

Introduction

This document explains the setup procedure for the mPOP.

For further instructions, please refer to the mPOP online manual.

Please read the instructions before using the printer.

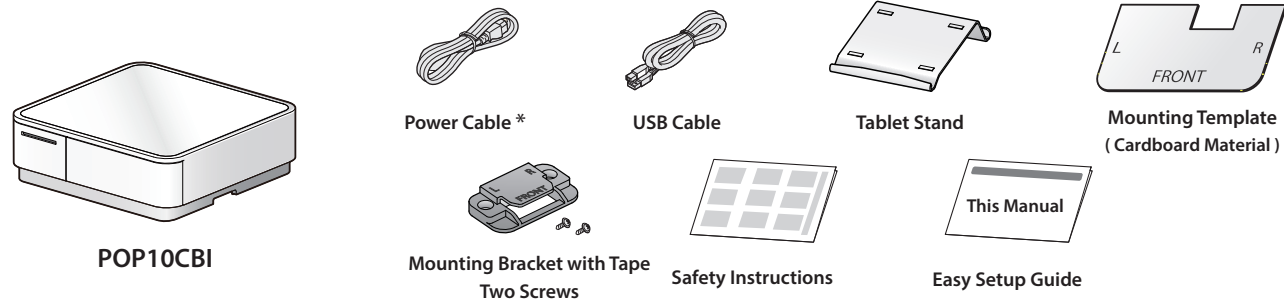
You can also see FAQ from the QR code on the inside of the printer.

- A transparent protective film is affixed to the top surface of mPOP. Remove the film before use.

Check the Supplied Accessories

If any of the package contents are missing or damaged, contact the dealer where the product was purchased.

*accessories vary depending on the region where the printer was purchased.



mPOP online manual

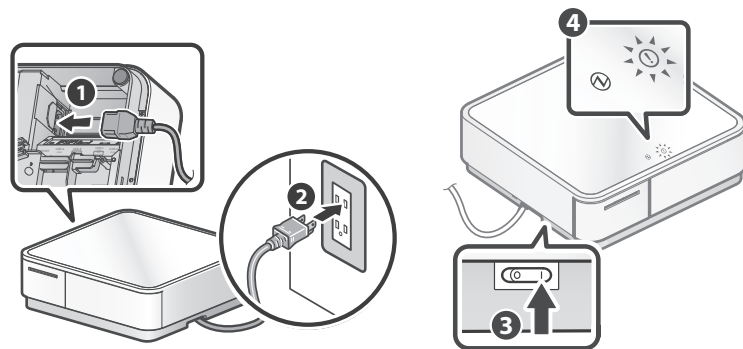


1 Turning ON the Main Unit Power

Connect the included power cable to the inlet on the back side of the product ①.

Connect the plug of the power cable to the outlet ②.

Turn on the power on the side of the main unit ③. Check that the Power LED (green) lights and the Error LED (red) blinks ④.



2-A Connecting a Tablet or PC (For Connecting via a USB Cable)

Prepare and connect an appropriate cable to the connector on the printer according to your device/PC.

When using a commercially available cable, be sure to perform full operation checks before use.

1 USB-C® Communication and Recharge

Use a USB cable that is available commercially or that came with the smartphone or tablet.

- iOS : C to C¹ or C to Lightning^{*2}
- Android : C to C¹

Plug for the mPOP:



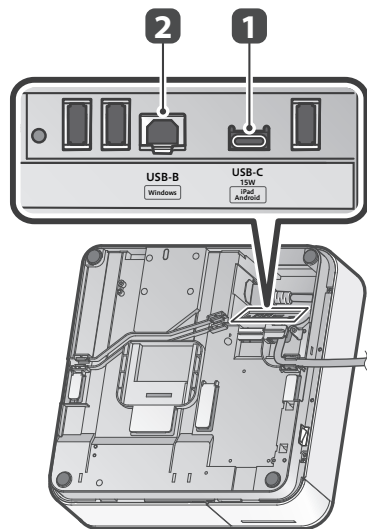
2 USB-B Communication

USB cable included with the product

USB conversion adapter (if necessary)

- Windows, Android, Mac, Linux

Plug for the mPOP:



After connecting the USB cable, refer to the back side for wiring so that the product does not rattle.

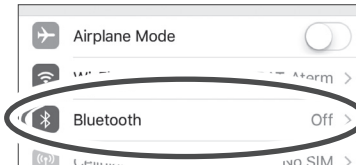
*1 Cable that conforms to USB2.0 standards, supports current of 3.0A or higher, and has a maximum length of 2 m.
*2 Apple genuine cable or MFI certified cable with a maximum length of 2 m.

2-B Connecting a Tablet or PC (For Connecting via Bluetooth)

- ① The device name that is displayed during pairing varies depending on the product. It can be checked from ***Bluetooth Information*** [Dev Name] in the list that is printed at printer test printing. (For test printing, turn power ON while holding down the Multi-Function button.)

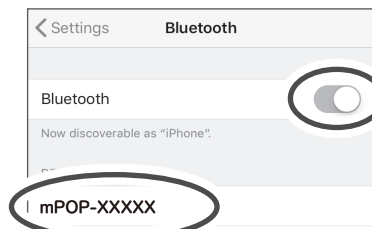
iOS

Open the smartphone/tablet settings screen and select Bluetooth.



Turn on Bluetooth.

Select the displayed device name (mPOP-XXXXX).

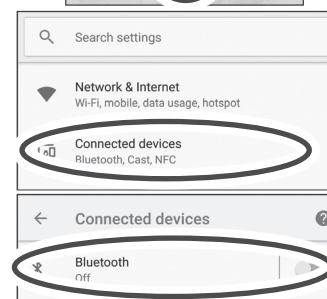
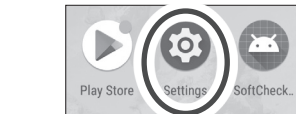


When "Connected" is displayed, pairing is completed.

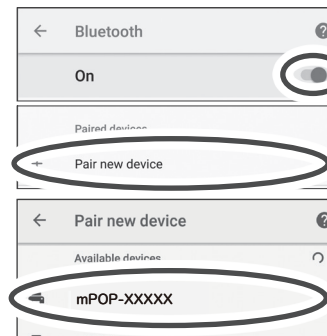
Android

You can easily connect via Bluetooth using Utility. If you use Utility, proceed to 4 "Preparing/setting up the configuration app".

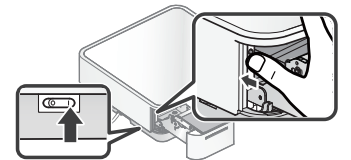
Open the smartphone/tablet Settings - Connected devices and select Bluetooth.



Turn on Bluetooth, and open "Pair new device". Select the displayed device name (mPOP-XXXXX).



When the selected device name is displayed in "PAIRED DEVICES", pairing is completed.

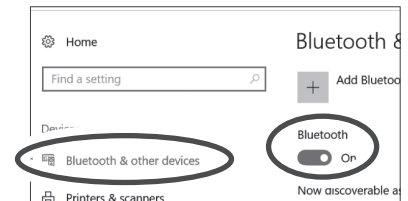


Windows

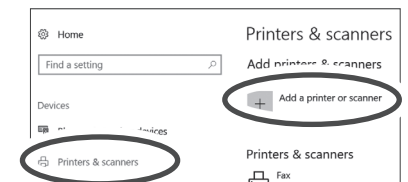
This procedure is for the Windows 10 environment. For other environments, refer to the Online Manual.

Open Settings and select [Devices] - [Bluetooth & other devices].

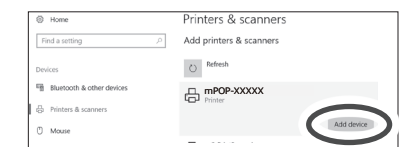
Turn on Bluetooth.



Select [Printers & scanners] - [Add a printer or scanner].



Select the displayed device name (mPOP-XXXXX) and click or tap [Add device].



When the device appears in "Printers & Scanners", pairing is completed.

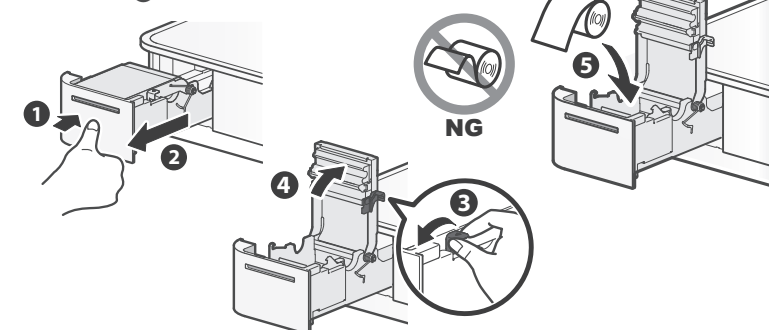
- ① After a few moments, the message "Driver is unavailable" will be displayed, however pairing is completed.

- ① Change the following setting to strengthen security by preventing unauthorized connection from tablets other than that connected. For information on the app to use, see 4 "Preparing/setting up the configuration app" on the back of this manual.

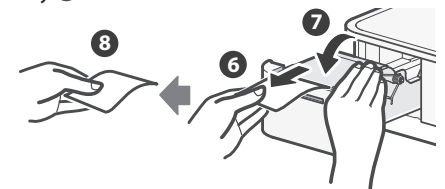
iOS, Android: Start "Star Quick Setup Utility", tap [Printer Settings]-[Bluetooth Settings]. Turn [New Pairing Permission] setting from ON to OFF, and tap [Apply].
Windows: Start "Star Windows Software", change "New Pairing Permission" from "ON" to "OFF" in "Bluetooth Utility", and click or tap "Apply".

3 Inserting a Roll of Paper

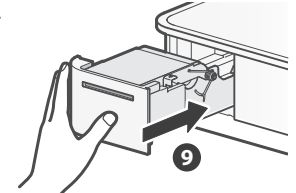
Press the front of the printer to disengage the lock ①, and then pull out the printer ②. Pull the cover opening lever toward you ③, and then open the printer cover ④. Insert a roll of paper in the direction shown in the illustration ⑤.



Pull the end of the paper out straight ⑥, and then close the printer cover ⑦. Remove the piece of paper that is cut automatically ⑧.



Press the printer back into place until a click is heard and the printer locks ⑨.



4 Preparing/setting up the configuration app

Use the configuration app to set up the printer from a tablet or PC.
Scan the QR code on the right side or search the app to access the download site.

Configuration app
download site



When using Android/iOS

Star Quick Setup Utility

- 1 Install [Star Quick Setup Utility].
- 2 Open the configuration utility, and select [Start Guide (Initial Settings)] - [Search Printer].
- 3 Follow the instructions of the utility to connect and set up a tablet.

① Driver download site for Mac / Linux environment. (<https://www.star-m.jp/supportsite-wsw.html>)

When using Windows

Star Windows Software

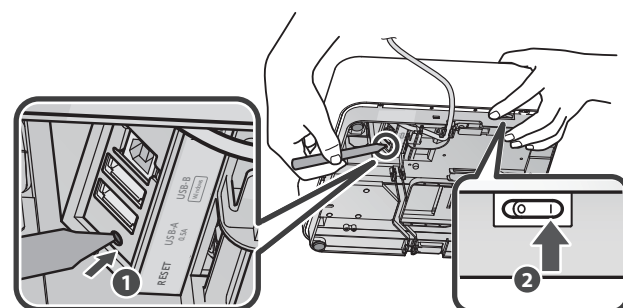
- 1 Download [Star Windows Software].
 - 2 Extract the downloaded software and execute "Setup.exe".
 - 3 Follow the wizard instructions and complete software installation.
- ① The Windows driver is included in the Star Windows Software.
The Star Windows Software can be used to configure the printer settings and perform an operation test.

Initializing Bluetooth settings

If the Bluetooth connection is not successful, follow the procedure below and initialize the Bluetooth setting. After initialization, perform connection again starting from the beginning of Step 2-B on the front page.

《 Procedure 》 Check that the printer power is OFF. While pressing the RESET button on the bottom surface of the device ①, turn the power switch on the side of the device to ON ②, and continue to hold down the RESET button while the printer resets two times*.

*The initial operation sound will be played when the printer is reset.



Connecting the peripheral devices

Connect the specified USB device, tablet / smartphone you want to charge, etc. to the USB connector of the product.

1 USB-A

Communication Designated barcode reader, LCD Display

Recharge Other peripheral devices

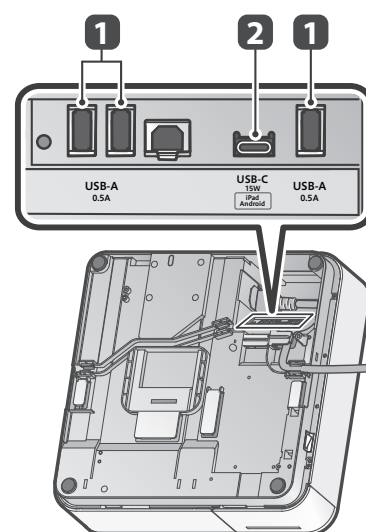
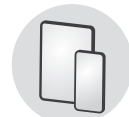
Plug for the mPOP:



2 USB-C

Recharge Tablet or other peripheral device

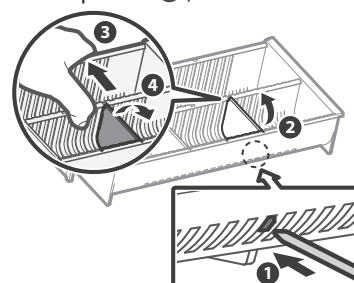
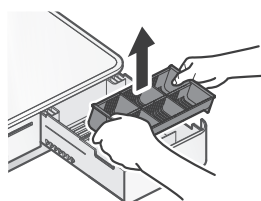
Plug for the mPOP:



Adjusting the Coin Tray

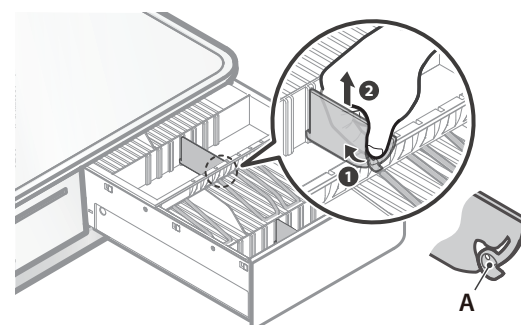
Vertical Bill Type Use your chosen application or other means to open the cash drawer, and then remove the coin tray. Press the hook part on the bottom of the divider with a narrow pointed tool to disengage the lock ①, then lift up the divider ②. Press the coin tray from the inside with your fingers to expand it ③, and then remove the divider ④.

Install the divider in the desired position.



Flat Bill Type (North, Central & South America Only)

Unlock the hook A on the divider ① and lift it up ②. Install the divider in the desired position.

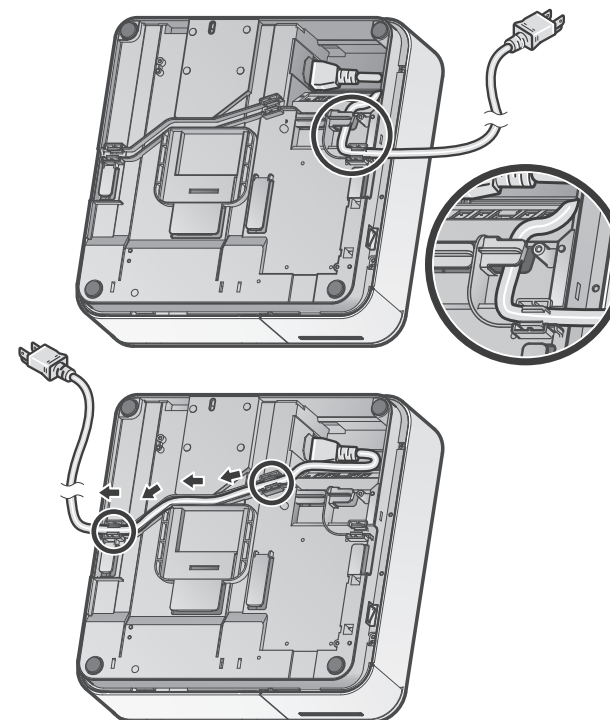


Wiring the Cables

Wire the cables as needed according to the location where the main unit is installed. Turn OFF the main unit power before connecting or disconnecting the cables.

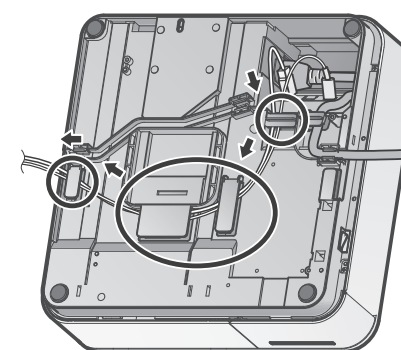
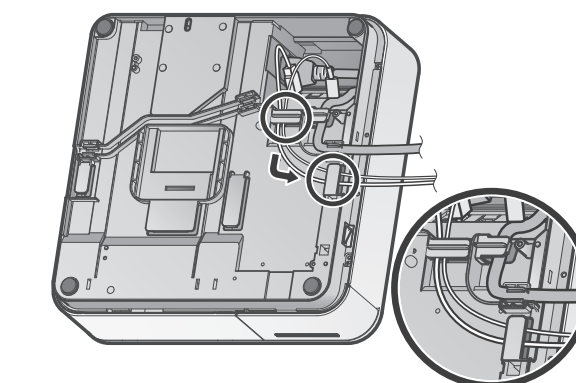
Power Cable

Route the power cable so that it passes under or between the power cable hooks.



USB Cable

Route the USB cable so that it passes under the USB cable hooks.



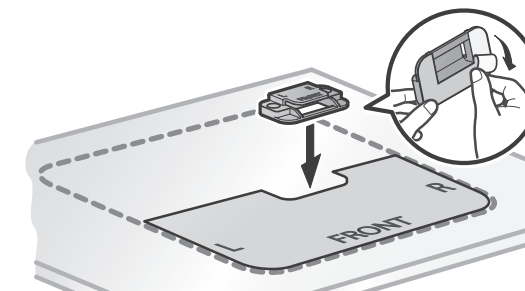
To ensure the main unit is not tilted when installed, beware that cables do not protrude from the hooks while the cables were routed.

Securing the Main Unit

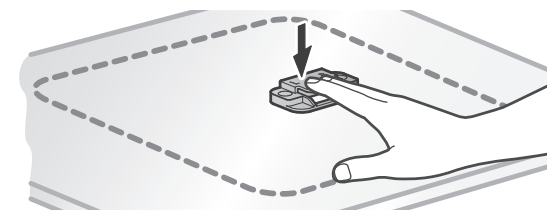
Secure the main unit in order to prevent it from tipping over.

Turn OFF the main unit power, then follow the procedure below.
Select a flat, level location to install the main unit.

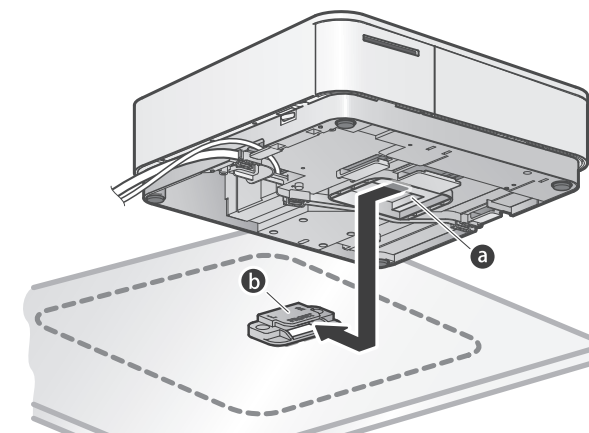
Place the mounting template so that the "FRONT" edge of the mounting template is aligned with the front of the installation position. Remove the liner from the tape on the bottom of the mounting bracket and adhere the mounting bracket in accordance with the mounting template. The tape has strong adhesion. Please carry out the adhering work carefully.



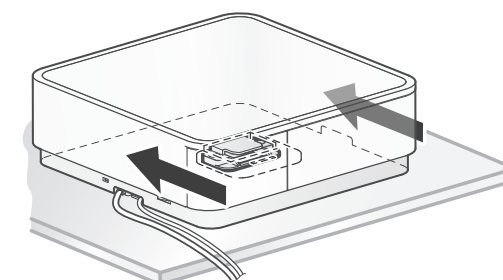
Press the mounting bracket firmly so that the tape is adhered to the surface securely. Remove the mounting template.



Check the position of the slot for mounting bracket a on the bottom of the main unit, and position the main unit so that the slot is in front of the mounting bracket hook b.



Slide the main unit so that the mounting bracket hook enters the slot to secure the main unit in place.



If you want to secure with screws, please refer to the online manual.