

Manual



04-1437A



TAA
Compliant

JJ-E40011-S6

DP CyberSerial 4S PCIe

User Manual



Thank you for choosing **SIIG** for your connectivity needs in IT and AV products. Our products are engineered for optimal performance and reliability. To ensure the best experience and safety, please read the instructions thoroughly and keep this user guide for future reference. For more details about our product range, visit www.siig.com.

If you require technical support, email us at support@siig.com For drivers or manuals, please visit www.siig.com/download



ESD CAUTION

Hardware Installation

Note: For low profile systems, replace the currently mounted bracket with the included low profile bracket.

Since the design of computer cases and motherboards vary, refer to your computer's reference manual for further information, if needed. Static Electricity Discharge may permanently damage your system. Discharge any static electricity build up in your body by touching your computer case for a few seconds. Avoid any contact with internal parts and handle cards only by their external edges.

- Turn OFF the power to your computer.
- Unplug the power cord and remove your computer cover.
- Remove the slot bracket from an available PCIe slot.
- Carefully align the card to the selected PCIe slot push the board down firmly, but gently, until it is well seated.
- Replace the slot bracket holding screw to secure the card.
- Set **J1-J4** jumpers (this step is optional). See **Jumper Settings (J1-J4)** on page **5** for more information.

- Carefully align the card's bus connector with the selected PCIe slot on the motherboard. Push the board down firmly, but gently, until it is well seated.
- Replace the computer cover and reconnect the power cord.
- Connect the 4-port fanout cable to the fanout cable connector on the card.

Key Features

- Compliant with PCI Express Base Specification Revision 2.0a
- PCI Express 1-lane (x1) serial I/O card works with PCI Express slots with different lane width
- Installs in any available PCI Express slot and provides four 9-pin RS232 serial ports via a fan-out cable
- Spare enhanced low profile bracket is included to work in low profile chassis
- 256-byte FIFO buffers dramatically increase data transmit/receive speed and supports data rates up to 921 Kbps
- Works as standard RS232 port or with 5V or 12V power output for devices that require power

Package Contents

- DP CyberSerial 4S PCIe
- Low profile bracket
- 4-Port fanout cable (DB44-pin)
- Voltage jumpers (4pcs)
- Y-Split power cable
- User Manual

Setup Requirements

- PC with an available PCIe 2.0 slot (x1, x4, x8, x16)
- Windows[®] 11 (64-bit) / 10 / 8.x / 7 / Vista / XP (64-/32-bit)
- Windows[®] Server 2019 / 2016 / 2012 R2 / 2012

Layout

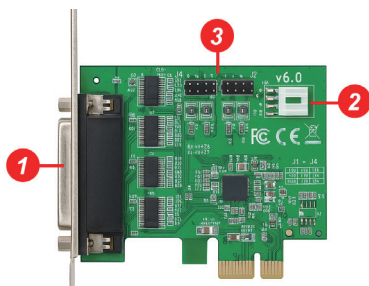


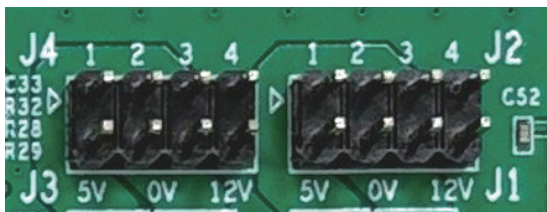
Figure 1: DP CyberSerial 4S PCIe

No.	Connections	Descriptions
1	Fanout cable connector	Connect with 4S fanout cable
2	Power connector*	Connect 4-pin Molex power cable
3	Jumper setting	J1 - J4 setting the power for 0V, 5V and 12V output

Power Connector

*** Note:** If the serial port(s) requires power output, connect the system power source to board's power connector, otherwise leave it unconnected. However, most serial devices do not require additional power through the serial port. Refer to your serial device's manual for more information. The jumpers can be omitted if no power output is required.

Jumper Setting (J1 - J4)



Short 2-3 = 0 volts

Short 1-2 = 5V

Short 3-4 = 12V

4-Port Fan Out Cable



Figure 2: 4-port fanout cable

No.	Connections	Descriptions
1	Board connector	Connect to product fanout cable connector
2	9-pin serial	S1 - S4 4-port 9-pin RS232 connector

Windows Driver Installation

Besides, the card may auto-install using native drivers; however, it is recommended to use the latest drivers version provided on siig.com's website.

1. Navigate to <https://www.sii.com/download>.
2. Search product part number for **JJ-E40011-S6** and then click **Download driver**.
3. Unzip driver folder and save on the PC system desktop.
4. Double click the **AX99100x_Setup.exe** to install the driver.
5. Then click **Install** when appears the installation windows.
6. Follow the installation steps to complete the driver installation.
7. Click **Exit** to terminate the application.

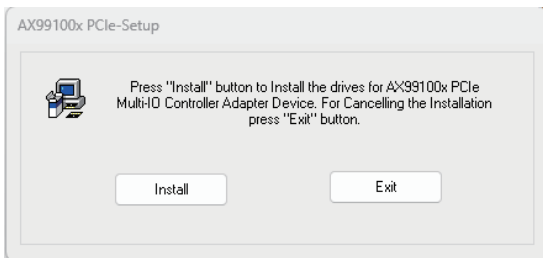


Figure 3: Software installation setp 1

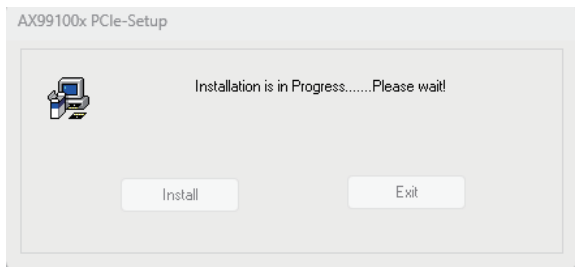


Figure 4: Software installation setp 2

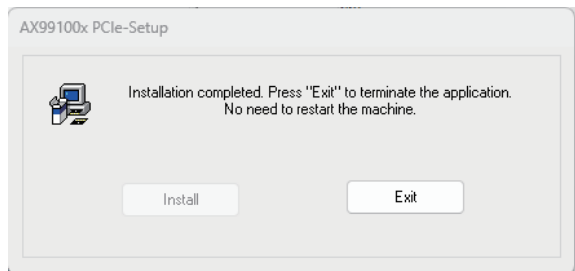


Figure 5: Software installation setp 3

To Verify Installation

1. Right click **This PC, Computer** or **My computer** on the desktop, click **Manage**, then click **Device Manager**.
2. Double click **Multifunction adapters**, and **ASIX PCIe to Multifunction Peripheral Controller** should be displayed.
3. And then double click **Ports (Com & LPT)**, and **ASIX PCIe to High Speed Serial Port (COMx)** should be displayed.

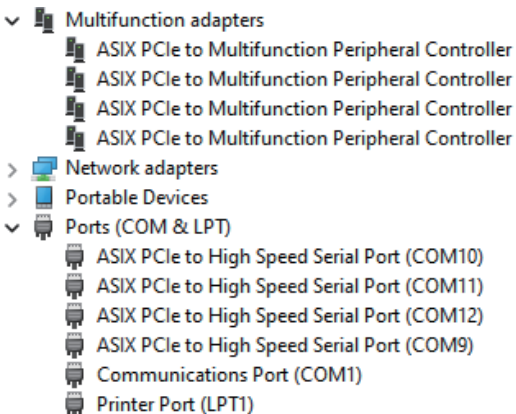


Figure 6: Driver information

Changing COM Port Number

Some serial devices need a specific port in order to work. If your device works properly, do not make any changes.

1. Double click **ASIX PCIe to High Speed Serial Port (COMx)**. Refer to **To Verify Installation** section for more details if needed
2. Click the **Port Settings** tab.
3. Click the **Change Port Number** and down arrow next to the change port number under **Port Settings** table. Select a COM port that is not in use, then click **OK**.
4. Restart your system to take effect.

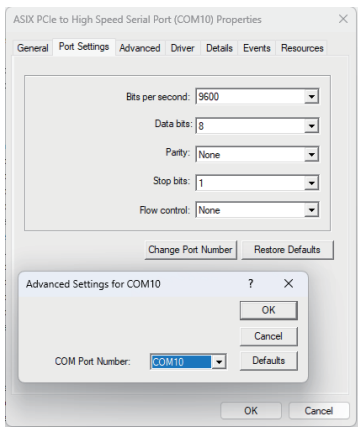


Figure 7: Port Settings

Disclaimer

The product name and brand name may be registered trademarks of related manufacturers. TM and ® may be omitted on the user's manual. The pictures on the user's manual are just for reference, and there may be some slight differences with the actual products. We reserve the right to make changes without prior notice to a product or system described hereinto improve reliability, function, or design.



Thank you for your purchase!

<https://www.siig.com>



Please visit SIIG Support



Please visit Product page