

1U/ 2U/ 3U Fixed 19" Adjustable Depth Universal Server Rack Rails

UNIRAILS1U / UNIRAILS2U / UNIRAILS3U

DE: Bedienungsanleitung - de.startech.com

FR: Guide de l'utilisateur - fr.startech.com

ES: Guía del usuario - es.startech.com

IT: Guida per l'uso - it.startech.com

NL: Gebruiksaanwijzing - nl.startech.com

PT: Guia do usuário - pt.startech.com

Packaging Contents

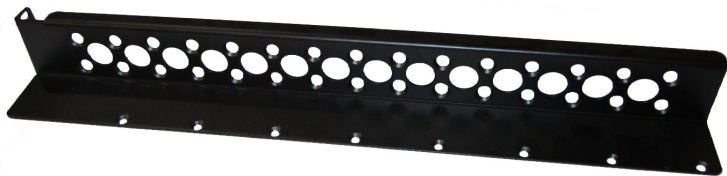
- 1x Set Universal Rack Rails
- 8/16/14 x M5 Panel Screws (1U/2U/3U)
- 8/16/14 x M5 Cage Nuts (1U/2U/3U)
- 1x M5 Wrench

Installation

1. Determine the mounting depth of the rack/cabinet.
2. Gather the components of the two side rails. Each side rail is comprised of 3 pieces: two End Rails with the rack mounting brackets and the flat middle section with the adjustable slide cut outs.

NOTE: Look carefully at the End Rails, as there are two different sets. The lip along the top edge will be taller on one set, than the other. The side rails use one of each.

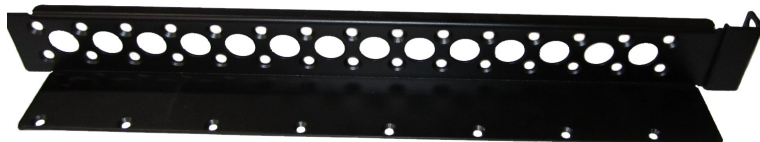
End Rail #1



Sliding Rail



End Rail #2



*installation photos are for reference only



*actual product may vary from photos

System Requirements

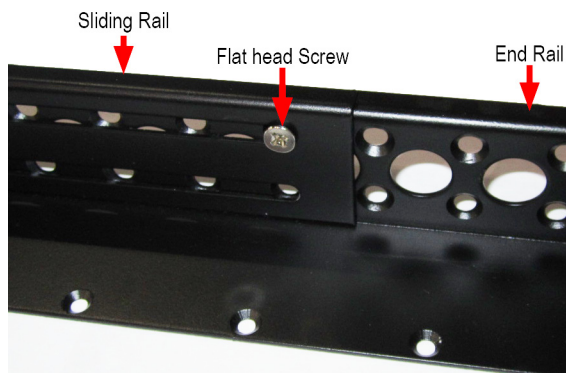
- Standard 19in wide rack
- 1U/ 2U/ 3U of rack space

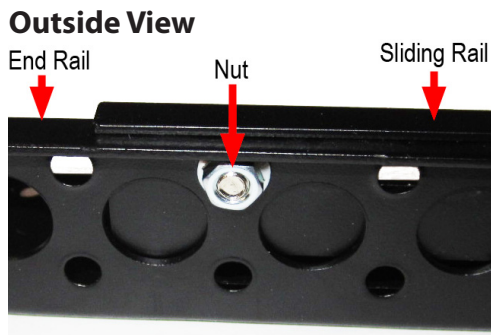
Tools Required

- Phillips screwdriver

3. Lay out the two End Rails end-to-end (rack mounting bracket at opposite ends), and then place the Sliding Rail over top of the smaller of the End Rail (see "Inside View" photo for reference). Place the other End Rail ovetop the Sliding Rail, so it is now sandwiched between the two End Rails.
4. Adjust the length of the rails, such that the rack mounting brackets are slightly longer than the mounting depth of the rack.
5. Fasten the middle Sliding Rail to each End Rail with 4 screws and nuts each (2 on the top slide and 2 on bottom) with a screwdriver and the provided wrench. The screw should go in from the inside of the rail, with the nut on the outside (underneath the lip).

Inside View

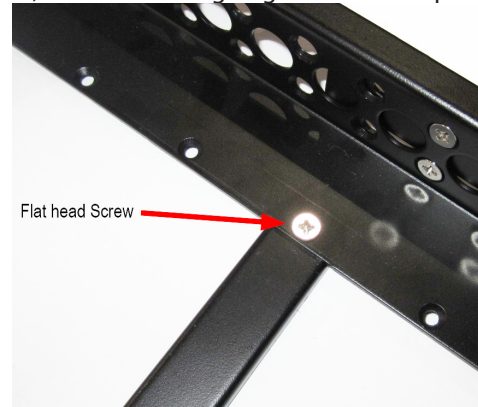




NOTE: If possible, do not have the screws go through all 3 Rails, as this will prevent the rails from sliding. If possible, try to only have the screws go through the Sliding Rail and one End Rail.

- Once one rail is complete, assemble the second rail. The length of both rails should be identical.
- Once both rails are complete, line them up side-by-side, with the rack mounting brackets facing outwards. Place the cross braces between the two rails. Ideally, the braces should be equally spaced along the length of the rails, but can be arranged in any configuration depending on the equipment the rails will be holding in the rack.

- Fasten the ends of the cross braces to the side rails with the flat head screws. The braces should go underneath the flat base of the side rails, with the screw going in from the top.



- Once the cross braces are firmly attached, the completed unit can be mounted into the cabinet/rack. The cable manager is mounted at the same time and is simply placed over the rack mounting brackets then both are fastened to the rack posts.
- NOTE:** Make sure to firmly tighten the screws/nuts in the side rails once the unit is mounted into the rack, as you may have had to loosen them to installed the rails into the rack.

Specifications

	UNIRAILS1U	UNIRAILS2U	UNIRAILS3U
Descriptions	1U Fixed 19" Adjustable Depth Universal Server Rack Rails	2U Fixed 19" Adjustable Depth Universal Server Rack Rails	3U Fixed 19" Adjustable Depth Universal Server Rack Rails
Mounting Height	1U	2U	3U
Material	SPCC		
Color	Black		
Weight Capacity	25kg / 55lbs	45.25kg / 100.0lbs	97.28kg / 215.0lbs
Max/Min Mounting Depth	420mm / 1054mm		
Dimensions	465.0mm x 44.0mm	465.0mm x 88.0mm	465.0mm x 132.0mm
Weight	2600g	3680g	3760g
Certifications	RoHS, CE		

Use of Trademarks, Registered Trademarks, and other Protected Names and Symbols

This manual may make reference to trademarks, registered trademarks, and other protected names and/or symbols of third-party companies not related in any way to StarTech.com. Where they occur these references are for illustrative purposes only and do not represent an endorsement of a product or service by StarTech.com, or an endorsement of the product(s) to which this manual applies by the third-party company in question. Regardless of any direct acknowledgement elsewhere in the body of this document, StarTech.com hereby acknowledges that all trademarks, registered trademarks, service marks, and other protected names and/or symbols contained in this manual and related documents are the property of their respective holders.

Technical Support

StarTech.com's lifetime technical support is an integral part of our commitment to provide industry-leading solutions. If you ever need help with your product, visit www.startech.com/support and access our comprehensive selection of online tools, documentation, and downloads.

For the latest drivers/software, please visit www.startech.com/downloads

Warranty Information

This product is backed by a lifetime warranty.

In addition, StarTech.com warrants its products against defects in materials and workmanship for the periods noted, following the initial date of purchase. During this period, the products may be returned for repair, or replacement with equivalent products at our discretion. The warranty covers parts and labor costs only. StarTech.com does not warrant its products from defects or damages arising from misuse, abuse, alteration, or normal wear and tear.

Limitation of Liability

In no event shall the liability of StarTech.com Ltd. and StarTech.com USA LLP (or their officers, directors, employees or agents) for any damages (whether direct or indirect, special, punitive, incidental, consequential, or otherwise), loss of profits, loss of business, or any pecuniary loss, arising out of or related to the use of the product exceed the actual price paid for the product. Some states do not allow the exclusion or limitation of incidental or consequential damages. If such laws apply, the limitations or exclusions contained in this statement may not apply to you.