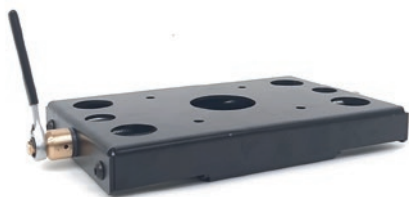
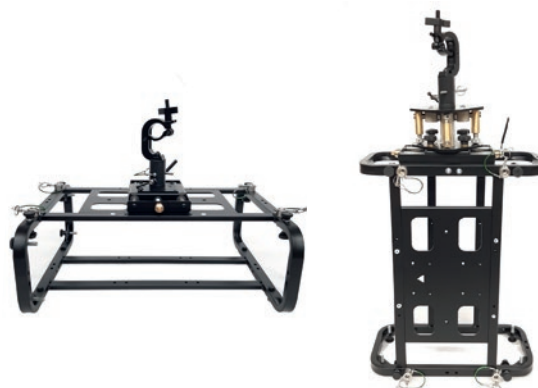


# ELPMB85 Rail Adaptor

V12H006AT0



Usage examples:



Projector frame, clamp and tilt adaptor not included.

The ELPMB85 is a rail adaptor for ELPMB76 and ELPMB84 stacking and rigging frames. This allows the projector to be moved closer / further from the projected image with a high level of precision.

Material	Steel and brass
Finish	Powder coating
Dimensions (W x L x H) (mm)	346 x 180 x 40
Weight (kg)	3.8
Colour	Black, silver and gold
Maximum load (kg)	410

## Compatible accessories

ELPMB68 – Ceiling Mount – V12H006AE0

ELPMB76 – Stacking Frame for EB-PU1000 Series – V12H006AN0

ELPMB78 – Portrait Adaptor – V12H006AQ0

ELPMB81 – Tilt Adaptor – V12H006AT0

ELPMB84 – Stacking Frame for EB-PU2200 Series – V12H006AW0

Projector frame, clamp and tilt adaptor not included.  
Technical specifications are subject to change.

**EPSON**<sup>®</sup>