

# Quick Start Guide

## Terms & Conditions

Read this document before operating the product

Read this document before operating the mobile device, accessories, or software (defined collectively and individually as the "Product") and keep it for future reference. This document contains important Terms and Conditions. Electronic acceptance, opening the packaging, use, or retention of the Product constitutes acceptance of these Terms and Conditions.

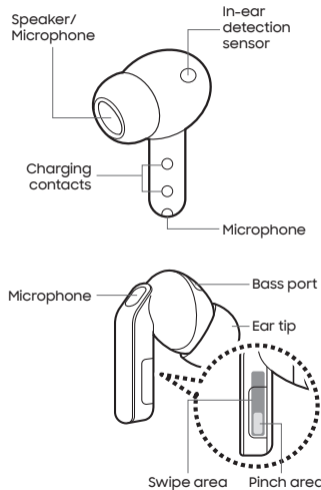
## SAMSUNG Galaxy Buds4 Pro

Buds rated IP57: Dust-protected. Tested for submersion in up to 3 feet of fresh water for up to 30 minutes.



QR code for Samsung use  
Printed in Korea  
GH68-57736A\_REV\_1.1

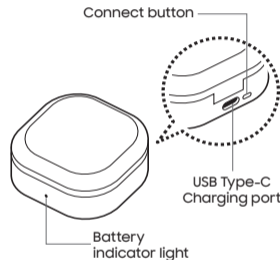
### Your device



### Get started

#### Charge your buds

Use a USB-C cable and USB Type-C adapter (both sold separately).



You can also charge the buds using an optional wireless charging pad (not included).

Use only compatible charging devices and accessories. Damage caused by use of accessories which are not compatible may not be covered by warranty.

### Pair with a device

To start pairing, put the buds in the case, and then close and reopen the case. Check the paired device and follow the instructions.

To connect to another device, open the case, and then press the **Connect** button for 3 seconds.

#### Manage your buds

Buds features are managed in device settings or the Wearable app.

- Galaxy devices with One UI 8.0 or above are managed in settings.
- Galaxy devices with earlier One UI versions, and other Android devices use the Wearable app.



To download the Wearable app, scan the code or visit [samsung.us/galaxywearable](https://samsung.us/galaxywearable)

If your paired Galaxy device receives an upgrade to One UI 8.0 or above, buds features will move from the Wearable app to settings.

### Do more

#### Your Samsung account

Do everything Samsung with one account. Sign in at [samsung.us/mypage](https://samsung.us/mypage) to connect all your devices, use the latest features, and access exclusives, plus product support, order tracking, and more.

#### Get the best fit

Your device includes extra ear tips in the box to customize your fit.



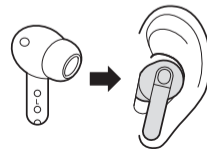
For a video about changing the ear tips, scan the code or visit [samsung.com/us/support/answer/ANS10007665/](https://samsung.com/us/support/answer/ANS10007665/)

#### Learn how to wear your buds

Refer to the Left (L) and Right (R) marks to insert the buds into the correct ear. Position the bud so that the bottom is angled forward, adjusting so the fit is comfortable. Blade should point toward the mouth for best call quality.



For info about wearing the buds, scan the code or visit [samsung.com/us/support/answer/ANS10007667/](https://samsung.com/us/support/answer/ANS10007667/)



# Terms & Conditions

## Important legal information

Read this document before operating the mobile device, accessories, or software (defined collectively and individually as the "Product") and keep it for future reference. This document contains important Terms and Conditions. Electronic acceptance, opening the packaging, use, or retention of the Product constitutes acceptance of these Terms and Conditions.

You can obtain a copy of the complete Terms and Conditions and Samsung Standard One-year Limited Warranty by contacting Samsung at the address or phone number provided in this document.

Dispute Resolution Agreement - This Product is subject to a binding Dispute Resolution Agreement, which includes arbitration terms, between you and SAMSUNG ELECTRONICS AMERICA, INC. ("Samsung"). You can opt out within 30 calendar days of purchase: email [optout@sea.samsung.com](mailto:optout@sea.samsung.com) or call 1-800-SAMSUNG (726-7864) and providing the applicable information.

The Dispute Resolution Agreement, Standard One-year Limited Warranty, End User License Agreement (EULA), and additional Health, Safety and Device care information, including:

- Device Temperature
- Samsung Knox security platform
- Maintaining Dust and Water Resistance (IP rating)
- Location, Navigation, GPS and AGPS
- Wireless Emergency Alerts (WEA)
- Hearing Aid Compatibility (HAC)

are available at:

English: [www.samsung.com/us/support/legal/mobile](http://www.samsung.com/us/support/legal/mobile)

Spanish: [www.samsung.com/us/support/legal/mobile-sp](http://www.samsung.com/us/support/legal/mobile-sp)

### FCC ID and model number

This device has FCC ID: A3LSMR640L (Left ear) and A3LSMR640R (Right ear) and Model number: SM-R640

### Specific Absorption Rate (SAR) certification information

For information visit:

- [www.fcc.gov/general/radio-frequency-safety-0](http://www.fcc.gov/general/radio-frequency-safety-0)
- [www.fcc.gov/encyclopedia/specific-absorption-rate-sar-cellular-telephones](http://www.fcc.gov/encyclopedia/specific-absorption-rate-sar-cellular-telephones)
- [www.samsung.com/sar](http://www.samsung.com/sar)

### Safe Handling & Recycling of Batteries and Electronics

**WARNING!** Never dispose of batteries in a fire because they may explode. Do not disassemble, crush, puncture, heat, burn or reuse batteries. For more information, visit [call2recycle.org](http://call2recycle.org) or call 1-800-822-8837.

Dispose of unwanted electronics through an approved recycler: To find the nearest recycling location, go to our website [www.samsung.com/recycling](http://www.samsung.com/recycling) or call 1-800-SAMSUNG (726-7864).

### FCC Part 15 Information and Notices

This device complies with part 15 of the FCC Rules. Operation is subject to conditions: (1) This device may not cause harmful interference, and (2) this device must accept any interference received, including interference that may cause undesired operation. Operate devices that support wireless power sharing at least 8 inches/20 cm away from your body.

### FCC Radiation Exposure Statement

This equipment complies with FCC Radiation exposure limits set forth for an uncontrolled environment. This device and its antenna must not be co-located or operating in conjunction with any other antenna or transmitter.

**WARNING!** Your Samsung device contains magnets. Keep it away from credit cards and devices that may be affected by magnets. Keep your Samsung device more than 6 in./15cm away from medical devices. If you suspect interference with a medical device, stop using your Samsung device and consult your medical provider.

**WARNING!** Some users may experience skin irritation when using Galaxy Buds. This can be a result of extended use, forcefully inserting the earbuds, or allergies. If you experience itchiness, redness, swelling or other irritation, stop using your Galaxy Buds and consult a medical provider.

## WARNING

- **INGESTION HAZARD:** This product contains a button cell or coin battery.
- **DEATH** or serious injury can occur if ingested.
- A swallowed button cell or coin battery can cause **Internal Chemical Burns** in as little as **2 hours**.
- **KEEP** new and used batteries **OUT OF REACH** of CHILDREN.
- **Seek immediate medical attention** if a battery is suspected to be swallowed or inserted inside any part of the body.



This device contains a non-replaceable battery.

- Remove and immediately recycle or dispose of used batteries according to local regulations and keep away from children. Do NOT dispose of batteries in household trash or incinerate.
- Even used batteries may cause severe injury or death.
- Call a local poison control center for treatment information.
- Only use 1150 Coin type batteries for this product.
- The battery is 3.85 V.
- Non-rechargeable batteries are not to be recharged.
- Do not force discharge, recharge, disassemble, heat above 60 °C, or incinerate the product. Doing so may result in injury due to venting, leakage or explosion resulting in chemical burns.

### Samsung Electronics America, Inc.

700 Sylvan Avenue

Englewood Cliffs, NJ 07632

Phone: 1-800-SAMSUNG (726-7864)

Internet: [www.samsung.com](http://www.samsung.com)

© 2026 Samsung Electronics America, Inc. Samsung & Samsung Galaxy are registered trademarks of Samsung Electronics Co., Ltd. Other company and product names mentioned herein may be trademarks of their respective owners. Screen images simulated. Appearance of device may vary. Images shown are for reference only.