



OWNER'S MANUAL

LG Cloud Device Thin Client

Please read this manual carefully before operating your set and retain it for future reference.

CQ600W

CQ600N

CQ600I

CQ601W

CQ601N

CQ601I

www.lg.com

Copyright © 2022 LG Electronics Inc. All Rights Reserved.

SAFETY INSTRUCTIONS

- Please make sure the device is installed near the wall outlet to which it is connected and that the outlet is easily accessible.
- As long as this unit is connected to the AC wall outlet, it is not disconnected from the AC power source even if the unit is turned off.
- Be sure to use power cords and AC adapters provided or approved by LG Electronics, Inc.
- Do not use this equipment near water such as near a bathtub, washbowl, kitchen sink, laundry tub, in a wet basement, or near a swimming pool.
- Equipment is provided with ventilation openings in the cabinet to allow the release of heat generated during operation. If these openings are blocked, built-up heat can cause failures which may result in a fire hazard. Therefore, NEVER:
 - Block the bottom ventilation slots by placing the Equipment on a bed, sofa, rug, etc.
 - Place the equipment in a built-in enclosure unless proper ventilation is provided.
 - Cover the openings with cloth or other material.
 - Place the equipment near or over a radiator or heat source.
- There is a risk of explosion if a battery is replaced with incorrect type.
- This device is not intended for use in the direct field of view at visual display workplaces.
- To avoid incommoding reflections at visual display workplaces this device must not be placed in the direct field of view.

OPEN SOURCE SOFTWARE NOTICE INFORMATION

(Only CQ600W, CQ601W, CQ600I, CQ601I)



To obtain the source code that is contained in this product, under GPL, LGPL, MPL, and other open source licenses that have the obligation to disclose source code, and to access all referred license terms, copyright notices and other relevant documents, please visit <https://opensource.lge.com>.

LG Electronics will also provide open source code to you on CD-ROM for a charge covering the cost of performing such distribution (such as the cost of media, shipping, and handling) upon email request to opensource@lge.com.

This offer is valid to anyone in receipt of this information for a period of three years after our last shipment of this product.

LICENSE

Each model has different licenses. Visit www.lg.com for more information on the license.

	<p>The SuperSpeed USB Trident logo is a registered trademark of USB Implementers Forum, Inc.</p>
 <p>(Wi-Fi/Bluetooth supported models only.)</p>	<p>The Bluetooth® word mark and logos are registered trademarks owned by Bluetooth SIG, Inc. and any use of such marks by LG Electronics Inc. is under license. Other trademarks and trade names are those of their respective owners.</p>

* USB Type-C™ and USB-C™ are trademarks of USB Implementers Forum.

ASSEMBLING AND PREPARING

BIOS

CAUTION

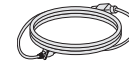
- BIOS Password: Without the registered password, access to the system will be denied. Write down and keep the password in a safe place.
- SSD Password: If you forgot SSD Password, you cannot restore the SSD.
- The replacement of SSD due to a forgotten SSD Password is not covered by warranty.

Product Composition

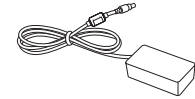
Please check whether all the components are included in the box before using the product. If there are any missing components, contact the retailer where you purchased the product.



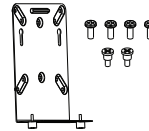
Owner's Manual/Regulatory
Manual/Cards



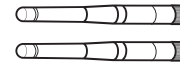
Power cord



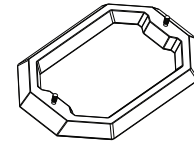
Adapter



Bracket / Screws
(4 ea, M4 x L10)
(2 ea, M3 x L7)



Wifi Antenna
(Wi-Fi/Bluetooth supported
models only.)



Stand Base

CAUTION

- Only use an approved LG power adapter.
- Damage caused by other power adapters is not covered by warranty.

NOTE

- Note that the components may look different from those shown here.
- Without prior notice, all information and specifications in this manual are subject to change to improve the performance of the product.

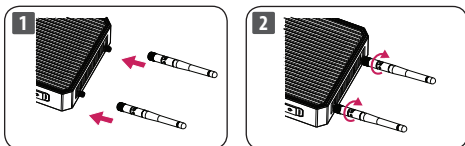
Product Installation

⚠ CAUTION

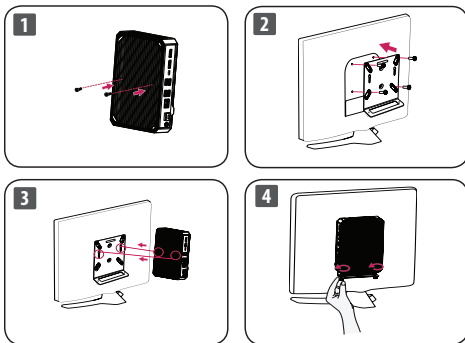
- Illustrations in this document represent typical procedures, so they may look different from the actual product.
- Applying excessive force when tightening screws may cause damage to the Cloud Device. Damage caused in this way will not be covered by the product warranty.
- The product may not be mounted on some monitors with mount bracket.
 - In this case, use the product in horizontal or vertical position.
- When connecting the peripherals after mounting the product on the monitor, be sure to hold the product.

1. Assembling the Wifi Antenna

(Wi-Fi/Bluetooth supported models only.)



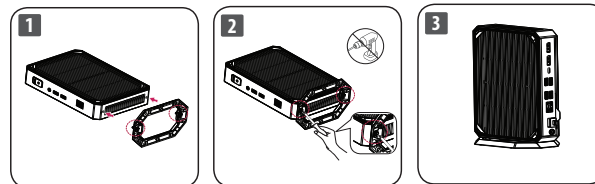
2-1. Mounting on the Back of the Monitor



⚠ CAUTION

- When installing the system on the back of the monitor, please keep stability in mind.

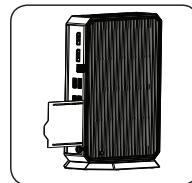
2-2. Assembling the Stand base



⚠ CAUTION

- When the product is used upright, it must be secure to the stand.

Check the ID Label Slot



! NOTE

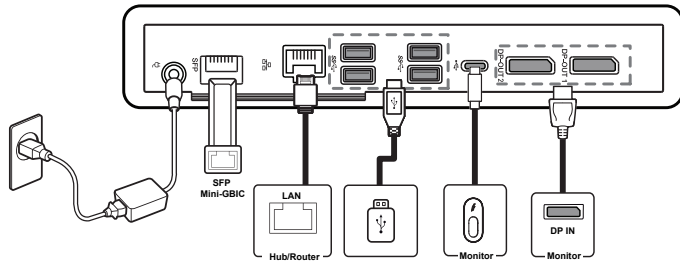
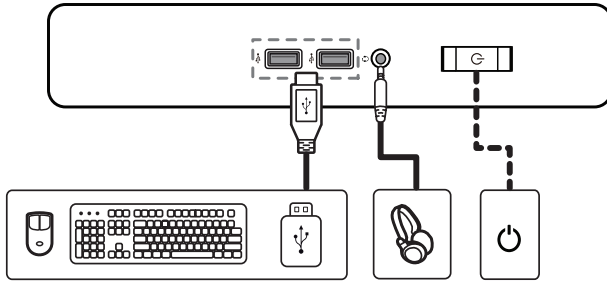
- Standard certification can be found by pulling the ID Label Slot.

Using the Kensington Lock

For more information on installation and usage, refer to the Kensington lock owner's manual or visit the website at <http://www.kensington.com>.

Parts and Buttons

Connection



! NOTE

- Some games (online, 3D, 2D) may not be supported, and some high-resolution videos (including Full HD and some HD videos) may stutter during playback.
- SFP Module (SFP supported models only.)
 - Only supports 1 Gbps module. (155 Mbps, 10 Gbps (SFP+) are not supported)
 - When you choose the SFP module, refer to the compatibility list by SFP vendor.
 - Use the same SFP module to connect both devices.
 - Devices are sold separately.
- Headphone Port (4-pole ear microphone port)
 - The 4-pole ear microphone port supports US 4-pole standards, but not the European 4-pole ear microphone.
 - When using ear microphone (or Bluetooth® headset), audio input and output are directed to the connected device.
 - The 4-pole ear microphone port does not support external microphone.
- If further assistance is needed when purchasing the power source, please contact the brand owner or agency for further information.

PRODUCT SPECIFICATION

Specifications are subject to change without notice.

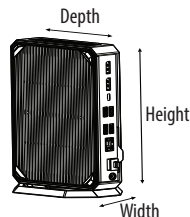
The symbol ~ means alternating current, and the symbol — means direct current.

AC/DC Adapter	Manufacturer: APD Model: DA-65G19 Input: 100-240 V~ 50-60 Hz 1.6 A Output: 19 V — 3.42 A
	Manufacturer: SHENZHEN HONOR ELECTRONIC CO.,LTD. Model: ADS-65AI-19-3 19065E Input: 100-240 V~ 50/60 Hz 1.5 A Output: 19 V — 3.42 A
Power rating	19 V — 3.42 A
Power Consumption (Typical)	On Mode: 25 W (Outgoing condition)* Sleep Mode: ≤ 1.1 W * Off Mode: ≤ 0.9 W *
USB Power	USB 2.0: 5 V, 0.5 A USB 3.2 Gen1: 5 V, 0.9 A

* The On Mode of Power Consumption is measured with LGE test standard. (Full White pattern, Maximum resolution)

* The Power Consumption level can be different by operating condition and monitor setting.

Environmental Conditions	Operating Conditions	Temperature	10 °C to 35 °C
		Humidity	0 % ~ 80 %
	Storing Conditions	Temperature	-20 °C to 60 °C
		Humidity	0 % ~ 85 %
Dimensions (Width x Height x Depth)	With Stand	85 x 208.1 x 144.9 (mm)	
	Without Stand	38 x 199.1 x 144.9 (mm)	
Weight (Without packaging)	With Stand	0.93 kg	
	Without Stand	0.91 kg	



Wireless module (AX201NGW) Specifications

(Wi-Fi/Bluetooth supported models only.)

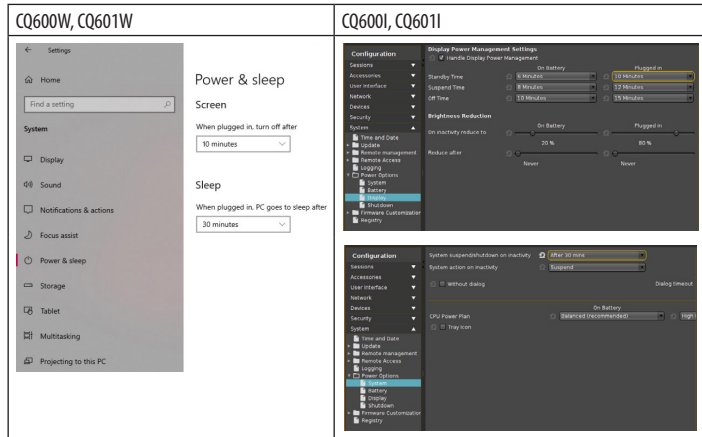
Wireless LAN (IEEE 802.11a/b/g/n/ac/ax)	
Frequency Range	Output Power (Max.)
2400 to 2483.5 MHz	20.0 dBm
5150 to 5350 MHz	22 dBm
5470 to 5725 MHz	22 dBm
5725 to 5850 MHz	13 dBm
Bluetooth	
Frequency Range	Output Power (Max.)
2400 to 2483.5 MHz	14 dBm

- As band channels can vary per country, the user cannot change or adjust the operating frequency. This product is configured for the regional frequency table.
- For consideration of the user, this device should be installed and operated with a minimum distance of 20 cm between the device and the body.

Power Management Options

(Only CQ600W, CQ601W, CQ600I, CQ601I)

The power management options for this PC are set as follows:



NOTE

- The settings of the power management options may change according to Windows updates.
- Turn off the display: Turn off the screen when the PC is not used for a set period of time.
- Put the computer to sleep: Switch to Sleep mode when the PC is not used for a set period of time.

ENERGY STAR®

(Only CQ600W, CQ601W, CQ600I, CQ601I)



- As a participating company of ENERGY STAR®, LGE has determined that this product meets the ENERGY STAR® guidelines for energy efficiency.
- The ENERGY STAR® program is designed to encourage electronic product manufacturers to develop energy-efficient products.
- Reducing the energy consumption of products helps reduce costs and conserve resources.
- This PC includes the following power management features:
 - Display Off: When the PC has not been used for up to 10 minutes.
 - Switch to Sleep mode: When the PC has not been used for up to 30 minutes.
- To exit Sleep mode, simply click the mouse or press any key on the keyboard. (CQ600W, CQ601W)
- To exit Sleep mode, simply press the power button. (CQ600I, CQ601I)



The model and serial numbers are located on the product. Record them below in case you ever need service.

Model

Serial No.

WARNING: This equipment is compliant with Class A of CISPR 32. In a residential environment this equipment may cause radio interference.