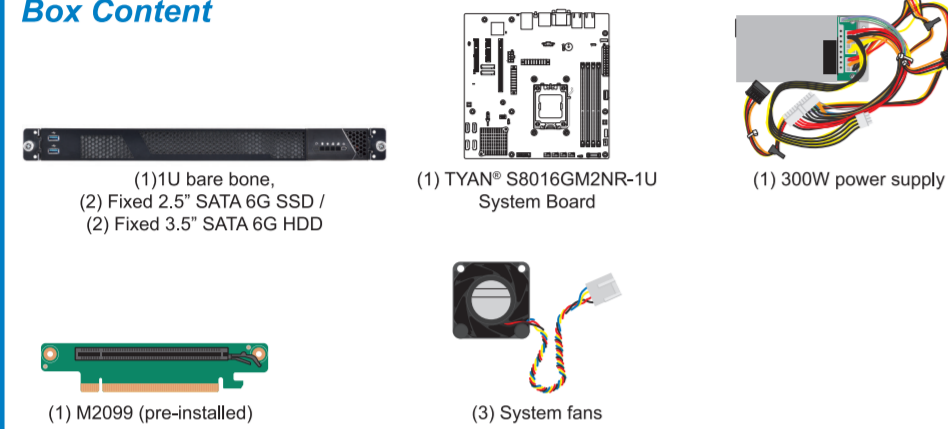


1 General Information

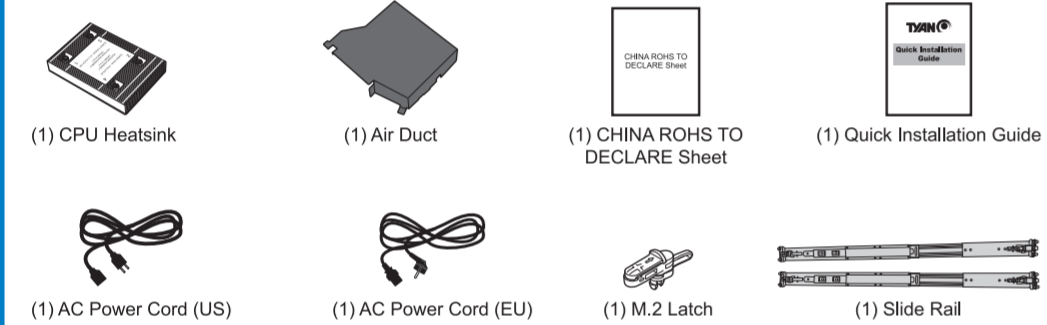
Read Me First

- The Barebone User's Manual is available for download from our Web site at <http://www.tyan.com>. Make sure to read all precautions and instructions before you start installing the server system.
- Refer all servicing to qualified personnel to avoid the risk of damage to the server system.
- Exercise normal ESD (Electrostatic Discharge) procedures during system integration. TYAN/MITAC recommends wearing gloves and an anti-static wrist strap to avoid possible damage to the equipment.
- Current processor socket design places the pins on the motherboard instead of the processor itself. Exercise caution when installing the processors as the manufacturer's warranty does not cover damage inflicted upon the motherboard, including damage to the CPU sockets.

Box Content



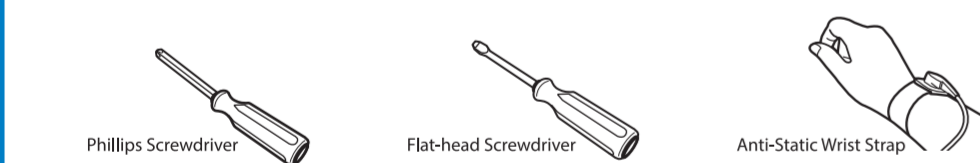
Accessories



Required Hardware Components

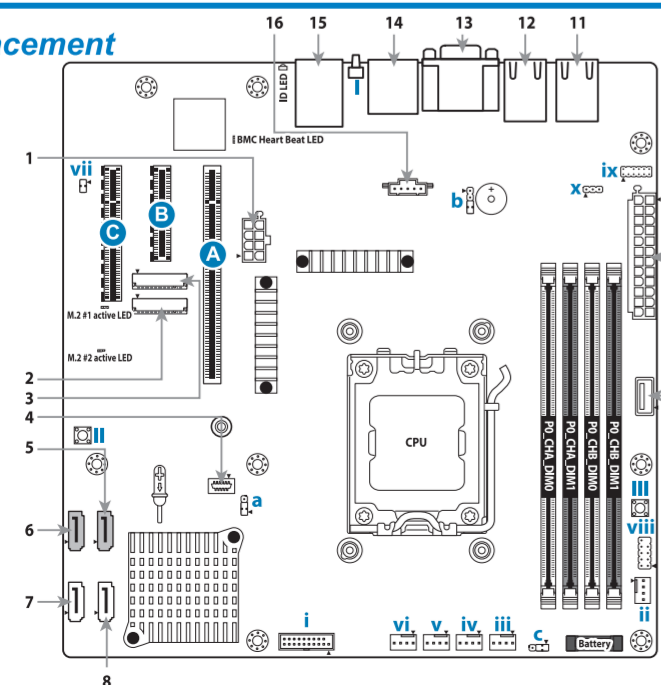
- Minimum Hardware Requirements**
- To avoid integration difficulties and possible board damage, your system must meet the following minimum requirements:
- Processor: (1) AMD EPYC 4004 Processor / AMD Ryzen 7000 processor w/ TDP up to 105W
 - Memory Type: (4) DIMM slots support
 - DDR5 ECC (1.1V) UDIMM & non-ECC 4800MHz:
 - Up to 128GB UDIMM
 - (2) memory channels per CPU
 - Hard Disk Drives: (2) Fixed 2.5" SATA 6G SSD / (2) Fixed 3.5" SATA 6G HDD
 - Rack Mount Kit (Industry 19" 6U rack-mountable)
- NOTE:** The updated hardware requirements of the system please refer to the barebones user's manual on our website at www.tyan.com

Tools Required



2 Motherboard Placement

Motherboard Placement



CONNECTORS

- | | |
|--|--|
| 1 8-pin, CPU and CPU MEM Power Connector (12V input) (J_PW2) | 9 TYPE A USB3 Connector (J_USBINT) |
| 2 M.2 Connector (J_M2CN2) | 10 24-pin ATX Power Connector (J_PW1) |
| 3 M.2 Connector (J_M2CN1) | 11 RJ45 (J_F6) |
| 4 TPM Connector (J_TPM1) | 12 RJ45 (J_F7) |
| 5 SATA Connector (J_SATA4) | 13 VGA connector (J_F3)/ DP connector (J_F2) |
| 6 SATA Connector (J_SATA3) | 14 DP connector (J_F4)/ USB 3.2 ports (J_FS) |
| 7 SATA DOM Connector (J_SATA2) | 15 USB3.2 ports + RJ45 (J_F1) |
| 8 SATA DOM Connector (J_SATA1) | 16 PSMI Connector (J_PSMI) |

SLOTS

- | |
|-----------------------------|
| A PCIe 3 x16 slot (J_PCIE6) |
| B PCIe 2 x4 slot (J_PCIE5) |
| C PCIe 1 x8 slot (J_PCIE4) |

BUTTONS

- | |
|-----------------------------|
| I ID button (SW_ID) |
| II Power button (SW_PWR) |
| III Reset button (SW_C_RST) |

JUMPERS

- | |
|---|
| a BIOS USB Update Jumper (J_USB_UPDATE) |
| b Buzzer Switch Jumper (J_BUZ1) |
| c Clear CMOS Jumper (J_CMOS_CLR) |

HEADERS

- | |
|---|
| i USB3 Front Panel Header (blue) (J_USB1) |
| ii CPU FAN Header (J_CPUFAN1) |
| iii FAN Header (J_SYSFAN1) |
| iv FAN Header (J_SYSFAN2) |
| v FAN Header (J_SYSFAN3) |
| vi FAN Header (J_SYSFAN4) |
| vii Chassis Intrusion Header (J_CHAS) |
| viii Front Panel Header (J_HDFP1) |
| ix Front Audio Header (J_HDAUD1) |
| x SPDIF Header (J1) |

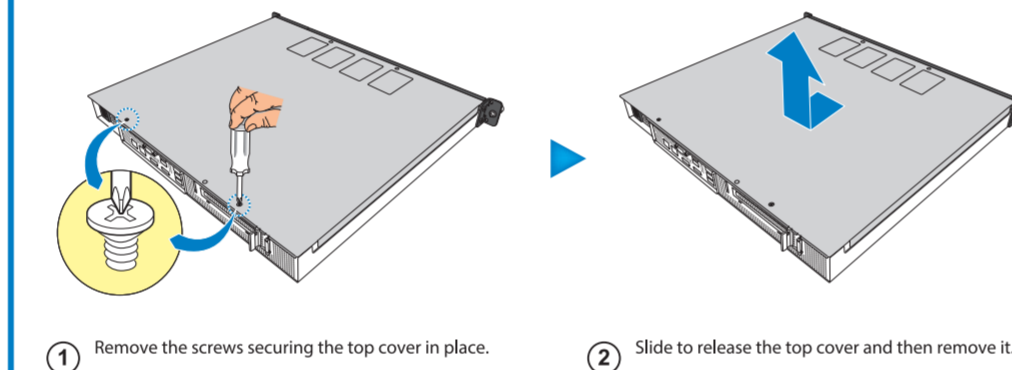
3 System Installation



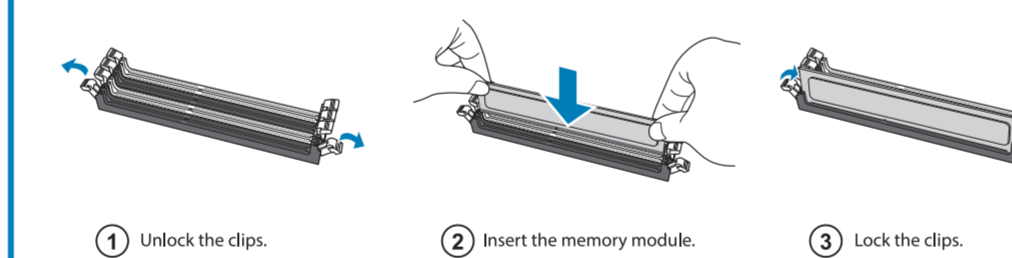
Preparing the Chassis

Read normal ESD (Electrostatic Discharge) procedures. Place your TYAN® Server Chassis on a flat anti-static surface to perform the following integration procedures. Read ESD procedures before reaching inside to install components.

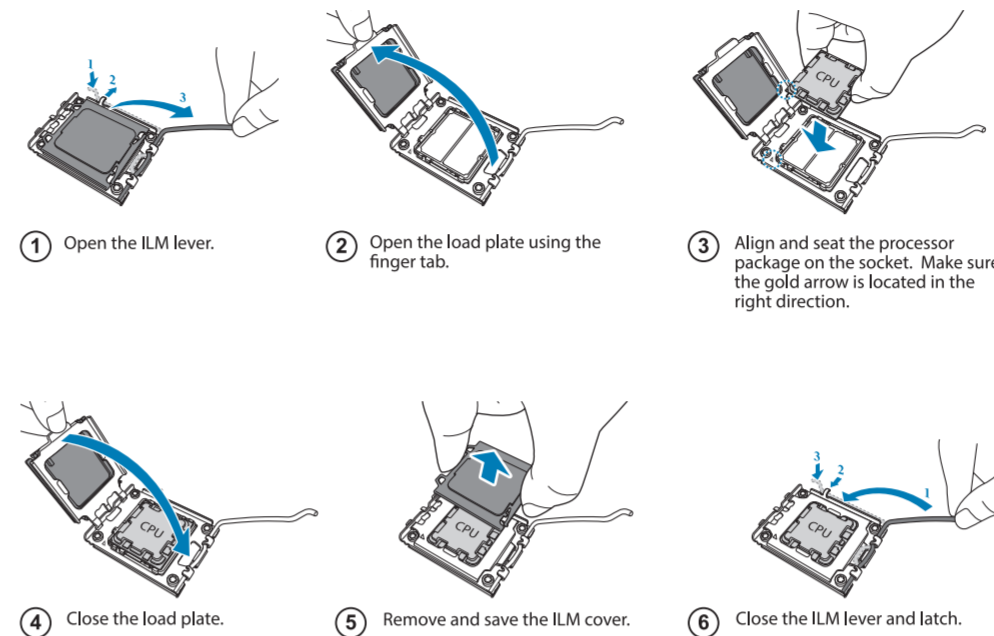
Remove the Top Cover



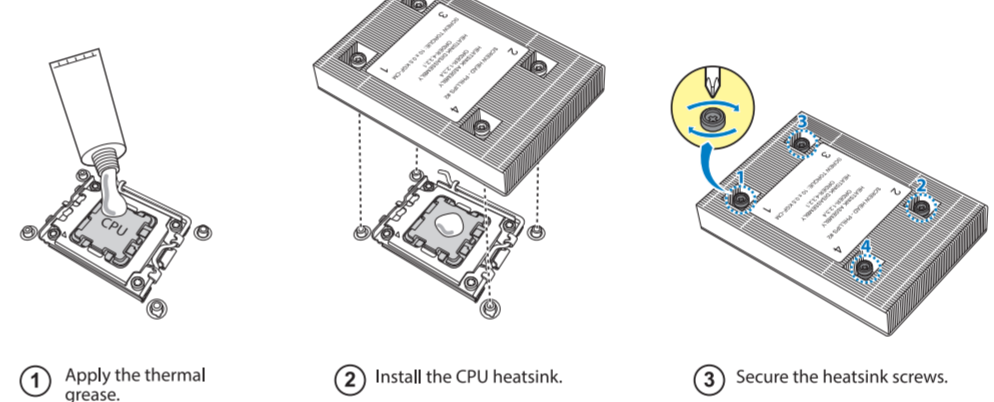
Install the Memory



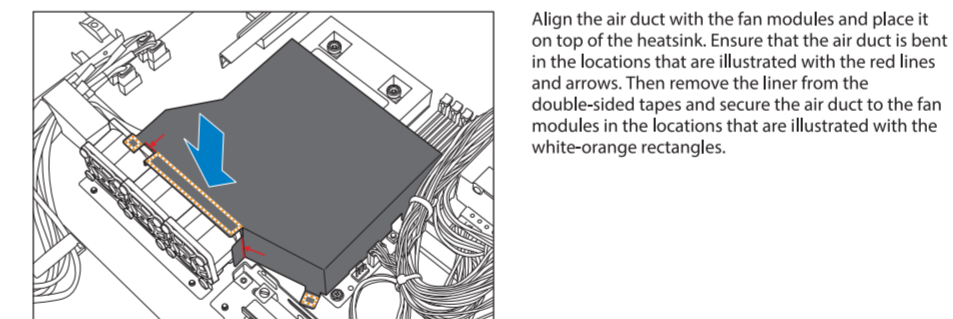
Install the Processor



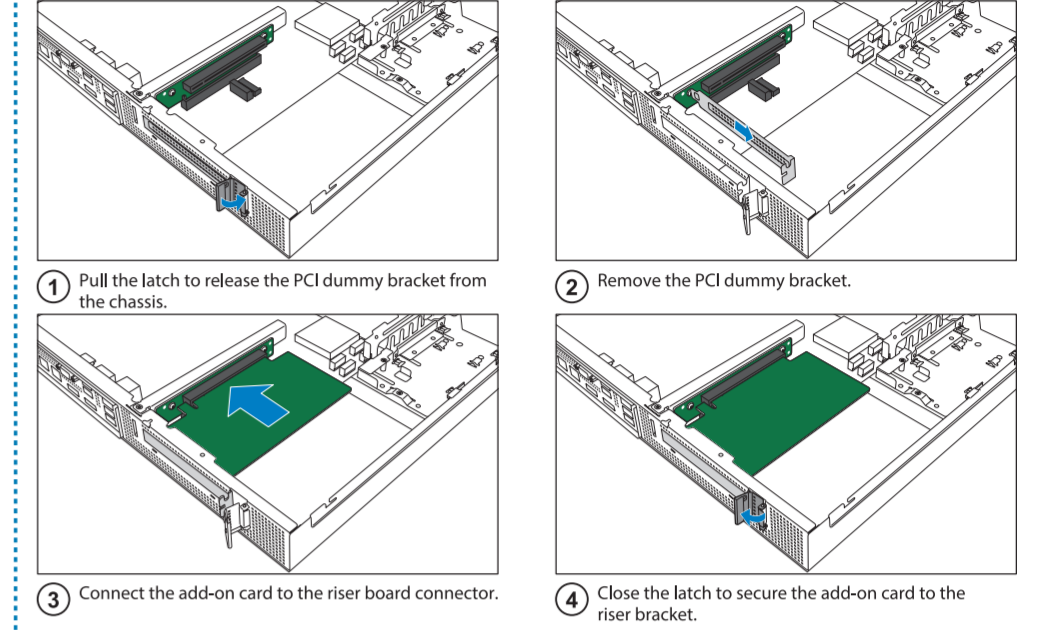
Install the CPU Heatsink



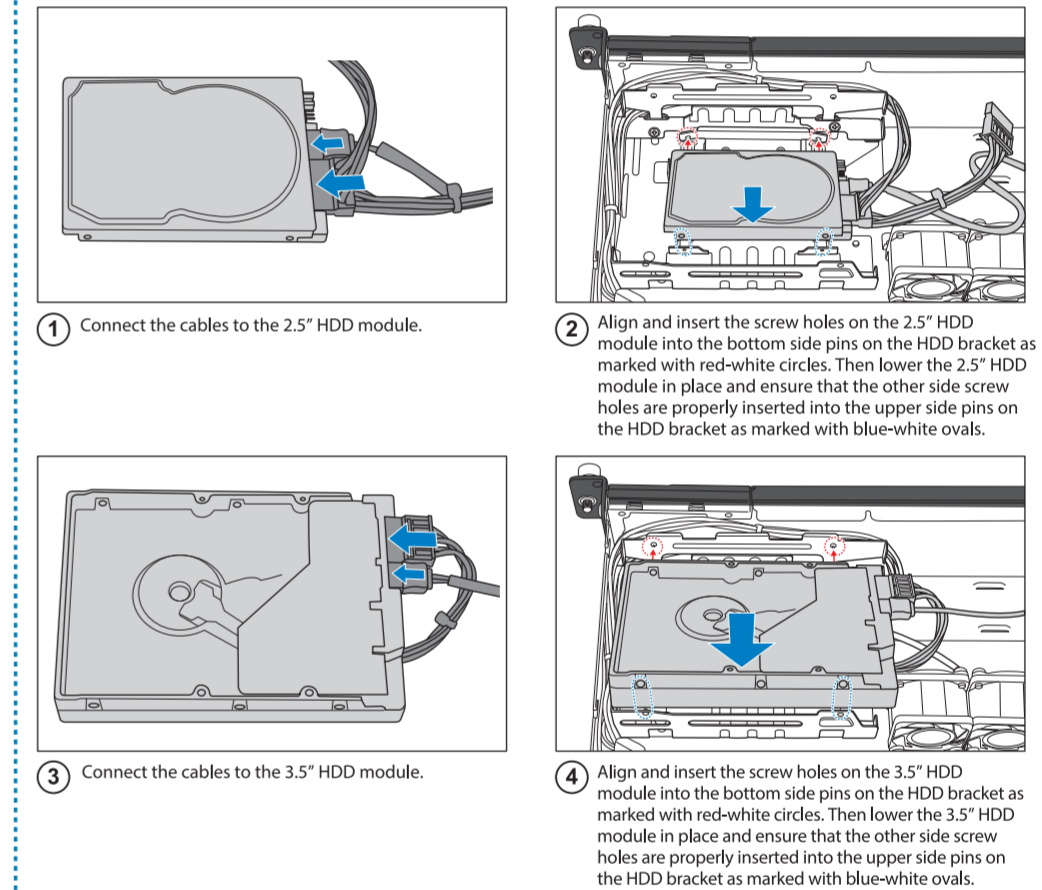
Install the Air Duct



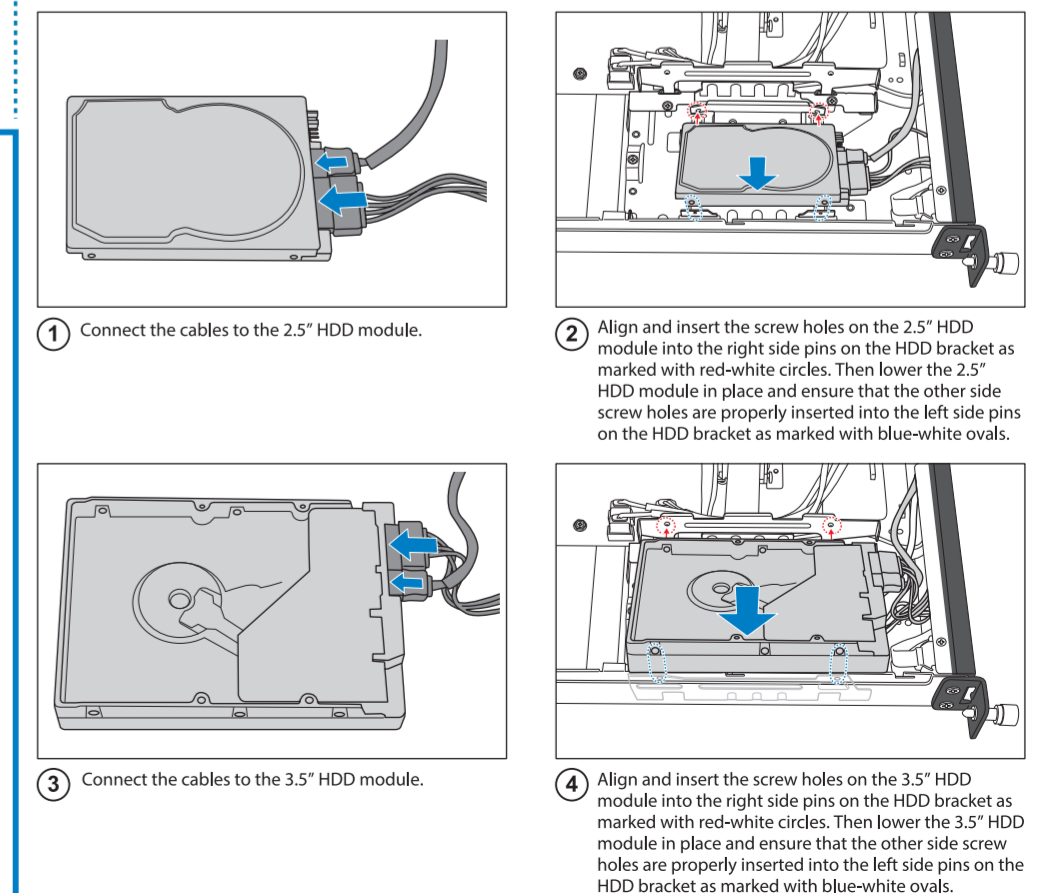
Installing the Add-On Card (Optional)



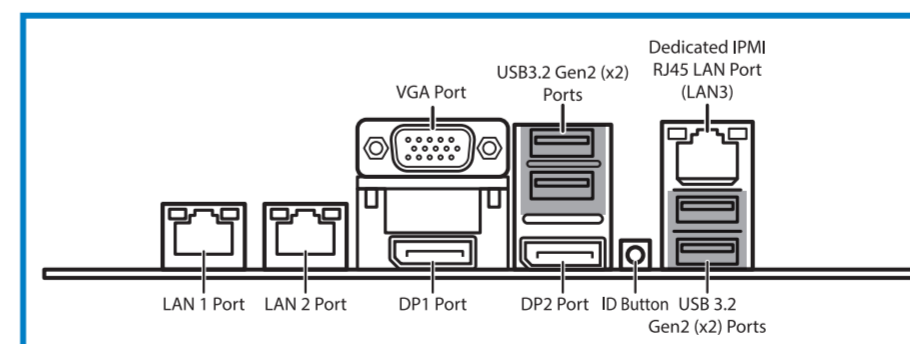
Installing the 2.5"/3.5" HDD (Right Side)



Installing the 2.5"/3.5" HDD (Left Side)



4 Locate the External I/O Ports



5 Caution

External Cap for DOA/RMA

NOTE: Please save and replace the external cap when returning the server board for service.

