

# SAMSUNG

## LED TV

### user manual

SERIES 3 TD315

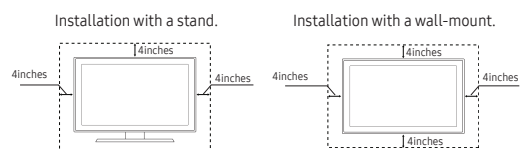
Figures and illustrations in this User Manual are provided for reference only and may differ from actual product appearance. Product design and specifications may be changed without notice.

#### Still image warning

- Avoid displaying still images (such as jpeg picture files) or still image elements (such as TV channel logos, panorama or 4:3 image format, stock or news bars at screen bottom etc.) on the screen. Constant displaying of still pictures can cause screening of LED screen, which will affect image quality. To reduce risk of this effect, please follow below recommendations:
- Avoid displaying the same TV channel for long periods.
  - Always try to display any image on full screen, use TV set picture format menu for best possible match.
  - Reduce brightness and contrast values to minimum required to achieve desired picture quality, exceeded values may speed up the burnout process.
  - Frequently use all TV features designed to reduce image retention and screen burnout, refer to proper user manual section for details.

#### Securing the Installation Space

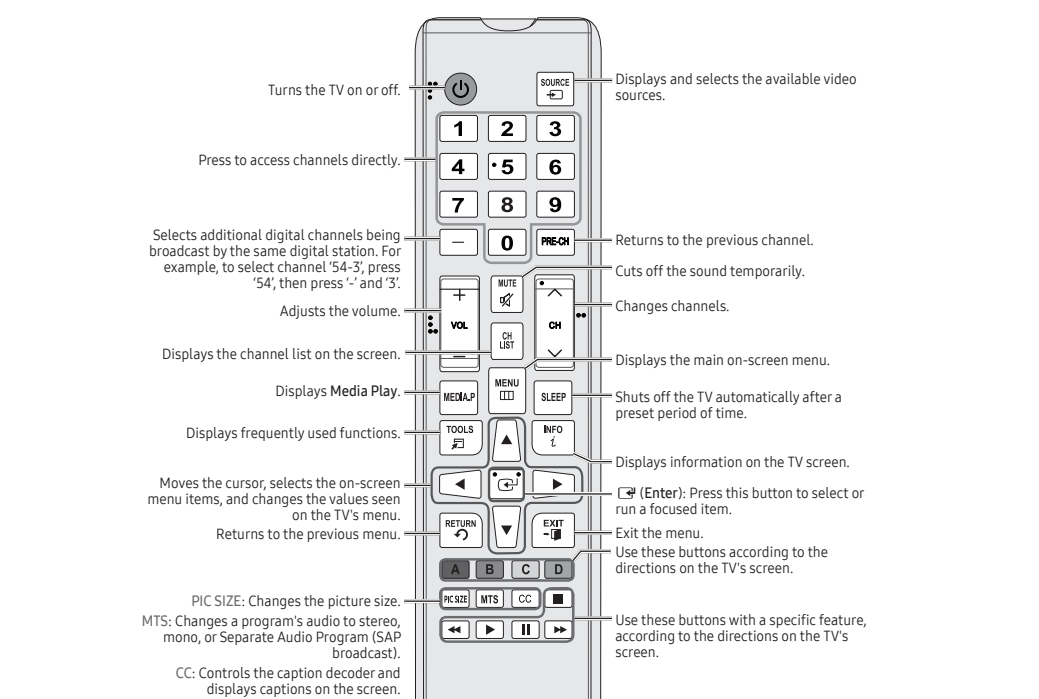
- Keep the required distances between the product and other objects (e.g. walls) to ensure proper ventilation.
- When using a stand or wall-mount, use parts provided by Samsung Electronics only.
  - If you use parts provided by another manufacturer, it may result in a problem with the product or an injury due to the product falling.
  - The appearance may differ depending on the product.
  - Be careful when you contact the TV because some parts can be somewhat hot.



(Solo México)  
 IMPORTADO POR: SAMSUNG ELECTRONICS MEXICO S.A. DE CV.  
 GENERAL MARIANO ESCOBEDO 476 PISO 8  
 COL. ANZURES, DELEGACIÓN MIGUEL HIDALGO, México, Ciudad de México C.P. 11590  
 TEL.: 01 55 53747-5100 / 01 800 726 7864

#### Remote Control

Learn where the function buttons are on your remote. Especially note POWER, SOURCE, VOL., CH, MENU, TOOLS, CH LIST, RETURN and EXIT.

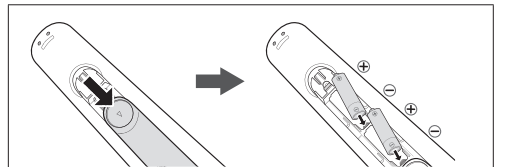


The button names above may differ from the actual names. Some buttons on the remote control may not be available. This remote control has Braille points on the Power, Channel, Volume, and Enter buttons and can be used by visually impaired persons.

#### Display Modes (HDMI/DVI Input)

Mode	Resolution	Horizontal Frequency (kHz)	Vertical Frequency (Hz)	Pixel Clock Frequency (MHz)	Sync Polarity (H/V)
IBM	720 x 400	31.469	70.087	28.322	-/+
	640 x 480	35.000	66.667	30.240	-/-
	640 x 480	35.000	75.000	31.500	-/-
MAC	832 x 624	49.726	74.551	51.284	-/+
	640 x 480	31.469	59.940	25.175	-/-
	640 x 480	37.861	72.809	31.500	-/-
VESA DMT	640 x 480	37.500	75.000	31.500	-/-
	800 x 600	37.879	60.317	40.000	+/+
	800 x 600	48.077	72.188	50.000	+/+
VESA DMT	800 x 600	46.875	75.000	49.500	+/+
	1024 x 768	48.363	60.004	65.000	-/-
	1024 x 768	56.476	70.069	75.000	-/-
	1024 x 768	60.023	75.029	78.750	+/+
	1280 x 720	45.000	60.000	74.250	+/+
1366 x 768	47.712	59.790	85.500	+/+	

#### Installing batteries (Battery size: AAA)



**NOTE**

- Use the remote control within 23 feet from TV.
- Bright light may affect the performance of the remote control. Avoid use when nearby fluorescent lights or neon signs.
- The Color and shape may vary depending on the model.

#### Important Safety Instructions

### SAMSUNG

Warning! Important Safety Instructions  
 (Please read the Safety Instructions before using your TV.)

**CAUTION**

**RISK OF ELECTRIC SHOCK. DO NOT OPEN.**

CAUTION: TO REDUCE THE RISK OF ELECTRIC SHOCK, DO NOT REMOVE COVER (OR BACK). THERE ARE NO USER SERVICEABLE PARTS INSIDE. REFER ALL SERVICING TO QUALIFIED PERSONNEL.

This symbol indicates that high voltage is present inside. It is dangerous to make any kind of contact with any internal part of this product.

This symbol indicates that this product has included important literature concerning operation and maintenance.

Caution. Consult instructions for use: This symbol instructs the user to consult the user manual for further safety related information.

- Do not place this apparatus in a confined space, such as a bookcase or built-in cabinet, unless proper ventilation is provided.
- Do not place this apparatus near or over a radiator or heat register; or where it is exposed to direct sunlight.
- Do not place vessels (vases etc.) containing water on this apparatus, as this can result in a fire or electric shock.
- Do not expose this apparatus to rain or place it near water (near a bathtub, washbasin, kitchen sink, or laundry tub, in a wet basement, or near a swimming pool, etc.). If this apparatus accidentally gets wet, unplug it and contact an authorized dealer immediately.
- This apparatus uses batteries. In your community, there might be environmental regulations that require you to dispose of these batteries properly. Please contact your local authorities for disposal or recycling information.
- Do not overload wall outlets, extension cords, or adaptors beyond their capacity, since this can result in fire or electric shock.
- Power-supply cords should be placed so that they are not likely to be walked on or pinched by items placed upon or against them. Pay particular attention to cords at the plug end, at wall outlets, and at the point where they exit from the appliance.
- To protect this apparatus from a lightning storm, or when left unattended and unused for long periods of time, unplug it from the wall outlet and disconnect the antenna or cable system. This will prevent damage to the set due to lightning and power line surges.
- Before connecting the AC power cord to the DC adaptor outlet, make sure that the voltage designation of the DC adaptor corresponds to the local electrical supply.
- Never insert anything metallic into the open parts of this apparatus. This may cause a danger of electric shock.
- To avoid electric shock, never touch the inside of this apparatus. Only a qualified technician should open this apparatus.
- Be sure to plug in the power cord until it is firmly seated. When unplugging the power cord from a wall outlet, always pull on the power cord's plug. Never unplug it by pulling on the power cord. Do not touch the power cord with wet hands.
- If this apparatus does not operate normally - in particular, if there are any unusual sounds or smells coming from it - unplug it immediately and contact an authorized dealer or service center.
- Be sure to pull the power plug out of the outlet if the TV is to remain unused or if you are to leave the house for an extended period of time (especially when children, elderly, or disabled people will be left alone in the house).
  - Accumulated dust can cause an electric shock, an electric leakage, or a fire by causing the power cord to generate sparks and heat or by causing the insulation to deteriorate.
- Be sure to contact an authorized Samsung service center for information if you intend to install your TV in a location with heavy dust, high or low temperatures, high humidity, chemical substances, or where it will operate 24 hours a day such as in an airport, a train station, etc. Failure to do so may lead to serious damage to your TV.
  - An improper ground may cause electric shock or equipment damage. (Class I Equipment only.)
- Use only a properly grounded plug and wall outlet.
- To turn off this apparatus completely, disconnect it from the wall outlet. To ensure you can unplug this apparatus quickly if necessary, make sure that the wall outlet and power plug are readily accessible.
- Store the accessories (batteries, etc.) in a location safely out of the reach of children.
- Do not drop or strike the product. If the product is damaged, disconnect the power cord and contact a Samsung service center.
- To clean this apparatus, unplug the power cord from the wall outlet and wipe the product with a soft, dry cloth. Do not use any chemicals such as wax, benzene, alcohol, thinners, insecticide, air fresheners, lubricants, or detergents. These chemicals can damage the appearance of the TV or erase the printing on the product.
- Do not expose this apparatus to dripping or splashing.
- Do not dispose of batteries in a fire.
- Do not short-circuit, disassemble, or overheat the batteries.
- There is danger of an explosion if you use the batteries used in the remote with the wrong type of battery. Replace only with the same or equivalent type.
- **WARNING - TO PREVENT THE SPREAD OF FIRE, KEEP CANDLES AND OTHER ITEMS WITH OPEN FLAMES AWAY FROM THIS PRODUCT AT ALL TIMES.**
- Use care when touching the TV after it has been on for some time. Some parts can be warm to the touch.
- **State of California Proposition 65 Warning**
  - **WARNING:** This product contains chemicals known to the State of California to cause cancer and birth defects or other reproductive harm.

#### Channel Menu

#### Seeing Channels

- Channel List**
- Add, delete or set Favorite channels and use the program guide for digital broadcasts. Select a channel in the **All Channels**, **Added Channels**, **Favorite** or **Programmed** screen by pressing the **▲/▼** buttons, and pressing the **ENTER** button. Then you can watch the selected channel.
- **All Channels:** Shows all currently available channels.
  - **Added Channels:** Shows all added channels.
  - **Favorite:** Shows all favorite channels.
  - **Programmed:** Shows all currently reserved programs.
- Using the remote control buttons with the **Channel List**
- **Green (Zoom):** Enlarges or shrinks a channel number.
  - **Yellow (Select):** Selects multiple channel lists. Select desired channels and press the Yellow button to set all the selected channels at the same time. The **✓** mark appears to the left of the selected channels.
  - **Tools:** Displays the **Channel List** option menu. (The Options menu may differ depending on the situation.)

- Channel Status Display icons**
- **✓**: A channel selected.
  - **▲**: A channel set as a Favorite.
  - **○**: A reserved program.
  - **■**: A program currently being broadcast.

#### Memorizing channels

**Antenna (Switch to Cable / Switch to Air)**

Before your television can begin memorizing the available channels, you must specify the type of signal source that is connected to the TV (i.e. an Air or a Cable system).

#### Auto Program

- When selecting the Cable TV system: Selects the cable system. STD, HRC and IRC identify various types of cable TV systems. Contact your local cable company to identify the type of cable system that exists in your particular area. At this point, the signal source has been selected.
- After all the available channels are stored, it starts to remove scrambled channels. The Auto Program menu then reappears.
- Press the **ENTER** button to stop the channel store during Auto Program.

#### How to Stop Auto Programming

1. Press the **ENTER** button.
2. A message will ask **Stop Auto Program?** Select Yes by pressing the **▲** or **▶** button.
3. Press the **ENTER** button.

#### Other Features

##### Clear Scrambled Channel

This function filters out scrambled channels after Auto Program is completed. This process may take up to 20-30 minutes.

- Press the **ENTER** button to stop the Clear Scrambled Channel. This function is only available in Cable mode.

##### Fine Tune

(analog channels only)

If the reception is clear, you do not have to fine tune the channel, as this is done automatically during the search and store operation. If the signal is weak or distorted, fine tune the channel manually.

- Fine tuned channels that have been saved are marked with an asterisk **\*\*** on the right-hand side of the channel number in the channel banner.
- To reset the fine-tuning, select **Reset**.

#### Getting Started

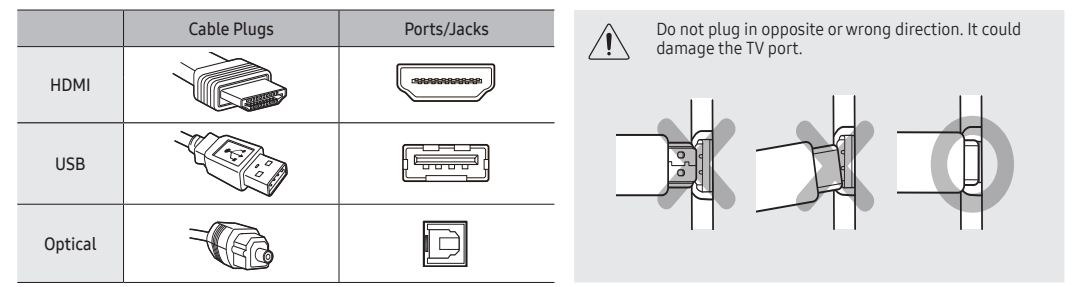
#### Accessories

- Remote Control & Batteries (AAA x 2)
- Power Cord
- Cable Holder
- Warranty Card / Regulatory Guide
- User manual

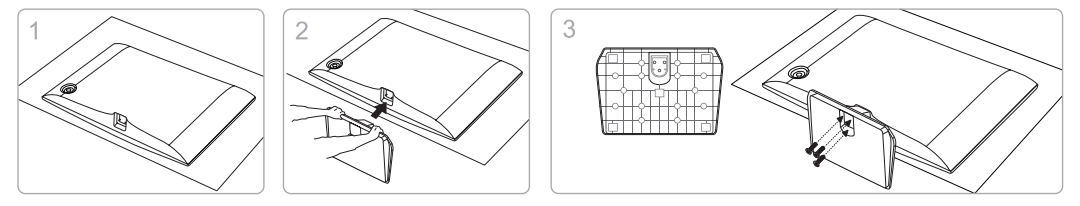
#### Input Cables (Sold Separately)

- Audio
- Component
- HDMI
- Composite (AV)
- Coaxial (RF)
- HDMI-DVI

Make sure you have the correct cable before plugging it in. Illustrations of common plugs and jacks are shown below.



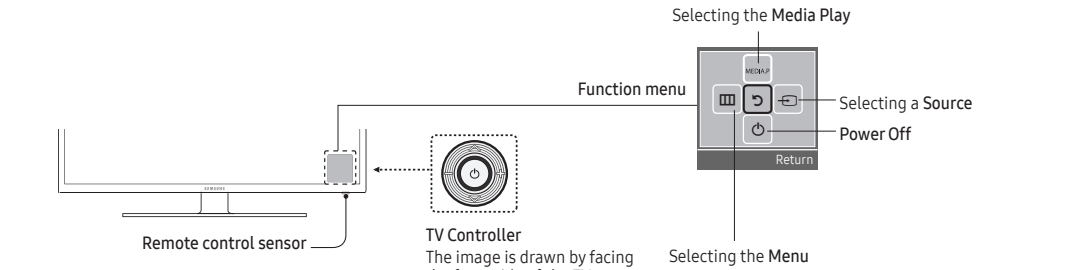
#### Installing the stand



Please align the location holes beside the screws on the stand and then go to step 2.

#### TV Controller (Panel Key)

The TV's Controller, a small joystick like button on the rear right side of the TV, lets you control the TV without the remote control.



- Exits the menu when pressing the controller more than 1 second.
- When selecting the function by moving the controller to the up/down/left/right directions, be sure not to press the controller. If you press it first, you cannot operate it to move the up/down/left/right directions.

#### Plug & Play (Initial Setup)

When you turn the TV on for the first time, a sequence of screens and on-screen prompts will assist you in configuring the TV's basic settings. Press the **POWER** button. **Plug & Play** is available only when the Input source is set to TV. Set the initial setup following instructions that the TV guides.

- Connecting the power cord and antenna. (refer to 'Connections')

#### Picture Menu

Select **TOOLS**

Choose your preferred picture type.

- When connecting a PC, you can only select **Entertain** and **Standard**.
- **Dynamic:** Suitable for a bright room.
- **Standard:** Suitable for a normal environment.
- **Movie:** Suitable for watching movies in a dark room.
- **Entertain:** Suitable for watching movies and games.
- Only available when connecting a PC.

- **Film Mode:** Sets the TV to automatically sense and process film signals from all sources and adjusts the picture for optimum quality. Available in ATV, DTV(interlace), AV, COMPONENT (480i / 1080i) and HDMI (480i / 1080i).
- **Motion Lighting (Off / On):** Reduce power consumption by brightness control adapted motion.
- Available in **Standard** mode only.

**Picture Off**

The TV screen is turned off but audio continues. Press any key(except Power and Volume buttons)on your remote to turn the screen back on.

**Picture Reset**

Resets your current picture mode to its default settings.

- **Reset Picture Mode:** Returns all picture values in the currently selected mode to the default settings.

#### Sound Menu

**Mode**

- **Standard:** Selects the normal sound mode.
- **Music:** Emphasizes music over voices.
- **Movie:** Provides the best sound for movies.
- **Clear Voice:** Emphasizes voices over other sounds.

**Equalizer**

(standard sound mode only)

- **Balance L/R:** Adjusts the balance between the right and left speaker.
- **100Hz / 300Hz / 1kHz / 3kHz / 10kHz (Bandwidth Adjustment):** Adjusts the level of specific bandwidth frequencies.
- **Reset:** Resets the equalizer to its default settings.

**Auto Volume**

Automatically adjusts the volume level when you change video sources or content so the level remains the same.

**Speaker Select**

A sound echo may occur due to a difference in decoding speed between the main speaker and the audio receiver. In this case, set the TV to **External Speaker**.

- When **Speaker Select** is set to **External Speaker**, the volume and MUTE buttons will not operate and the sound settings will be limited.
- When **Speaker Select** is set to **External Speaker**.
  - **TV Speaker:** Off, External Speaker: On
  - When **Speaker Select** is set to **TV Speaker**.
    - **TV Speaker:** On, External Speaker: On
    - **TV Speaker:** On, External Speaker: Off
  - If there is no video signal, both speakers will be mute.

**Preferred Language**

(digital channels only)

Digital TV broadcasts are capable of simultaneous transmission of many audio tracks (for example, simultaneous translations of the program into foreign languages).

- You can only select a language from among the ones being broadcasted.

**Digital Clean View:** If the broadcast signal received by your TV is weak, you can activate the **Digital Clean View** feature to reduce any static and ghosting that may appear on the screen.

- When the signal is weak, try other options until the best picture is displayed.

**HDMI Black Level:** Selects the black level on the screen to adjust the screen depth.

- Available only in HDMI mode (RGB signals).

**Screen Fit:** (DTV) Displays the full image without any cut-off when HDMI (720p / 1080i / 1080p) or Component (1080i / 1080p) signals are inputted.

- **Custom:** Magnifies or shrinks 16:9 pictures vertically and/or horizontally. A magnified or shrunk picture can be moved left, right, up, and down.
- **HD (High Definition):** 16:9 - 1080i/1080p (1920x1080), 720p (1280x720)
- Settings can be adjusted and stored for each external device you have connected to an input on the TV.
- **Picture Sizes** available by Input Source:

Input Source	Picture Size
ATV, AV, Component (480i, 480p)	16:9, Zoom, Zoom2, 4:3
DTV(1080i), Component (1080i, 1080p), HDMI (720p, 1080i, 1080p)	16:9, Wide Fit, 4:3, Screen Fit

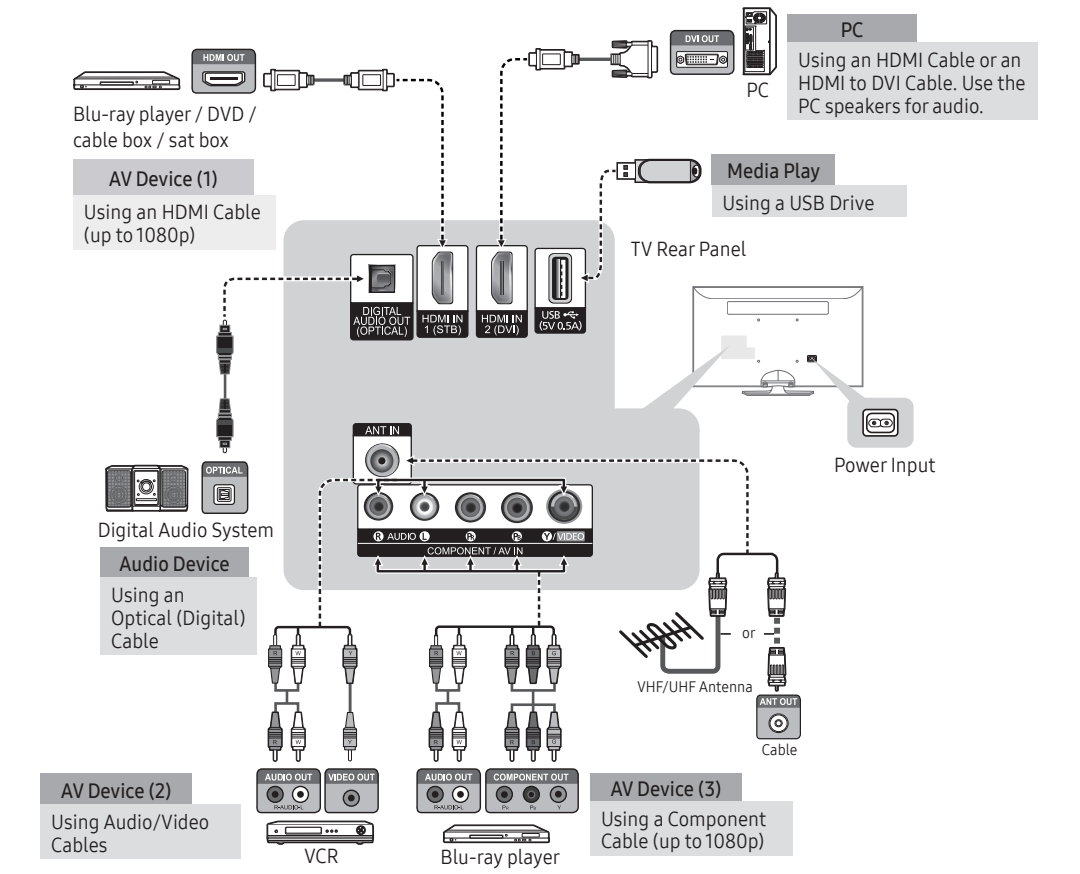
**Multi-Language (MTS)**

(analog channels only)

- **Mono:** Choose for channels that are broadcasting in mono or if you are having difficulty receiving a stereo signal.
- **Stereo:** Choose for channels that are broadcasting in stereo.
- **SAP:** Choose to listen to the Separate Audio Program, which is usually a foreign-language translation.
- Depending on the program being broadcast, you can listen to **Mono, Stereo** or **SAP**.

#### Connections

- For the best picture and audio quality, connect digital devices using an HDMI cable.
- If you connect an external device to the TV that uses an older version of HDMI, the video and audio may not work. If this occurs, ask the manufacturer of the device about the HDMI version and, if it is out of date, request an upgrade.
- Be sure to purchase a certified HDMI cable. Otherwise, the picture may not display or a connection error may occur.
- **PC/DVI AUDIO** IN input is not supported.
- For an HDMI to DVI cable connection, you must use the HDMI IN 2 (DVI) port.
- Connecting through the HDMI cable may not be supported depending on the PC.
- If an HDMI to DVI cable is connected to the HDMI IN 2 (DVI) port, the audio does not work.
- For Set-top box connection using HDMI cable, we highly recommend you to connect the HDMI IN 1 (STB) port.



#### Changing the Input Source

#### Source List

- Use to select TV or an external input source such as a DVD player / Blu-ray player / cable box / STB satellite receiver.
1. Press the **SOURCE** button.
  2. Select a desired external input source.
- **TV / AV / Component / HDMI / HDMI2/DVI**
    - You can only choose external devices that are connected to the TV. In the **Source List**, connected inputs will be highlighted.

#### How to use Edit Name

Edit Name lets you associate a device name to an input source. To access **Edit Name**, press the **TOOLS** button in **Source List**. Name the device connected to the input jacks to make your input source selection easier.

- When connecting a PC to the HDMI IN 2(DVI) port with HDMI cable, you should set the TV to PC mode under **Edit Name**.
- When connecting a PC to the HDMI IN 2(DVI) port with HDMI to DVI cable, you should set the TV to **DVI** PC mode under **Edit Name**.
- When connecting an AV devices to the HDMI IN 2(DVI) port with HDMI to DVI cable, you should set the TV to **DVI** mode under **Edit Name**.

#### Information

You can see detailed information about the connected external device.

#### SPDIF Output

The SPDIF (Sony Philips Digital InterFace) outputs an uncompressed digital audio signal when you connect the digital audio jack on the back of the TV to a digital audio in jack on a receiver or home theater.

- **Audio Format (PCM/Dolby Digital):** You can select the Digital Audio output (SPDIF) format. The available Digital Audio output format may differ depending on the input source.
  - By connecting the TV to a receiver or home theater with **Dolby Digital** and 5.1ch speakers and selecting **Dolby Digital**, you can maximize your interactive 3D sound experience.
- **Audio Delay:** Lets you correct timing mismatches between the audio track and the video when you are watching the TV and listening to digital audio output from the TV through an external device such as an AV receiver. When you select **Audio Delay**, a slider appears. Use the left and right arrow buttons to adjust the slider. Press **ENTER** when done (0ms ~ 250ms).

**Visual Impaired**

(digital channels only)

Adds verbal description to the main audio to help the visually impaired.

**Dolby Digital Compression**

Set Dolby Digital compression mode.

**HDMI Audio Format**

**HDMI Audio Format (PCM/Bistream):** Set the audio input signal format suitable for the external device connected to the TV's HDMI port.

**Sound Reset**

- **Reset All:** Resets all sound settings to the factory defaults.

#### Setup Menu

Let's you re-run the **Plug & Play** initial setup procedure.

#### Language

Set the menu language.

- Choose between **English, Español, and Français**.

#### Setting the Time

**Time**

- The current time will appear every time you press the **INFO** button.
- **Clock:** Setting the clock is for using various timer features of the TV.
  - If you disconnect the power cord, you have to set the clock again.
- **Clock Mode:** Set the current time manually or automatically.
- **Clock Set:** Set the Month, Day, Year, Hour, Minute and am/pm.
- Available only when **Clock Mode** is set to **Manual**.
- **Time Zone:** Select your time zone.
- **DST (Daylight Saving Time)** Switches the DST (Daylight Saving Time) function on or off.
- **DST and Time Zone** function is only available when the **Clock Mode** is set to **Auto**.
- **Sleep Timer:**
  - Automatically shuts off the TV after a preset period of time. (30, 60, 90, 120, 150 and 180 minutes).
  - To cancel the **Sleep Timer**, select **Off**.

#### Program Rating Lock

The **Program Rating Lock** feature automatically locks out programs that are deemed inappropriate for children. The user must enter a PIN (personal identification number) before any of the **Program Rating Lock** restrictions are set up or changed.

- **Program Rating Lock** is not available in **HDMI** or **Component** mode.
- The default PIN number of a new TV set is "0-0-0-0".
- **Program Rating Lock:** You can block rated TV Programs.
- **TV Parental Guidelines:** You can block TV programs depending on their rating. This function allows you to control what your children are watching.
- **MPPAA Rating:** You can block movies depending on their MPPAA rating. The Motion Picture Association of America (MPAA) has implemented a rating system that provides parents or guardians with advanced information on which films are appropriate for children.
- **Canadian English:** You can block TV programs depending on their Anglophone Canadian.
- **Canadian French:** You can block TV programs depending on their French Canadian rating.
- **Downloadable U.S. Rating:** Parental restriction information can be used while watching DTV channels.
- **Change PIN:** The Change PIN screen will appear. Choose any 4 digits for your PIN and enter it in **Enter New PIN**. Re-enter the same 4 digits to confirm **New PIN**. When the **Change PIN** screen disappears, press the **OK** button. The TV has memorized your new PIN.
- If you forget the PIN, press the remote-control buttons in the following sequence, which resets the pin to "0-0-0-0": **POWER (off)** → **MUTE** → **8** → **2** → **4** → **POWER (on)**

#### Game Mode

When connecting to a game console such as PlayStation™ or Xbox™, you can enjoy a more realistic gaming experience by selecting the **game menu**.

- Precautions and limitations for game mode
  - To disconnect the game console and connect another external device, set **Game Mode** to **Off** in the setup menu.
  - If you display the TV menu in **Game Mode**, the screen shakes slightly.
  - **Game Mode** is not available when the input source is set to **TV**.



## Caption

(On-Screen Text Messages)

■ **Caption**: You can switch the caption function on or off. If captions are not available, they will not be displayed on the screen.

🔗 The Caption feature does not work in **Component** or **HDMI mode**.

■ **Caption Mode**: You can select the desired caption mode.

- Default / CCI-CC4 / Text1-Text4**: (analog channels only) The Analog Caption function operates in either analog TV channel mode or when a signal is supplied from an external device to the TV. (Depending on the broadcasting signal, the Analog Caption function may or may not work with digital channels.)
- Default / Service1-Service6 / CCI-CC4 / Text1-Text4**: (digital channels only) The Digital Captions function works with digital channels.

🔗 **Service1-6** may not be available in digital caption mode depending on the broadcast.

■ **Digital Caption Options**: (Digital channels only)

**Size**: Options include Default, Small, Standard, Large, and Extra large. The default is Standard.

**Font Style**: Options include **Default** and **Styles 0 to 7**. The default is **Style 0**.

**Foreground Color**: Options include **Default**, **White**, **Black**, **Red**, **Green**, **Blue**, **Yellow**, **Magenta**, and **Cyan**. You can change the color of the letters. The default is **White**.

**Background Color**: Options include **Default**, **White**, **Black**, **Red**, **Green**, **Blue**, **Yellow**, **Magenta**, and **Cyan**. You can change the background color of the captions. The default is **Black**.

**Window Color**: Options include **Default**, **White**, **Black**, **Red**, **Green**, **Blue**, **Yellow**, **Magenta**, **Cyan**. Default is **Black**.

**Foreground Opacity**: This adjusts the opacity of text. Options include **Default**, **Transparent**, **Translucent**, **Solid**, and **Flashing**.

**Background Opacity**: This adjusts the opacity of the caption background. Options include **Default**, **Transparent**, **Translucent**, **Solid**, and **Flashing**.

**Window Opacity**: This refers caption to window background, not character background. Options include **Default**, **Transparent**, **Translucent**, **Solid**, **Flashing**. Default is **Transparent**.

**Edge Type**: Options include **No Edge**, **Raised**, **Depressed**, **Uniform**, **Drop Shadow**. Default is **No Edge**.

**Edge Color**: Options include **Default**, **White**, **Black**, **Red**, **Green**, **Blue**, **Yellow**, **Magenta**, **Cyan**. Default is **White**.

**Return to Default**: This option sets **Size**, **Font Style**, **Foreground Color**, **Background Color**, **Window Color**, **Foreground Opacity**, **Background Opacity**, **Window Opacity**, **Edge Type**, and **Edge Color** to its default.

🔗 **Digital Caption Options** are available only when you can select **Default** and **Service1 ~ Service6** in **Caption Mode**.

🔗 The **Foreground** and **Background** cannot be set to the same color.

### Boot Logo

Enable/disable displaying the logo while the TV starts up.

### Eco Solution

■ **Energy Saving (Off / Low / Medium / High / Picture Off)**: This adjust the brightness of the TV in order to reduce power consumption. If you select **Picture Off**, the screen is turned off, but the sound remains on. Press any button except volume button to turn on the screen.

■ **No Signal Power Off (Off / 15 min. / 30 min. / 60 min.)**: Sets how quickly the TV switches to standby mode, if no picture is being received.

🔗 Disabled when the PC is in power saving mode.

■ **Auto Power Off (off/on)**: The TV will be automatically turned off when no user operation is received for 4 hours.

### Auto Protection Time

■ **Auto Protection Time (Off / 2 hours / 4 hours / 8 hours / 10 hours)**: If the screen remains idle with a still image for a certain period of time defined by the user, the screen saver is activated to prevent the formation of ghost images on the screen.

## Support Menu

### Self Diagnosis

■ **Picture Test**: Use to check for picture problems. If the problem continues to occur, check the color pattern.

■ **Sound Test**: Use the built-in melody sound to check for sound problems.

■ **Signal Strength**: (digital channels only) An HD channel's reception quality is either perfect or the channels are unavailable. Adjust your antenna to increase signal strength.

■ **Reset**: Reset all settings to the factory defaults.

🔗 The PIN input screen appears before the setup screen.

🔗 Enter your 4-digit PIN. Change the PIN using the **Change PIN** option.

### Software Upgrade

Software Upgrade can be performed by downloading the latest firmware from [samsung.com](http://samsung.com) to a USB memory device.

### Use Mode

MENU ▢ → Support → Use Mode → ENTER ⏏

Select the Use Mode suitable for your place. We strongly recommend you select **Home Use**.

● **Home Use**: Home Use is the default setting.

● **Store Demo**: **Store Demo** is for retail environments only. If you select **Store Demo**, some functions will not work, and the picture settings will be reset every 5 minutes.

### HD Connection Guide

Refer to this information when connecting external devices to the TV.

### Contact Samsung

View this information when your TV does not work properly or when you want to upgrade the software. You can find information regarding our call centers and how to download products and software.

## Media Play

### Using the Media Play

Enjoy photos, music or movie files saved on a USB Mass Storage Class (MSC) device.



### Using the Media Play Menu

1. Press the MENU button. Press the ▲ or ▼ button to select **Applications**, then press the ENTER ⏏ button.

2. Press the ▲ or ▼ button to select **Media Play (USB)**, then press the ENTER ⏏ button.

3. Press the ◀▶ or ▶ button to select an icon (**Videos**, **Music**, **Photos**, **Settings**), then press the ENTER ⏏ button.

🔗 It might not work properly with unlicensed multimedia files.

🔗 **Need-to-Know List** before using **Media Play (USB)**

- Supported file systems are FAT and NTFS.
- Certain types of USB Digital camera and audio devices may not be compatible with this TV.
- Media Play** only supports USB Mass Storage Class (MSC) devices. MSC is a Mass Storage Class Bulk-Only Transport device. Examples of MSC are Thumb drives and Flash Card Readers. Devices should be connected directly to the TV's USB port. USB HDD is not supported.

● Before connecting your device to the TV, please back up your files to prevent them from damage or loss of data. SAMSUNG is not responsible for any data file damage or data loss.

● A USB device that requires high power (more than 0.5A) may not be supported.

● Do not disconnect the USB device while it is loading.

● The higher the resolution of the image, the longer it takes to display on the screen.

● The maximum supported JPEG resolution is 15360 x 8640 pixels.

● If a file is corrupted or the TV does not support the file type, the "Not Supported File Format" message appears.

● The TV cannot play MP3 files with DRM that have been downloaded from a for-pay site. Digital Rights Management (DRM) is a technology that supports the creation, distribution, and management of digital content in an integrated and comprehensive way, including protecting the rights and interests of content providers, preventing illegal copying of contents, and managing billings and settlements.

● PTP device is not supported.

● If the TV has no input during the time set in **Auto Protection Time**, the Screensaver will run.

● If you use a USB extension cable, the TV may not recognize the USB device or may not be able to read the files on the device.

● If a USB device connected to the TV is not recognized, the list of files on the device is corrupted, or a file in the list is not played, connect the USB device to a PC, format the device, and check the connection.

● If a file you deleted from the PC is still found when you run **Media Play**, use the "Empty the Recycle Bin" function on the PC to permanently delete the file.

● **Photos** only supports sequential jpeg format.

● The scene search and thumbnail functions are not supported in the **Videos**.

● If the number of files and folders saved on a USB storage device is approximately over 4000, the files and folders may not appear and some folders may not be opened.

● The maximum displayed number of files, including sub folders, in one folder of USB storage device is 2000.

● The media may not be playing smoothly when using the device lower than USB 2.0.

### Videos

1. Press the ◀▶ buttons to select **Videos**, then press the ENTER ⏏ button in the **Media Play** menu.

2. Press the ◀▶/▲▼ buttons to select the desired video in the file list.

3. Press the ENTER ⏏ button or ▶ (Play) button.

– The selected file is displayed on the top with its playing time.

– If video time information is unknown, playing time and the progress bar are not displayed.

– During video playback, you can search using the ◀▶ buttons.

🔗 In this mode, you can play movie clips contained in a game, but you cannot play the game itself.

● Supported Subtitle Formats

– External

Name	File extension
MPEG-4 timed text	.ttml
SAMI	.sml
SubRip	.srt
SubViewer	.sub
Micro DVD	.sub or .txt
SubStation Alpha	.ssa
Advanced SubStation Alpha	.ass

– Internal

Name	Container	Format
Xsub	AVI	Picture Format
SubStation Alpha	MKV	Text Format
Advanced SubStation Alpha	MKV	Text Format
SubRip	MKV	Text Format
MPEG-4 Timed text	M4A	Text Format

● Supported Video Formats

File Extension	Container	Video Codec	Resolution	Frame rate(fps)	Bit rate(kbps)	Audio Codec
*.mp4	M4A	H264	1920x1080	6-30	20Mbps	MPS / LPCM / AAC
	Xsub	VC-1	1920x1080	6-30	20Mbps	
		MPEG	640x480	6-30	10Mbps	
**avi	AVI	MPEG V2/4	1920x1080	6-30	20Mbps	MPS / ACS / LPCM / ADPCM
**mkv*	MKV*	H264	1920x1080	6-30	20Mbps	
		MPEG	640x480	6-30	10Mbps	
**avi*		MPEG V2/4	1920x1080	6-30	20Mbps	MPS / ACS / LPCM / ADPCM / WMA Pro
**asf*	ASF	H.264	1920x1080	6-30	20Mbps	
**ts	TS	MPEG-15	1920x1080	6-30	20Mbps	ACS / AAC / MP3 / DDP
**mpg	PS	MPEG1	1920x1080	6-30	20Mbps	ACS / MP3 / AAC
**mpg		MPEG2	1920x1080	6-30	20Mbps	
**vob*		H.264	1920x1080	6-30	20Mbps	
*.3gp	3GPP	MPEG V2/4	1920x1080	6-30	20Mbps	MPS
		H.264	1920x1080	6-30	20Mbps	
*.flv	flash formats	H.264	1920x1080	6-30	20Mbps	MPS
		Sorenson H.263	1920x1080	6-30	20Mbps	

### Other Restrictions

● Video content will not play, or not play correctly, if there is an error in the content or the container.

● Sound or video may not work if the contents have a standard bit rate/frame rate above the compatible Frame/sec listed in the table above.

● If the Index Table is in error, the Seek (Jump) function is not supported.

● The menu may take longer to appear if the video's bit rate exceeds 10Mbps.

● Video content can not be played, if there are many contents in one file.

● This product does not support DivX and DTS codecs.

Video Decoder	Audio Decoder
Supports up to H.264, Level 41 H.264 FMO / ASO / RS, VCI SP / MP / AP L4 and AVC/HD are not supported. MPEG4 SP, ASP	Supports up to WMA7, 8, 9 STD, 9 PRO, and 10 PRO. WMA 9 PRO and WMA10 PRO support 5.1 channel. (LBR mode of WMA Pro is not supported.) WMA Lossless is not supported. GMC is not supported.

### Music

1. Press the ◀▶ buttons to select **Music**, then press the ENTER ⏏ button in the **Media Play** menu.

2. Press the ◀▶/▲▼ buttons to select the desired Music in the file list.

🔗 During music playback, you can search using the ◀▶ buttons.

🔗 ◀▶ (REW) and ▶▶ (FF) buttons do not function during play.

🔗 **Media Play** only displays files with MP3 and PCM file extension. Other file extensions are not displayed, even if they are saved on the same USB device.

🔗 If the sound is abnormal when playing MP3 files, adjust the **Equalizer** in the **Sound** menu. (An over-modulated MP3 file may cause a sound problem.)

● Supported Music file Formats

File Extension	Type	Codec
*.mp3	MPEG	MPEG1 Audio Layer 3
*.wav	wav	wav

### Photos

1. Press the ◀▶ buttons to select **Photos**, then press the ENTER ⏏ button in the **Media Play** menu.

2. Press the ◀▶/▲▼ buttons to select the desired photo in the file list.

3. Press the ENTER ⏏ button or ▶ (Play) button.

🔗 **NOTE**

- While a photo list is displayed, press the ▶ (Play) / ENTER ⏏ button on the remote control to start the slide show.

– All photos in the file list section will be displayed in the slide show.

– During the slide show, files are displayed in order.

– During the slide show, you can adjust the slide show speed using ◀▶ (REW) or ▶▶ (FF) button.

– You can move to other file using the ◀▶ buttons.

🔗 **Media Play** can play Music files automatically during a Slide Show if **Background Music** is set to **On**.

🔗 You cannot change the **Mode** in **Background Music** until the Background Music file has finished loading.

● Supported Photo Formats

Image	Photo	Resolution
JPEG	Base-Line	15360 x 8704
	Progressive	1024 x 768

### Other Restrictions

CMYK and YCCK Color space JPEGs are not supported.

### Playing Multiple Files

■ **Playing selected video/music/photo files**

1. On the File List screen, highlight a file, and then press the Yellow button on your remote.

2. Repeat Step 1 to select multiple files.

🔗 **NOTE**

– The ✓ mark appears to the left of the selected files.

– To cancel a selection, press the Yellow button again.

– To deselect all selected files, press the **TOOLS** button, select **Deselect All**, and then the ENTER ⏏ button.

3. Press the **TOOLS** button, and then select **Play Selected Contents**, and then press the ENTER ⏏ button.

■ **Playing the video/music/photo file group**

1. With the folders on your USB device displayed, use the ◀▶/▲▼ buttons to highlight a folder.

2. Press the **TOOLS** button, and then select **Play Folder**, and then press the ENTER ⏏ button.

### Media Play -Additional Functions

■ **Videos/Music/Photos Play Option menus**

When playing a file, press the **TOOLS** button.

Category	Operation	Videos	Music	Photos
<b>Title</b>	You can move the other file directly.	✓		
<b>Repeat Mode</b>	You can play movie and music files repeatedly.	✓	✓	
<b>Picture Size</b>	You can adjust the picture size to your preference.	✓		
<b>Picture Mode</b>	You can adjust the picture setting.	✓	✓	✓
<b>Sound Mode</b>	You can adjust the sound setting.	✓	✓	✓
<b>Subtitle Settings</b>	You can play the video with Subtitles. This function only works if the subtitles are the same file name as the video.	✓		
<b>Audio Format</b>	You can select the digital audio output format.	✓		
<b>Audio Language</b>	You can change the audio language if the video has more than one language.	✓		
<b>Stop Slide Show / Start Slide Show</b>	You can start or stop a Slide Show.			✓
<b>Slide Show Speed</b>	You can select the slide show speed during the slide show.			✓
<b>Background Music</b>	You can set and select background music when watching a Slide Show.			✓
<b>Zoom</b>	You can zoom into images in full screen mode.			✓
<b>Rotate</b>	You can rotate images in full screen mode.			✓
<b>Information</b>	You can see detailed information about the played file.	✓	✓	✓

### Settings

### Using the Setup Menu

■ **Information**: Select to view information on the connected device.

### Using the Sports Mode

### Sports Mode

This mode provides optimised condition for watching sports games.

🔗 When the **Sports Mode** is **On**, the picture and sound modes are set to **Stadium** automatically.

## Other Information

### Installing the Wall Mount Kit

The wall mount kit (sold separately) allows you to mount the TV on the wall.

For detailed information on installing the wall mount, see the instructions provided with the wall mount items. Contact a technician for assistance when installing the wall mount bracket. Samsung Electronics is not responsible for any damage to the product or injury to yourself or others if you elect to install the wall mount on your own.

### Wall Mount Kit Specifications (VESA)

🔗 The wall mount kit is not supplied, but sold separately. Install your wall mount on a solid wall perpendicular to the floor. When attaching to other building materials, please contact your nearest dealer. If you install the TV on a ceiling or slanted wall, it may fall and result in severe personal injury.

🔗 **NOTE**

● Standard dimensions for wall mount kits are shown in the table below.

● When purchasing our wall mount kit, a detailed installation manual and all parts necessary for assembly are provided.

● Do not use screws that do not comply with the VESA standard screw specifications.

● Do not use screws that are longer than the standard dimension or do not comply with the VESA standard screw specifications. Screws that are too long may cause damage to the inside of the TV set.

● For wall mounts that do not comply with the VESA standard screw specifications, the length of the screws may differ depending on the wall mount specifications.

● Do not fasten the screws too firmly. This may damage the product or cause the product to fall, leading to personal injury. Samsung is not liable for these kinds of accidents.

● Samsung is not liable for product damage or personal injury when a non-VESA or non-specified wall mount is used or if the consumer fails to follow the product installation instructions.

● Do not mount the TV at more than a 15 degree tilt.

● Always have two people mount the TV on a wall.

Product Family	TV size in inches	VESA screw hole specs (A * B) in millimeters	C	Standard Screw	Quantity
LED-TV	23.6	75.0 x 75.0			