

# Epson® SureLab® D700 Series

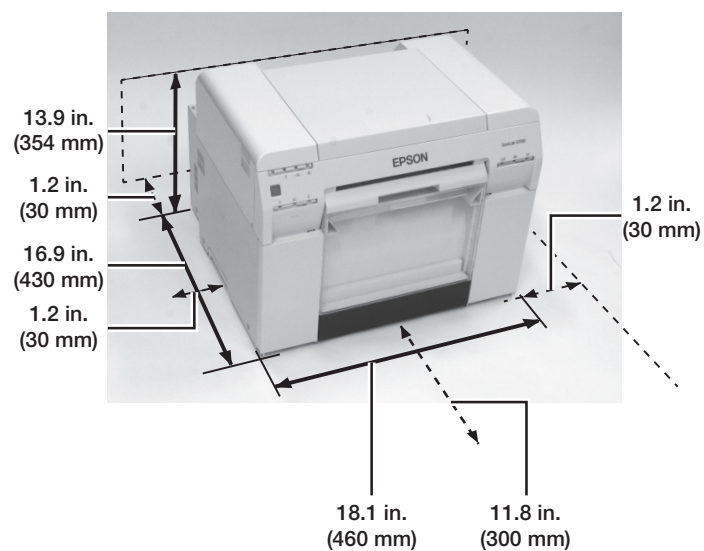
## Start Here

**IMPORTANT:** Before using this product, make sure you read these instructions and the safety instructions in the online *Operation Guide*.

### Choose a location for the printer

Choose a location for the printer that is near a wall outlet where the power cord can be easily unplugged. Avoid places subject to rapid changes in temperature and humidity. Also keep the printer away from direct sunlight, strong light, or heat sources.

Make sure to place the printer on a flat, stable surface with enough space on all sides.



### Unpack

1 Make sure you have these items:



Printer



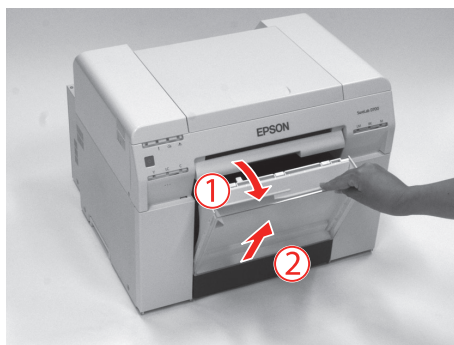
Limited warranty



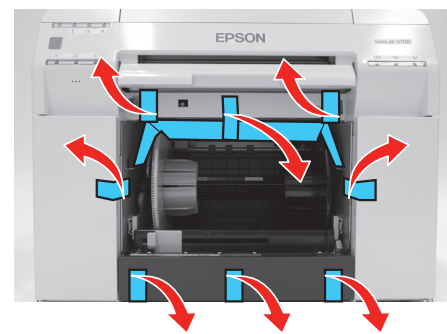
Power cord

2 Remove all of the packaging materials and tape from the outside of the printer.

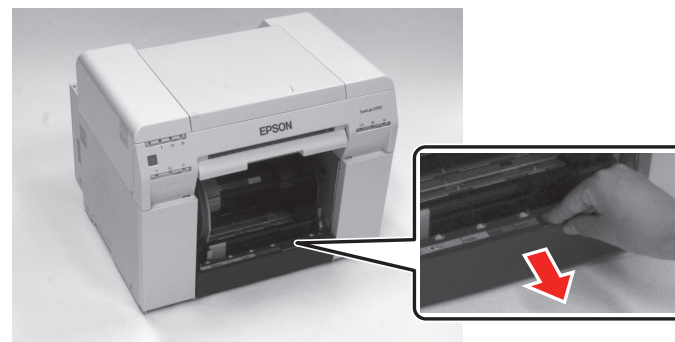
3 Remove the scrap paper box.



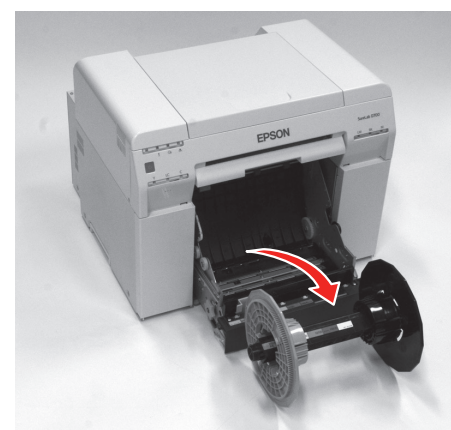
4 Remove all the packaging materials and tape from inside the roll paper feeder.



5 Grip the handle to release the roll paper feeder and pull it out.

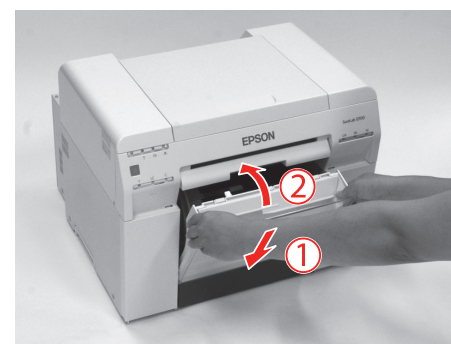


6 Remove the spindle and set it aside.

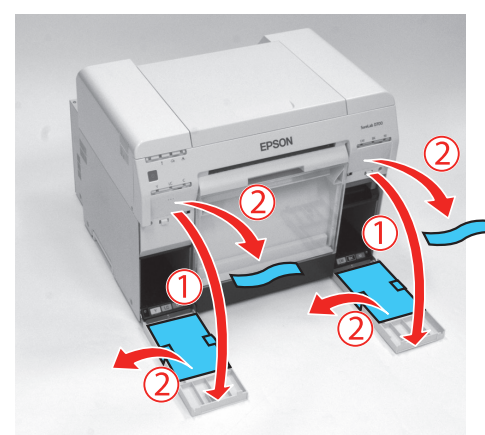


7 Push the roll paper feeder back into the printer.

8 Reattach the scrap paper box.

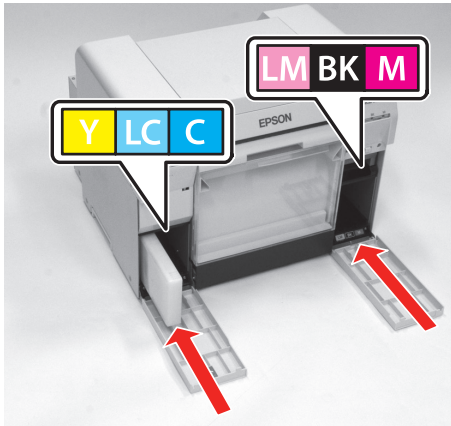


9 Open the ink cartridge covers and remove the packaging materials and tape from inside the printer.

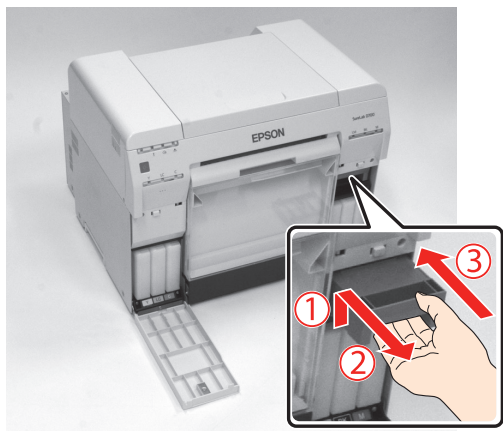


## Install ink cartridges

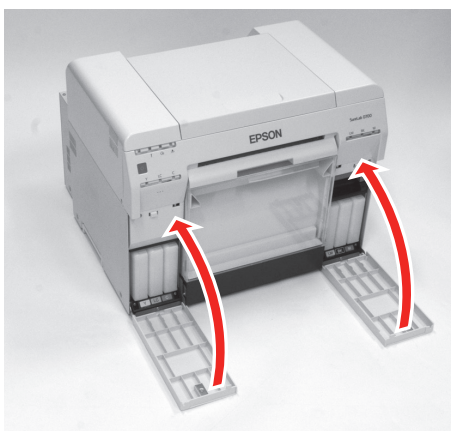
- 1 Remove the ink cartridges from their packages.  
**Caution:** Do not touch the green chip on top of the cartridge.
- 2 Insert each cartridge into the correct slot for its color.



- 3 Remove and reinsert the maintenance cartridge.



- 4 Close the ink cartridge covers.



- 5 Connect the power cord.



- 6 Press the power button on the printer.



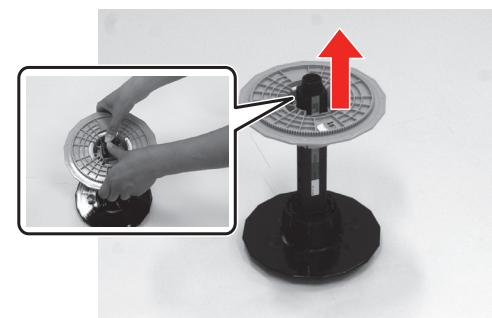
- 7 The printer starts charging the ink. This takes about 20 minutes.

**Caution:** Do not turn off or unplug the printer while the power light is flashing. Also, do not open the ink cartridge covers during the charging process.

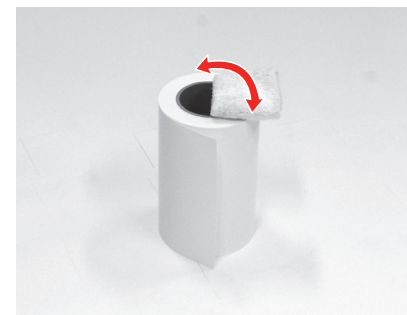
**Note:** The first time you install ink cartridges, the printer uses some ink to charge the printing system, so print yields may be lower with the first cartridges. Subsequent ink cartridges will last for their full rated yield.

## Load paper

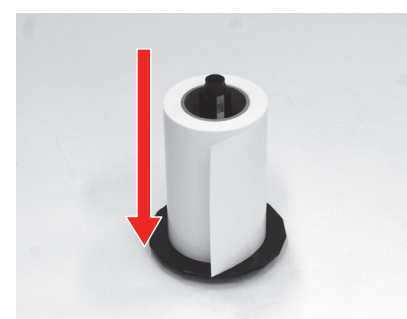
- 1 Make sure the printer is on.
- 2 Stand the spindle on its side and remove the gray adapter.



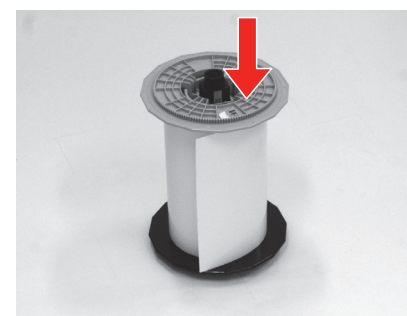
- 3 Remove the paper roll from its packaging. Remove any tape and protective paper from the end of the roll.
- 4 Stand the paper roll on its side and wipe the edge of the paper roll with a soft, clean cloth several times to remove any dust. Flip the paper roll and repeat the process.



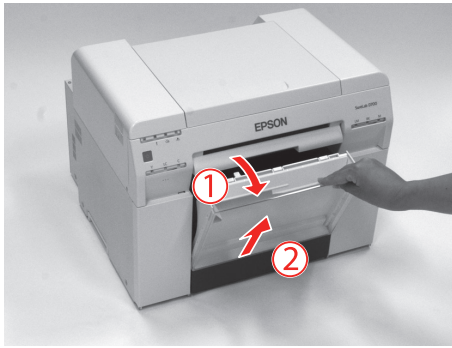
- 5 Place the paper roll on the spindle unit so that the paper winds clockwise.



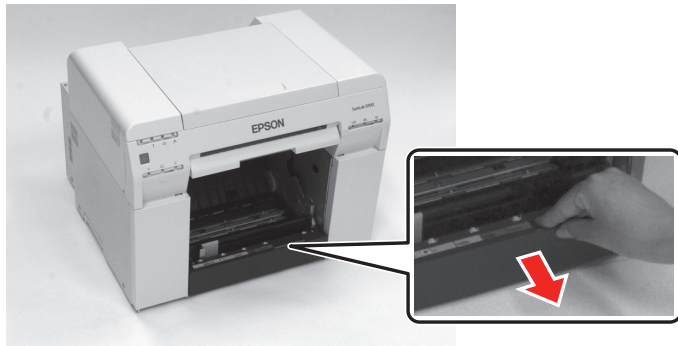
- 6 Insert the gray adapter onto the spindle and press down until there is no gap between the adapter and the roll paper.



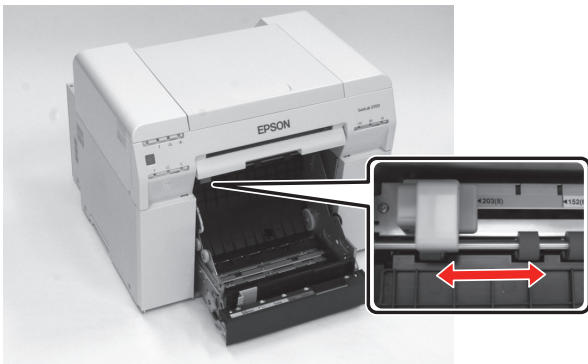
7 Remove the scrap paper box.



8 Grip the handle to release the roll paper feeder and pull it out.

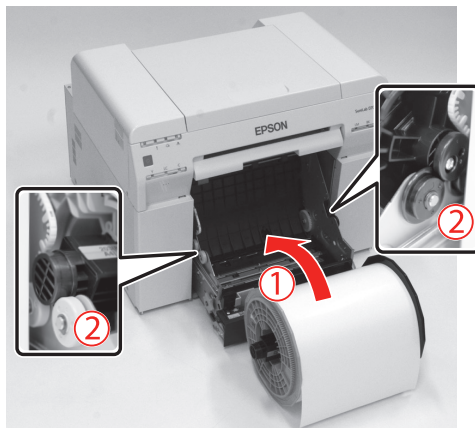


9 Lift the inner edge guide towards you and slide it to the width of the roll paper.

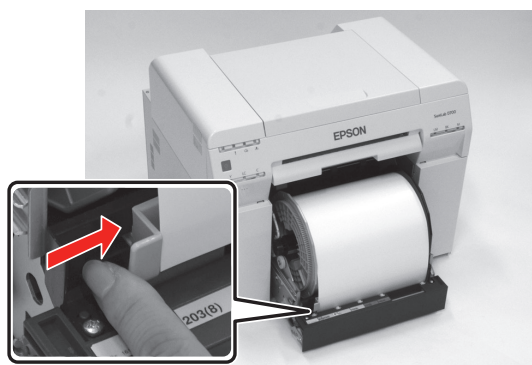


10 Load the roll paper spindle into the printer with the gray adapter on the left.

**Note:** Make sure the spindle fits between the rollers as shown.

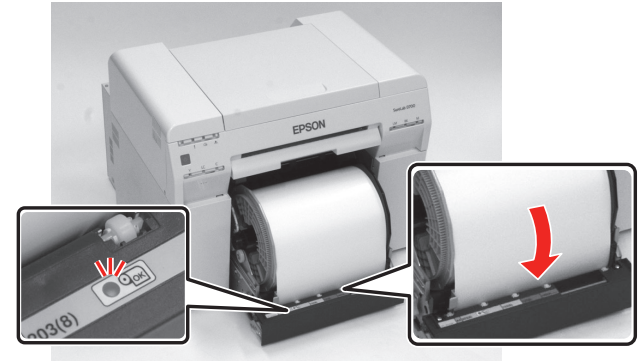


11 Lift the end of the front edge guide and slide it to the width of the roll paper.



12 Insert the leading edge of the paper into the paper feed slot until the paper light turns on.

**Note:** Make sure the leading edge is cut straight across to avoid paper feeding problems.



13 Push the roll paper feeder back into the printer.

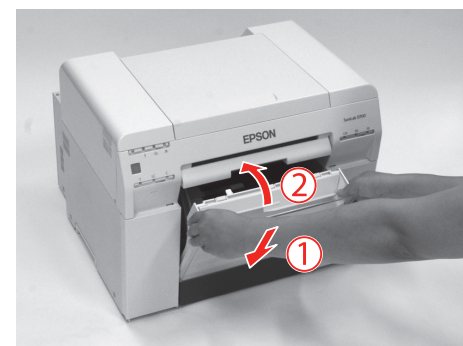


14 Carefully roll the paper into the printer to remove any slack.

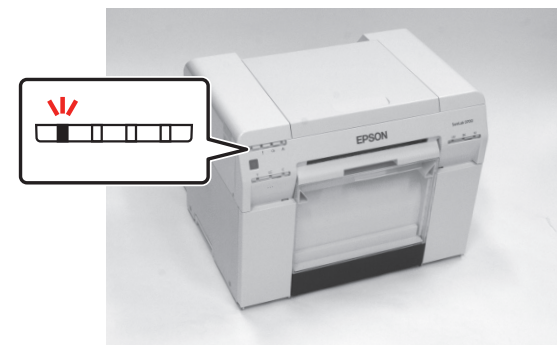
**Note:** If there is any slack in the paper, print quality may decline and paper jams could occur.



15 Reattach the scrap paper box.



16 Check that the power light is on.



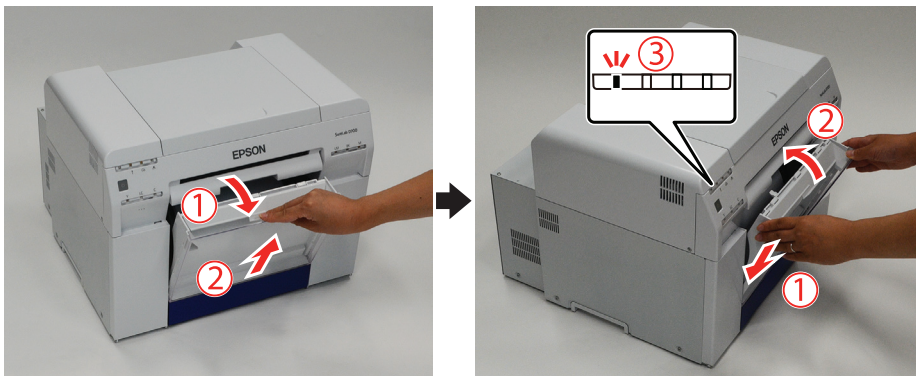
## Install the driver

- 1 Turn off the printer.
- 2 Connect a USB cable to the printer and your computer.
- 3 Download and run your product's software package:  
[www.epson.com/support/d700](http://www.epson.com/support/d700) (U.S.) or  
[www.epson.ca/support/d700](http://www.epson.ca/support/d700) (Canada).
- 4 Follow the instructions on the screen to run the setup program.

## Removing the paper

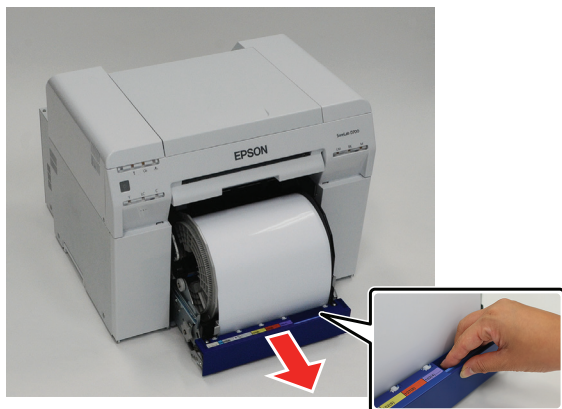
If you need to remove the roll paper from the product, make sure you follow these steps.

- 1 Check that the printer's power light is on and not flashing.
- 2 Remove the scrap paper box and reattach it.

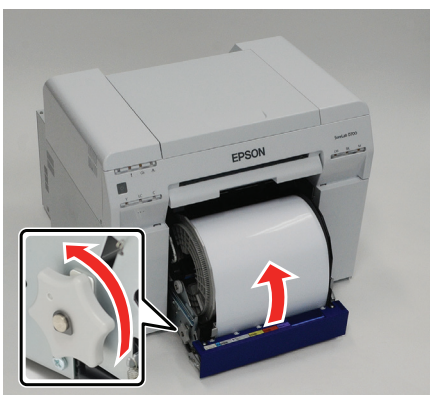


The power light flashes, then remains lit.

- 3 Remove the scrap paper box again.
- 4 Grip the handle to release the roll paper feeder and pull it out.



- 5 Turn the knob on the left of the roll paper feeder counter clockwise until the leading edge comes out of the paper feed slot.



You can now remove the roll paper spindle from the printer.

## Product support

### Epson technical support

Visit [www.epson.com/support/d700](http://www.epson.com/support/d700) (U.S.) or [www.epson.ca/support/d700](http://www.epson.ca/support/d700) (Canada) to download software and utilities, view manuals, get FAQs, or contact Epson.

Epson provides technical support and information on the installation, configuration, and operation of professional printing products through the Epson Preferred<sup>SM</sup> Limited Warranty Plan. Dial (888) 377-6611, 6 AM to 6 PM, Pacific Time, Monday through Friday. Days and hours of support are subject to change without notice. Before you call, make sure you have your:

- Printer serial number: \_\_\_\_\_
- Proof of purchase and date: \_\_\_\_\_

**Note:** If you experience difficulty with the toll-free line, call (562) 276-1305.

### Online guides

Instructions for using your printer and maintenance tools.

## Recycling

Epson offers a recycling program for end of life hardware and ink cartridges. Please go to [www.epson.com/recycle](http://www.epson.com/recycle) (U.S.) or [www.epson.ca/recycle](http://www.epson.ca/recycle) (Canada) for information on how to return your products for proper disposal.

## Need ink?

You can purchase ink from an Epson authorized reseller. To find the nearest reseller, call 800-GO-EPSON (800-463-7766).

### Epson SureLab D700 replacement ink cartridges

Color	Part number
● Black	C13T782100
● Cyan	C13T782200
● Magenta	C13T782300
● Yellow	C13T782400
● Light Cyan	C13T782500
● Light Magenta	C13T782600

EPSON and SureLab are registered trademarks and EPSON Exceed Your Vision is a registered logomark of Seiko Epson Corporation. Epson Preferred is a service mark of Epson America, Inc.

General Notice: Other product names used herein are for identification purposes only and may be trademarks of their respective owners. Epson disclaims any and all rights in those marks.

This information is subject to change without notice.

© 2018 Epson America, Inc., 7/18

Printed in U.S.A.

CPD-56246