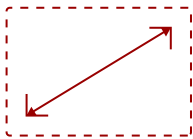


65" OS-FREE COMMERCIAL DISPLAY, 3840 X 2160 RESOLUTION, 500 CD/M2 HIGH BRIGHTNESS, 24/7 OPERATION RATING, HDMIX3, USB-C, 3.5MM AUDIO IN/OUT, AV CONTROL SYSTEM INTEROPERABILITY, LANDSCAPE AND PORTRAIT MODE

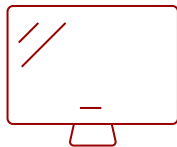
## Key Features

---

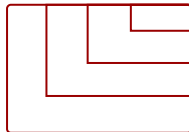
- **OPTIMIZED FOR VIDEOCONFERENCING:** Clear 4K visuals and reliable performance for smooth, professional meetings.
- **FAST STARTUP:** Boots in seconds so meetings start on time, every time.
- **SIMPLE CONNECTIVITY:** One USB-C cable plus HDMI for quick, easy laptop connections.
- **SEAMLESS AV INTEGRATION:** Certified for Q-SYS, compatible with Crestron, Extron, and AMX.
- **FLEXIBLE INSTALLATION:** Supports portrait or landscape mounting to fit any space.



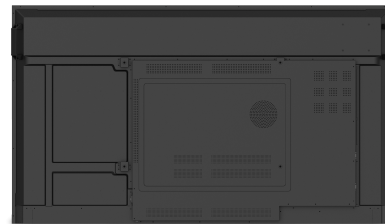
65  
DISPLAY



VA  
PANEL



RESOLUTION



## Product Description

---

The ViewSonic® CDE65G3 is a 65" commercial display designed to make meetings, trainings, and videoconferences fast, simple, and professional. Its 4K UHD resolution ensures crisp visuals for presentations and video calls, while 24/7 commercial-grade reliability keeps it running smoothly in huddle rooms, conference rooms, and executive offices. Booting in as fast as 8 seconds, the CDE65G3 gets your meetings started on time without delays. A single USB-C cable plus HDMI lets you easily connect laptops, share content, and power devices, making setup quick and effortless. Q-SYS certified and compatible with Crestron, Extron, and AMX, it integrates seamlessly into existing AV systems. With no operating system to manage, this OS-free display reduces security risks and IT complexity, giving your team a safer, low-maintenance solution. The versatile 65" size fits perfectly in a variety of meeting spaces while delivering big-screen impact.

# Specifications

---

	More Information
<b>UPC</b>	766907035704
<b>Internal Speakers</b>	10-watt (x2)
<b>Voltage</b>	100-240 VAC +/- 10% Wide Range, 50-60Hz +/-3 Hz
<b>Consumption (max)</b>	145.8W
<b>Consumption (typical)</b>	101.7W
<b>Stand-by</b>	<0.5W
<b>On Screen Display</b>	Picture, Screen, Audio, Time, Tiling, PIP, Advanced Options, About
<b>Temperature</b>	32-104° F (0 - 40° C)
<b>Humidity (non-condensing)</b>	20-80%
<b>CPU</b>	MTK 3683
<b>Media Player Type</b>	Yes
<b>Screen Size</b>	65
<b>Viewable Area (in.)</b>	64.5
<b>Orientation</b>	Landscape / Portrait
<b>Colors</b>	1.07B
<b>Color Space Support</b>	100% sRGB (8 bit + FRC)
<b>Light Source</b>	DLED
<b>Display Resolution</b>	3840 x 2160
<b>Refresh Rate</b>	60Hz
<b>Panel Type</b>	VA
<b>Aspect Ratio</b>	16:9
<b>Static Contrast Ratio</b>	5,000:1
<b>Viewing Angles</b>	178° horizontal, 178° vertical
<b>Backlight Life (Hours)</b>	50,000
<b>Response Time (Typical GTG)</b>	6.5ms
<b>Brightness</b>	500 cd/m2
<b>Panel Surface</b>	Anti-Glare type, Hard-coating (3H), Haze 25%
<b>Operation Rating</b>	24/7
<b>Gross (kg)</b>	31.1
<b>Net (kg)</b>	22.8
<b>Net (lbs)</b>	50.16
<b>Gross (lbs)</b>	68.6
<b>USB 2.0</b>	2

<b>USB Type C</b>	1
<b>RS232 In</b>	1
<b>HDMI 2.1 In</b>	3
<b>VGA</b>	1
<b>Ethernet LAN (RJ45)</b>	1
<b>3.5mm Audio In</b>	1
<b>3.5mm Audio Out</b>	1
<b>SPDIF</b>	1
<b>Packaging (mm)</b>	1640 x 960 x 185
<b>Bezel Width (mm)</b>	15.9
<b>Physical (mm)</b>	1466.7 x 841 x 79.7
<b>Packaging (in.)</b>	63.96 x 37.44 x 7.22
<b>Bezel Width (in.)</b>	0.625
<b>Physical (in.)</b>	57.74 x 33.11 x 3.14
<b>VESA Compatible</b>	600 x 400 mm
<b>Regulations</b>	cTUs, FCC, Energy Star 8.0, RoHS, Mexico NOM, Mexico Energy
<b>Package Contents</b>	CDE65G3 Commercial Display, Remote control with batteries, Quick Start Guide, Power cable (3m), HDMI Cable (3m), Wall Mount Screws (x4) and RS232 adapter
<b>Recycle/Disposal</b>	Please dispose of in accordance with local, state or federal laws.
<b>Warranty</b>	Three-year limited warranty on parts, labor and backlight

UPC: 766907035704



**Contact Sales**  
[ViewSonic.com](http://ViewSonic.com)  
 888.881.8781  
 email:  
[salesinfo@viewsonic.com](mailto:salesinfo@viewsonic.com)