

# Intelligent Video Security Built to Simplify Investigations



## Overview

Verkada’s Dome Series offers enterprise-grade security in a range of models for indoor and outdoor use. These hybrid cloud cameras have durable, vandal-resistant designs and can capture images with up to 4K resolution. They are easy to install and require no additional setup, downloads, or configuration.

The Dome Series has standard features like data encryption, onboard storage, and advanced motion-based insights. This allows organizations to quickly scale their security coverage and increase situational awareness across multiple locations.

These cameras also have powerful edge processing capabilities that deliver advanced computer vision features, including Verkada’s People and Vehicle Analytics. This allows users to quickly filter people and vehicles based on attributes like clothing color, gender traits and facial matches, as well as vehicle type and color.

## Key features

### Enterprise-grade performance

- High-resolution sensors up to 4K
- Dedicated system-on-a-chip for an enhanced streaming experience
- Advanced edge processing for motion, People and Vehicle Analytics

### Storage and processing

- 256GB-3TB of onboard storage
- Up to 365 days of retention in standard quality
- Low-bandwidth impact, only using 20-50 kbps per camera at rest

### Certifications

- IP67 weather rated outdoor models
- IK10 impact rated outdoor models
- IK08 impact rated indoor models
- NDAA compliant



## Verkada's hybrid cloud architecture



### No NVR or DVRs

Industrial-grade onboard storage saves up to 365 days of continuous video<sup>1</sup>

### Easy to scale

Bandwidth friendly and supports thousands of cameras across unlimited locations

### Centralized management

Modern platform enables secure access on any device from anywhere in the world

## The Reliability of Onboard Storage, With the Accessibility of the Cloud

### Simple to install

- No NVRs, DVRs, or servers—just a PoE connection
- Cameras come online and configure in minutes
- No added software or complexities like port forwarding

### Easy to use

- Centralized management for secure remote access on any device nearly anywhere
- No training required to access footage and features
- Find, download and share footage from any device

### Advantages of cloud-managed solution

- Real-time alerts if cameras fall offline
- SAML-based integration with single-sign on (SSO) solutions
- Continuous updates with new AI features
- Instantly share live footage via SMS and email
- Live, proactive alerting based on unusual activity

### Ready for scale

- Bandwidth-friendly, operating at just 20–50 kbps
- Scale to thousands of cameras per location
- No added equipment needed to support additional cameras

### No hidden costs

- Hardware includes a 10-year warranty<sup>2</sup>
- Automatic firmware updates keep systems secure
- New features and enhancements are added at no additional costs



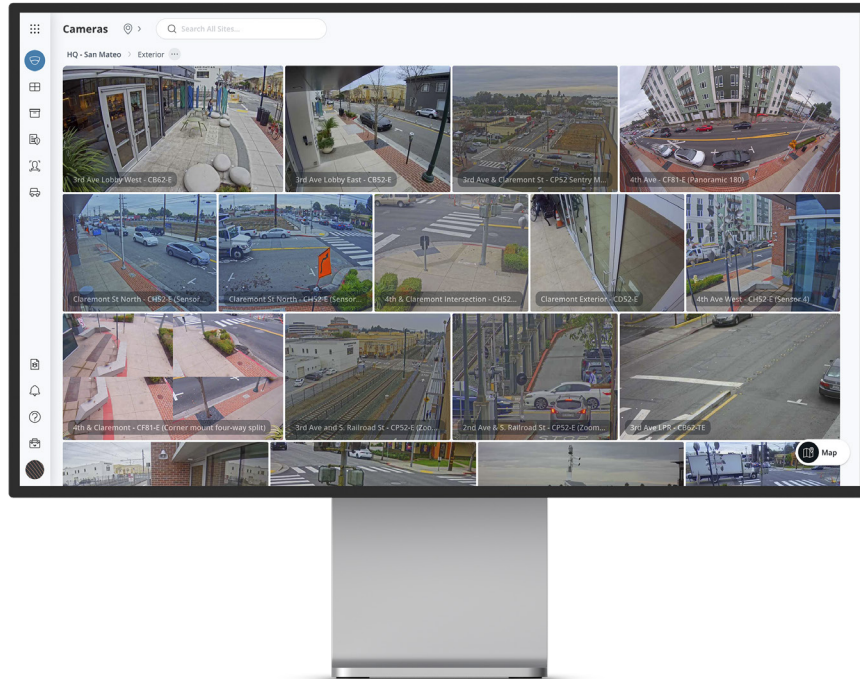
1. All our cameras record in "adaptive quality," capturing both standard and high quality streams. Standard quality (SQ) video is stored up to the amount of retention specified by the customer. The amount of high quality video stored on the camera will depend on the amount of motion detected by the camera over time. To learn more, visit our website: <https://docs.verkada.com/docs/adaptive-quality-recording-whitepaper.pdf>

2. Verkada's CD22 and CD22-E Dome cameras come with a 5-year warranty.



## Verkada Command overview

# All-in-one Cloud-based Management Software for Verkada Security Cameras



Command, Verkada’s cloud-based management software, is designed to deliver simple access and management for all cameras and users across all sites from virtually anywhere in the world. From Command, users can set up new cameras, create sites, manage settings, access live and archived footage, manage users and access the advanced features powered by Verkada’s edge-based analytics.

### Manage from anywhere

- Remotely access footage and manage sites from any supported browser or device
- Native apps for iOS, Android and Verkada’s VX52 Viewing Station
- Receive alerts for offline cameras, tampering and motion detection

### Effortlessly archive and share

- Command licenses include unlimited cloud archiving and 30-days of cloud backup
- Easily export any footage in MP4 format and allow recipients to verify its authenticity
- Share live links and floorplans with first responders

### Scale with simplicity

- Add more devices and sites without complicating the user experience
- Leverage granular roles and permissions to manage users at scale
- Bring cameras online without 3rd party plugins, thick clients or downloads

### Stay secure from the ground up

- Leverage [Enterprise Controlled Encryption](#) for robust data protection, security, and control
- Stay secure with data encrypted in transit (AES 128) and at rest (AES 256)
- Access cameras securely without port-forwarding, VPNs, or complicated configurations
- Receive automatic firmware updates to stay a step ahead of emerging threats

### Quickly detect and respond to threats

- Stay informed with customizable, intelligent alerts
- Speed up investigations with intelligent people and face detection
- Search and filter to find vehicles of interest and detected license plates

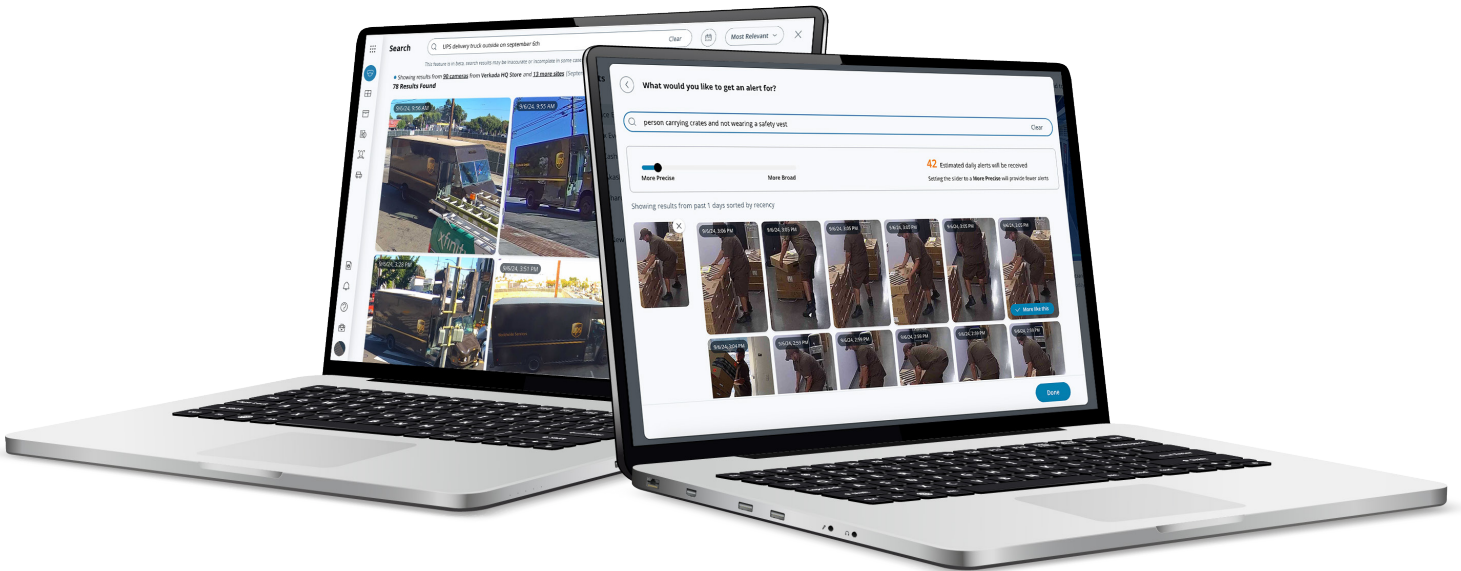
### Streamline incident management

- Consolidate relevant footage to easily review and annotate
- Share incidents while controlling permissions and retaining audit logs
- Export incidents in a zip file and auto-generate incident reports



## Verkada's AI-Powered Search

# Use Natural Language to Conduct Investigations and Create Alerts Directly Relevant to Your Organization



Verkada's AI-powered search in Command gives users the ability to search and create real-time alerts for a near-limitless number of attributes of people and vehicles across their organization. With AI-powered search, users can leverage their own words in a freeform search bar or upload a photo to search for a person or vehicle of interest and conduct highly-granular investigations in seconds.

### Use everyday language or upload an image to get results in seconds

- Search for specific attributes of people like articles of clothing, hair styles, brands, as well as attributes of vehicles, like tinted windows, text (such as "UPS truck" or "San Mateo School bus"), and bumper stickers, that make investigations more accurate and streamlined.
- Use AI-powered reverse image search to upload a photo of a person, vehicle, or object and retrieve the likeliest set of matches from one's camera fleet.<sup>2</sup> Use this reverse image analysis to see if non-person and non-vehicle objects were carried, held, worn, or attached to a person or vehicle.<sup>3</sup>
- Use AI-powered reverse image search to help identify individuals when faces are not fully visible.

### Conduct investigations that address different industry-specific use cases by time and location<sup>1</sup>

- Better investigate slip-and-fall cases, shoplifting, break-ins, occupational hazards, workplace safety compliance and more, using freeform queries.
- Organize searches by time and location for added specificity and more relevant insights of people and vehicles.
- Use "NOT," "AND," and "OR" in queries to search for multiple identifying attributes or for missing attributes (e.g., "Person driving a forklift and wearing a safety vest, but not a hardhat").

### Create proactive alerts in one click using freeform text queries

- Turn queries into action with AI-powered alerts and generate notifications directly relevant to one's security and operational needs.
- Adjust the frequency of alerts with a slider that tailors the accuracy of results.
- Share alerts in real-time and use the "More like this" feature to generate even more specific results from one's queries.

1. Check out our [User Guide](#) for example queries and methods for constructing queries relevant to organizational requirements.

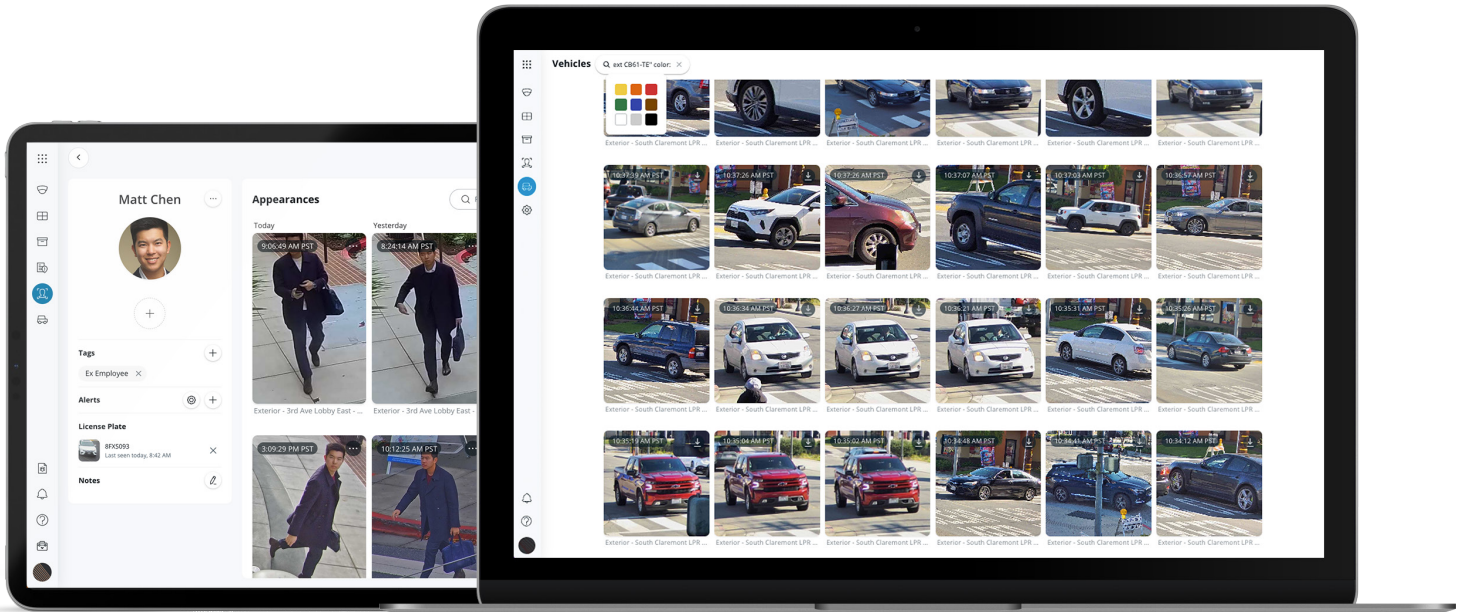
2. AI-powered reverse image analysis pulls multiple aspects of an uploaded image, like shapes, pixels, patterns, and other granular details, then delivers the most reasonable matches from one's footage.

3. Results leverage "hyperzooms," which are highly-detailed segments of a video frame that contain images of a person or a vehicle only, typically the most important parts of an investigation. If an uploaded image does not include a person or vehicle (i.e., a standalone object), results will be directed to "hyperzooms" of people and vehicles that include the object (e.g., if uploading a standalone suitcase, the search will return results of a person holding a suitcase or a suitcase attached to a vehicle).



## Verkada's People and Vehicle Analytics

# Simplify Investigations with Intelligent People, Face and Vehicle Detection



People and Vehicle Analytics combine intelligent edge-based video processing with computer vision to give users high-quality, cloud-based images of all individuals and vehicles identified in the scene. Using these analytics, customers can filter for specific attributes of people or vehicles (like clothing color or vehicle type) on a camera-by-camera basis.

## Bring Intelligence to Investigations

### Face search

- Quickly search for matching people by selecting an existing face from your organization or by uploading an image

### Person and vehicle history

- Browse through high-resolution snapshots of people and vehicles detected
- Save snapshots or easily access associated full-res video
- Search for matched people and vehicles across your entire organization with cross-camera search

### Attribute filters

- Drill-down into specific cameras to filter for people and vehicles based on a range of attributes, including clothing or vehicle color, gender appearance, vehicle body type and facial matches

### Person and License Plate of Interest notifications

- Create a Person of Interest using an uploaded photo or existing face in Command
- Capture a license plate of interest with our CB52-TE or CB62-TE Bullet cameras
- Set up proactive SMS/email alerts for when a matching face is detected by a camera
- Link License Plates of Interest to a Person of Interest

# Enterprise Controlled Encryption (ECE)



## Overview

Verkada encrypts video data at rest (i.e., on the user's device or on Verkada's cloud servers) and in transit (i.e., as data moves among devices and the cloud). ECE builds on this encryption framework by giving customers more control over their data encryption. Leveraging a well-recognized technique called [client-side encryption](#), customers can choose to keep some keys to themselves, share them with Verkada if they need technical support, or with a third party for a variety of reasons, as outlined below. ECE improves on Verkada's already robust data protection measures—empowering customers with control over their data.

**Customers must opt-in and enable ECE for their devices. ECE will not be enabled for customers by default. To opt-in, navigate to "Privacy & Security" under "Admin" settings. Click on "Enterprise Controlled Encryption" and complete all the steps.**

---

### An Added Layer of Protection

With ECE, decryption requires access to two keys: one key is on Verkada servers, while the other is stored with the customer's identity provider (e.g., Okta, Microsoft Entra ID, etc.) Both keys are required to decrypt certain data including most video history, so even if there is a breach at the identity provider or Verkada, the customer's data remains secure. ECE is, in short, an enhanced, robust security method for data storage and transfer, combining the existing secure decryption step on Verkada's servers with a second step on the customer's own devices.

---

### Customers Control Key Access

ECE puts decryption keys directly in our customers' hands—allowing them to selectively share access on an as-needed basis. This flexibility allows customers to leverage the expertise of specialized services or comply with legal requirements, while maintaining control over their data.<sup>1</sup> ECE allows the customer to decide who gets access to data, for how long, and to what extent.

---

1. Using ECE, a customer might wish to share its decryption keys with third parties for a number of reasons. A customer can allow a cybersecurity firm to conduct a safety audit to analyze video data without having permanent device access. During a time-sensitive investigation, a customer can additionally provide specific keys to law enforcement to grant access to relevant footage without exposing their entire video archive. A customer can, moreover, use a transcoding service to change the format of video or employ translation services and grant the service provider limited, task-specific access to data.



# Gain Insights Into How Spaces are Used with Multi-Camera Occupancy Trends

Verkada’s Occupancy Trends dashboard is a powerful tool that gives organizations insight into how their physical space is used. Organizations can aggregate data across multiple camera feeds, providing a comprehensive view of foot and vehicle traffic patterns throughout an area.

## The dashboard allows organizations to:

- Analyze real-time and historical occupancy data for both people and vehicles.
- Monitor trends over various timeframes (daily, weekly, monthly, or a custom date range).
- Identify peak and average occupancy and underutilized areas for both foot and vehicle traffic.

## Actionable insights to inform key operational decisions

Use Verkada’s Occupancy Trends dashboard to boost efficiency and gain actionable insights in key areas across one’s organization:

- **Staffing optimization**  
Allocate staff based on real-time occupancy needs, considering both foot and vehicle traffic patterns.
- **Inventory management**  
Anticipate demand and optimize inventory levels based on traffic patterns in storage areas and loading zones.
- **Energy efficiency**  
Identify underutilized spaces for potential HVAC adjustments based on combined foot and vehicle traffic.
- **Improved traffic flow**  
Analyze vehicle traffic patterns to identify bottlenecks and congestion points, optimizing traffic flow through signage or delivery schedule adjustments.

## Operational benefits across diverse industries



**Retail:** Optimize product placement, predict peak traffic periods (foot and vehicle), and analyze sales conversion rates.



**Manufacturing:** Improve production line workflows, identify bottlenecks, and optimize warehouse safety by monitoring foot and vehicle traffic patterns.



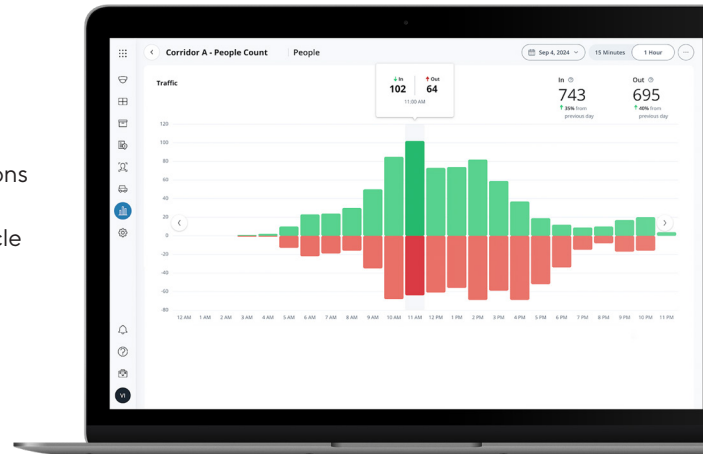
**Healthcare:** Enhance patient experience by proactively allocating resources based on real-time space usage, including foot traffic, ambulance arrivals, and parking lot activity.



**Education:** Support student safety and optimize class scheduling by understanding student movement patterns, foot and vehicle traffic around drop-off and pick-up zones.



**Real Estate:** Dynamically adjust HVAC usage based on foot traffic in one’s building, repurpose underutilized spaces, and make data-driven space planning decisions.



## Customization and collaboration

The Occupancy Trends dashboard can be customized to an organization’s specific needs. It is also easy to add other individuals in an organization to view the same dashboard—facilitating easy collaboration among building managers, EHS officers, and frontline staff.

## Maximizing value with two key views<sup>1</sup>

### 1. Summary view

See the total number, peak number, and current number of net people and vehicle occupants in and around one’s premises at specified time periods. This view allows users to compare occupancy levels across different locations.

### 2. Detailed view

The detailed view consists of two charts: “Traffic” and “Net Cumulative Occupancy.” The “Traffic” chart shows in/out patterns over a specified time period (e.g., day, week, month, or a custom range). The “Traffic” dashboard also shows any increases or decreases in occupancy over time and also shows average (mean) in/out traffic during specific time intervals.

“Net Cumulative Occupancy” shows the rolling cumulative net (in/out) occupancy from the point in time when the user resets the count. Customers can also use this view to identify when “in” occupancy peaked, hit low points, and also understand rolling average occupancy throughout one’s premises.

1. For details on how to create and interpret Occupancy Trends dashboards, read our user guide [here](#).



### Dome camera model comparison

	CD22 / CD22-E	CD32 / CD32-E	CD42 / CD42-E	CD52 / CD52-E	CD62 / CD62-E	CD63 / CD63-E
Warranty	5 years	10 years	10 years	10 years	10 years	10 years
Image sensor	3MP (2048 x 1536)	3MP (2048 x 1536)	5MP (2688 x 1944)	5MP (2688 x 1944)	4K (3840 x 2160)	4K (3840 x 2160)
IR range	10m / 33ft	15m / 49ft	15m / 49ft	30m / 98ft	30m / 98ft	40m / 130ft
<b>People Analytics</b>						
People Detection (Motion search, trajectory analysis, AI-powered alerts)	✓	✓	✓	✓	✓	✓
People Analytics (People search, attribute search, face search, Occupancy Trends, AI-powered search)		✓	✓	✓	✓	✓
<b>Vehicle Analytics</b>						
Vehicle Detection (Motion search, trajectory analysis, AI-powered alerts)	✓	✓	✓	✓	✓	✓
Vehicle Analytics (vehicle search, attribute search, Occupancy Trends, AI-powered search)		✓	✓	✓	✓	✓
<b>Additional features</b>						
Audio support		✓	✓	✓	✓	✓
Optical zoom				✓	✓	✓



## CD22 Tech Specs

### Camera features

<b>Image Sensor</b>	1/2.8" Progressive CMOS	<b>Shutter Speed</b>	1/30 sec. to 1/10,000 sec.
<b>Sensor Resolution<sup>1</sup></b>	3MP (2048 x 1536)	<b>Day/Night</b>	IR-cut filter for day and night function
<b>Lens Type</b>	Fixed	<b>IR Cut Filter</b>	Yes
<b>Focal Length</b>	2.8mm	<b>IR Range</b>	10m / 33ft
<b>Aperture</b>	F1.6	<b>Minimum Illumination</b>	0.009 lux @ F1.9 (Color) 0 lux with IR Illuminators on
<b>Iris</b>	Fixed	<b>Onboard Storage</b>	Capacity: From 256GB to 768GB Card: MicroSD, SDXC
<b>Field of View (after LDC<sup>2</sup>)</b>	Horizontal: 97° (78°) Vertical: 71° (63°) Diagonal: 128° (91°)	<b>CPU</b>	Ambarella CV25S88
<b>Sensor Movement</b>	Tilt: 60° Pan: 355° Rotation: 180°		

### Standard video settings

<b>Compression</b>	H.265, H.264	<b>Historical Video Settings</b>	Adaptive quality <sup>1</sup>
<b>Frame Rate<sup>3</sup></b>	24fps	<b>Live Streaming Settings</b>	High quality (HQ): Up to 3,000 Kbps (default) Standard quality (SQ): Up to 600 Kbps

### Standard audio settings

<b>Audio</b>	Not Supported
--------------	---------------

### Power and network

<b>Power Input<sup>4</sup></b>	With IR: IEEE 802.3af Type 1 PoE Without IR: IEEE 802.3af Type 1 PoE Extended temperature range: N/A	<b>Connectivity</b>	RJ-45 cable connector for network/PoE connection; 10 / 100 Mbps
<b>Power Consumption<sup>4</sup></b>	With IR: 37-57V, 0.23-0.15A, 8.59W Without IR: 37-57V, 0.11-0.07A, 4.25W Extended temperature range: N/A	<b>RTSP</b>	RTSP 1.0 RFC 2326 Max concurrent streams: 2 Audio support: No

1. All our cameras record in "adaptive quality," capturing both standard (SQ) and high quality (HQ) streams. SQ video is stored up to the amount of retention specified by the customer. The amount of HQ video stored on the camera will depend on the amount of motion detected by the camera over time. To learn more, visit our website: <https://docs.verkada.com/docs/adaptive-quality-recording-whitepaper.pdf>

2. Lens Distortion Correction (LDC) crops the sensor field of view to deliver a rectified, undistorted output image.

3. Frame rate can be adjusted by support.

4. Extended temperature range includes operating temperatures below -8.5°C / 16.7°F and assumes IR will be enabled.



# CD22 Tech Specs

## General

<b>Operating Temperature</b>	-10°C to 50°C / 14°F to 122°F	<b>LED Indicator</b>	System power and status indicator
<b>Humidity</b>	0 to 90%	<b>Warranty</b>	5 Years
<b>Certifications</b>	UL, FCC, CB, CE, BIS, NOM, KCC, IK08 impact rating	<b>Included Accessories</b>	Setup guide, T10 security torx screwdriver, screw pack, mounting template

## Mechanical

<b>Weight</b>	Camera: 608g / 21.45oz Mount plate: 140g / 4.94oz	<b>Body</b>	Aluminum, plastic dome trim
<b>Dimensions</b>	Ø: 146mm / 5.75in, H: 104.3mm / 4.11in with mount plate Ø: 146mm / 5.75in, H: 99.8mm / 3.93in without mount plate		

## Software capabilities

<b>Alerts</b>	Camera status, motion detection, people detection, vehicle detection, crowd detection, line-crossing detection, loitering detection	<b>Streaming and Storage</b>	Cloud backup, configurable retention days, selectable storage location, low bandwidth mode, timelapse, RTSP
<b>People Analytics</b>	Motion search, trajectory analysis	<b>Sharing and Privacy</b>	Live Links, live face blur, privacy regions, audit log
<b>Vehicle Analytics</b>	Motion search, trajectory analysis		



## CD32 Tech Specs

### Camera features

<b>Image Sensor</b>	1/2.8" Progressive CMOS	<b>Shutter Speed</b>	1/30 sec. to 1/10,000 sec.
<b>Sensor Resolution<sup>1</sup></b>	3MP (2048 x 1536)	<b>Day/Night</b>	IR-cut filter for day and night function
<b>Lens Type</b>	Fixed	<b>IR Cut Filter</b>	Yes
<b>Focal Length</b>	2.8mm	<b>IR Range</b>	15m / 49ft
<b>Aperture</b>	F1.6	<b>Minimum Illumination</b>	0.009 lux @ F1.9 (Color) 0 lux with IR Illuminators on
<b>Iris</b>	Fixed	<b>Onboard Storage</b>	Capacity: From 256GB to 768GB Card: MicroSD, SDXC
<b>Field of View (after LDC<sup>2</sup>)</b>	Horizontal: 97° (78°) Vertical: 71° (63°) Diagonal: 128° (91°)	<b>CPU</b>	Ambarella CV25S88
<b>Sensor Movement</b>	Tilt: 60° Pan: 355° Rotation: 180°		

### Standard video settings

<b>Compression</b>	H.265, H.264	<b>Historical Video Settings</b>	Adaptive quality <sup>1</sup>
<b>Frame Rate<sup>3</sup></b>	24fps	<b>Live Streaming Settings</b>	High quality (HQ): Up to 3,000 Kbps (default) Standard quality (SQ): Up to 600 Kbps

### Standard audio settings

<b>Audio</b>	Supported	<b>Interface</b>	Built-in microphone
<b>Audio Capacity</b>	One-way audio	<b>Effective Range</b>	5m / 15ft

### Power and network

<b>Power Input<sup>4</sup></b>	With IR: IEEE 802.3af Type 1 PoE Without IR: IEEE 802.3af Type 1 PoE Extended temperature range: N/A	<b>Connectivity</b>	RJ-45 cable connector for network/PoE connection; 10 / 100 Mbps
<b>Power Consumption<sup>4</sup></b>	With IR: 37-57V, 0.23-0.15A, 8.59W Without IR: 37-57V, 0.11-0.07A, 4.25W Extended temperature range: N/A	<b>RTSP</b>	RTSP 1.0 RFC 2326 Max concurrent streams: 2 Audio support: Yes

1. All our cameras record in "adaptive quality," capturing both standard (SQ) and high quality (HQ) streams. SQ video is stored up to the amount of retention specified by the customer. The amount of HQ video stored on the camera will depend on the amount of motion detected by the camera over time. To learn more, visit our website: <https://docs.verkada.com/docs/adaptive-quality-recording-whitepaper.pdf>

2. Lens Distortion Correction (LDC) crops the sensor field of view to deliver a rectified, undistorted output image.

3. Frame rate can be adjusted by support.

4. Extended temperature range includes operating temperatures below -8.5°C / 16.7°F and assumes IR will be enabled.



# CD32 Tech Specs

## General

<b>Operating Temperature</b>	-10°C to 50°C / 14°F to 122°F	<b>LED Indicator</b>	System power and status indicator
<b>Humidity</b>	0 to 90%	<b>Warranty</b>	10 Years
<b>Certifications</b>	UL, FCC, CB, CE, BIS, NOM, KCC, IK08 impact rating	<b>Included Accessories</b>	Setup guide, T10 security torx screwdriver, screw pack, mounting template

## Mechanical

<b>Weight</b>	Camera: 608g / 21.45oz Mount plate: 140g / 4.94oz	<b>Body</b>	Aluminum, plastic dome trim
<b>Dimensions</b>	Ø: 146mm / 5.75in, H: 104.3mm / 4.11in with mount plate Ø: 146mm / 5.75in, H: 99.8mm / 3.93in without mount plate		

## Software capabilities

<b>Alerts</b>	Camera status, motion detection, people detection, vehicle detection, Person of Interest detection, crowd detection, line-crossing detection, loitering detection	<b>Streaming and Storage</b>	Cloud backup, configurable retention days, selectable storage location, low bandwidth mode, timelapse, RTSP
<b>People Analytics</b>	People search, attribute search, face search, Occupancy Trends, motion search, trajectory analysis, selective face blurring, AI-powered search <sup>5</sup>	<b>Sharing and Privacy</b>	Live Links, live face blur, privacy regions, audit log
<b>Vehicle Analytics</b>	Vehicle search, attribute search, motion search, trajectory analysis, Occupancy Trends, AI-powered search <sup>5</sup>		

5. AI-powered search is currently supported in English only.



## CD42

# Tech Specs

### Camera features

<b>Image Sensor</b>	1/2.8" Progressive CMOS	<b>Shutter Speed</b>	1/30 sec. to 1/10,000 sec.
<b>Sensor Resolution<sup>1</sup></b>	5MP (2688 x 1944)	<b>Day/Night</b>	IR-cut filter for day and night function
<b>Lens Type</b>	Fixed	<b>IR Cut Filter</b>	Yes
<b>Focal Length</b>	2.8mm	<b>IR Range</b>	15m / 49ft
<b>Aperture</b>	F1.6	<b>Minimum Illumination</b>	0.009 lux @ F1.9 (Color) 0 lux with IR Illuminators on
<b>Iris</b>	Fixed	<b>Onboard Storage</b>	Capacity: From 256GB to 2TB Card: MicroSD, SDXC
<b>Field of View (after LDC<sup>2</sup>)</b>	Horizontal: 97° (78°) Vertical: 71° (63°) Diagonal: 128° (91°)	<b>CPU</b>	Ambarella CV25S88
<b>Sensor Movement</b>	Tilt: 60° Pan: 355° Rotation: 180°		

### Standard video settings

<b>Compression</b>	H.265, H.264	<b>Historical Video Settings</b>	Adaptive quality <sup>1</sup>
<b>Frame Rate<sup>3</sup></b>	24fps	<b>Live Streaming Settings</b>	High quality (HQ): Up to 3,000 Kbps (default) Standard quality (SQ): Up to 600 Kbps

### Standard audio settings

<b>Audio</b>	Supported	<b>Interface</b>	Built-in microphone
<b>Audio Capacity</b>	One-way audio	<b>Effective Range</b>	5m / 15ft

### Power and network

<b>Power Input<sup>4</sup></b>	With IR: IEEE 802.3af Type 1 PoE Without IR: IEEE 802.3af Type 1 PoE Extended temperature range: N/A	<b>Connectivity</b>	RJ-45 cable connector for network/PoE connection; 10/100 Mbps
<b>Power Consumption<sup>4</sup></b>	With IR: 37-57V, 0.23-0.15A, 8.59W Without IR: 37-57V, 0.11-0.07A, 4.25W Extended temperature range: N/A	<b>RTSP</b>	RTSP 1.0 RFC 2326 Max concurrent streams: 2 Audio support: Yes

1. All our cameras record in "adaptive quality," capturing both standard (SQ) and high quality (HQ) streams. SQ video is stored up to the amount of retention specified by the customer. The amount of HQ video stored on the camera will depend on the amount of motion detected by the camera over time. To learn more, visit our website: <https://docs.verkada.com/docs/adaptive-quality-recording-whitepaper.pdf>

2. Lens Distortion Correction (LDC) crops the sensor field of view to deliver a rectified, undistorted output image.

3. Frame rate can be adjusted by support.

4. Extended temperature range includes operating temperatures below -8.5°C / 16.7°F and assumes IR will be enabled.



# CD42 Tech Specs

## General

<b>Operating Temperature</b>	-10°C to 50°C / 14°F to 122°F	<b>LED Indicator</b>	System power and status indicator
<b>Humidity</b>	0 to 90%	<b>Warranty</b>	10 Years
<b>Certifications</b>	UL, FCC, CB, CE, BIS, NOM, KCC, IK08 impact rating	<b>Included Accessories</b>	Setup guide, T10 security torx screwdriver, screw pack, mounting template

## Mechanical

<b>Weight</b>	Camera: 608g / 21.45oz Mount plate: 140g / 4.94oz	<b>Body</b>	Aluminum, plastic dome trim
<b>Dimensions</b>	Ø: 146mm / 5.75in, H: 104.3mm / 4.11in with mount plate Ø: 146mm / 5.75in, H: 99.8mm / 3.93in without mount plate		

## Software capabilities

<b>Alerts</b>	Camera status, motion detection, people detection, vehicle detection, Person of Interest detection, crowd detection, line-crossing detection, loitering detection	<b>Streaming and Storage</b>	Cloud backup, configurable retention days, selectable storage location, low bandwidth mode, timelapse, RTSP
<b>People Analytics</b>	People search, attribute search, face search, Occupancy Trends, motion search, trajectory analysis, selective face blurring, AI-powered search <sup>5</sup>	<b>Sharing and Privacy</b>	Live Links, live face blur, privacy regions, audit log
<b>Vehicle Analytics</b>	Vehicle search, attribute search, motion search, trajectory analysis, Occupancy Trends, AI-powered search <sup>5</sup>		

5. AI-powered search is currently supported in English only.



## CD52

# Tech Specs

### Camera features

<b>Image Sensor</b>	1/2.8" Progressive CMOS	<b>Shutter Speed</b>	1/30 sec. to 1/10,000 sec.
<b>Sensor Resolution<sup>1</sup></b>	5MP (2688 x 1944)	<b>Day/Night</b>	IR-cut filter for day and night function
<b>Lens Type</b>	Varifocal; motorized zoom	<b>IR Cut Filter</b>	Yes
<b>Focal Length</b>	2.8-8mm	<b>IR Range</b>	30m / 98ft
<b>Aperture</b>	F1.3 - F2.4	<b>Minimum Illumination</b>	0.009 lux @ F1.9 (Color) 0 lux with IR Illuminators on
<b>Iris</b>	P-Iris	<b>Onboard Storage</b>	Capacity: From 256GB to 2TB Card: MicroSD, SDXC
<b>Field of View (after LDC<sup>2</sup>)</b>	Horizontal: 38° - 105° (37° - 84°) Vertical: 29° - 77° (28° - 68°) Diagonal: 48° - 126° (45° - 97°)	<b>CPU</b>	Ambarella CV25S88
<b>Sensor Movement</b>	Tilt: 60° Pan: 355° Rotation: 350°		

### Standard video settings

<b>Compression</b>	H.265, H.264	<b>Historical Video Settings</b>	Adaptive quality <sup>1</sup>
<b>Frame Rate<sup>3</sup></b>	24fps	<b>Live Streaming Settings</b>	High quality (HQ): Up to 3,000 Kbps (default) Standard quality (SQ): Up to 600 Kbps

### Standard audio settings

<b>Audio</b>	Supported	<b>Interface</b>	Built-in microphone
<b>Audio Capacity</b>	One-way audio	<b>Effective Range</b>	5m / 15ft

### Power and network

<b>Power Input<sup>4</sup></b>	With IR: IEEE 802.3af Type 1 PoE Without IR: IEEE 802.3af Type 1 PoE Extended temperature range: N/A	<b>Connectivity</b>	RJ-45 cable connector for network/PoE connection; 10/100 Mbps
<b>Power Consumption<sup>4</sup></b>	With IR: 37-57V, 0.3-0.2A, 10.98W Without IR: 37-57V, 0.13-0.08A, 4.74W Extended temperature range: N/A	<b>RTSP</b>	RTSP 1.0 RFC 2326 Max concurrent streams: 2 Audio support: Yes

1. All our cameras record in "adaptive quality," capturing both standard (SQ) and high quality (HQ) streams. SQ video is stored up to the amount of retention specified by the customer. The amount of HQ video stored on the camera will depend on the amount of motion detected by the camera over time. To learn more, visit our website: <https://docs.verkada.com/docs/adaptive-quality-recording-whitepaper.pdf>

2. Lens Distortion Correction (LDC) crops the sensor field of view to deliver a rectified, undistorted output image.

3. Frame rate can be adjusted by support.

4. Extended temperature range includes operating temperatures below -8.5°C / 16.7°F and assumes IR will be enabled.



# CD52 Tech Specs

## General

<b>Operating Temperature</b>	-10°C to 50°C / 14°F to 122°F	<b>LED Indicator</b>	System power and status indicator
<b>Humidity</b>	0 to 90%	<b>Warranty</b>	10 Years
<b>Certifications</b>	FCC, ICES, CE, UL, CB, NOM, KCC, IK08 impact rating	<b>Included Accessories</b>	Setup guide, T10 security torx screwdriver, screw pack, mounting template

## Mechanical

<b>Weight</b>	Camera: 776g / 29.88oz Mount plate: 140g / 4.94oz	<b>Body</b>	Aluminum, plastic dome trim
<b>Dimensions</b>	Ø: 146mm / 5.75in, H: 104.3mm / 4.11in with mount plate Ø: 146mm / 5.75in, H: 99.8mm / 3.93in without mount plate		

## Software capabilities

<b>Alerts</b>	Camera status, motion detection, people detection, vehicle detection, Person of Interest detection, crowd detection, line-crossing detection, loitering detection	<b>Streaming and Storage</b>	Cloud backup, configurable retention days, selectable storage location, low bandwidth mode, timelapse, RTSP
<b>People Analytics</b>	People search, attribute search, face search, Occupancy Trends, motion search, trajectory analysis, selective face blurring, AI-powered search <sup>5</sup>	<b>Sharing and Privacy</b>	Live Links, live face blur, privacy regions, audit log
<b>Vehicle Analytics</b>	Vehicle search, attribute search, motion search, trajectory analysis, Occupancy Trends, AI-powered search <sup>5</sup>		

5. AI-powered search is currently supported in English only.



## CD62 Tech Specs

### Camera features

<b>Image Sensor</b>	1/2.8" Progressive CMOS	<b>Shutter Speed</b>	1/30 sec. to 1/10,000 sec.
<b>Sensor Resolution<sup>1</sup></b>	4K (3840 x 2160)	<b>Day/Night</b>	IR-cut filter for day and night function
<b>Lens Type</b>	Varifocal; motorized zoom	<b>IR Cut Filter</b>	Yes
<b>Focal Length</b>	2.8-8mm	<b>IR Range</b>	30m / 98ft
<b>Aperture</b>	F1.3 - F2.4	<b>Minimum Illumination</b>	0.009 lux @ F1.9 (Color) 0 lux with IR Illuminators on
<b>Iris</b>	P-Iris	<b>Onboard Storage</b>	Capacity: From 512GB to 2TB Card: MicroSD, SDXC
<b>Field of View (after LDC<sup>2</sup>)</b>	Horizontal: 41° - 116° (40° - 100°) Vertical: 23° - 62° (23° - 57°) Diagonal: 47° - 136° (45° - 106°)	<b>CPU</b>	Ambarella CV22S66
<b>Sensor Movement</b>	Tilt: 60° Pan: 355° Rotation: 350°		

### Standard video settings

<b>Compression</b>	H.265, H.264	<b>Historical Video Settings</b>	Adaptive quality <sup>1</sup>
<b>Frame Rate<sup>3</sup></b>	24fps	<b>Live Streaming Settings</b>	High quality (HQ): Up to 4,500 Kbps (default) Standard quality (SQ): Up to 600 Kbps

### Standard audio settings

<b>Audio</b>	Supported	<b>Interface</b>	Built-in microphone
<b>Audio Capacity</b>	One-way audio	<b>Effective Range</b>	5m / 15ft

### Power and network

<b>Power Input<sup>4</sup></b>	With IR: IEEE 802.3af Type 1 PoE Without IR: IEEE 802.3af Type 1 PoE Extended temperature range: N/A	<b>Connectivity</b>	RJ-45 cable connector for network/PoE connection; 10/100 Mbps
<b>Power Consumption<sup>4</sup></b>	With IR: 37-57V, 0.38-0.25A, 14.2W Without IR: 37-57V, 0.17-0.11A, 6.2W Extended temperature range: N/A	<b>RTSP</b>	RTSP 1.0 RFC 2326 Max concurrent streams: 2 Audio support: Yes

1. All our cameras record in "adaptive quality," capturing both standard (SQ) and high quality (HQ) streams. SQ video is stored up to the amount of retention specified by the customer. The amount of HQ video stored on the camera will depend on the amount of motion detected by the camera over time. To learn more, visit our website: <https://docs.verkada.com/docs/adaptive-quality-recording-whitepaper.pdf>

2. Lens Distortion Correction (LDC) crops the sensor field of view to deliver a rectified, undistorted output image.

3. Frame rate can be adjusted by support.

4. Extended temperature range includes operating temperatures below -8.5°C / 16.7°F and assumes IR will be enabled.



# CD62 Tech Specs

## General

<b>Operating Temperature</b>	-10°C to 50°C / 14°F to 122°F	<b>LED Indicator</b>	System power and status indicator
<b>Humidity</b>	0 to 90%	<b>Warranty</b>	10 Years
<b>Certifications</b>	FCC, ICES, CE, UL, CB, IK08 impact rating, IEC60950-1, KCC, BIS	<b>Included Accessories</b>	Setup guide, T10 security torx screwdriver, screw pack, mounting template

## Mechanical

<b>Weight</b>	Camera: 887g / 31.29oz Mount plate: 140g / 4.94oz	<b>Body</b>	Aluminum, plastic dome trim
<b>Dimensions</b>	Ø: 146mm / 5.75in, H: 104.3mm / 4.11in with mount plate Ø: 146mm / 5.75in, H: 99.8mm / 3.93in without mount plate		

## Software capabilities

<b>Alerts</b>	Camera status, motion detection, people detection, vehicle detection, Person of Interest detection, crowd detection, line-crossing detection, loitering detection	<b>Streaming and Storage</b>	Cloud backup, configurable retention days, selectable storage location, low bandwidth mode, timelapse, RTSP
<b>People Analytics</b>	People search, attribute search, face search, Occupancy Trends, motion search, trajectory analysis, selective face blurring, AI-powered search <sup>5</sup>	<b>Sharing and Privacy</b>	Live Links, live face blur, privacy regions, audit log
<b>Vehicle Analytics</b>	Vehicle search, attribute search, motion search, trajectory analysis, Occupancy Trends, AI-powered search <sup>5</sup>		

5. AI-powered search is currently supported in English only.



## CD63 Tech Specs

### Camera features

<b>Image Sensor</b>	1/1.2" Progressive CMOS	<b>Shutter Speed</b>	1/30 sec. to 1/10,000 sec.
<b>Sensor Resolution<sup>1</sup></b>	4K (3840 x 2160)	<b>Day/Night</b>	IR-cut filter for day and night function
<b>Lens Type</b>	Varifocal; motorized zoom	<b>IR Cut Filter</b>	Yes
<b>Focal Length</b>	5.9 - 13.3mm	<b>IR Range</b>	40m / 130ft
<b>Aperture</b>	F1.5 - F2.9	<b>Minimum Illumination</b>	0.009 lux @ F1.9 (Color) 0 lux with IR illuminators on
<b>Iris</b>	P-Iris	<b>Onboard Storage</b>	Capacity: From 512GB to 3TB Card: MicroSD, SDXC
<b>Field of View (after LDC<sup>2</sup>)</b>	Horizontal: 75° - 109° (72° - 102°) Vertical: 45° - 58° (44° - 58°) Diagonal: 82° - 113° (80° - 107°)	<b>CPU</b>	Ambarella CV72S66
<b>Sensor Movement</b>	Tilt: 65° Pan: 360° Rotation: 350°		

### Standard video settings

<b>Compression</b>	H.265, H.264	<b>Historical Video Settings</b>	Adaptive quality <sup>1</sup>
<b>Frame Rate<sup>3</sup></b>	24fps	<b>Live Streaming Settings</b>	High quality (HQ): Up to 4,500 Kbps (default) Standard quality (SQ): Up to 600 Kbps

### Standard audio settings

<b>Audio</b>	Supported	<b>Interface</b>	Built-in microphone
<b>Audio Capacity</b>	One-way audio	<b>Effective Range</b>	5m / 15ft

### Power and network

<b>Power Input<sup>4</sup></b>	With IR: PoE/IEEE 802.3at Type 2 PoE+ Extended temperature range: IEEE 802.3at Type 2 PoE+	<b>Connectivity</b>	RJ-45 cable connector for network/PoE connection; 10 / 100 / 1000 Mbps
<b>Power Consumption<sup>4</sup></b>	With IR: 42.5-57.0V, 0.48-0.36A, 20.4W Without IR: 42.5-57.0V, 0.27-0.20A, 11.3W Extended temperature range: N/A	<b>RTSP</b>	RTSP 1.0 RFC 2326 Max concurrent streams: 2 Audio support: Yes

1. All our cameras record in "adaptive quality," capturing both standard (SQ) and high quality (HQ) streams. SQ video is stored up to the amount of retention specified by the customer. The amount of HQ video stored on the camera will depend on the amount of motion detected by the camera over time. To learn more, visit our website: <https://docs.verkada.com/docs/adaptive-quality-recording-whitepaper.pdf>

2. Lens Distortion Correction (LDC) crops the sensor field of view to deliver a rectified, undistorted output image.

3. Frame rate can be adjusted by support.

4. Extended temperature range includes operating temperatures below -8.5°C / 16.7°F and assumes IR will be enabled.



# CD63 Tech Specs

## General

<b>Operating Temperature</b>	-10°C to 50°C / 14°F to 122°F	<b>LED Indicator</b>	System power, status indicator, and debug indicator
<b>Humidity</b>	0 to 90%	<b>Warranty</b>	10 Years
<b>Certifications</b>	FCC, ICES, IK08 impact rating	<b>Included Accessories</b>	Screw packs, mount plate with leveler, T10 security driver

## Mechanical

<b>Weight</b>	Camera: 1324.0g / 46.7oz Mount plate: 193.0g / 6.8oz	<b>Body</b>	Aluminum, plastic dome trim
<b>Dimensions</b>	Ø: 155mm / 6.1in, H: 111.4mm / 4.4in with mount plate Ø: 155mm / 5.1in, H: 104.4mm / 4.1in without mount plate		

## Dimensions



## Software capabilities

<b>Alerts</b>	Camera status, motion detection, people detection, vehicle detection, Person of Interest detection, crowd detection, line-crossing detection, loitering detection, AI-powered alerts	<b>Streaming and Storage</b>	Cloud backup, configurable retention days, selectable storage location, low bandwidth mode, timelapse, RTSP
<b>People Analytics</b>	People search, attribute search, face search, Occupancy Trends, motion search, trajectory analysis, selective face blurring, AI-powered search	<b>Sharing and Privacy</b>	Live links, live face blur, privacy regions, audit log
<b>Vehicle Analytics</b>	Vehicle search, attribute search, motion search, trajectory analysis, Occupancy Trends, AI-powered search		



## CD22-E

### Tech Specs

#### Camera features

<b>Image Sensor</b>	1/2.8" Progressive CMOS	<b>Shutter Speed</b>	1/30 sec. to 1/10,000 sec.
<b>Sensor Resolution<sup>1</sup></b>	3MP (2048 x 1536)	<b>Day/Night</b>	IR-cut filter for day and night function
<b>Lens Type</b>	Fixed	<b>IR Cut Filter</b>	Yes
<b>Focal Length</b>	2.8mm	<b>IR Range</b>	10m / 33ft
<b>Aperture</b>	F1.6	<b>Minimum Illumination</b>	0.009 lux @ F1.9 (Color) 0 lux with IR Illuminators on
<b>Iris</b>	Fixed	<b>Onboard Storage</b>	Capacity: From 256GB to 768GB Card: MicroSD, SDXC
<b>Field of View (after LDC<sup>2</sup>)</b>	Horizontal: 97° (78°) Vertical: 71° (63°) Diagonal: 128° (91°)	<b>CPU</b>	Ambarella CV25S88
<b>Sensor Movement</b>	Tilt: 60° Pan: 355° Rotation: 180°		

#### Standard video settings

<b>Compression</b>	H.265, H.264	<b>Historical Video Settings</b>	Adaptive quality <sup>1</sup>
<b>Frame Rate<sup>3</sup></b>	24fps	<b>Live Streaming Settings</b>	High quality (HQ): Up to 3,000 Kbps (default) Standard quality (SQ): Up to 600 Kbps

#### Standard audio settings

<b>Audio</b>	Not Supported
--------------	---------------

#### Power and network

<b>Power Input<sup>4</sup></b>	With IR: IEEE 802.3af Type 1 PoE Without IR: IEEE 802.3af Type 1 PoE Extended temperature range: IEEE 802.3at Type 2 PoE+	<b>Connectivity</b>	RJ-45 cable connector for network/PoE connection; 10 / 100 Mbps
<b>Power Consumption<sup>4</sup></b>	With IR: 37-57V, 0.23-0.15A, 8.59W Without IR: 37-57V, 0.11-0.07A, 4.25W Extended temperature range: 37-57V, 0.46-0.3A, 16.94W	<b>RTSP</b>	RTSP 1.0 RFC 2326 Max concurrent streams: 2 Audio support: No

1. All our cameras record in "adaptive quality," capturing both standard (SQ) and high quality (HQ) streams. SQ video is stored up to the amount of retention specified by the customer. The amount of HQ video stored on the camera will depend on the amount of motion detected by the camera over time. To learn more, visit our website: <https://docs.verkada.com/docs/adaptive-quality-recording-whitepaper.pdf>

2. Lens Distortion Correction (LDC) crops the sensor field of view to deliver a rectified, undistorted output image.

3. Frame rate can be adjusted by support.

4. Extended temperature range includes operating temperatures below -8.5°C / 16.7°F and assumes IR will be enabled.



# CD22-E Tech Specs

## General

<b>Operating Temperature</b>	-40°C to 50°C / -40°F to 122°F	<b>LED Indicator</b>	System power and status indicator
<b>Humidity</b>	0 to 90%	<b>Warranty</b>	5 Years
<b>Certifications</b>	FCC, ICES, CE, UL, CB, NOM, IP67 weather rating, IK10 impact rating, KCC	<b>Included Accessories</b>	Setup guide, wall mount screws & anchors (4x), T10 security torx screwdriver, mounting template, cable gland wrench, desiccant pack, conduit adapter

## Mechanical

<b>Weight</b>	Camera: 847g / 29.88oz Mount plate: 174g / 6.14oz	<b>Body</b>	Aluminum, plastic dome trim
<b>Dimensions</b>	Ø: 155mm / 6.10in, H: 114.6mm / 4.51in with mount plate Ø: 155mm / 6.10in, H: 107.6mm / 4.24in without mount plate		

## Software capabilities

<b>Alerts</b>	Camera status, motion detection, people detection, vehicle detection, crowd detection, line-crossing detection, loitering detection	<b>Streaming and Storage</b>	Cloud backup, configurable retention days, selectable storage location, low bandwidth mode, timelapse, RTSP
<b>People Analytics</b>	Motion search, trajectory analysis	<b>Sharing and Privacy</b>	Live Links, live face blur, privacy regions, audit log
<b>Vehicle Analytics</b>	Motion search, trajectory analysis		



## CD32-E Tech Specs

### Camera features

<b>Image Sensor</b>	1/2.8" Progressive CMOS	<b>Shutter Speed</b>	1/30 sec. to 1/10,000 sec.
<b>Sensor Resolution<sup>1</sup></b>	3MP (2048 x 1536)	<b>Day/Night</b>	IR-cut filter for day and night function
<b>Lens Type</b>	Fixed	<b>IR Cut Filter</b>	Yes
<b>Focal Length</b>	2.8mm	<b>IR Range</b>	15m / 49ft
<b>Aperture</b>	F1.6	<b>Minimum Illumination</b>	0.009 lux @ F1.9 (Color) 0 lux with IR Illuminators on
<b>Iris</b>	Fixed	<b>Onboard Storage</b>	Capacity: From 256GB to 768GB Card: MicroSD, SDXC
<b>Field of View (after LDC<sup>2</sup>)</b>	Horizontal: 97° (78°) Vertical: 71° (63°) Diagonal: 128° (91°)	<b>CPU</b>	Ambarella CV25S88
<b>Sensor Movement</b>	Tilt: 60° Pan: 355° Rotation: 180°		

### Standard video settings

<b>Compression</b>	H.265, H.264	<b>Historical Video Settings</b>	Adaptive quality <sup>1</sup>
<b>Frame Rate<sup>3</sup></b>	24fps	<b>Live Streaming Settings</b>	High quality (HQ): Up to 3,000 Kbps (default) Standard quality (SQ): Up to 600 Kbps

### Standard audio settings

<b>Audio</b>	Supported	<b>Interface</b>	Built-in microphone
<b>Audio Capacity</b>	One-way audio	<b>Effective Range</b>	5m / 15ft

### Power and network

<b>Power Input<sup>4</sup></b>	With IR: IEEE 802.3af Type 1 PoE Without IR: IEEE 802.3af Type 1 PoE Extended temperature range: IEEE 802.3at Type 2 PoE+	<b>Connectivity</b>	RJ-45 cable connector for network/PoE connection; 10 / 100 Mbps
<b>Power Consumption<sup>4</sup></b>	With IR: 37-57V, 0.23-0.15A, 8.59W Without IR: 37-57V, 0.11-0.07A, 4.25W Extended temperature range: 37-57V, 0.46-0.3A, 16.94W	<b>RTSP</b>	RTSP 1.0 RFC 2326 Max concurrent streams: 2 Audio support: Yes

1. All our cameras record in "adaptive quality," capturing both standard (SQ) and high quality (HQ) streams. SQ video is stored up to the amount of retention specified by the customer. The amount of HQ video stored on the camera will depend on the amount of motion detected by the camera over time. To learn more, visit our website: <https://docs.verkada.com/docs/adaptive-quality-recording-whitepaper.pdf>

2. Lens Distortion Correction (LDC) crops the sensor field of view to deliver a rectified, undistorted output image.

3. Frame rate can be adjusted by support.

4. Extended temperature range includes operating temperatures below -8.5°C / 16.7°F and assumes IR will be enabled.



# CD32-E Tech Specs

## General

<b>Operating Temperature</b>	-40°C to 50°C / -40°F to 122°F	<b>LED Indicator</b>	System power and status indicator
<b>Humidity</b>	0 to 90%	<b>Warranty</b>	10 Years
<b>Certifications</b>	FCC, ICES, CE, UL, CB, NOM, IP67 weather rating, IK10 impact rating, KCC	<b>Included Accessories</b>	Setup guide, wall mount screws and anchors (4x), T10 security torx screwdriver, mounting template, cable gland wrench, desiccant pack, conduit adapter

## Mechanical

<b>Weight</b>	Camera: 847g / 29.88oz Mount plate: 174g / 6.14oz	<b>Body</b>	Aluminum, plastic dome trim
<b>Dimensions</b>	Ø: 155mm / 6.10in, H: 114.6mm / 4.51in with mount plate Ø: 155mm / 6.10in, H: 107.6mm / 4.24in without mount plate		

## Software capabilities

<b>Alerts</b>	Camera status, motion detection, people detection, vehicle detection, Person of Interest detection, crowd detection, line-crossing detection, loitering detection	<b>Streaming and Storage</b>	Cloud backup, configurable retention days, selectable storage location, low bandwidth mode, timelapse, RTSP
<b>People Analytics</b>	People search, attribute search, face search, Occupancy Trends, motion search, trajectory analysis, selective face blurring, AI-powered search <sup>5</sup>	<b>Sharing and Privacy</b>	Live Links, live face blur, privacy regions, audit log
<b>Vehicle Analytics</b>	Vehicle search, attribute search, motion search, trajectory analysis, Occupancy Trends, AI-powered search <sup>5</sup>		

5. AI-powered search is currently supported in English only.



## CD42-E Tech Specs

### Camera features

<b>Image Sensor</b>	1/2.8" Progressive CMOS	<b>Shutter Speed</b>	1/30 sec. to 1/10,000 sec.
<b>Sensor Resolution<sup>1</sup></b>	5MP (2688 x 1944)	<b>Day/Night</b>	IR-cut filter for day and night function
<b>Lens Type</b>	Fixed	<b>IR Cut Filter</b>	Yes
<b>Focal Length</b>	2.8mm	<b>IR Range</b>	15m / 49ft
<b>Aperture</b>	F1.6	<b>Minimum Illumination</b>	0.009 lux @ F1.9 (Color) 0 lux with IR Illuminators on
<b>Iris</b>	Fixed	<b>Onboard Storage</b>	Capacity: From 256GB to 2TB Card: MicroSD, SDXC
<b>Field of View (after LDC<sup>2</sup>)</b>	Horizontal: 97° (78°) Vertical: 71° (63°) Diagonal: 128° (91°)	<b>CPU</b>	Ambarella CV25S88
<b>Sensor Movement</b>	Tilt: 60° Pan: 355° Rotation: 180°		

### Standard video settings

<b>Compression</b>	H.265, H.264	<b>Historical Video Settings</b>	Adaptive quality <sup>1</sup>
<b>Frame Rate<sup>3</sup></b>	24fps	<b>Live Streaming Settings</b>	High quality (HQ): Up to 3,000 Kbps (default) Standard quality (SQ): Up to 600 Kbps

### Standard audio settings

<b>Audio</b>	Supported	<b>Interface</b>	Built-in microphone
<b>Audio Capacity</b>	One-way audio	<b>Effective Range</b>	5m / 15ft

### Power and network

<b>Power Input<sup>4</sup></b>	With IR: IEEE 802.3af Type 1 PoE Without IR: IEEE 802.3af Type 1 PoE Extended temperature range: IEEE 802.3at Type 2 PoE+	<b>Connectivity</b>	RJ-45 cable connector for network/PoE connection; 10/100 Mbps
<b>Power Consumption<sup>4</sup></b>	With IR: 37-57V, 0.23-0.15A, 8.59W Without IR: 37-57V, 0.11-0.07A, 4.25W Extended temperature range: 37-57V, 0.46-0.3A, 16.94W	<b>RTSP</b>	RTSP 1.0 RFC 2326 Max concurrent streams: 2 Audio support: Yes

1. All our cameras record in "adaptive quality," capturing both standard (SQ) and high quality (HQ) streams. SQ video is stored up to the amount of retention specified by the customer. The amount of HQ video stored on the camera will depend on the amount of motion detected by the camera over time. To learn more, visit our website: <https://docs.verkada.com/docs/adaptive-quality-recording-whitepaper.pdf>

2. Lens Distortion Correction (LDC) crops the sensor field of view to deliver a rectified, undistorted output image.

3. Frame rate can be adjusted by support.

4. Extended temperature range includes operating temperatures below -8.5°C / 16.7°F and assumes IR will be enabled.



# CD42-E Tech Specs

## General

<b>Operating Temperature</b>	-40°C to 50°C / -40°F to 122°F	<b>LED Indicator</b>	System power and status indicator
<b>Humidity</b>	0 to 90%	<b>Warranty</b>	10 Years
<b>Certifications</b>	FCC, ICES, CE, UL, CB, NOM, IP67 weather rating, IK10 impact rating, KCC	<b>Included Accessories</b>	Setup guide, wall mount screws and anchors (4x), T10 security torx screwdriver, mounting template, cable gland wrench, desiccant pack, conduit adapter

## Mechanical

<b>Weight</b>	Camera: 847g / 29.88oz Mount plate: 174g / 6.14oz	<b>Body</b>	Aluminum, plastic dome trim
<b>Dimensions</b>	Ø: 155mm / 6.10in, H: 114.6mm / 4.51in with mount plate Ø: 155mm / 6.10in, H: 107.6mm / 4.24in without mount plate		

## Software capabilities

<b>Alerts</b>	Camera status, motion detection, people detection, vehicle detection, Person of Interest detection, crowd detection, line-crossing detection, loitering detection	<b>Streaming and Storage</b>	Cloud backup, configurable retention days, selectable storage location, low bandwidth mode, timelapse, RTSP
<b>People Analytics</b>	People search, attribute search, face search, Occupancy Trends, motion search, trajectory analysis, selective face blurring, AI-powered search <sup>5</sup>	<b>Sharing and Privacy</b>	Live Links, live face blur, privacy regions, audit log
<b>Vehicle Analytics</b>	Vehicle search, attribute search, motion search, trajectory analysis, Occupancy Trends, AI-powered search <sup>5</sup>		

5. AI-powered search is currently supported in English only.



## CD52-E Tech Specs

### Camera features

<b>Image Sensor</b>	1/2.8" Progressive CMOS	<b>Shutter Speed</b>	1/30 sec. to 1/10,000 sec.
<b>Sensor Resolution<sup>1</sup></b>	5MP (2688 x 1944)	<b>Day/Night</b>	IR-cut filter for day and night function
<b>Lens Type</b>	Varifocal; motorized zoom	<b>IR Cut Filter</b>	Yes
<b>Focal Length</b>	2.8-8mm	<b>IR Range</b>	30m / 98ft
<b>Aperture</b>	F1.3 - F2.4	<b>Minimum Illumination</b>	0.009 lux @ F1.9 (Color) 0 lux with IR Illuminators on
<b>Iris</b>	P-Iris	<b>Onboard Storage</b>	Capacity: From 256GB to 2TB Card: MicroSD, SDXC
<b>Field of View (after LDC<sup>2</sup>)</b>	Horizontal: 38° - 105° (37° - 84°) Vertical: 29° - 77° (28° - 68°) Diagonal: 48° - 126° (45° - 97°)	<b>CPU</b>	Ambarella CV25S88
<b>Sensor Movement</b>	Tilt: 60° Pan: 355° Rotation: 350°		

### Standard video settings

<b>Compression</b>	H.265, H.264	<b>Historical Video Settings</b>	Adaptive quality <sup>1</sup>
<b>Frame Rate<sup>3</sup></b>	24fps	<b>Live Streaming Settings</b>	High quality (HQ): Up to 3,000 Kbps (default) Standard quality (SQ): Up to 600 Kbps

### Standard audio settings

<b>Audio</b>	Supported	<b>Interface</b>	Built-in microphone
<b>Audio Capacity</b>	One-way audio	<b>Effective Range</b>	5m / 15ft

### Power and network

<b>Power Input<sup>4</sup></b>	With IR: IEEE 802.3af Type 1 PoE Without IR: IEEE 802.3af Type 1 PoE Extended temperature range: IEEE 802.3at Type 2 PoE+	<b>Connectivity</b>	RJ-45 cable connector for network/PoE connection; 10/100 Mbps
<b>Power Consumption<sup>4</sup></b>	With IR: 37-57V, 0.3-0.2A, 10.98W Without IR: 37-57V, 0.13-0.08A, 4.74W Extended temperature range: 37-57V, 0.43-0.28A, 16.03W	<b>RTSP</b>	RTSP 1.0 RFC 2326 Max concurrent streams: 2 Audio support: Yes

1. All our cameras record in "adaptive quality," capturing both standard (SQ) and high quality (HQ) streams. SQ video is stored up to the amount of retention specified by the customer. The amount of HQ video stored on the camera will depend on the amount of motion detected by the camera over time. To learn more, visit our website: <https://docs.verkada.com/docs/adaptive-quality-recording-whitepaper.pdf>

2. Lens Distortion Correction (LDC) crops the sensor field of view to deliver a rectified, undistorted output image.

3. Frame rate can be adjusted by support.

4. Extended temperature range includes operating temperatures below -8.5°C / 16.7°F and assumes IR will be enabled.



# CD52-E Tech Specs

## General

<b>Operating Temperature</b>	-40°C to 50°C / -40°F to 122°F	<b>LED Indicator</b>	System power and status indicator
<b>Humidity</b>	0 to 90%	<b>Warranty</b>	10 Years
<b>Certifications</b>	FCC, ICES, CE, UL, CB, NOM, KCC, IP67 weather rating, IK10 impact rating	<b>Included Accessories</b>	Setup guide, wall mount screws and anchors (4x), T10 security torx screwdriver, mounting template, cable gland wrench, desiccant pack, conduit adapter

## Mechanical

<b>Weight</b>	Camera: 1070g / 37.74oz Mount plate: 174g / 6.14oz	<b>Body</b>	Aluminum, plastic dome trim
<b>Dimensions</b>	Ø: 155mm / 6.10in, H: 114.6mm / 4.51in with mount plate Ø: 155mm / 6.10in, H: 107.6mm / 4.24in without mount plate		

## Software capabilities

<b>Alerts</b>	Camera status, motion detection, people detection, vehicle detection, Person of Interest detection, crowd detection, line-crossing detection, loitering detection	<b>Streaming and Storage</b>	Cloud backup, configurable retention days, selectable storage location, low bandwidth mode, timelapse, RTSP
<b>People Analytics</b>	People search, attribute search, face search, Occupancy Trends, motion search, trajectory analysis, selective face blurring, AI-powered search <sup>5</sup>	<b>Sharing and Privacy</b>	Live Links, live face blur, privacy regions, audit log
<b>Vehicle Analytics</b>	Vehicle search, attribute search, motion search, trajectory analysis, Occupancy Trends, AI-powered search <sup>5</sup>		

5. AI-powered search is currently supported in English only.



## CD62-E Tech Specs

### Camera features

<b>Image Sensor</b>	1/2.8" Progressive CMOS	<b>Shutter Speed</b>	1/30 sec. to 1/10,000 sec.
<b>Sensor Resolution<sup>1</sup></b>	4K (3840 x 2160)	<b>Day/Night</b>	IR-cut filter for day and night function
<b>Lens Type</b>	Varifocal; motorized zoom	<b>IR Cut Filter</b>	Yes
<b>Focal Length</b>	2.8-8mm	<b>IR Range</b>	30m / 98ft
<b>Aperture</b>	F1.3 - F2.4	<b>Minimum Illumination</b>	0.009 lux @ F1.9 (Color) 0 lux with IR Illuminators on
<b>Iris</b>	P-Iris	<b>Onboard Storage</b>	Capacity: From 512GB to 2TB Card: MicroSD, SDXC
<b>Field of View (after LDC<sup>2</sup>)</b>	Horizontal: 41° - 116° (40° - 100°) Vertical: 23° - 62° (23° - 57°) Diagonal: 47° - 136° (45° - 106°)	<b>CPU</b>	Ambarella CV22S66
<b>Sensor Movement</b>	Tilt: 60° Pan: 355° Rotation: 350°		

### Standard video settings

<b>Compression</b>	H.265, H.264	<b>Historical Video Settings</b>	Adaptive quality <sup>1</sup>
<b>Frame Rate<sup>3</sup></b>	24fps	<b>Live Streaming Settings</b>	High quality (HQ): Up to 4,500 Kbps (default) Standard quality (SQ): Up to 600 Kbps

### Standard audio settings

<b>Audio</b>	Supported	<b>Interface</b>	Built-in microphone
<b>Audio Capacity</b>	One-way audio	<b>Effective Range</b>	5m / 15ft

### Power and network

<b>Power Input<sup>4</sup></b>	With IR: IEEE 802.3af Type 1 PoE Without IR: IEEE 802.3af Type 1 PoE Extended temperature range: IEEE 802.3at Type 2 PoE+	<b>Connectivity</b>	RJ-45 cable connector for network/PoE connection; 10/100 Mbps
<b>Power Consumption<sup>4</sup></b>	With IR: 37-57V, 0.38-0.25A, 14.2W Without IR: 37-57V, 0.17-0.11A, 6.2W Extended temperature range: 37-57V, 0.53-0.34A, 19.51W	<b>RTSP</b>	RTSP 1.0 RFC 2326 Max concurrent streams: 2 Audio support: Yes

1. All our cameras record in "adaptive quality," capturing both standard (SQ) and high quality (HQ) streams. SQ video is stored up to the amount of retention specified by the customer. The amount of HQ video stored on the camera will depend on the amount of motion detected by the camera over time. To learn more, visit our website: <https://docs.verkada.com/docs/adaptive-quality-recording-whitepaper.pdf>

2. Lens Distortion Correction (LDC) crops the sensor field of view to deliver a rectified, undistorted output image.

3. Frame rate can be adjusted by support.

4. Extended temperature range includes operating temperatures below -8.5°C / 16.7°F and assumes IR will be enabled.



# CD62-E Tech Specs

## General

<b>Operating Temperature</b>	-40°C to 50°C / -40°F to 122°F	<b>LED Indicator</b>	System power and status indicator
<b>Humidity</b>	0 to 90%	<b>Warranty</b>	10 Years
<b>Certifications</b>	FCC, ICES, CE, UL, CB, IP67 weather rating, IK10 impact rating, IEC60950-1, KCC, BIS	<b>Included Accessories</b>	Setup guide, wall mount screws and anchors (4x), T10 security torx screwdriver, mounting template, cable gland wrench, desiccant pack, conduit adapter

## Mechanical

<b>Weight</b>	Camera: 994g / 35.06oz Mount plate: 174g / 6.14oz	<b>Body</b>	Aluminum, plastic dome trim
<b>Dimensions</b>	Ø: 155mm / 6.1in, H: 114.6mm / 4.51in with mount plate Ø: 155mm / 6.1in, H: 107.6mm / 4.24in without mount plate		

## Software capabilities

<b>Alerts</b>	Camera status, motion detection, people detection, vehicle detection, Person of Interest detection, crowd detection, line-crossing detection, loitering detection	<b>Streaming and Storage</b>	Cloud backup, configurable retention days, selectable storage location, low bandwidth mode, timelapse, RTSP
<b>People Analytics</b>	People search, attribute search, face search, Occupancy Trends, motion search, trajectory analysis, selective face blurring, AI-powered search <sup>5</sup>	<b>Sharing and Privacy</b>	Live Links, live face blur, privacy regions, audit log
<b>Vehicle Analytics</b>	Vehicle search, attribute search, motion search, trajectory analysis, Occupancy Trends, AI-powered search <sup>5</sup>		

5. AI-powered search is currently supported in English only.



## CD63-E Tech Specs

### Camera features

<b>Image Sensor</b>	1/1.2" Progressive CMOS	<b>Shutter Speed</b>	1/30 sec. to 1/10,000 sec.
<b>Sensor Resolution<sup>1</sup></b>	4K (3840 x 2160)	<b>Day/Night</b>	IR-cut filter for day and night function
<b>Lens Type</b>	Varifocal; motorized zoom	<b>IR Cut Filter</b>	Yes
<b>Focal Length</b>	5.9 - 13.3mm	<b>IR Range</b>	40m / 130ft
<b>Aperture</b>	F1.5 - F2.9	<b>Minimum Illumination</b>	0.009 lux @ F1.9 (Color) 0 lux with IR illuminators on
<b>Iris</b>	P-Iris	<b>Onboard Storage</b>	Capacity: From 512GB to 3TB Card: MicroSD, SDXC
<b>Field of View (after LDC<sup>2</sup>)</b>	Horizontal: 75° - 109° (72° - 102°) Vertical: 45° - 58° (44° - 58°) Diagonal: 82° - 113° (80° - 107°)	<b>CPU</b>	Ambarella CV72S66
<b>Sensor Movement</b>	Tilt: 65° Pan: 360° Rotation: 350°		

### Standard video settings

<b>Compression</b>	H.265, H.264	<b>Historical Video Settings</b>	Adaptive quality <sup>1</sup>
<b>Frame Rate<sup>3</sup></b>	24fps	<b>Live Streaming Settings</b>	High quality (HQ): Up to 4,500 Kbps (default) Standard quality (SQ): Up to 600 Kbps

### Standard audio settings

<b>Audio</b>	Supported	<b>Interface</b>	Built-in microphone
<b>Audio Capacity</b>	One-way audio	<b>Effective Range</b>	5m / 15ft

### Power and network

<b>Power Input<sup>4</sup></b>	With IR: PoE/IEEE 802.3at Type 2 PoE+ Extended temperature range: IEEE 802.3at Type 2 PoE+	<b>Connectivity</b>	RJ-45 cable connector for network/PoE connection; 10 / 100 / 1000 Mbps
<b>Power Consumption<sup>4</sup></b>	With IR: 42.5-57.0V, 0.48-0.36A, 20.4W Without IR: 42.5-57.0V, 0.27-0.20A, 11.3W Extended temperature range: 42.5-57.0V, 0.60-0.45A, 25.5W	<b>RTSP</b>	RTSP 1.0 RFC 2326 Max concurrent streams: 2 Audio support: Yes

1. All our cameras record in "adaptive quality," capturing both standard (SQ) and high quality (HQ) streams. SQ video is stored up to the amount of retention specified by the customer. The amount of HQ video stored on the camera will depend on the amount of motion detected by the camera over time. To learn more, visit our website: <https://docs.verkada.com/docs/adaptive-quality-recording-whitepaper.pdf>

2. Lens Distortion Correction (LDC) crops the sensor field of view to deliver a rectified, undistorted output image.

3. Frame rate can be adjusted by support.

4. Extended temperature range includes operating temperatures below -8.5°C / 16.7°F and assumes IR will be enabled.



# CD63-E Tech Specs

## General

<b>Operating Temperature</b>	-40°C to 50°C / -40°F to 122°F	<b>LED Indicator</b>	System power, status indicator, and debug indicator
<b>Humidity</b>	0 to 90%	<b>Warranty</b>	10 Years
<b>Certifications</b>	FCC, ICES, IK10 impact rating, IP66/IP67 weather rating	<b>Included Accessories</b>	Screw packs, mount plate with leveler, cable sealing rubber for 6.5-7.5mm, conduit adapter, T10 security driver, desiccant 4.5g

## Mechanical

<b>Weight</b>	Camera: 1386.0g / 48.9oz Mount plate: 193.0g / 6.8oz	<b>Body</b>	Aluminum, plastic dome trim
<b>Dimensions</b>	Ø: 155mm / 6.1in, H: 111.4mm / 4.4in with mount plate Ø: 155mm / 5.1in, H: 104.4mm / 4.1in without mount plate		

## Dimensions



## Software capabilities

<b>Alerts</b>	Camera status, motion detection, people detection, vehicle detection, Person of Interest detection, crowd detection, line-crossing detection, loitering detection, AI-powered alerts	<b>Streaming and Storage</b>	Cloud backup, configurable retention days, selectable storage location, low bandwidth mode, timelapse, RTSP
<b>People Analytics</b>	People search, attribute search, face search, Occupancy Trends, motion search, trajectory analysis, selective face blurring, AI-powered search	<b>Sharing and Privacy</b>	Live links, live face blur, privacy regions, audit log
<b>Vehicle Analytics</b>	Vehicle search, attribute search, motion search, trajectory analysis, Occupancy Trends, AI-powered search		



# Ordering Information

## Indoor Dome Series pricing<sup>2</sup>

Model Number	MP <sup>1</sup>	WDR	Lens	IR Range	Onboard Storage	Maximum SQ Onboard Retention <sup>1</sup>	People/ Vehicle Analytics	Cost (MSRP) <sup>USD</sup>
CD22-256-HW	3.0MP	✓	Fixed	10m / 33ft	256GB	30 Days	-	\$599
CD22-512-HW	3.0MP	✓	Fixed	10m / 33ft	512GB	60 Days	-	\$999
CD22-768-HW	3.0MP	✓	Fixed	10m / 33ft	768GB	90 Days	-	\$1,399
CD32-256-HW	3.0MP	✓	Fixed	15m / 49ft	256GB	30 Days	✓	\$799
CD32-512-HW	3.0MP	✓	Fixed	15m / 49ft	512GB	60 Days	✓	\$1,199
CD32-768-HW	3.0MP	✓	Fixed	15m / 49ft	768GB	90 Days	✓	\$1,599
CD42-256-HW	5.0MP	✓	Fixed	15m / 49ft	256GB	30 Days	✓	\$999
CD42-512-HW	5.0MP	✓	Fixed	15m / 49ft	512GB	60 Days	✓	\$1,399
CD42-768-HW	5.0MP	✓	Fixed	15m / 49ft	768GB	90 Days	✓	\$1,799
CD42-1TB-HW	5.0MP	✓	Fixed	15m / 49ft	1TB	120 Days	✓	\$2,199
CD42-2TB-HW	5.0MP	✓	Fixed	15m / 49ft	2TB	365 Days	✓	\$3,499
CD52-256-HW	5.0MP	✓	Zoom	30m / 98ft	256GB	30 Days	✓	\$1,199
CD52-512-HW	5.0MP	✓	Zoom	30m / 98ft	512GB	60 Days	✓	\$1,599
CD52-768-HW	5.0MP	✓	Zoom	30m / 98ft	768GB	90 Days	✓	\$1,999
CD52-1TB-HW	5.0MP	✓	Zoom	30m / 98ft	1TB	120 Days	✓	\$2,399
CD52-2TB-HW	5.0MP	✓	Zoom	30m / 98ft	2TB	365 Days	✓	\$3,699
CD62-30-HW	4K	✓	Zoom	30m / 98ft	512GB	30 Days	✓	\$1,499
CD62-60-HW	4K	✓	Zoom	30m / 98ft	1TB	60 Days	✓	\$2,399
CD62-90-HW	4K	✓	Zoom	30m / 98ft	2TB	90 Days	✓	\$3,299
CD63-512-HW	4K	✓	Zoom	40m / 130ft	512GB	30 days	✓	\$1,499
CD63-1TB-HW	4K	✓	Zoom	40m / 130ft	1TB	60 days	✓	\$2,299
CD63-2TB-HW	4K	✓	Zoom	40m / 130ft	2TB	90 days	✓	\$3,599
CD63-3TB-HW	4K	✓	Zoom	40m / 130ft	3TB	120 days	✓	\$4,899

1. All our cameras record in "adaptive quality," capturing both standard and high quality streams. Standard quality (SQ) video is stored up to the amount of retention specified by the customer. The amount of high quality video stored on the camera will depend on the amount of motion detected by the camera over time. To learn more, visit our website:

<https://docs.verkada.com/docs/adaptive-quality-recording-whitepaper.pdf>

2. The CD42 and CD52 are also available in FIPS-validated models. See <https://docs.verkada.com/docs/FIPS-validated-series.pdf> for details.



# Ordering Information

## Outdoor Dome Series pricing<sup>2</sup>

Model Number	MP <sup>1</sup>	WDR	Lens	IR Range	Onboard Storage	Maximum SQ Onboard Retention <sup>1</sup>	People/Vehicle Analytics	Cost (MSRP) <sup>USD</sup>
CD22-256E-HW	3.0MP	✓	Fixed	10m / 33ft	256GB	30 Days	-	\$799
CD22-512E-HW	3.0MP	✓	Fixed	10m / 33ft	512GB	60 Days	-	\$1,199
CD22-768E-HW	3.0MP	✓	Fixed	10m / 33ft	768GB	90 Days	-	\$1,599
CD32-256E-HW	3.0MP	✓	Fixed	15m / 49ft	256GB	30 Days	✓	\$999
CD32-512E-HW	3.0MP	✓	Fixed	15m / 49ft	512GB	60 Days	✓	\$1,399
CD32-768E-HW	3.0MP	✓	Fixed	15m / 49ft	768GB	90 Days	✓	\$1,799
CD42-256E-HW	5.0MP	✓	Fixed	15m / 49ft	256GB	30 Days	✓	\$1,199
CD42-512E-HW	5.0MP	✓	Fixed	15m / 49ft	512GB	60 Days	✓	\$1,599
CD42-768E-HW	5.0MP	✓	Fixed	15m / 49ft	768GB	90 Days	✓	\$1,999
CD42-1TBE-HW	5.0MP	✓	Fixed	15m / 49ft	1TB	120 Days	✓	\$2,399
CD42-2TBE-HW	5.0MP	✓	Fixed	15m / 49ft	2TB	365 Days	✓	\$3,699
CD52-256E-HW	5.0MP	✓	Zoom	30m / 98ft	256GB	30 Days	✓	\$1,399
CD52-512E-HW	5.0MP	✓	Zoom	30m / 98ft	512GB	60 Days	✓	\$1,799
CD52-768E-HW	5.0MP	✓	Zoom	30m / 98ft	768GB	90 Days	✓	\$2,199
CD52-1TBE-HW	5.0MP	✓	Zoom	30m / 98ft	1TB	120 Days	✓	\$2,599
CD52-2TBE-HW	5.0MP	✓	Zoom	30m / 98ft	2TB	365 Days	✓	\$3,899
CD62-30E-HW	4K	✓	Zoom	30m / 98ft	512GB	30 Days	✓	\$1,699
CD62-60E-HW	4K	✓	Zoom	30m / 98ft	1TB	60 Days	✓	\$2,599
CD62-90E-HW	4K	✓	Zoom	30m / 98ft	2TB	90 Days	✓	\$3,499
CD63-512E-HW	4K	✓	Zoom	40m / 130ft	512 GB	30 days	✓	\$1,699
CD63-1TBE-HW	4K	✓	Zoom	40m / 130ft	1TB	60 days	✓	\$2,499
CD63-2TBE-HW	4K	✓	Zoom	40m / 130ft	2TB	90 days	✓	\$3,799
CD63-3TBE-HW	4K	✓	Zoom	40m / 130ft	3TB	120 days	✓	\$5,099

1. All our cameras record in "adaptive quality," capturing both standard and high quality streams. Standard quality (SQ) video is stored up to the amount of retention specified by the customer. The amount of high quality video stored on the camera will depend on the amount of motion detected by the camera over time. To learn more, visit our website:

<https://docs.verkada.com/docs/adaptive-quality-recording-whitepaper.pdf>

2. The CD42-E and CD52-E are also available in FIPS-validated models. See <https://docs.verkada.com/docs/FIPS-validated-series.pdf> for details.



## Ordering Information

### Video Security Cloud License pricing

Model Number	Description	Cost (MSRP) USD
LIC-CAM-1Y	1-Year Camera License	\$199
LIC-CAM-3Y	3-Year Camera License	\$549
LIC-CAM-5Y	5-Year Camera License	\$899
LIC-CAM-10Y	10-Year Camera License	\$1,799

### Accessories pricing

ACC-MNT-ARM-1	Arm Mount	\$99
ACC-MNT-3	Wall Mounted L-Shaped Bracket Kit	\$129
ACC-MNT-7	Angle Mount Kit	\$149
ACC-MNT-8	Pendant Cap Mount	\$69
ACC-MNT-POLE-1	Pole Mount	\$209
ACC-MNT-CORNER-1	Corner Mount	\$199
ACC-MNT-XLARM-1	Large Arm Mount	\$159
ACC-CAM-SHIELD-1	Camera Weather Shield	\$79
INJ-POE-PLUS	PoE Plus (802.3at) Injector, GigE	\$129
ACC-MNT-CJBOX-1	Circle Junction Box	\$109
ACC-MNT-PEND-1	Pendant Cap Mount	\$69
ACC-MNT-UPEND-1	Umbrella Pendant Cap Mount	\$79
ACC-MNT-ANGLE-1	Angle Mount	\$149
ACC-MNT-LBRAC-1	L-Bracket Mount	\$129
ACC-MNT-REC-2	Recessed Ceiling Mount	\$149



# Ordering Information

## Viewing Station pricing

Model Number	Description	Cost (MSRP) USD
VX52-HW	VX52 Viewing Station	\$499
LIC-VX-1Y	1-Year Viewing Station License	\$499
LIC-VX-3Y	3-Year Viewing Station License	\$1,299
LIC-VX-5Y	5-Year Viewing Station License	\$1,999
LIC-VX-10Y	10-Year Viewing Station License	\$3,999