

**ThinkPad** X395

# Setup Guide

Guide de configuration

Einrichtungsanleitung

Guida di configurazione

Installatiegids

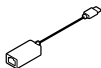
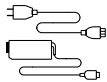
Manual de Configuração

**Lenovo**

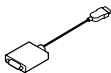
# Unpack

---

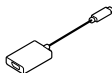
XXXXXXXXXX | XXXXXXXXXXXX | XXXXXXXXXXXX | XXXXXXXXXXXX | XXXXXXXXXXXXX  
| XXXXXXXXXXXXX



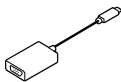
\* ThinkPad Ethernet Extension Adapter Gen 2



\* Lenovo HDMI to VGA Adapter



\* Lenovo USB-C to DisplayPort Adapter



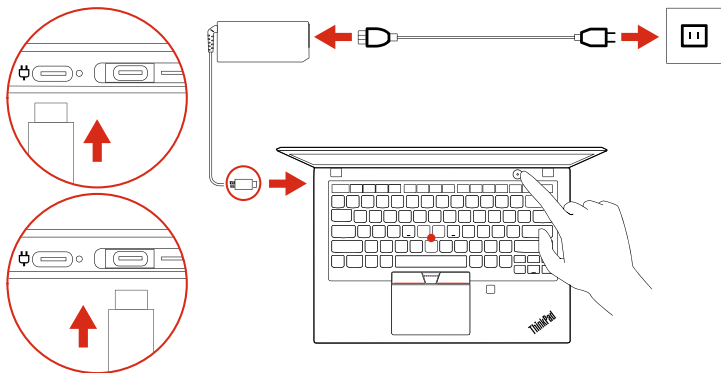
\* Lenovo USB-C to VGA Adapter

\* For selected models | 某些型号配备 | 選配 | 一部のモデルで

# Initial Setup

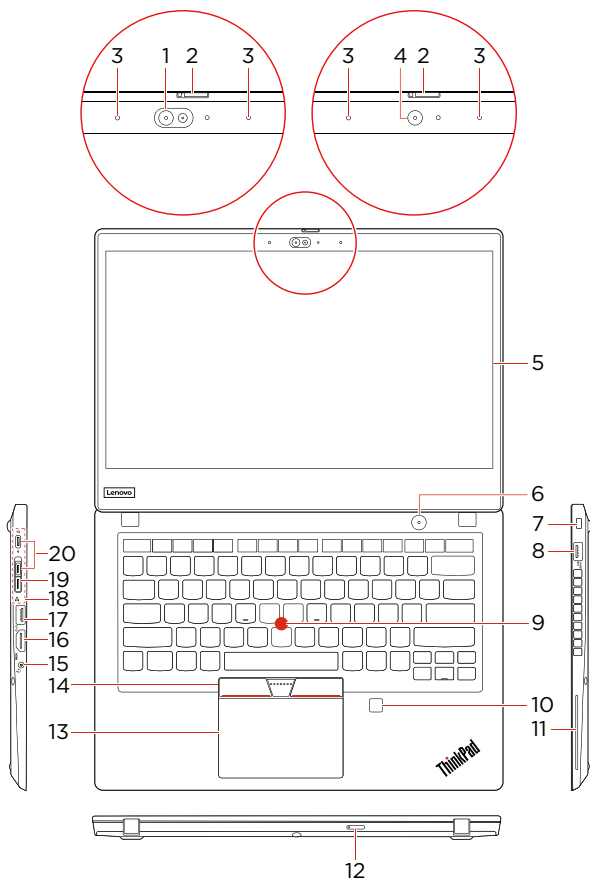
---

Configuration iniziale | Ersteinrichtung | Configurazione iniziale |  
Eerste installatie | Configuração inicial



# Overview

Présentation | Überblick | Panorama | Overzicht |  
Descrição geral



- \* 1. Infrared camera
- \* 2. ThinkShutter
- \* 3. Microphones
- \* 4. Camera
- \* 5. Multi-touch screen
- 6. Power button
- 7. Security-lock slot
- 8. Always On USB 3.1 connector Gen 1
- 9. TrackPoint pointing stick
- \* 10. Fingerprint reader
- \* 11. Smart card slot
- 12. Nano-SIM-card and microSD-card slot
- 13. Trackpad
- 14. TrackPoint® buttons
- 15. Audio connector
- 16. HDMI™ connector
- 17. USB 3.1 connector Gen 2
- 18. Docking station connector
- 19. Ethernet extension connector Gen 2
- 20. USB-C™ connector (USB 3.1 Gen 2)

\* For selected models

**i** Read the statement on USB transfer rate in the *User Guide*. Refer to the *Safety and Warranty Guide* for accessing the *User Guide*.

- \* 1. Infrared camera
- \* 2. ThinkShutter
- \* 3. Microphones
- \* 4. Camera
- \* 5. Multi-touch screen
- 6. Power button
- 7. Security-lock slot
- 8. Always On USB 3.1 connector Gen 1
- 9. TrackPoint pointing stick
- \* 10. Fingerprint reader
- \* 11. Smart card slot
- 12. Nano-SIM-card and microSD-card slot
- 13. Trackpad
- 14. TrackPoint® buttons
- 15. Audio connector
- 16. HDMI™ connector
- 17. USB 3.1 connector Gen 2
- 18. Docking station connector
- 19. Ethernet extension connector Gen 2
- 20. USB-C™ connector (USB 3.1 Gen 2)

\* For selected models

**i** Read the statement on USB transfer rate in the *User Guide*. Refer to the *Safety and Warranty Guide* for accessing the *User Guide*.

- \* 1. Infrared camera
- \* 2. ThinkShutter
- \* 3. Microphones
- \* 4. Camera
- \* 5. Multi-touch screen
- 6. Power button
- 7. Security-lock slot
- 8. Always On USB 3.1 connector Gen 1
- 9. TrackPoint pointing stick
- \* 10. Fingerprint reader
- \* 11. Smart card slot
- 12. Nano-SIM-card and microSD-card slot
- 13. Trackpad
- 14. TrackPoint® buttons
- 15. Audio connector
- 16. HDMI™ connector
- 17. USB 3.1 connector Gen 2
- 18. Docking station connector
- 19. Ethernet extension connector Gen 2
- 20. USB-C™ connector (USB 3.1 Gen 2)

\* For selected models

**i** Read the statement on USB transfer rate in the *User Guide*. Refer to the *Safety and Warranty Guide* for accessing the *User Guide*.

- \* 1. Infrared camera
- \* 2. ThinkShutter
- \* 3. Microphones
- \* 4. Camera
- \* 5. Multi-touch screen
- 6. Power button
- 7. Security-lock slot
- 8. Always On USB 3.1 connector Gen 1
- 9. TrackPoint pointing stick
- \* 10. Fingerprint reader
- \* 11. Smart card slot
- 12. Nano-SIM-card and microSD-card slot
- 13. Trackpad
- 14. TrackPoint® buttons
- 15. Audio connector
- 16. HDMI™ connector
- 17. USB 3.1 connector Gen 2
- 18. Docking station connector
- 19. Ethernet extension connector Gen 2
- 20. USB-C™ connector (USB 3.1 Gen 2)

\* For selected models

**i** Read the statement on USB transfer rate in the *User Guide*. Refer to the *Safety and Warranty Guide* for accessing the *User Guide*.

- \* 1. Infrared camera
- \* 2. ThinkShutter
- \* 3. Microphones
- \* 4. Camera
- \* 5. Multi-touch screen
- 6. Power button
- 7. Security-lock slot
- 8. Always On USB 3.1 connector Gen 1
- 9. TrackPoint pointing stick
- \* 10. Fingerprint reader
- \* 11. Smart card slot
- 12. Nano-SIM-card and microSD-card slot
- 13. Trackpad
- 14. TrackPoint® buttons
- 15. Audio connector
- 16. HDMI™ connector
- 17. USB 3.1 connector Gen 2
- 18. Docking station connector
- 19. Ethernet extension connector Gen 2
- 20. USB-C™ connector (USB 3.1 Gen 2)

\* For selected models

**i** Read the statement on USB transfer rate in the *User Guide*. Refer to the *Safety and Warranty Guide* for accessing the *User Guide*.

- \* 1. Infrared camera
- \* 2. ThinkShutter
- \* 3. Microphones
- \* 4. Camera
- \* 5. Multi-touch screen
- 6. Power button
- 7. Security-lock slot
- 8. Always On USB 3.1 connector Gen 1
- 9. TrackPoint pointing stick
- \* 10. Fingerprint reader
- \* 11. Smart card slot
- 12. Nano-SIM-card and microSD-card slot
- 13. Trackpad
- 14. TrackPoint® buttons
- 15. Audio connector
- 16. HDMI™ connector
- 17. USB 3.1 connector Gen 2
- 18. Docking station connector
- 19. Ethernet extension connector Gen 2
- 20. USB-C™ connector (USB 3.1 Gen 2)

\* For selected models

**i** Read the statement on USB transfer rate in the *User Guide*. Refer to the *Safety and Warranty Guide* for accessing the *User Guide*.

# Additional information

XXXXXXXX | XXXXXXXX | XXXXXX | XXXXXXXXXXXX | XXXXXXXXXXXX

## European Union – compliance with the Radio Equipment Directive

Hereby, Lenovo (Singapore) Pte. Ltd., declares that the radio equipment type ThinkPad X395 is in compliance with Directive 2014/53/EU.

The full text of the system EU declaration of conformity and the EU wireless module declarations are available at the following Internet addresses:

- For notebook computers:  
<https://www.lenovo.com/eu-doc-notebooks>
- For tablets:  
<https://www.lenovo.com/eu-doc-tablets>

This radio equipment operates with the following frequency bands and maximum radio-frequency power:

Technology	Frequency band [MHz]	Maximum transmit power
WLAN 802.11b/g/n	2400 - 2483.5	< 20 dBm
WLAN 802.11a/n/ac	5150 - 5725	< 23 dBm
WLAN 802.11a/n/ac	5725 - 5875	< 13.98 dBm
WWAN UMTS	1/8	< 24.5 dBm
WWAN LTE	1/3/7/8/20/28	< 24 dBm
Bluetooth BR/EDR/LE	2400 - 2483.5	< 20 dBm

## Conformité aux directives de l'Union européenne

Modèles avec périphérique radio :

Conformité à la directive concernant l'équipement radio

Ce produit est conforme à la Directive 2014/53/EU. Le tableau ci-dessous indique les bandes de fréquence et la fréquence radio maximale de cet équipement radio.

Technology	Frequency band [MHz]	Maximum transmit power
WLAN 802.11b/g/n	2400 - 2483.5	< 20 dBm
WLAN 802.11a/n/ac	5150 - 5725	< 23 dBm
WLAN 802.11a/n/ac	5725 - 5875	< 13.98 dBm
WWAN UMTS	1/8	< 24.5 dBm
WWAN LTE	1/3/7/8/20/28	< 24 dBm
Bluetooth BR/EDR/LE	2400 - 2483.5	< 20 dBm

## EU-Konformitätserklärung

Richtlinie zur elektromagnetischen Verträglichkeit:

Dieses Produkt entspricht den Schutzanforderungen der EU-Richtlinie 2014/30/EU zur Harmonisierung der Rechtsvorschriften der Mitgliedstaaten über die elektromagnetische Verträglichkeit. Die vollständige Konformitätserklärung befindet sich im *Benutzerhandbuch*. Weitere Informationen finden Sie im Abschnitt „Zugriff auf das *Benutzerhandbuch*“ in diesem Dokument.

Modelle mit Funkgerät:

Erfüllung der Funkanlagen-Richtlinie

Dieses Produkt entspricht der Richtlinie 2014/53/EU. Die folgende Tabelle zeigt die Frequenzbänder und maximale HF-Leistung dieses Funkgeräts.

Technology	Frequency band [MHz]	Maximum transmit power
WLAN 802.11b/g/n	2400 - 2483.5	< 20 dBm
WLAN 802.11a/n/ac	5150 - 5725	< 23 dBm
WLAN 802.11a/n/ac	5725 - 5875	< 13.98 dBm
WWAN UMTS	1/8	< 24.5 dBm
WWAN LTE	1/3/7/8/20/28	< 24 dBm
Bluetooth BR/EDR/LE	2400 - 2483.5	< 20 dBm

## Conformità per l'Unione Europea

Conformità alla direttiva sulla compatibilità elettromagnetica (EMC):

Questo prodotto è conforme ai requisiti di protezione della Direttiva del Consiglio dell'Unione Europea 2014/30/UE sulle norme degli Stati Membri relative alla compatibilità elettromagnetica. La dichiarazione di conformità completa è contenuta nella *guida per l'utente*. Per ulteriori informazioni, consultare la sezione "Accesso alla *guida per l'utente*" in questo documento.

Modelli con dispositivo radio:

Conformità alla direttiva sulle apparecchiature radio

Questo prodotto è conforme alla direttiva 2014/53/UE. Nella tabella seguente sono riportate bande di frequenza e alimentazione a radiofrequenza massima di questa apparecchiatura radio.

Technology	Frequency band [MHz]	Maximum transmit power
WLAN 802.11b/g/n	2400 - 2483.5	< 20 dBm
WLAN 802.11a/n/ac	5150 - 5725	< 23 dBm
WLAN 802.11a/n/ac	5725 - 5875	< 13.98 dBm
WWAN UMTS	1/8	< 24.5 dBm
WWAN LTE	1/3/7/8/20/28	< 24 dBm
Bluetooth BR/EDR/LE	2400 - 2483.5	< 20 dBm

## EU-conformiteit

Verklaring over EMC-richtlijn:

Dit product voldoet aan de voorwaarden voor bescherming zoals opgenomen in EU-richtlijn 2014/30/EU van de Europese Commissie inzake de harmonisering van de wetgeving van Lidstaten met betrekking tot elektromagnetische compatibiliteit. De volledige conformiteitsverklaring bevindt zich in de *Gebruikershandleiding*. Raadpleeg 'De gebruikershandleiding openen' in dit document voor aanvullende informatie.

Modellen met een radiografisch toestel:

Naleving van de richtlijn voor radioapparatuur

Dit product voldoet aan richtlijn 2014/53/EU. De onderstaande tabel bevat de frequentiebanden en het maximale radiofrequentievermogen van deze radioapparatuur.

Technology	Frequency band [MHz]	Maximum transmit power
WLAN 802.11b/g/n	2400 - 2483.5	< 20 dBm
WLAN 802.11a/n/ac	5150 - 5725	< 23 dBm
WLAN 802.11a/n/ac	5725 - 5875	< 13.98 dBm

Technology	Frequency band [MHz]	Maximum transmit power
WWAN UMTS	1/8	< 24.5 dBm
WWAN LTE	1/3/7/8/20/28	< 24 dBm
Bluetooth BR/EDR/LE	2400 - 2483.5	< 20 dBm

## Conformidade com os regulamentos da União Europeia

Declaração de conformidade com a Diretiva EMC:

Este produto está em conformidade com os requisitos de proteção estabelecidos na Diretiva 2014/30/UE do Conselho Europeu sobre a uniformização das leis dos Estados Membros relativas à compatibilidade eletromagnética. A declaração de conformidade completa pode ser encontrada no *Manual do Utilizador*. Para obter informações adicionais, consulte a secção "Aceder ao *Manual do Utilizador*" neste documento.

Modelos com um dispositivo de rádio:

Conformidade com a Diretiva de Equipamento de Rádio

Este produto está em conformidade com a Diretiva 2014/53/UE. A tabela abaixo apresenta as bandas de frequência e potência de radiofrequência máxima deste equipamento de rádio.

Technology	Frequency band [MHz]	Maximum transmit power
WLAN 802.11b/g/n	2400 - 2483.5	< 20 dBm
WLAN 802.11a/n/ac	5150 - 5725	< 23 dBm
WLAN 802.11a/n/ac	5725 - 5875	< 13.98 dBm
WWAN UMTS	1/8	< 24.5 dBm
WWAN LTE	1/3/7/8/20/28	< 24 dBm
Bluetooth BR/EDR/LE	2400 - 2483.5	< 20 dBm



# E-manual

---

Manuel en ligne | E-Handbuch | Manuale elettronico | E-handleiding  
| Manual electrónico



---

**First Edition (May 2019)**

**© Copyright Lenovo 2019.**

LIMITED AND RESTRICTED RIGHTS NOTICE: If data or software is delivered pursuant to a General Services Administration "GSA" contract, use, reproduction, or disclosure is subject to restrictions set forth in Contract No. GS-35F-05925.

**Reduce | Reuse | Recycle**



For Barcode Position Only

Printed in China  
PN: xxxxxxxxxx