

Manual
SpaceMouse® Wireless
Bluetooth® Edition



Driver Version: 3DxWare 10.8.17 and higher

Table of Content

QuickStart Guide	3
Desktop Setup	3
Hand Position	3
Installation	3
Feature Guide.....	4
3Dconnexion SpaceMouse Wireless	4
3Dconnexion Settings.....	6
Advanced Settings	7
Application Specific Advanced Settings.....	7
Buttons	9
Assigning Quick Macros to buttons	9
Assigning Commands using the flyout window	10
Creating Macros and Radial Menus	10
3Dconnexion Home	13
Technical Specifications.....	14
Safety, Compliance and Warranty Information	15

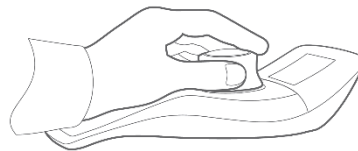
QuickStart Guide

Desktop Setup



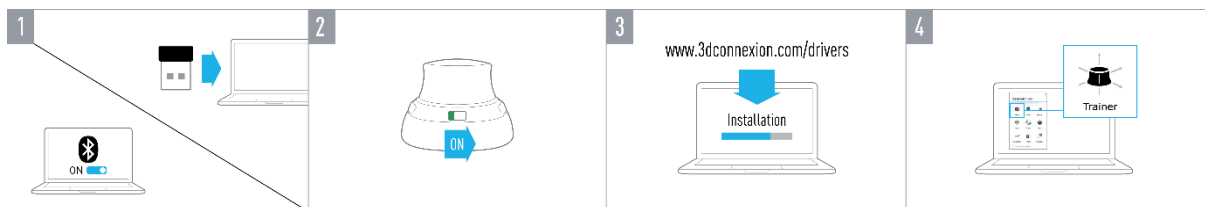
Place the SpaceMouse Wireless on the opposite side of the keyboard to your standard mouse. One hand engages the 3D mouse to position your model: rotating, panning and zooming. The other hand uses the standard mouse to select, create and edit.

Hand Position



Position your hand as shown. The contoured controller cap will guide your fingers into the perfect position for precise and effortless control.

Installation



1. Connect USB Receiver

Connect the included 3Dconnexion Universal Receiver to your computer.

2. Turn on the SpaceMouse Wireless

Turn on the power switch located on the back of your SpaceMouse Wireless.

3. Download and install the latest 3Dconnexion software

Make sure you have the latest 3Dconnexion software (3DxWare) installed. The latest version can be downloaded at 3dconnexion.com/drivers.

4. Learn how to use your SpaceMouse Wireless

Open 3Dconnexion Home and launch the Trainer to get help taking the first steps with your SpaceMouse Wireless.

Feature Guide

3Dconnexion SpaceMouse Wireless Bluetooth Edition

ON/OFF Switch

3Dconnexion Buttons

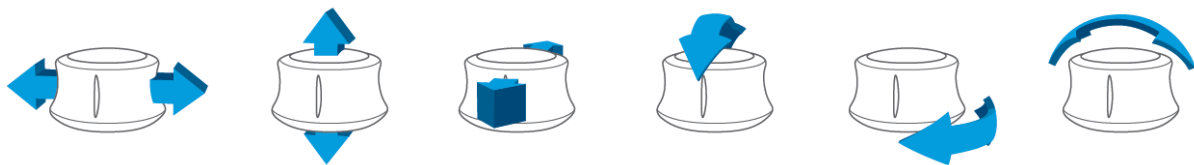


Controller Cap

Status LED

Controller Cap

The Controller Cap is the heart of your SpaceMouse Wireless. Its Six-Degrees-of-Freedom (6DoF) sensor allows you to push, pull, rotate, or tilt to pan, zoom and rotate your drawings and 3D models. The SpaceMouse has different motion profiles depending on the application you are using. In **Object Mode** applications the 3D navigation behaves as if you were reaching into the screen and holding the object in your own hand. In **Fly Mode** applications, the navigation behaves like a flying camera you are viewing through. For many applications, you can adjust this behaviour in the **Advanced Settings** of your SpaceMouse Wireless.



3Dconnexion Buttons

The SpaceMouse Wireless features two additional programmable function buttons, located on its socket. It instantly recognizes the applications you are using, as well as their environments, and automatically assigns the most used commands to the buttons. You can personalize commands assigned to the function buttons using the **3Dconnexion Settings**.

Connect your SpaceMouse Wireless



The SpaceMouse Wireless can be connected via the included 3Dconnexion Universal Receiver, the 3Dconnexion Keyboard Pro, Bluetooth, or USB cable.

Note: Since your SpaceMouse Wireless is factory paired with the Universal Receiver, you must first remove the Universal Receiver from your computer, before you can pair it with the Keyboard Pro.

Pairing via Bluetooth:

Switch on your device and make sure it starts blinking blue. Now open the Bluetooth settings on your PC, make sure Bluetooth is activated, click on "Add device", select "Bluetooth", and select the SpaceMouse device from the list.

Pairing via the 3Dconnexion Keyboard Pro:

Access the Windows start menu and launch the **3Dconnexion Pairing** tool. Now press **Add device** and follow the instructions of the **3Dconnexion Pairing** tool to connect your SpaceMouse Wireless with your Keyboard Pro.

Charge your SpaceMouse Wireless

When the status LED of your SpaceMouse Wireless turns red, it has less than 10% battery power left and should be charged. Connect your SpaceMouse Wireless to a charging port of your computer by using the included USB cable. As long as the SpaceMouse Wireless is charging, the status LED will pulse green, and it will turn solid green when it is fully charged.

Status LED

The SpaceMouse Wireless features a status LED that shows the battery status as well as the connection status.

▪ Battery status:

Immediately after turning on the device or after wake-up from sleep, the LED will show the current charge level:

- **Green** The SpaceMouse Wireless is sufficiently charged.
- **Red** The SpaceMouse Wireless has less than 10% charge and requires charging.

▪ Pairing and connection status:

After the battery status is displayed, the device will show the current connection and pairing mode.

- White (steady) Successfully connected in 3Dconnexion wireless mode.
- White (pulsing) Ready for 3Dconnexion wireless connection.
- **Blue** (steady) Successfully connected in Bluetooth mode.
- **Blue** (pulsing) Ready for Bluetooth connection.

After the device has been successfully connected, the LED turns off.

LED ring

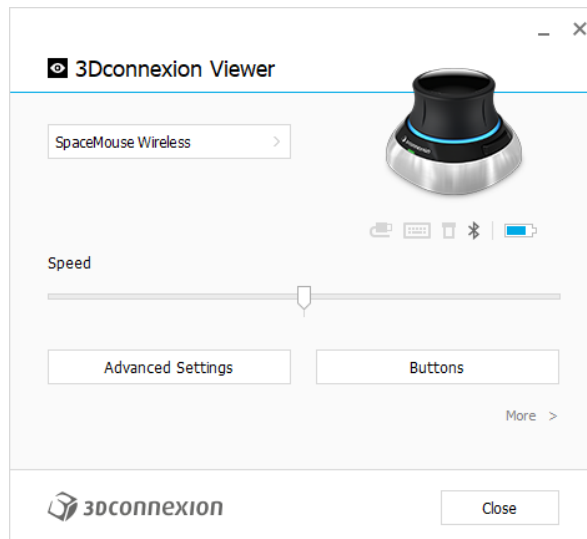
The LED ring on the SpaceMouse Wireless gives you additional information on the connection status.

- **Lighting up followed by dim off** The SpaceMouse Wireless is successfully paired

3Dconnexion Settings

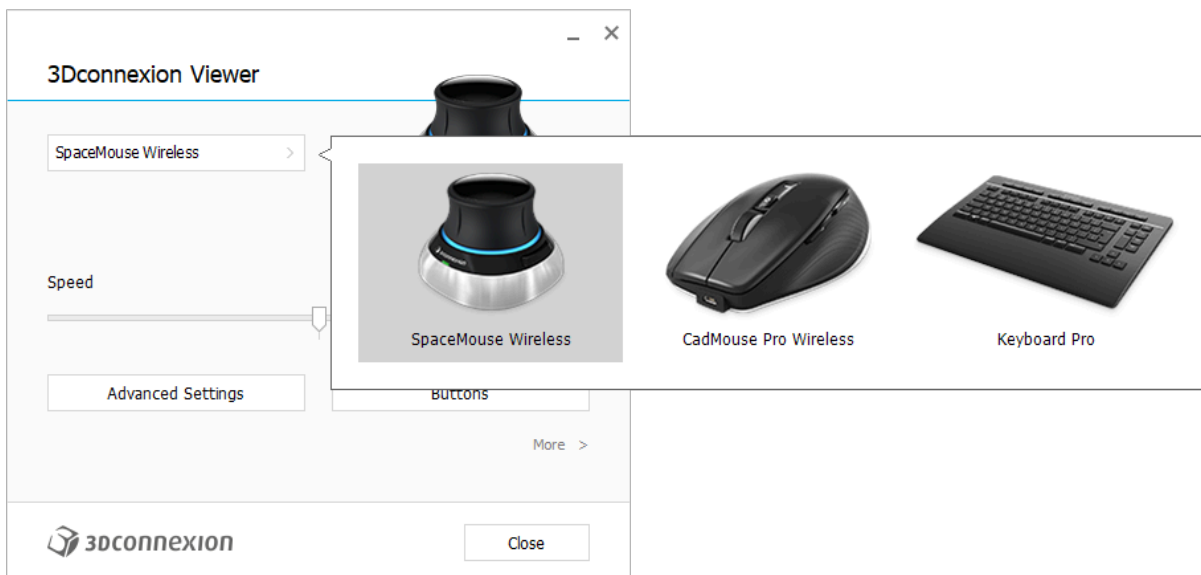


You can access the **3Dconnexion Settings** panel via 3Dconnexion Home (on your desktop), the icon in your notification area (systray), or the Windows start menu. The name of the active application is displayed at the top of the panel. Any setting change is relevant to this application only. The current connection mode, as well as the battery level are displayed by the icons below the product image.



Speed

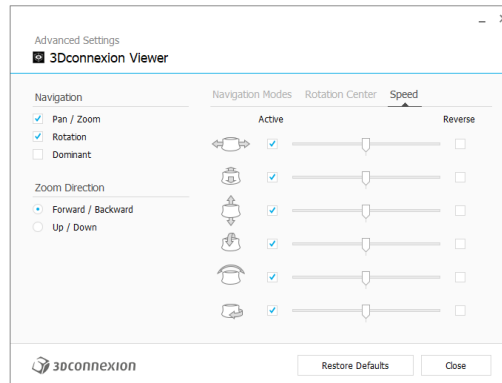
This slider sets the overall speed for your device. In other words, it changes the amount of force or torque that needs to be applied to the SpaceMouse cap to move an object, scene, or image.



If multiple 3Dconnexion devices are connected, you can select the desired product to configure by clicking on the flyout button at the top left of the panel.

Advanced Settings

Settings you can configure in the **Advanced Settings** panel are application-specific. So, it's easy to configure your SpaceMouse Wireless to work just how you prefer in each application.



Navigation

Pan / Zoom: Enables/disables panning of your part, assembly or drawing. Enabled by default.

Rotation: Enables/disables rotation of your part, assembly or drawing. Enabled by default.

Dominant: Turns on and off dominant filter axis, which when enabled restricts the pan, zoom or, rotations to a single axis.

Zoom Direction

Forward / Backward: Zoom by pushing the cap toward or away from you parallel to the desk.

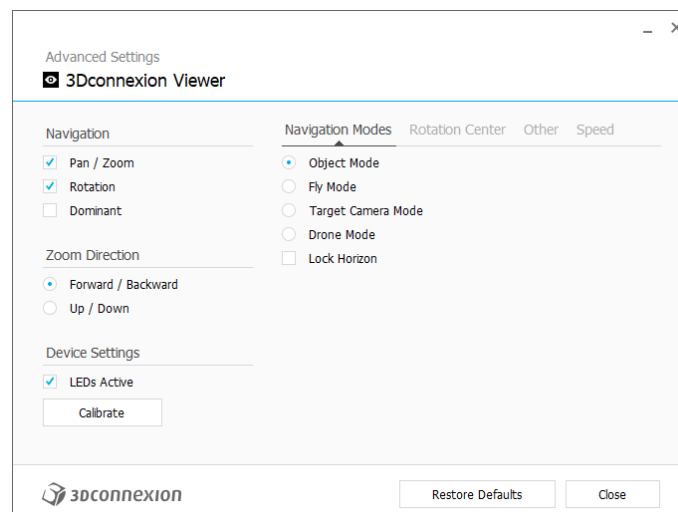
Up / Down: Zoom by pulling the cap upwards or pushing the cap downwards parallel to the screen.

Speed

Use the slider to set the speed for each of the 6-Dimensions-of-Freedom individually. To reverse the direction of a movement, check the **Reverse** box for that movement.

Application Specific Advanced Settings

Some applications feature additional SpaceMouse settings. For those applications you have additional options available in the **Advanced Settings Panel**:



Navigation Modes

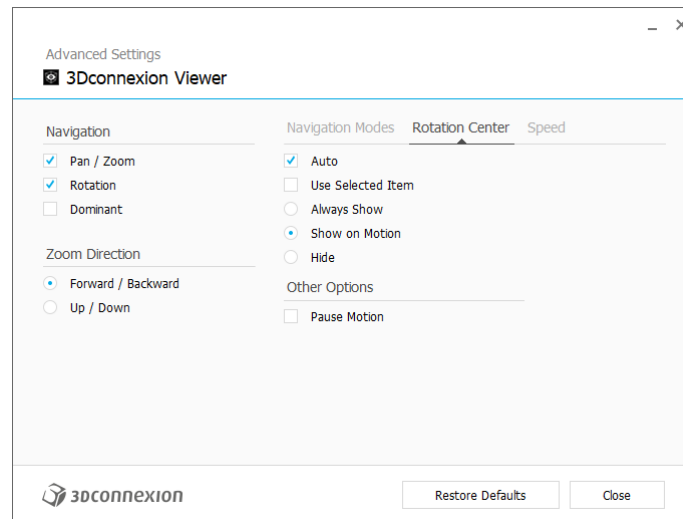
Object Mode enables **Object Mode** navigation - this mode is like reaching into the screen and holding the model in your hand. Push the SpaceMouse cap left, and the model moves left. Push right and the model moves right.

Fly Mode enables using the Controller Cap as if it is a flying camera. Push into the scene and the camera flies forward into the scene. Push left and the camera flies to the left (the scene moves to the right). Lift up and the camera flies up (the scene moves down). You are entering the scene as if flying around in it.

Target Camera Mode enables **Target Camera Mode** navigation. Manipulate the SpaceMouse cap as if it is a target camera. Push into the scene and the camera moves forward into the scene. Push left and the camera moves to the left (the scene moves to the right). Lift up and the camera moves up (the scene moves down). When rotating the cap in any direction you will orbit around the target point (see **Rotation Center** below).

Drone Mode enables a **Fly Mode** navigation but pushing the cap forward while looking down will not change the altitude of the camera.

Lock Horizon forces the horizon to be kept leveled as it currently is.



Rotation Center

Auto sets the center of rotation dynamically. When the complete model is in view, the center of volume of the whole model is used as the rotation point. When you move closer, the center of rotation will be set on an object close to your center of the view.

Use selected Item forces the rotation center to only take the currently selected objects into account.

Always Show always visualizes the Rotation Center.

Show on Motion will visualize the Rotation Center only during movement.

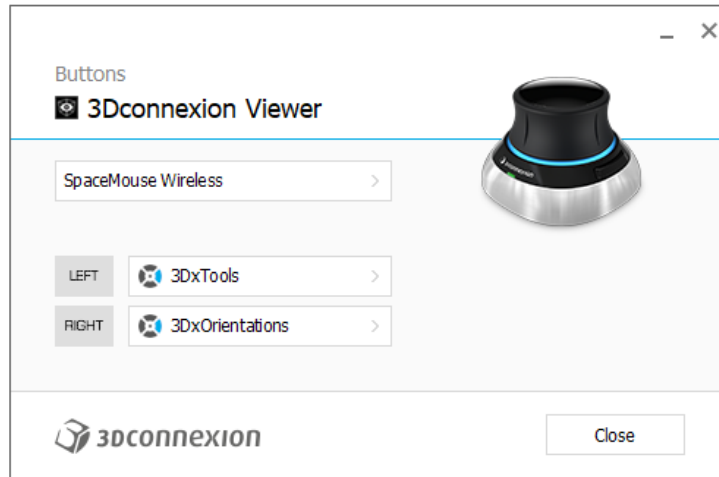
Hide will disable the Rotation Center visualization.

Other Options

The applications below feature special options. More information can be found in the [3Dconnexion FAQ](#):
Autodesk 3ds Max, Autodesk Maya, Autodesk Revit, Cinema 4D, Solid Edge, SOLIDWORKS, Unity, Unreal Engine

Buttons

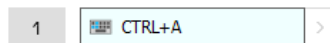
The **Buttons** panel within **3Dconnexion Settings** allows you to assign commands, macros or, radial menus. The name of the active application is displayed at the top of the panel. Any setting change is relevant to this application only.



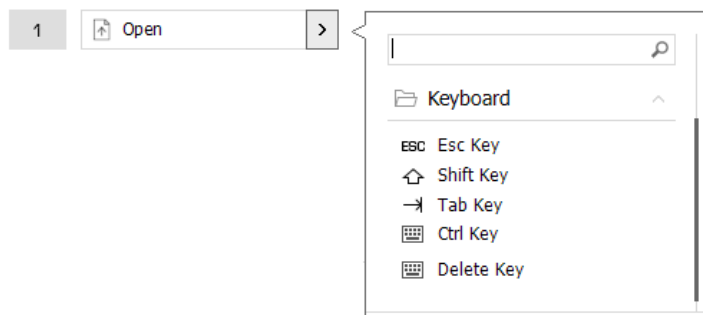
A note about Environment sensitivity: Some applications feature environment sensitive key mapping. In those applications, you can have different key assignments depending on the currently active environment.

Assigning Quick Macros to buttons

Click on the text in the input field and press the required key or key combination to quickly assign a keystroke or macro.



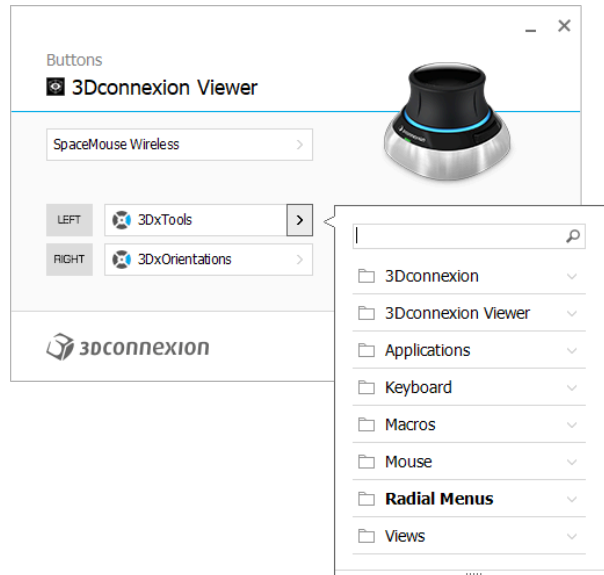
When a macro is created, it always sends a **press and release** command. If you want to assign a **press and hold** command instead (for example Ctrl or Shift), you should use the **Keyboard** command category in the flyout window.



Assigning Commands using the flyout window

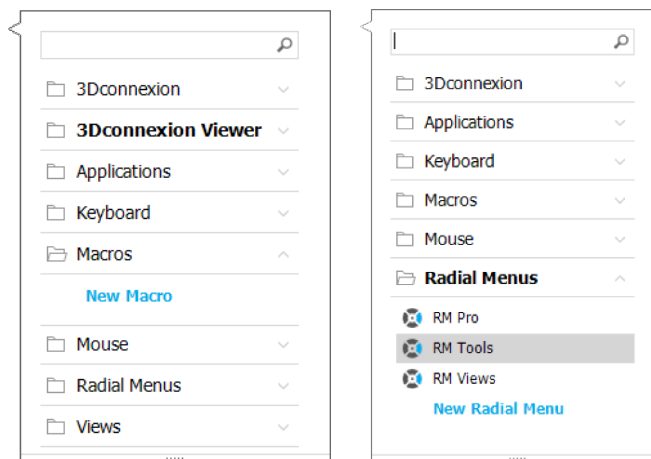
Clicking on the > arrow on the right-hand side of the button field opens a flyout window for that SpaceMouse button:

The flyout window allows you to browse or search for commands in different categories. When you select a command by clicking on it, it is automatically assigned to the corresponding SpaceMouse button. The category of the command that it is currently assigned to is highlighted in bold.



Creating Macros and Radial Menus

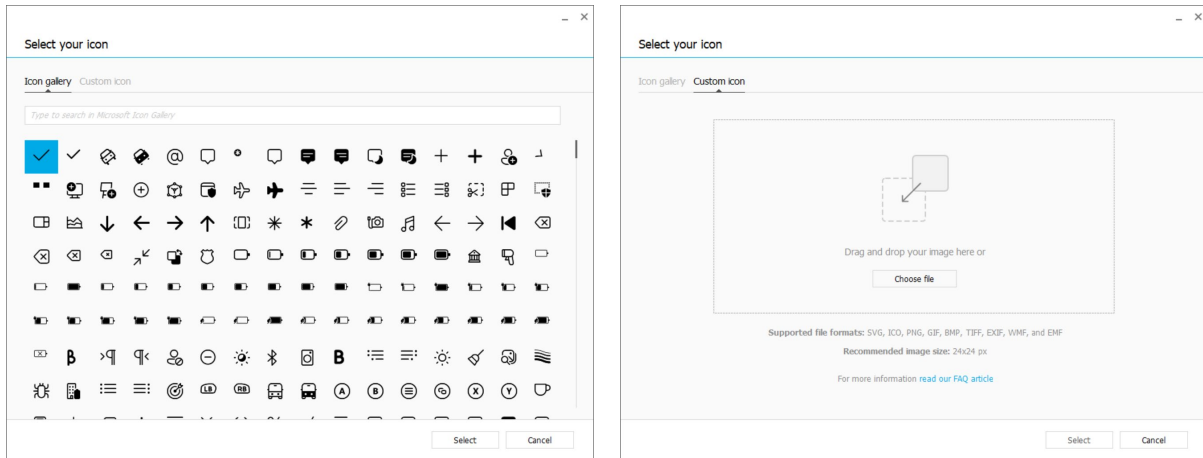
To create a new macro or radial menu, first click on the > arrow on the right of the key field, then expand the **Macro/Radial Menu** category and click on **New Macro/New Radial Menu**.



Assigning icons to Macros and Radial Menus

In a first step you are asked to give your macro or radial menu a name and assign an icon to it.

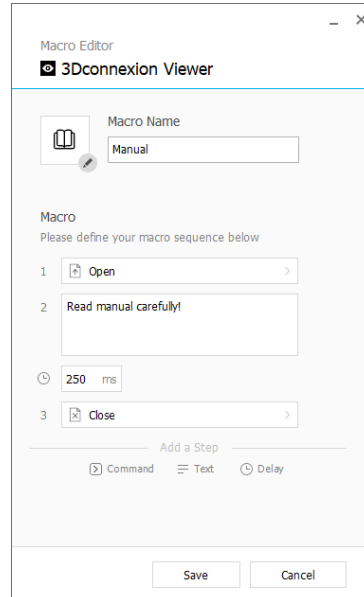
You can choose to use one of the icons already provided in the icon gallery tab or upload your own icon in the custom icon tab.



Note: The image must not be larger than 500x500px and must be in one of the following file formats: SVG, ICO, PNG, GIF, BMP, TIFF, EXIF, WMF, and EMF. For an optimal rendering result, we recommend an image in 24x24px with a transparent background.

Creating Macros

As a second step, when creating a new macro, you have the option to edit your macro sequence by adding steps to it.

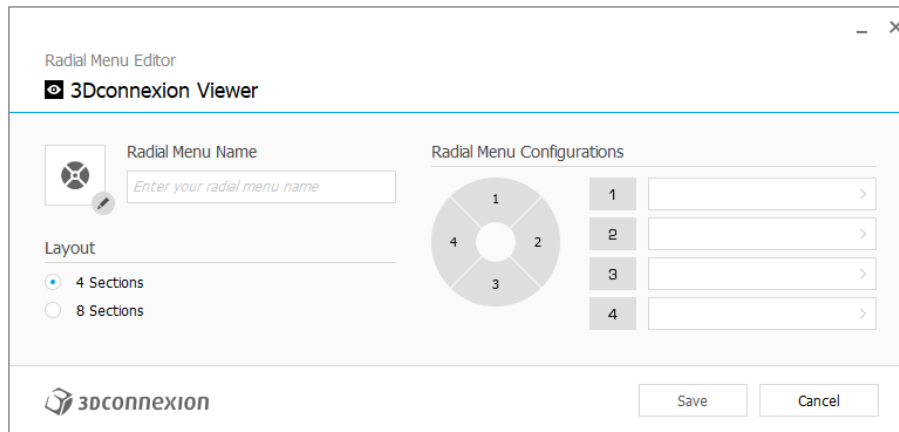


Within this sequence you can assign keyboard shortcuts to a "Command" step as well as use the flyout window to assign application commands to it. "Text" steps allow you to add text blocks to your macro. "Delay" steps allow you to compensate for longer loading times of your application.

The sequence of your macro is editable by dragging the single steps into the right order or deleting steps that are not needed. When you are done editing your macro, click save to automatically assign the new macro to the button from where you opened the panel.

Creating Radial Menus

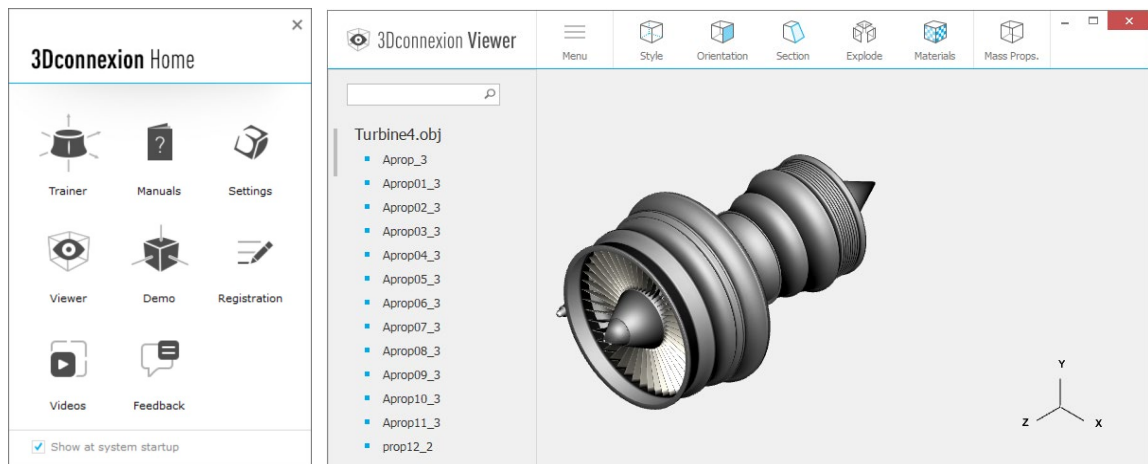
When creating a new radial menu as a second step you have the option to choose between a four and an eight-section layout. Assign commands or macros to the different sections and save your radial menu. Your new radial menu will be automatically assigned to the button from where you opened the panel.



3Dconnexion Home



Once you have successfully installed the latest 3Dconnexion driver, 3Dconnexion Home gives you access to various 3Dconnexion apps:



Trainer:

Learn how to quickly use the 3Dconnexion SpaceMouse.



Manual:

Here you can find the manuals for all 3Dconnexion products.



Settings:

Open the settings panel to customize your 3Dconnexion devices.



Viewer:

Use the 3Dconnexion Viewer to review 3D models.

Supported formats (.stp, .step, .igs, .iges, .obj, .stl, .ply, .jt, .glTF).



Collage:

3Dconnexion Collage lets you create high resolution picture collages with your SpaceMouse.



Demo:

Test and practice your skills by assembling the landing gear of an aircraft.



Registration:

[Register](#) your product after the installation to benefit from 3Dconnexion services.



Videos:

Find instructive [videos](#) for your 3Dconnexion devices.



Feedback:

Provide [feedback](#) to the 3Dconnexion product team.

Technical Specifications

Dimensions & Weight

Length: 78 mm / 3.1"

Width: 78 mm / 3.1"

Height: 53 mm / 2.1"

Weight: 450 g / 0.99 lb / 15.87 oz

Battery - 3Dconnexion SpaceMouse Wireless

Rechargeable lithium polymer battery with a capacity of 1.100 mAh

Supported Operating Systems

Microsoft Windows, macOS

[More information](#)

Supported Software

[More information](#)

Package Contents

- 3Dconnexion SpaceMouse Wireless Bluetooth Edition
- Carry case
- 3Dconnexion Universal Receiver
- Cable USB-A / USB-C (1.5m)

Part Numbers

Packaging unit number (on packaging): 3DX-700115

Part number (on device): 3DX-600060

Safety, Compliance and Warranty Information

Manufacturer

3Dconnexion GmbH
Clarita-Bernhard-Straße 18
81249 Munich
Germany

Certifications and Registrations

CE, UKCA, EAC, FCC, IC, MIC, KC, RCM, BSMI, NCC, WEEE, RoHS-EU, RoHS-CN

[More information](#)

Warranty

3-years limited hardware warranty

Radio Frequency Information

Frequency band(s): 2404 - 2477 MHz

Maximum radio-frequency power: 0DBM

Battery Warning

[More information](#)

Support

3dconnexion.com/support