

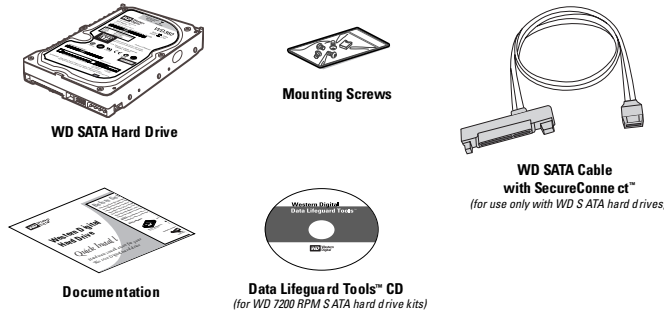
WD SATA Hard Drive

Quick Install Guide

Before Getting Started

This poster is designed to aid in the quick installation of your WD SATA hard drive. If you experience problems following these procedures or need further information regarding your drive, visit support.wdc.com to search our online knowledge base for frequently asked questions and other common troubleshooting tips and to download the full version WD SATA Hard Drive Installation Guide.

Kit Contents



Necessary materials and tools:

- Computer system manual
 - Operating system manual
 - Operating system installation CD
 - Phillips and flat-blade screwdrivers (if applicable)
1. Before performing any hardware installation, back up your existing data.
 2. Before handling the drive or system components, discharge static electricity by touching the metal chassis of your computer case or using an antistatic wrist strap.
 3. Locate the WD serial number, model number, and date code on the label on top of your drive, and record them below.
- | | |
|----------------|-------|
| Serial Number: | Date: |
| Model Number: | |
4. Power down the computer and unplug the power cord.
 5. Remove the system cover (refer to your system manual for instructions).

Unpacking and Handling Procedures

WD hard drives are precision instruments and must be handled with care during unpacking and installation. Hard drives can be damaged by rough handling, shock and vibration, or electrostatic discharge (ESD). Be aware of the following precautions:

- Do not unpack your hard drive until you are ready to install it. Your hard drive is packaged in an anti-static bag.
- Handle the hard drive only by the sides. Avoid touching circuit board components on the bottom of the drive.
- To avoid ESD problems, ground yourself by touching the metal chassis of the computer or by wearing a grounding strap before handling the hard drive. Articles of clothing generate static electricity. Do not allow clothing to come in direct contact with the hard drive or circuit board components.
- Do not stack hard drives or stand your WD drive on its edge.
- Do not drop, shake, or knock down the hard drive.
- Save the original packaging materials and antistatic bag in case you need to return your hard drive. Your warranty will be void if your returned drive is shipped in anything other than the original packaging or WD-approved materials.

Operating Systems

WARNING

Using an operating system not listed below may result in data loss.

The following operating systems are supported:

- Windows® XP
- Windows 2000

System Requirements

- SATA interface connector on motherboard, or SATA controller card (sold separately) installed in an available 32-bit PCI expansion slot (2.1- or 2.2-compliant).
- 3.5-inch internal drive bay

Online Product Registration

Take advantage of WD offerings by registering your drive at <https://www.westerndigital.com/en/products/registration>.

Technical Support

If you need additional information or help during installation or normal use of this product, visit our product support Web site at support.wdc.com and choose from these topics:

- **Warranty Services** — Obtain warranty information, warranty status, extended warranty, product replacement, RMA status, and shipping and packaging information.
- **Downloads Library** — Download installation software and drivers.
- **Technical Information** — Access product specifications, technical tips, and the online forum.
- **Knowledge Base** — Explore our expert knowledge base and frequently asked questions (FAQs).
- **Service Partners** — Find available WD-approved service and support in your region.
- **Contact Support** — Contact a support representative by phone or e-mail.
- **Rebates** — Check the status of rebate submissions.
- **Localized Support** — Display service and support information in various languages.

1 Set the Jumpers

The default setting for WD SATA hard drives varies depending on the model. To determine the default setting for your drive, look at the drive label on the top of the drive.

DO NOT change the default setting if you intend to use the drive in a desktop computer.

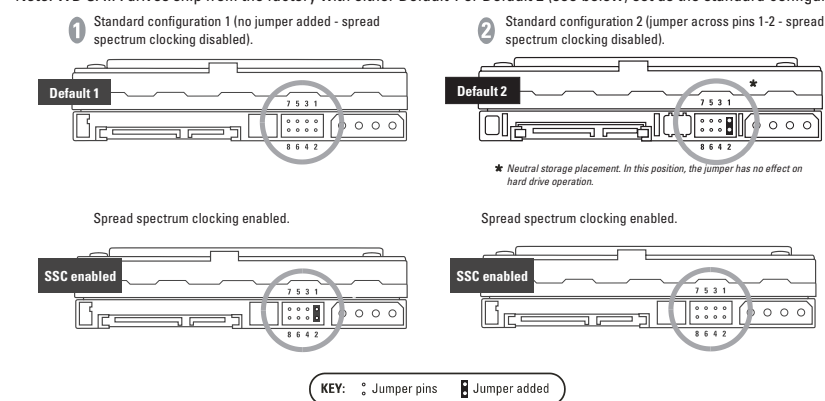
Change the jumper settings ONLY if you intend to use the drive in an enterprise storage environment. For more information on these advanced settings, obtain the full version WD SATA Installation Guide at support.wdc.com.

SSC_DIS Mode (Default) — Enable or disable the spread spectrum clocking feature. Default setting is disabled.

OPT1 — Only for factory use.

OPT2 — Only for factory use.

Note: WD SATA drives ship from the factory with either Default 1 or Default 2 (see below) set as the standard configuration.



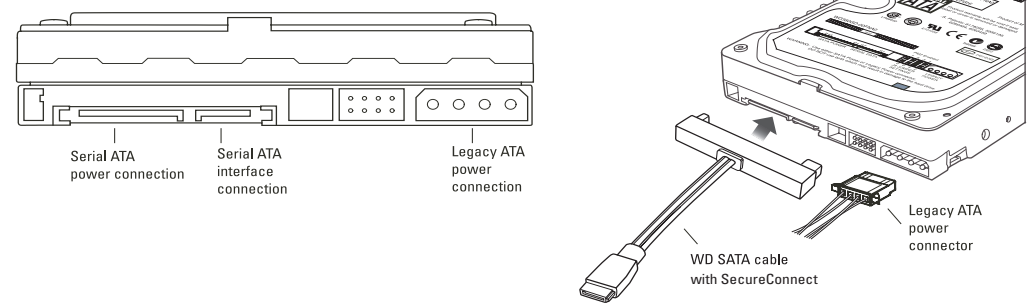
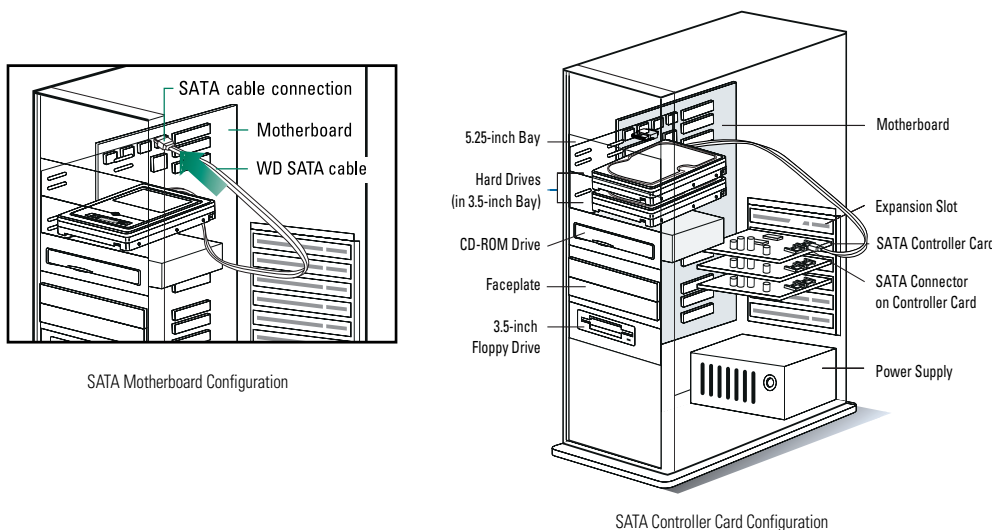
2 Install the SATA Hard Drive

IMPORTANT: Only for WD 7200 RPM SATA hard drive kits; all other WD SATA hard drive kits, skip to step 1 below.

If installing your new WD drive as an upgrade from a previously installed hard drive: To ensure the optimal settings for your drive configuration, WD recommends running the Installation Tutorial in the Windows version of Data Lifeguard Tools before hardware installation to generate your custom installation instructions. See "Data Lifeguard Tools" on the reverse side of this poster.

1. Connect the smaller connector on the WD SATA cable to the SATA connector on the motherboard or SATA controller card.

NOTE: If using a SATA controller card, be sure to follow the instructions that came with the card to install SATA host drivers.

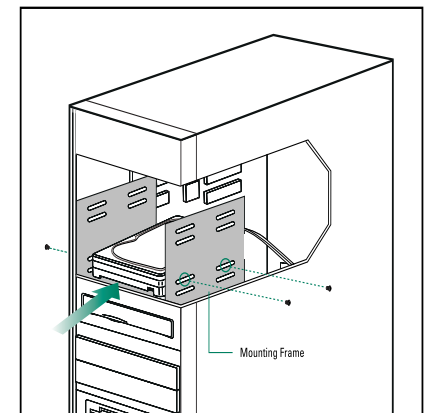


2. Attach the larger end of the WD SATA cable directly to the SATA interface on the back of the WD drive as shown above. SATA connectors are keyed to ensure proper insertion. Also attach the legacy 4-pin power connector.

CAUTION

The WD SATA cable with SecureConnect™ does not supply power to the drive. When using the WD SATA cable, you must also attach the legacy ATA 4-pin power connector to the SATA drive. When using a standard SATA interface cable (not included) instead, DO NOT connect both the standard SATA cable (not included) and legacy ATA 4-pin power cable at the same time or the drive may malfunction.

3. Slide the hard drive into an available 3.5-inch drive bay and secure the drive with the four mounting screws (two on each side). For proper grounding, install the screws in the hole positions as shown.
4. Verify all cable connections. Replace and secure the system cover. Reconnect the power cord and power up the computer.
5. If your WD SATA drive came with a Data Lifeguard Tools™ CD, see "Set Up Your Hard Drive" on the reverse side of this poster. If your hard drive kit did not include a Data Lifeguard Tools CD, see "Alternate Instructions for Installing a Drive" on the reverse side of this poster.



3 Using Data Lifeguard Tools

IMPORTANT: If your hard drive kit does not include a Data Lifeguard Tools CD, skip to “Alternate Instructions for Installing a Drive (Windows XP/2000).” You can also obtain the latest version of Data Lifeguard Tools from our Web site at support.wdc.com.

WD's Data Lifeguard Tools assists with hard drive installation, management, and diagnostics. Depending on your setup and configuration, you can use either the Windows or DOS version of Data Lifeguard Tools.

NOTE: Windows and DOS versions of Data Lifeguard Tools may vary slightly from one another in text, graphic placement, or color.

Data Lifeguard Tools contents:

- **Create a Bootable Diskette** — Create a bootable diskette in seconds.
- **View Installation Tutorial** — Create, view, and print a customized installation manual.
- **Set Up Your Hard Drive** — Partition and format an installed hard drive.
- **Drive-to-Drive Copy** — Copy all the files or a specific folder from one hard drive to another; set a specific hard drive size.
- **Hard Drive Information** — Configure jumper settings and other technical information regarding your hard drive.
- **Register Your Hard Drive** — Register your hard drive online (Internet connection required).

Create a Bootable Diskette

Follow these steps to create a bootable diskette using Data Lifeguard Tools:

1. Insert the Data Lifeguard Tools CD into your CD-ROM drive.
 - a. If using the Windows version, the CD autoruns on your desktop.
 - b. If using the DOS version, restart the computer and boot from the CD.
2. When the autorun menu appears, select **Create a Data Lifeguard Bootable Installation Diskette**. Follow the directions as prompted.

View Installation Tutorial

Follow these steps to create and print custom hardware installation instructions:

NOTE: The model number of your hard drive is printed on the label on top of the drive.

1. Insert the Data Lifeguard Tools CD into your CD-ROM drive.
 - a. If using the Windows version, the CD autoruns on your desktop.
 - b. If using the DOS version, restart the computer and boot from the CD.
2. Select **View Installation Tutorial** from the setup menu.
3. Depending on whether you run the Windows or DOS version, Data Lifeguard Tools may prompt you to select your model number or a hard drive configuration. If your hard drive is not listed, you can manually type in the model number. Follow the instructions as prompted to create your custom instructions.
4. If using the Windows version, your default Web browser opens automatically and displays your custom instructions. If using the DOS version, your instructions are displayed in the window. Click **Next** to print the instructions.

Set Up Your Hard Drive

This section contains instructions for installing your new WD hard drive either as a new boot drive or as an additional storage drive.

Install a New Boot Drive

1. Insert the Data Lifeguard Tools CD into your CD-ROM drive.
 - a. If using the Windows version, the CD autoruns on your desktop.
 - b. If using the DOS version, restart the computer and boot from the CD.
2. Select **Run Data Lifeguard Installation Software** from the autorun setup menu.
3. The main menu (shown below) appears after Data Lifeguard Tools is loaded. Click **Set Up Your Hard Drive** from the list of options. Data Lifeguard™ may take several moments to scan for system devices.



4. After Data Lifeguard Tools detects your installed hard drive(s), select the new drive to be formatted or partitioned as the new boot drive and click **Next**. If you are using a SATA controller card, click the **Additional Controllers** tab to select your new drive.

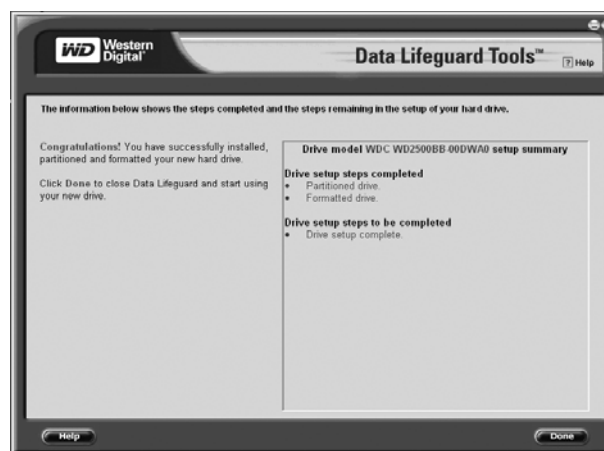
NOTE: Data Lifeguard Tools does not format or partition a currently installed boot drive (the drive icon is disabled).

5. For **Installation Type**, select **Add the drive as a boot device**. To create customized partitions, select the box to change advanced options and check **Custom Partition**.
6. The Custom Partition Setup screen appears. Your hard drive is automatically partitioned to the largest capacity based on your operating system limitations. If the drive contains existing partitions and you want to create or add partitions, you must first click **Delete** to remove existing partitions. To add partitions, use the slider bar to size the partition, then click **Add Partition**. After setting the partitions, click **Next**.

7. The next screen outlines your setup options, number of partitions, file format, and the size of each partition. Data Lifeguard Tools is now ready to set up your new hard drive. Click **Erase** then **Next** to continue.

CAUTION: All existing data on the hard drive will be erased. If you are prompted to continue, click **Yes** to proceed.

8. After Data Lifeguard Tools completes formatting and partitioning the drive, the setup summary screen below outlines all steps completed. Click **Done** to exit.



9. Remove the Data Lifeguard Tools CD from the CD-ROM drive and choose from the following options:

- a. If installing Windows, insert the Windows installation CD in the CD-ROM drive and restart the system. Follow the on-screen instructions to install the operating system.
- b. If an operating system is already been installed, restart the system.

This concludes the hard drive setup process. Your WD SATA hard drive is now ready to use.

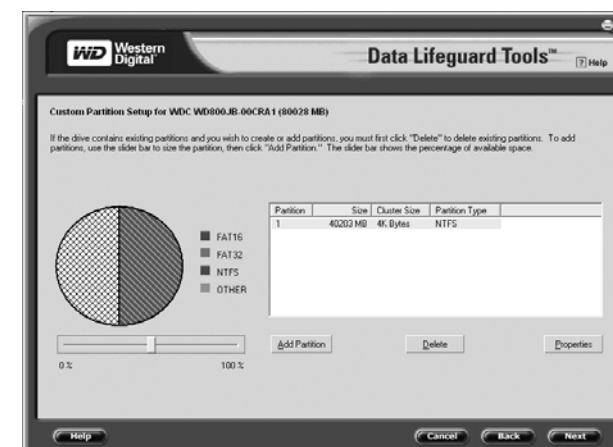
Install an Additional Storage Drive

1. Insert the Data Lifeguard Tools CD into your CD-ROM drive.
 - a. If using the Windows version, the CD autoruns on your desktop.
 - b. If using the DOS version, restart the computer and boot from the CD.
2. Select **Run Data Lifeguard Installation Software** from the setup menu.
3. The main menu appears after Data Lifeguard Tools is loaded. Click **Set Up Your Hard Drive** from the list of options. Data Lifeguard Tools may take several moments to scan for system devices.

4. After detecting your installed hard drives, select the drive to be formatted or partitioned as additional storage and click **Next**. If you are using a SATA controller card, click the **Additional Controllers** tab to select your new drive.

5. For **Installation Type**, select **Add the drive as an additional device**. To create customized partitions, select the box to change advanced options and check **Custom Partition**.

6. The Custom Partition Setup screen (shown below) appears. Your hard drive is automatically partitioned to the largest capacity up to 137 GB based on your operating system limitations. If the drive contains existing partitions and you want to create or add partitions, you must first click **Delete** to remove existing partitions. To add partitions, use the slider bar to set the desired partition size, then click **Add Partition**. After configuring the partitions, click **Next**.



7. The next screen outlines your setup options, number of partitions, file format, and the size of each partition. Data Lifeguard Tools is now ready to set up your new hard drive. Click **Erase**, then **Next**.

CAUTION: Continuing will erase all existing data on the hard drive. If you are certain, click **Yes** to proceed with format and partition.

8. After Data Lifeguard Tools completes formatting and partitioning the drive, the setup summary screen outlines all steps completed. Click **Done** to exit.
9. Remove the CD from the CD-ROM drive to begin using your new WD hard drive as additional storage. A new drive letter and icon appear under **My Computer**.

This concludes the hard drive setup process. Your WD SATA hard drive is now ready to use.

Drive-to-Drive Copy

CAUTION

Both source and destination hard drives must be formatted and partitioned before using this utility. Follow the instructions above to set up your drive.

The Drive-to-Drive Copy utility copies files from one drive to another. Use this feature when replacing an existing boot hard drive with a newer, faster hard drive.

1. Insert the Data Lifeguard Tools CD into your CD-ROM drive. Select **Drive-to-Drive Copy** from the main menu.
2. Select the **Source** and **Destination** paths with the selected folders. You can click **Browse** to easily access folders or files on both hard drives.

NOTE: Existing files on the destination drive are overwritten if there are files on the source drive with the same name.
3. After selecting the folder for each path, click **Start** to begin copying. The progress bar for the current file being copied and overall progress is displayed.
4. When copying is completed, click **OK** to display the results summary. Click **Done** to exit Data Lifeguard Tools.
5. Remove the CD and restart the computer to use your new WD hard drive.

Hard Drive Information

This feature allows you to view the drive model number, serial number, capacity, UDMA mode, and other details about your WD SATA hard drive.

1. Insert the Data Lifeguard Tools CD into your CD-ROM drive. Select **Hard Drive Information** from the main menu.
2. In the next window, you are given options to select either **View Hard Drive Information** or **View Jumper Settings**.
 - a. **View Hard Drive Information** — Once your drive is detected, click the tab for either **Partition Table** or **SATA Information** to display information about the drive format, LBA support, DMA support, firmware revision, etc.
 - b. **View Jumper Settings** — Select the drive model number and configuration, then click **View Jumper Settings** to display the selected jumper setting diagram in your default Web browser.

Alternate Instructions for Installing a Drive (Windows XP/2000)

If your hard drive kit does not include a Data Lifeguard Tools CD, you can use Windows built-in Disk Management utility to format and partition your drive. If necessary, refer to your operating system manual for detailed instructions.

Install a Single Hard Drive

1. Boot from the Windows XP or Windows 2000 Installation CD.
2. Follow the directions as prompted.

Install an Additional Hard Drive

Windows XP

1. Click the **Start** button and point to **Control Panel > Performance and Maintenance > Administrative Tools**.
2. Double-click the **Computer Management** icon and select **Disk Management** on the left side.
3. Right-click your new hard drive to proceed with partitioning and formatting.

Windows 2000

1. Click the Start button and point to **Settings > Control Panel > Administrative Tools**.
2. Double-click the **Computer Management** icon and select **Disk Management** on the left side.
3. Right-click your new hard drive to proceed with partitioning and formatting.