

Quick Start Guide

The DXG card incorporates an MXM GPU for GPU enabled Virtual Desktop Infrastructure and compute solutions. The DXG card has a **dual-slot** form-factor.

This guide tells you how to install and configure a DXG card on a Dell PowerEdge M640 blade server. An M640 blade can support **one** of this type of DXG card.

See *KBA 140 - Install a DXG-P6 in a M640 blade* for full details.

DXG kits

Each kit includes:

- DXG Graphics Virtualization Card, with Nvidia or AMD MXM GPU;
- 14G Mezzanine kit for the DXG card (includes mezzanine support bracket parts A and B, power cables for mezz slot B or C and support clip).

Prepare the blade

Important! Always use anti-static handling procedures to handle a DXG card or to work on the inside of a blade. Keep liquids away from the area.

1. Stop all VM activity on the blade. Shut down or migrate all virtual machines hosted by the blade.
2. In the VMware vSphere client, locate the ESXi server in the **Inventory** and put it in to **Maintenance Mode**.
3. Shut down the host M640 blade and remove it from the chassis.
4. Open the blade and remove any installed mezzanine cards.

Remove the Dell mounting bracket

1. Remove the screw on the Dell mezzanine card mounting bracket and retain.
2. Remove the two screws from the Network Daughter Card (NDC) and retain.
3. Remove together the mounting bracket and NDC from the enclosure.
4. Discard this mounting bracket and install again the NDC with the two screws.

Install the mezzanine support bracket (part A)

Important! The bracket only fits one way in the blade.

1. Move the support bracket (part A) into the blade so that the locating pins on the bracket align with the two blade pin recesses. See [Figure 1](#).

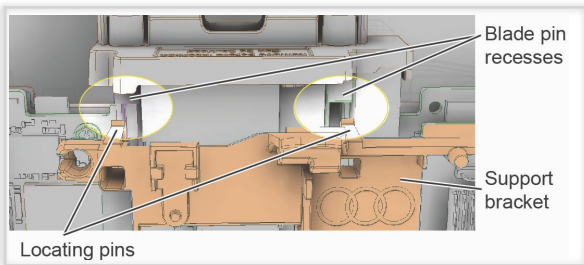


Figure 1: Align pins with the Airmax recesses

2. Move the bracket (part A) downwards. As the pins engage with the recesses, make sure that the sprung leg engages under the NDC. See [Figure 2](#).

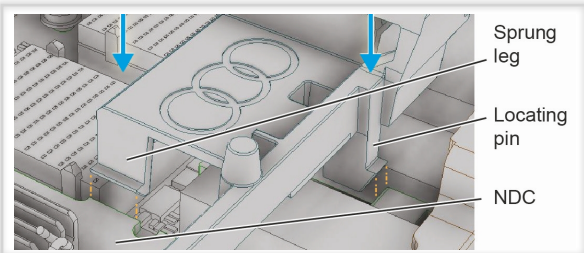
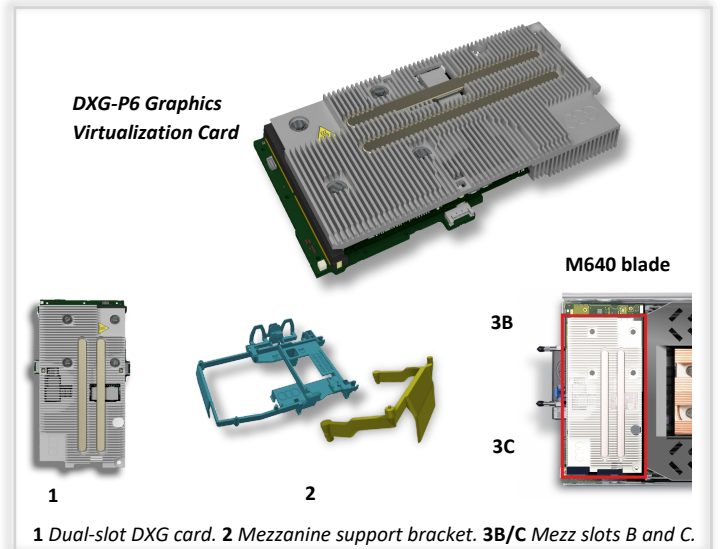


Figure 2: Move the support bracket (part A) into position

3. Install the retaining screw into the bracket.



Install the mezzanine support bracket extension (part B)

1. Push the ends of the two arms of the mezzanine support bracket extension (part B) into the holes in part A so that it clicks into place. See [Figure 3](#).

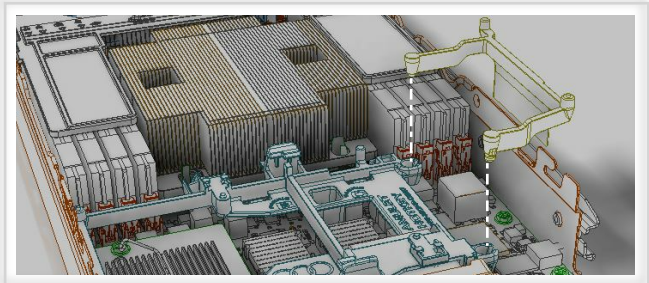


Figure 3: Install the mezzanine support bracket extension (part B)

Install any compatible Network Interface Card (optional)

Important! Only an additional, compatible network card (NIC) can fit in the other mezzanine ('mezz') slot. Contact Technical Support for details.

1. If a NIC card is required, install a compatible NIC card in mezz slot A or B.

Connect the power cable

Important! The DXG card can install in one of two positions and requires either a short power cable for mezzanine slot A, or long for mezzanine slot B.

1. Select the correct power cable, long for mezz slot B, short for mezz slot C.
2. Push the connector on the power cable through the square hole in the bracket (part A) and into the socket on the motherboard. See [Figure 4](#).

Important! Make sure the alignment feature aligns with the socket.

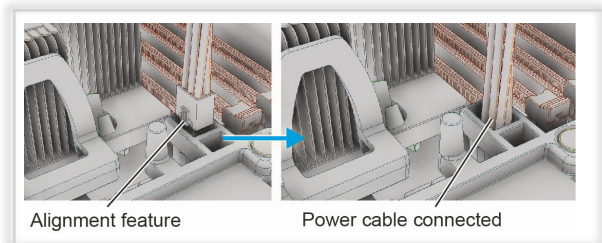


Figure 4: Connect the correct cable the motherboard

3. Hold the DXG by the PCB or connector and push the free flat connector of the power cable into the socket on the DXG.

Quick Start Guide

Install the DXG into the mezzanine support bracket

1. Align the DXG for mezz slot B or C on the mezzanine support bracket.
Note: The heatsink of the DXG covers both mezz connectors, and prevents the installation of another mezzanine card apart from a compatible NIC.
2. Turn the insertion tool so you can see the letters 'DXG' and locate the insertion tool on top of the hexagonal spacers on the DXG. See [Figure 5 \(A\)](#).
3. Push down on the DXG insertion tool with the heel of your hand to install the DXG. See [Figure 5 \(B\)](#).

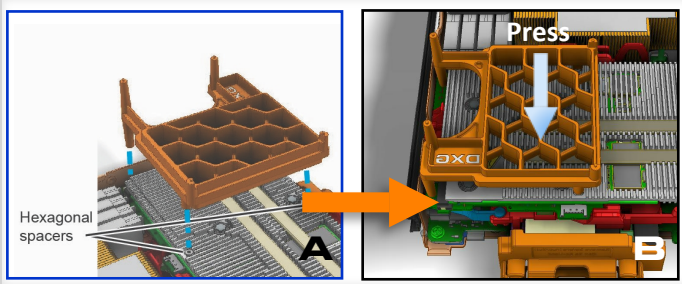


Figure 5: (A) Locate the insertion tool. (B) Push on the tool to install the DXG

4. Make sure the card sits level on the mezzanine support bracket.
5. Make sure the cable is routed through the cable management feature.

Install the mezzanine board support clip

1. Install the mezzanine board support clip on the edge of the blade chassis. See [Figure 5](#).
Note: Install the clip on the near side to the slot where the DXG is installed.

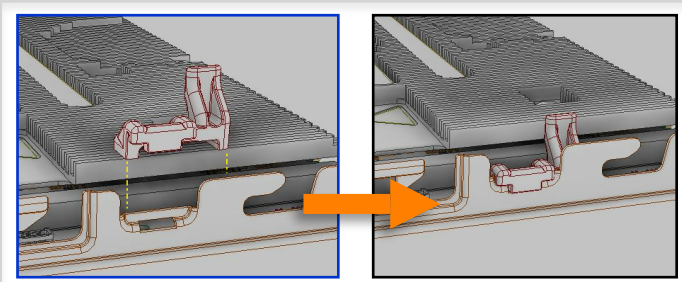


Figure 6: Install the mezzanine board support clip

Power up the blade

1. Close the blade.
2. Push the blade into the chassis and power up.

Set up the DXG card

1. See Knowledge Base Articles KBA 113 and KBA 114 for details on how to set up the DXG card after installation.
2. See our TechNote for details of the latest approved driver and software versions.

WARNING

To reduce the risk of fire or electric shock:

- do not disassemble the unit;
- make sure the unit is powered off before you remove or install components;
- do not expose this appliance to rain and moisture;
- do not expose the appliance to dripping or splashing;
- do not place objects filled with liquids on or near the appliance.



CAUTION

- Apart from those mentioned in this guide, there are no user serviceable parts inside.
- Install in accordance with these instructions.
- Do not install near significant sources of heat.
- Ensure the product is properly earthed.
- Only use attachments and accessories approved by Amulet Hotkey.
- Clean the product only with a dry cloth.



Technical Support

Europe: eurosupport@amulethotkey.com
N America: ussupport@amulethotkey.com
S America: latamsupport@amulethotkey.com
Asia Pacific: apsupport@amulethotkey.com

More DXG Product documentation and downloads available [here](#).

<https://resources.amulethotkey.com/resources>

You will need to download an electronic copy of this guide to make use of the hyperlinks below.

Check the vendor websites for [NVIDIA](#) and [AMD](#) guides. In addition, see [NVIDIA](#) and [AMD](#) sites for drivers.

Note: You must first purchase a GRID license to access the NVIDIA drivers.

Refer all servicing to qualified personnel.

For further information on this product, for other contact details, or for details of our other products, see our website www.amulethotkey.com.