



Jaco Utility Shelf, Post Mount

Part Number: 51-3608

Quote Description: SHELF, UTILITY, POST

Product Group: HC-Options - Holder and Shelf

Minimum Order Qty: 1

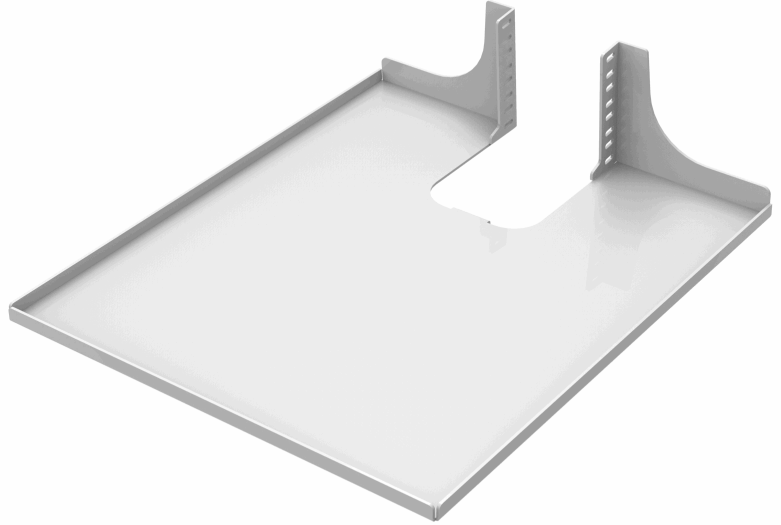
Weight: 7.00 LB

Length: 17.23"

Width: 14.40"

Height: 4.36"

Warranty: 7 Year Structural;



Product Description:

Add additional baskets, sanitary wipes holders, printer shelves, barcode scanners, pen cups, and more to your Jaco cart. Mounting locations are available in several places including the worksurface, post, and cart base. All Jaco shelves are made with durable, powder coated aluminum, and come in a variety of sizes and mounting locations. Shelves are designed to hold up to 15 lbs each.

Product Compatibility:

100: No	200: No	310: No	510: Yes	J1-10: No	WS-14: No
105: No	210: No	320: No	510-L250: Yes	J1-10-L250: No	WS-25: No
160: No	220: No		510-L500: Yes	J1-10-L500: No	
	225: No				
			520: Yes	J1-20: No	WA-40: No
			520-L250: Yes	J1-20-L250: No	WA-60: No
			520-L500: Yes	J1-20-L500: No	WA-80: No

Additional Compatibility Notes:

Not available if dual or triple drawer system is required

