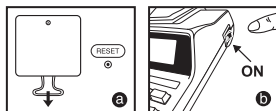


CONTENTS

BEFORE STARTING	P.1
HOW TO INSTALL THE INK CASSETTE (CJ-3A II)	P.1
INSTALLING PRINTING PAPER	P.3
PRINT / PRINT CHARACTER SIZE SELECTION SWITCH	P.3
DECIMAL POINT SELECTOR SWITCH	P.4
ROUNDING SWITCH	P.4
GRAND TOTAL SWITCH	P.4
ITEM COUNT SWITCH	P.5
KEY INDEX	P.5
IMPORTANT FUNCTIONS TO REMEMBER	P.6
CANCELLING THE ENTRIES	P.6
LANGUAGE CHANGE FUNCTION	P.6
CASH CHANGE FUNCTION	P.6
CLOCK & CALENDAR FUNCTION	P.6
BUSINESS SALES CALCULATION FUNCTION	P.7
CURRENCY CONVERSION FUNCTION	P.7
TAX FUNCTION	P.8
OVERFLOW FUNCTION	P.8
INK CASSETTE CARE	P.9
CAUTION	P.9
SPECIFICATIONS	P.10
BACKUP BATTERY	P.10
CALCULATION EXAMPLE	P.51-62

BEFORE STARTING

- 1) Remove the insulation tape at the back of calculator and press [RESET] key before use. (Figure a)
- 2) Turn power on. (Figure b)



HOW TO INSTALL THE INK CASSETTE (CJ-3A II)

Remove the ink cassette from the package.

- * **Tape removal:** Carefully peel back and remove the tape before installing the cassette. Tape can be discarded after removal (Figure 1).
- * Cassette is ready to use. Priming with a pin is not required.

How to replace the ink cassette

Note: Turn the power switch off.

1. Remove the printer cover.
 2. Pull the lever on the right-hand side of the printer carriage downward to remove the ink cassette.
 3. To install the new ink cassette, follow instructions detailed above.
 4. Push the lever on the right-hand side of the printer carriage upward to secure the ink cassette.
- ë Be sure to use the ink cassette before the expiry date as printed on the ink cassette package. The ink cassette should be used completely within **6 months** after removing it from the package.

What to do if your calculator does not print or if the characters are not clear. Occasionally, the characters on the printout may appear smudged or unclear or perhaps won't print at all. If this happens, press TEST KEY ABOUT 10 TIMES to try and restore normal printing. If print problems still occur, the cassette might be empty and please replace it.

1. If necessary, clean the ink head by GENTLY WIPING it with a lint-free cloth or tissue. (Figure ②)
 2. Remove the printer cover. (Figure ③)
 3. Hold the ridge along the top of the ink cassette and insert into the printer carriage as shown in Figure ④.
- ë Be sure not to move the printer carriage forcefully.
4. Push the lever on the right-hand side of the carriage upward to secure the Ink Cassette. (To remove the ink cassette, pull the lever downward.) (Figure ⑤)
 5. Replace the printer cover. (Figure ⑥)
- ë The ink cassette moves sideways during printing. Thus the position of the ink cassette may be different from the illustration.
- ë If the printer still does not work properly, take the calculator to a Canon authorized service station.
- ë The operating environment for your calculator is 10°C - 35°C with humidity 15% ~ 90%.



PRINT ON



: Entries and result will appear on the display and all the number are printed out in small size.

```
123,456,789,012.00 +
      12.00 +
123,456,789,012.00
.....
```



: Entries and result will appear on the display and all the numbers are printed out in large size.

```
123,456,789,012.00 +
      12.00 +
123,456,789,012.00
.....
```

DECIMAL POINT SELECTOR SWITCH



: Used for designating the decimal point position for calculated results.



+ (Add-Mode) : Addition and subtraction functions are performed with an automatic 2-digit decimal. It is convenient for currency calculations.



F (Floating Decimal Point) : All effective numbers up to 12 digits (BP1200-DTS) / 14 digits (BP1400-LTS) / 16 digits (BP1600-LTS) are printed or display.

ROUNDING SWITCH



: Used for round-up [\uparrow], round-off [5/4] or round-down [\downarrow] to the pre-selected decimal digits in the result.

GRAND TOTAL SWITCH



: When the calculations are performed with the GT switch set to "ON", the totals are accumulated in the grand total memory. Each time \boxtimes is pressed, the subtotal number is printed with the symbol G+. Press $\boxed{\text{GT}}$ key to obtain the grand total followed by the symbol GT. Press $\boxed{\text{GT}}$ successively to clear the grand total.

ITEM COUNT SWITCH



: At "n+" or "n+/-" position, the switch counts and prints the number of items up to 999.

<Item Count>

When the item count switch is set at "n+", the calculator counts the number of times the $\boxed{+}$ and $\boxed{-}$ keys are pressed. When the switch is set at "n+/-", the calculator counts the number of times the $\boxed{+}$ key is pressed and subtracts from the total number of times the $\boxed{-}$ key is pressed.

<Memory Item Count>

When the switch is set at "n+", the calculator counts the number of times the $\boxed{M+}$ and $\boxed{M-}$ keys are pressed. When the switch is set at "n+/-", the calculator counts the number of times the $\boxed{M+}$ key is pressed and subtracts from the total the number of times the $\boxed{M-}$ key is pressed.

<Printing of the Item Count>

When the PRINT switch is turned "ON" (S/L PRINT), and the "ITEM" count switch is in the "n+" or "n+/-" position, the number of items recorded by the counter can print up to three digits on the left-hand side of the paper by pressing either the $\boxed{\text{PRINT}}$ key or the $\boxed{\text{PRINT}}$ for item count and \boxed{S} key or \boxed{T} for memory item count.

KEY INDEX

PAPER FEED



Paper Feed Key: Used for advancing the paper.



Right Shift Key: Used for shifting and correcting an entered right number. A single press deletes the last digit on the right.



Memory Plus Equal Key: Used for obtaining a calculation result and adding the result automatically to the memory. This key is also used for adding a number to the memory.



Memory Minus Equal Key: Used for obtaining a calculation result and subtracting the result automatically from the memory. This key is also used for subtracting a number from the memory.



Memory Subtotal Key: Used for obtaining intermediate result of the memory calculation. This key will not clear memory contents.



Memory Total and Memory Clear Key: Used for obtaining total of memory contents. This key will clear memory contents at the same time.



Percent Plus-Minus Key: Used for performing percentage, add-on and discount calculations.

IMPORTANT FUNCTIONS TO REMEMBER

- C** **Clear Key:** Used for clearing all registered calculations except memory. It is also used for clearing the overflow error.
- CE** **Clear Enter Key:** Used for clearing last entered value.
- #** **Non-Add / Subtotal Key:** Used for printing out information which does not effect the calculation such as dates and serial numbers. Figure are printed on the left-hand side of the paper. It is also used for obtaining intermediate results.
- ⊗** **Total / Equal Key:** Used for obtaining addition, subtraction, multiplication and division results.

CANCELLING THE ENTRIES

Press **CE** to clear last entered value. Press **→** to delete the right most digit of a number. Press **C** to clear all entered values, except memory.

LANGUAGE CHANGE FUNCTION

5 European languages text and printout are available. (English, German, Spanish, French and Italian).

- RATE** **LANGUAGE** : Press **RATE** **LANGUAGE** to recall and display the multi-language. Then press **LANGUAGE** successively to select the language.
- SET** : Press **SET** to confirm the preferred language.

CASH CHANGE FUNCTION

- CHANGE** : Used for calculating the change amount, it performs accurate and fast change calculation.

CLOCK & CALENDAR FUNCTION

- 🕒** : Used to switch between calendar or clock mode.
- 12/24** : Used to switch between 12 or 24 hour at clock mode time setting.
- AM/PM** : Used to switch between AM or PM at clock mode time setting.
- SET** : Used to set the date and time in calendar & clock mode.
- FORMAT** : Used to select date format between "YYYY/MM/DD", "DD/MM/YYYY" or "MM/DD/YYYY" at calendar mode.

BUSINESS SALES CALCULATION FUNCTION

COST **SELL** **MARGIN** : Used for calculating the cost, selling price and profit margin.

Enter the value of any 2 items to obtain the balance value item. (e.g. enter the value of the cost and the selling price to obtain the profit margin %.)

CURRENCY CONVERSION FUNCTION

C **Set** **C1** **C2** or **C3** : Press **C** **Set** and hold for 1 second, then enter the currency conversion rate and press **C1**, **C2** or **C3** to store the rate.

C **C1** **C2** or **C3** : Press **C** **C1**, **C2** or **C3** to recall the stored currency conversion rate.

LOCAL : Press **LOCAL** to convert currency figure displayed from **C1**, **C2** or **C3** to the **LOCAL**.

C1 **C2** or **C3** : Press **C1**, **C2** or **C3** to convert displayed figure from **LOCAL** to **C1**, **C2** or **C3**.

*1 Specifying the Number of Decimal Places for Intermediate Local Currency Amounts.

When you convert from one national currency to another, the calculator internally converts the original currency to Local Currency. This conversion result is the "intermediate Local Currency amount". Next, the intermediate Local Currency amount is converted to the target currency. The flow of the steps of the conversions will be shown on the printout.

For such a calculation, you should use the following procedure to specify the number of decimal places for the intermediate Local Currency amount. You can specify from 0 (*2) to 9 decimal places, for a floating decimal point (F). The intermediate Local Currency amount is rounded off to the number of decimal places you specify.

*2 0 is displayed when F (floating point) is set for the number of decimal places. F is the initial default setting.

- For rates of 1 or greater, you can input up to six digits. For rates less than 1 you can input up to 8 digits, including 0 for the integer digit and leading zeros (though only six significant digits, counted from the left and starting with the first non-zero digit, can be specified).

TAX FUNCTION

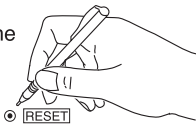
- [RATE] [TAX+]** **To Store The Tax Rate:** Enter the tax rate figure, then press **[RATE] [TAX+]** to store.
- [RATE] [TAX-]** **To Recall The Tax Rate:** Press **[RATE] [TAX-]** to recall the current tax rate.
- [TAX+]** **Add Tax Key:** Used for adding the tax amount to the displayed figure.
- [TAX-]** **Deduct Tax Key:** Used for deducting the tax amount from the displayed figure.

- **Note:** The entered tax rate will be remain stored by the backup battery even when the calculator is turned off or the AC cord is disconnected.

OVERFLOW FUNCTION

In the following cases, when "E" is displayed, the keyboard is electronically locked, and further operation is impossible. Press **[C]** to clear the overflow. The overflow function occurs when:

1. The result or the memory content exceeds 12 digits (BP1200-DTS) / 14 digits (BP1400-LTS) / 16 digits (BP1600-LTS) to the left of the decimal point.
 2. Dividing by "0".
 3. The sequential operation speed is faster than the calculation processing speed. (Buffer Register Overflow)
- Electromagnetic interference or electrostatic discharge may cause the display to malfunction or the memory, tax rate, currency conversion rate, clock and calendar to be lost or altered. Should this occur, use the tip of a ball point pen (or similiar sharp object) to press the [RESET] button on the back of the calculator. After resetting, be sure to set the tax rate, currency conversion rate, clock and calendar again.



INK CASSETTE CARE

- Do not touch the surface of either the head or the circuit section.
- Do not allow the face of the head to come into prolonged contact with other materials as the ink may leak out of the Ink Cassette.
- Do not store or leave the calculator near a heat source or place where it will be exposed to direct sunlight.
- To maintain clear printing, change the Ink Cassette after 10 rolls of printing paper have been used.
- Be sure not to move the carriage of the ink cassette forcefully.
- If the ink cassette is not used for a long time after being removed from its packaging, the ink may leak out of the cassette.
- If the printer is not used for a long time, be sure to remove the ink cassette from the printer unit, and store with the print head in an upright position.
- Be sure to press **C** key after replacing the ink cassette.
- Contents of cassette: Food Black 2 acid salt

Warning: The ink may cause sensitization by skin contact and irritating to respiratory system. Wash with water and soap. If irritation persists, consult a doctor promptly without delay. Keep the Ink Cassette out of reach of children and skin.

CAUTION

- Do not use or leave the calculator under direct sunlight. Areas subject to rapid temperature changes, high humidity, dust and dirt should also be avoided.
- Use a dry cloth to clean the casing of the unit. Do not use water or detergents.
- Activate the printer only when the paper roll is loaded.
- Avoid using the calculator in places where there are iron filings, as this may affect the electrical circuits of the calculator.
- Do not place anything on top of the machine, particularly on top of the printer mechanism.
- Turn the calculator off before removing the plug from the electrical outlet.
- Not allow changing print mode during calculation to provide accurate printing contents.
- The AC outlet must be located near the equipment and easily accessible.
- Pull the main plug out of the wall socket if you want to switch off the main power or in case of electrical fault (i.e. smoke), disconnect the plug from the electrical socket outlet immediately.

SPECIFICATIONS

Power source: AC200-240V, 50/60Hz

Printing Speed: Max. 5.6 line/second (Approximate)

Input buffer register (up to 10 key entries), 2 key rollover function

Usable temperature: 5°C to 35°C (41°F to 95°F)

Dimensions: 219 (W) x 317 (L) x 79 (H) mm

8-5/8" (W) x 12-31/64" (L) x 3-7/64" (H)

Weight: 1.5 kg (3.31 lb)

(Subject to change without notice)

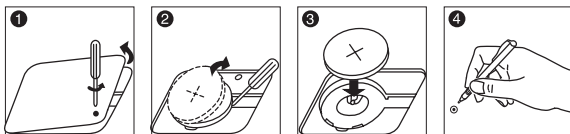
BACKUP BATTERY

Memory backup battery retains the tax rate, currency conversion rate, clock and calendar setting, even if the power is off or the AC cord is disconnected.

Battery: 1 Lithium battery (Type: CR2025)

Battery life: Back up time 7000 hours.

CAUTION: Risk of explosion if battery is replaced by an incorrect type.
Dispose of used batteries according to the instruction.



After replace the back-up battery, press the [RESET] button. After resetting be sure to set the tax rate, currency conversion rate, clock and calendar again.

European Union (and EEA) only.

These symbols indicate that this product is not to be disposed of with your household waste, according to the WEEE Directive (2002/96/EC), the Battery Directive (2006/66/EC) and/or your national laws implementing those Directives.

This product should be handed over to a designated collection point, e.g., on an authorized one-for-one basis when you buy a new similar product or to an authorized collection site for recycling waste electrical and electronic equipment (EEE) and batteries and accumulators. Improper handling of this type of waste could have a possible impact on the environment and human health due to potentially hazardous substances that are generally associated with EEE.

Your cooperation in the correct disposal of this product will contribute to the effective usage of natural resources.

For more information about the recycling of this product, please contact your local city office, waste authority, approved scheme or your household waste disposal service or visit www.canon-europe.com/environment.

(EEA: Norway, Iceland and Liechtenstein)

